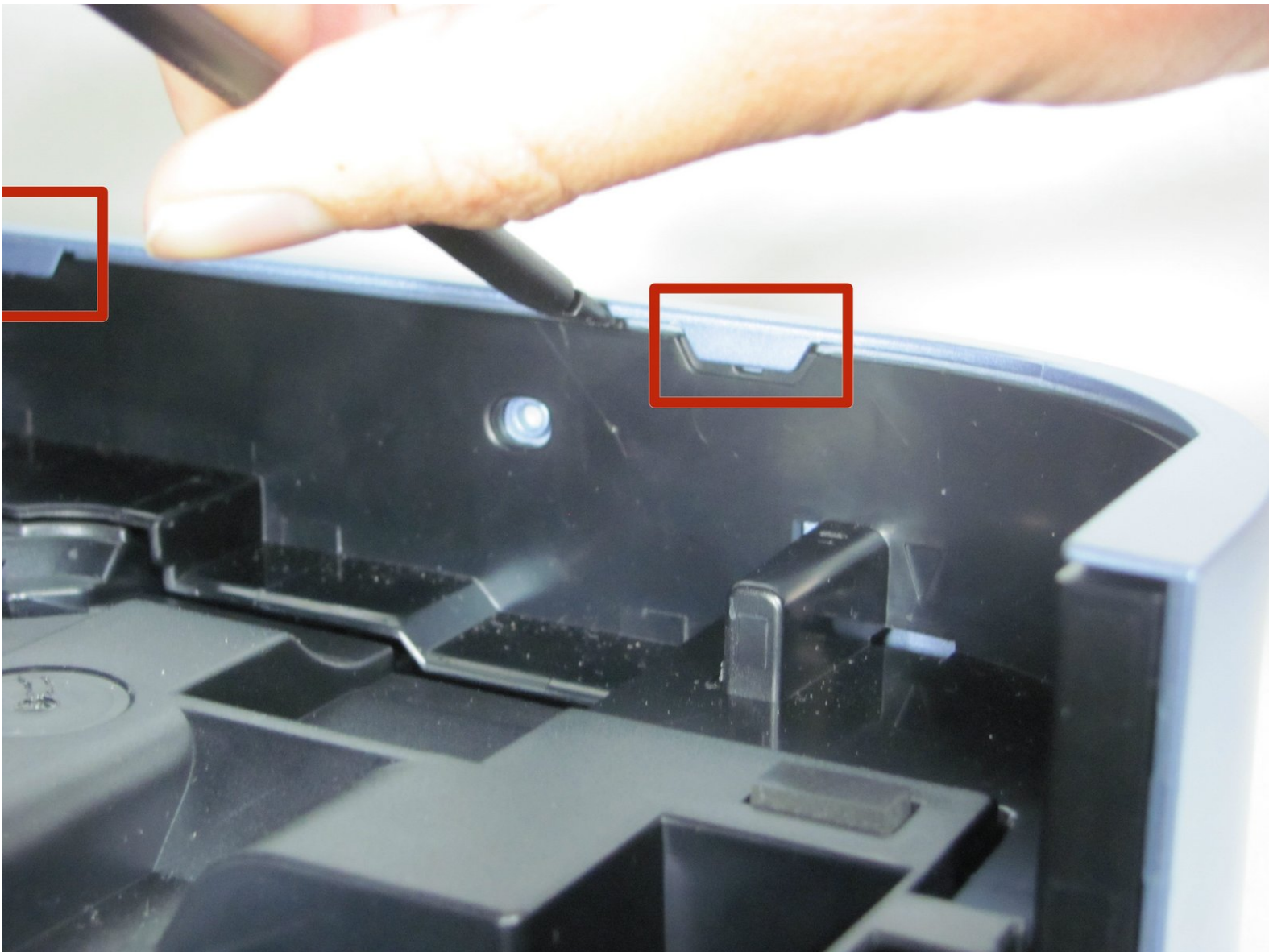




Canon PIXMA MP620B Ink Head Replacement

Replacing the Ink Head is necessary if your Ink Head is leaking or too badly clogged with Ink that it does not function properly.

Written By: Val Fedorikhin



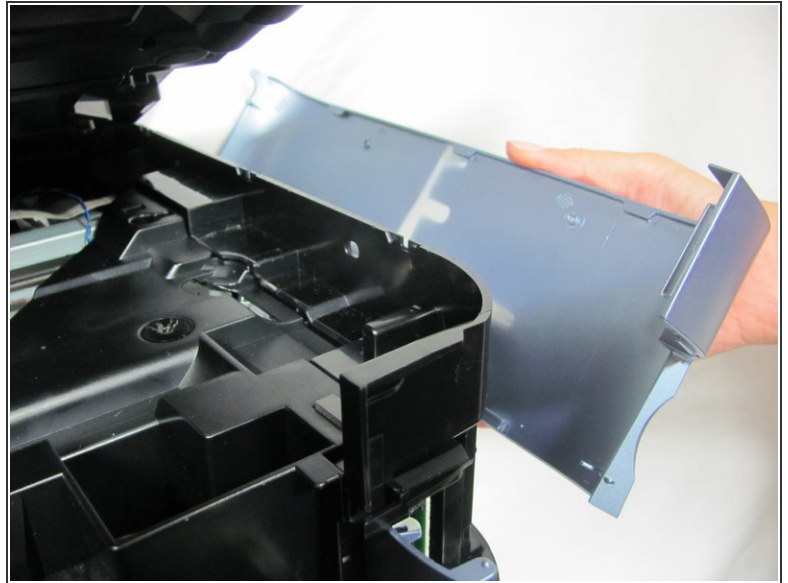
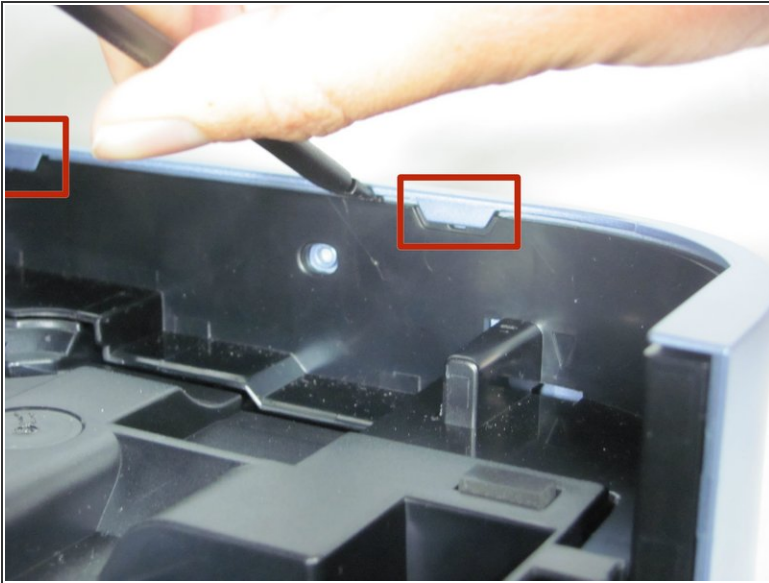
INTRODUCTION

This replacement is not easy and takes a considerable amount of time. This guide will show you how to safely remove the ink head from your printer.

TOOLS:

- [Spudger](#) (1)
 - [iFixit Opening Tools](#) (1)
 - [64 Bit Driver Kit](#) (1)
-

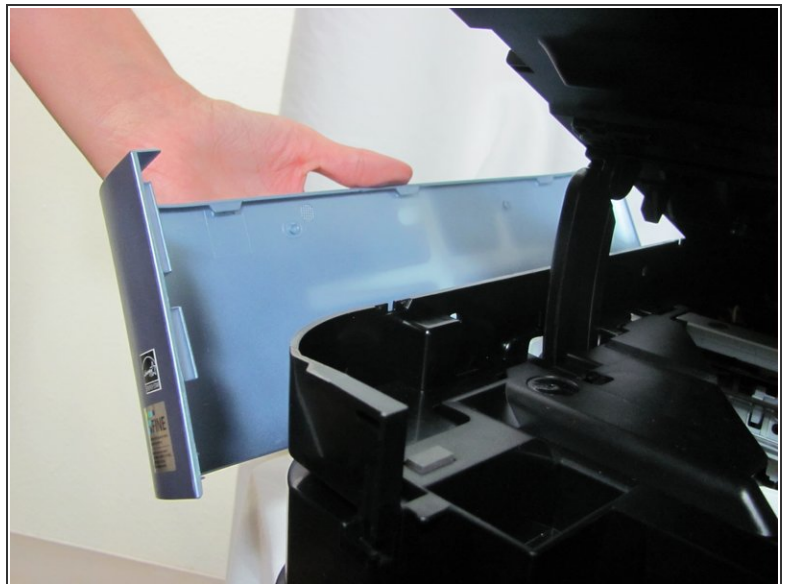
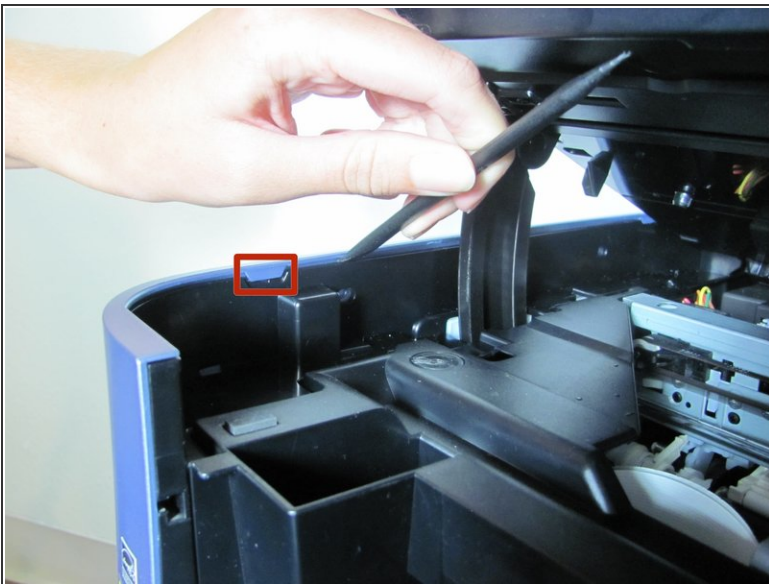
Step 1 — Remove right blue side panel



- There are a few tabs on the top of the panel that hook down and into the black side panel. Insert the tool in-between the black panel and the blue panel as shown and pull the two pieces apart.

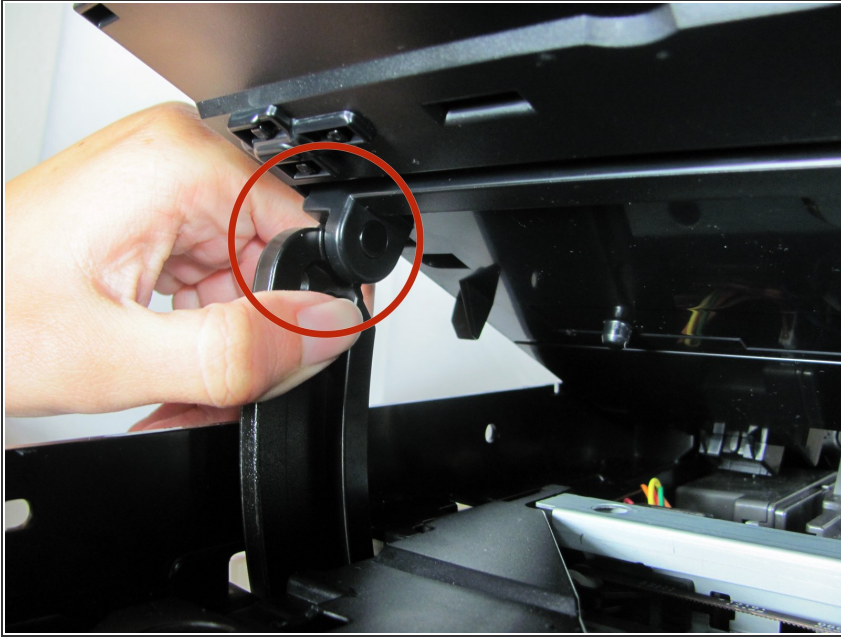
⚠ You will hear some snapping. Don't panic: this is just the hooks un-clipping.

Step 2 — Remove left blue side panel



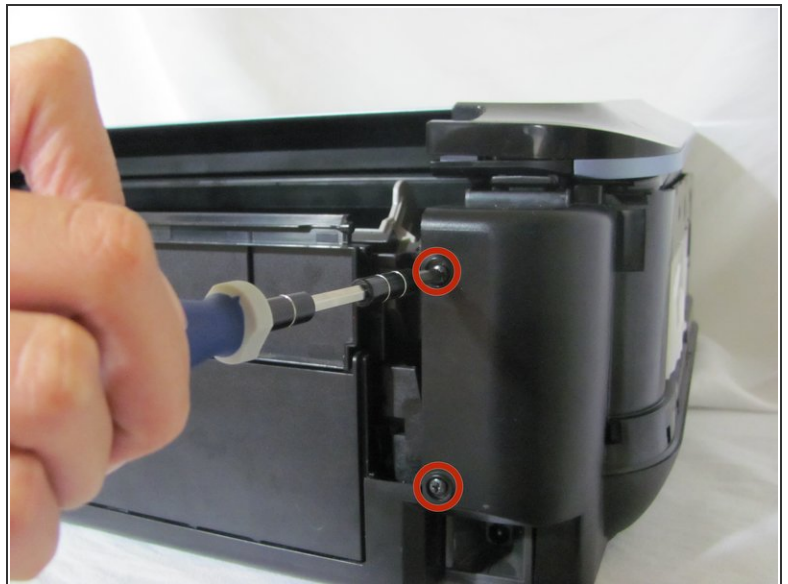
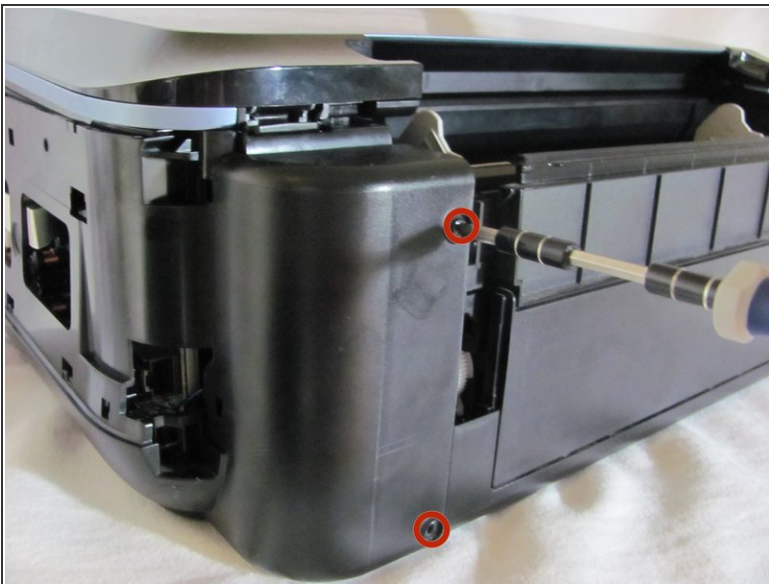
- Repeat the same process as the left side panel.

Step 3 — Lift scanner lid and unhook lid support



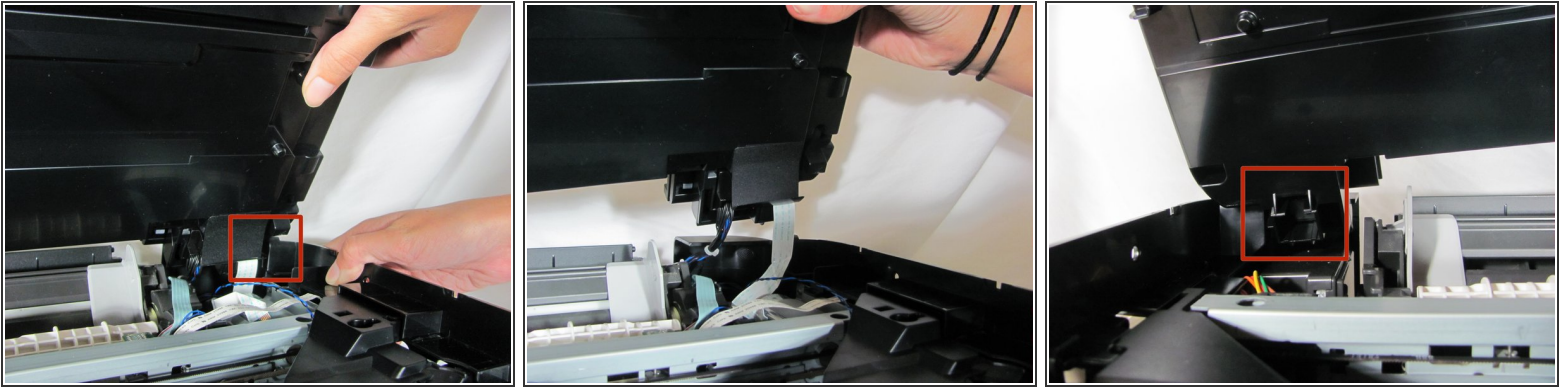
- Unhook the lid support by sliding the hook down and to the left. Make sure the support is fully disconnected before proceeding.

Step 4 — Remove back screws holding black side panels




- Remove the four black screws on the back panels from both the left and right side.

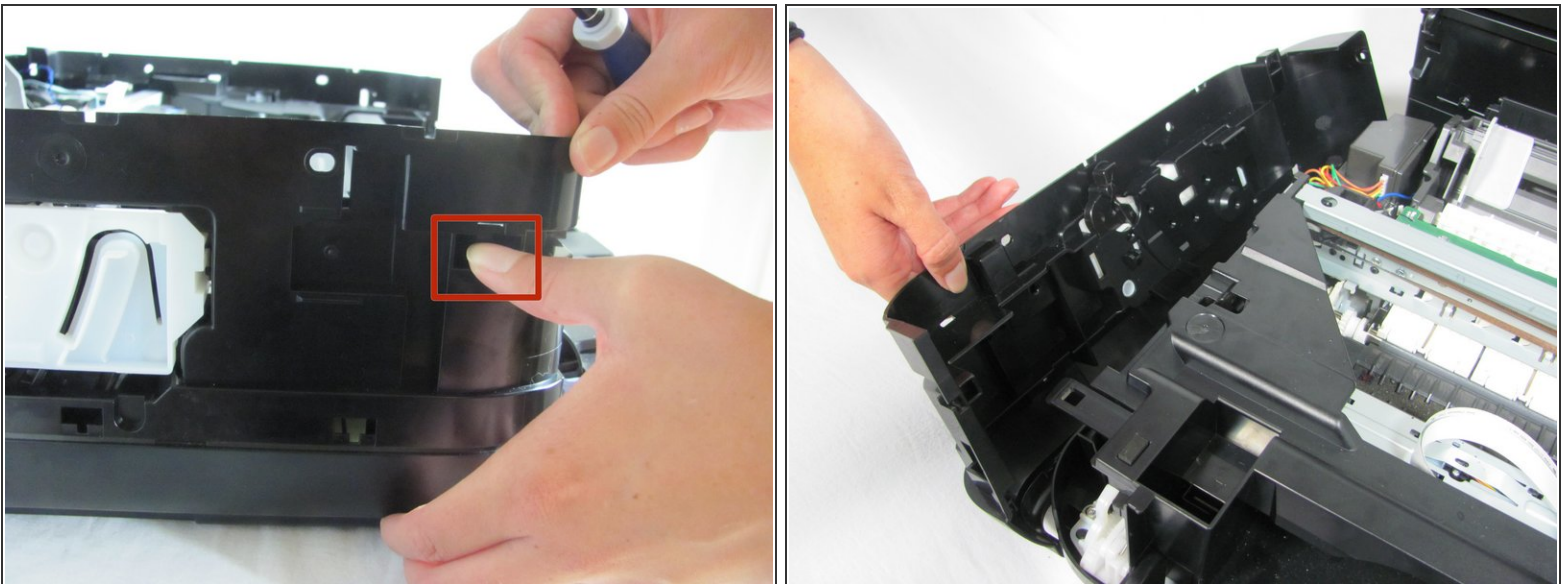
Step 5 — Take off entire lid assembly



- Remove the scanner by pulling the side panels out until the scanner pin is free. Set the scanner aside.

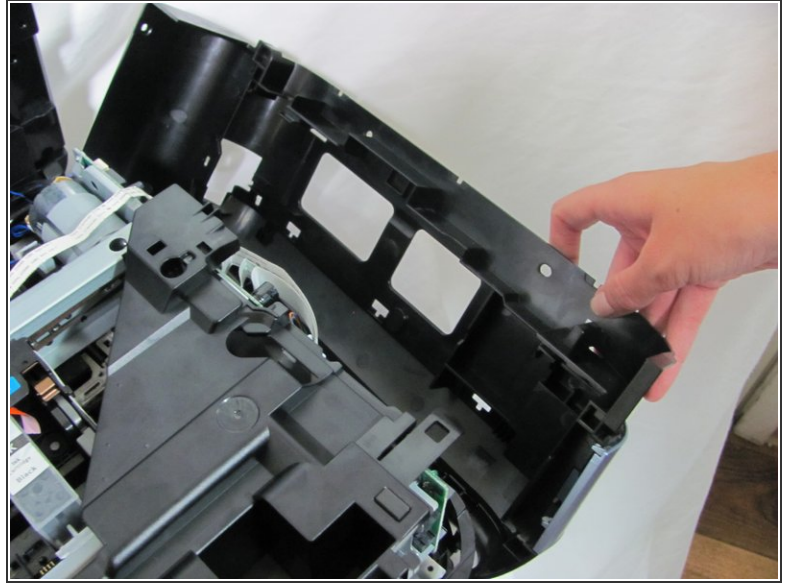
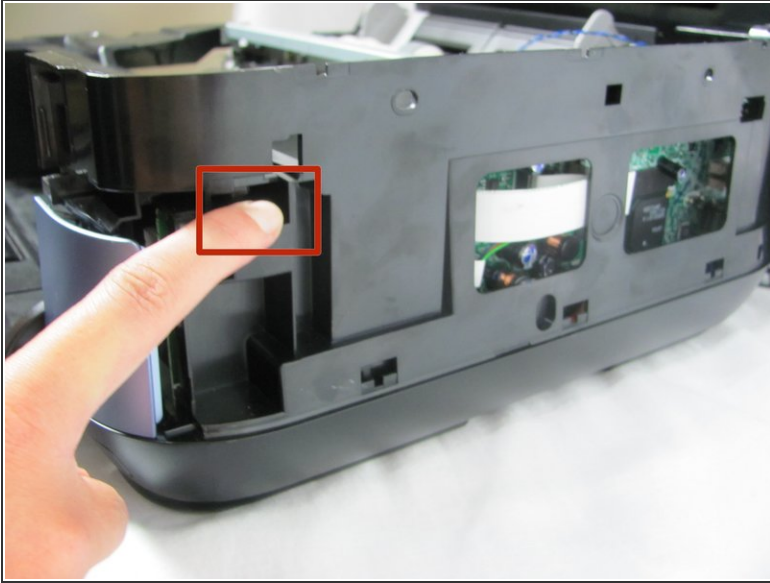
 The scanner will still be attached with wires on the right side. Be careful not to yank the part away from the main body of the printer

Step 6 — Remove the left black side panel



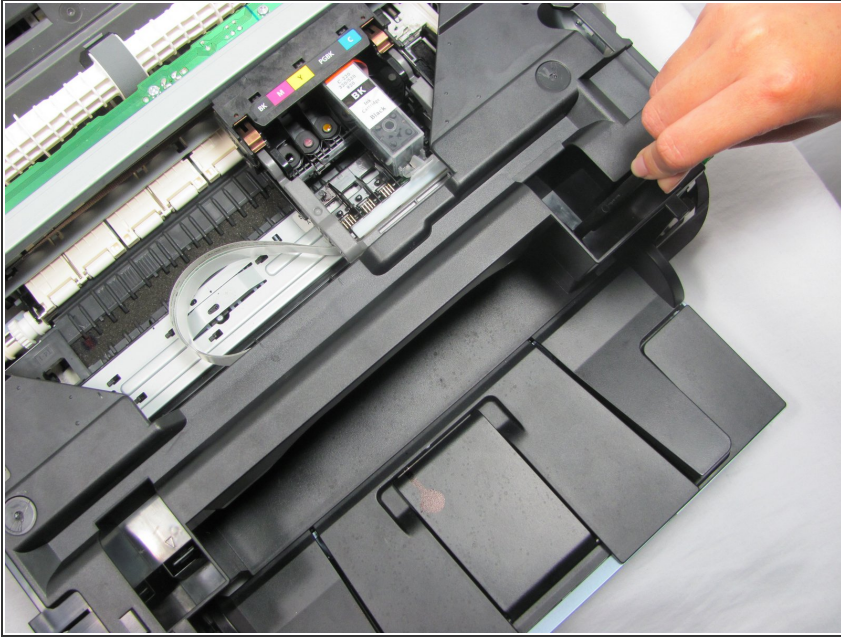
- Press down on the clip on the left side of the printer until it clicks, and pull the panel free.

Step 7 — Remove the right side panel



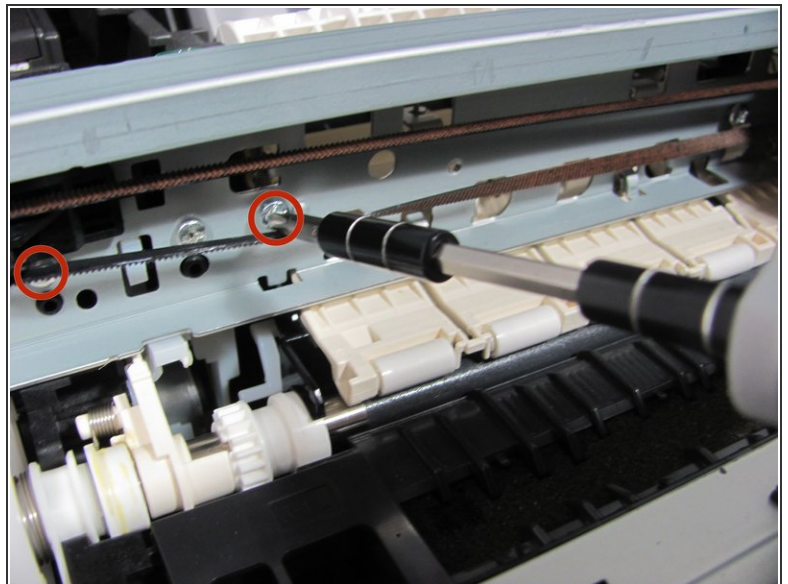
- Press down on the clip on the right side panel until it clicks, and then pull the panel free.

Step 8 — Remove the black plastic cover



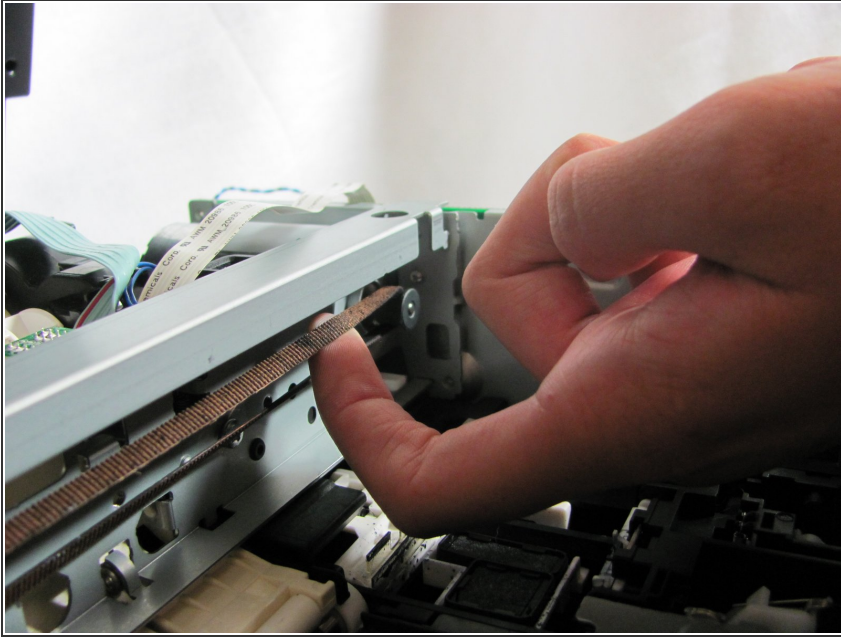
- Remove the plastic cover by depressing the clip located on the right side of the printer. Press the clip inwards until it clicks, and then lift the cover upwards and off the printer.

Step 9 — Remove the three screws holding the top rear slider rail



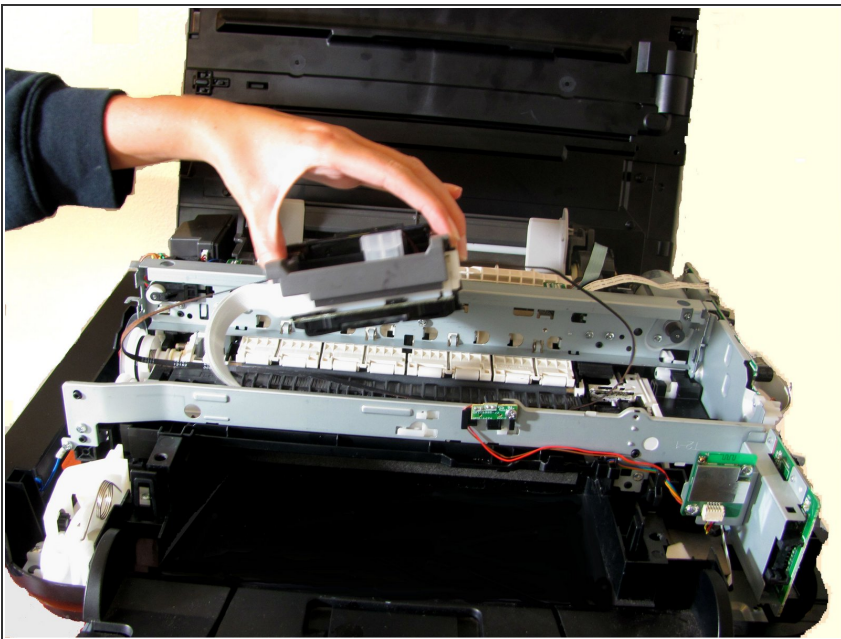
- Unscrew the three screws holding the rail.

Step 10 — Remove the guiding cord



- Remove the cord by pulling upwards on it and unhooking it from the pulleys on either end.

Step 11 — Remove the ink head



- Remove the ink head by pulling it away from the rail.

To reassemble your device, follow these instructions in reverse order.