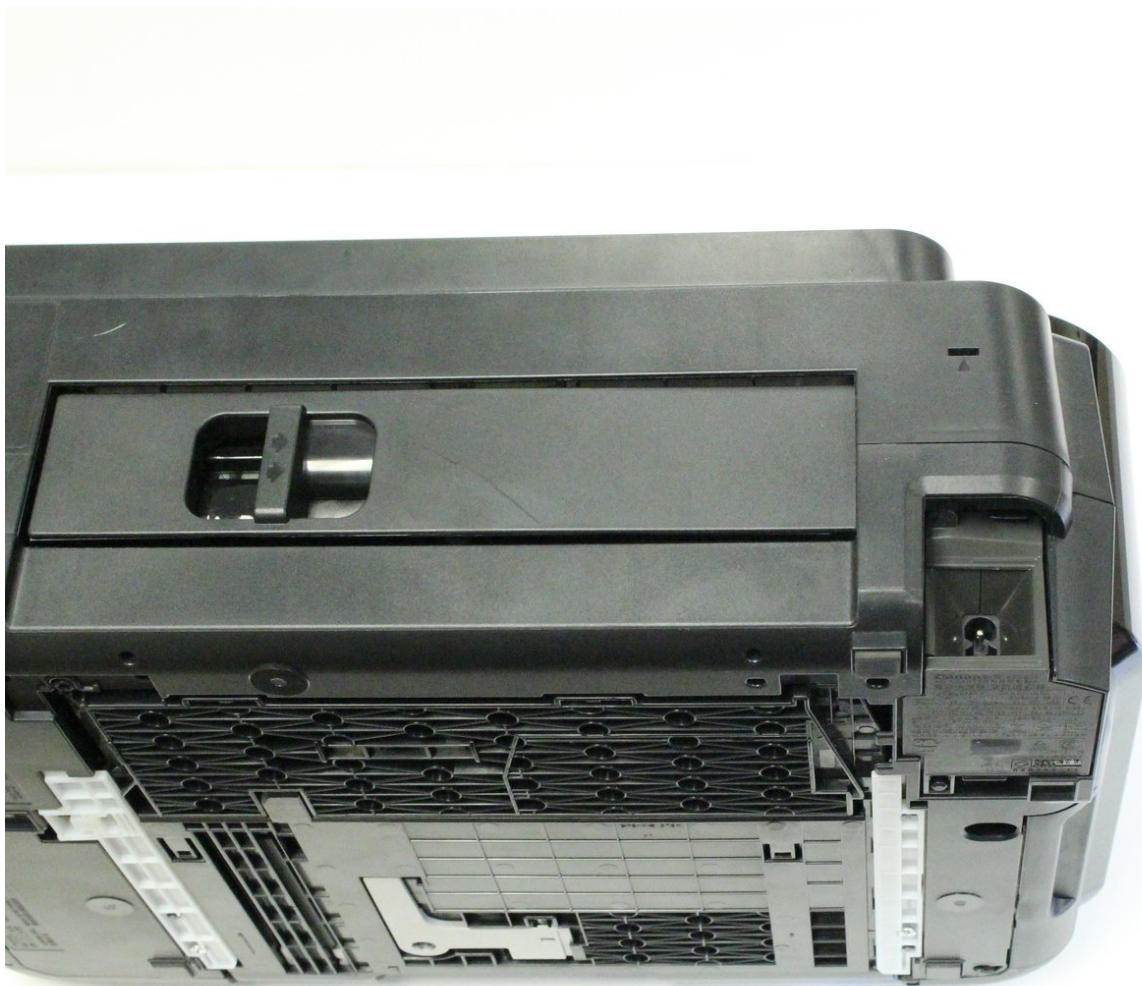




Canon PIXMA iP3600 AC Adapter Replacement

How to replace the AC adapter.

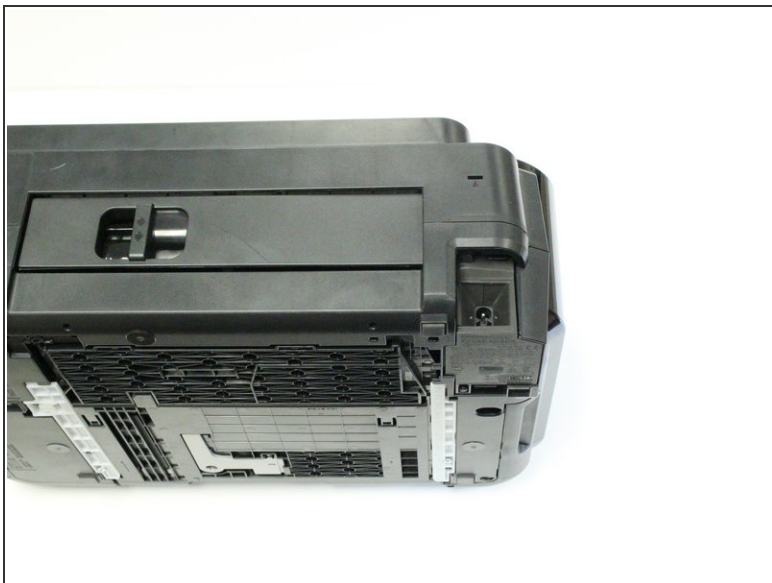
Written By: Caitlyn




INTRODUCTION

The AC adapter may need to be replaced if you are experiencing issues with the power connection to your printer. The removable power cord is plugged into the AC adapter.

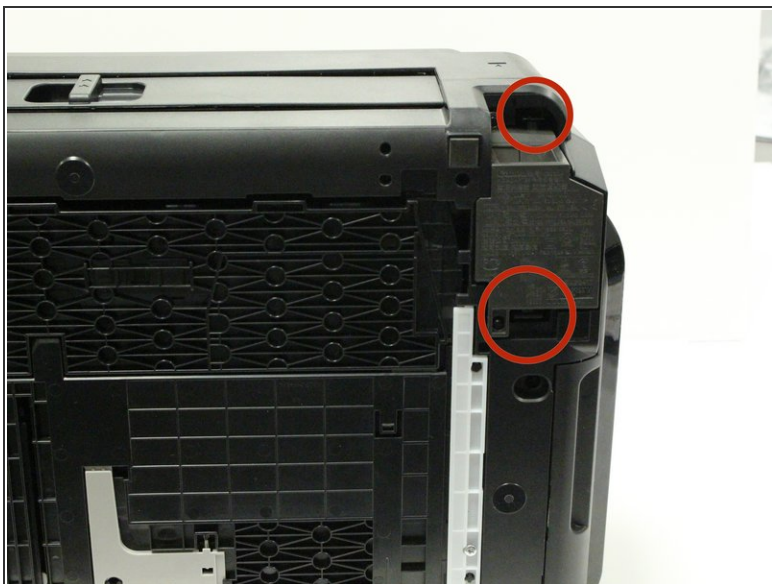
Step 1 — AC Adapter



 It is very important to disconnect your printer from the outlet before attempting replacement. This ensures that there is no power reaching the AC adapter.

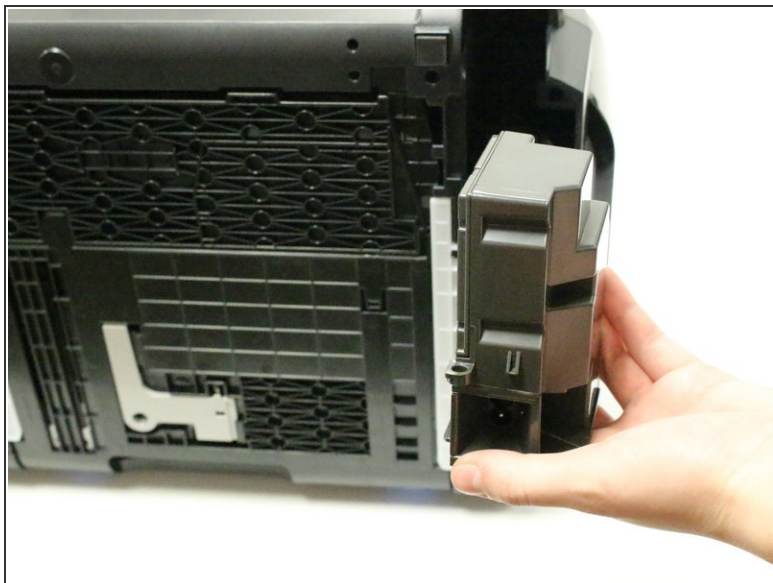
- Remove power cord by disconnecting it from the AC Adapter.

Step 2



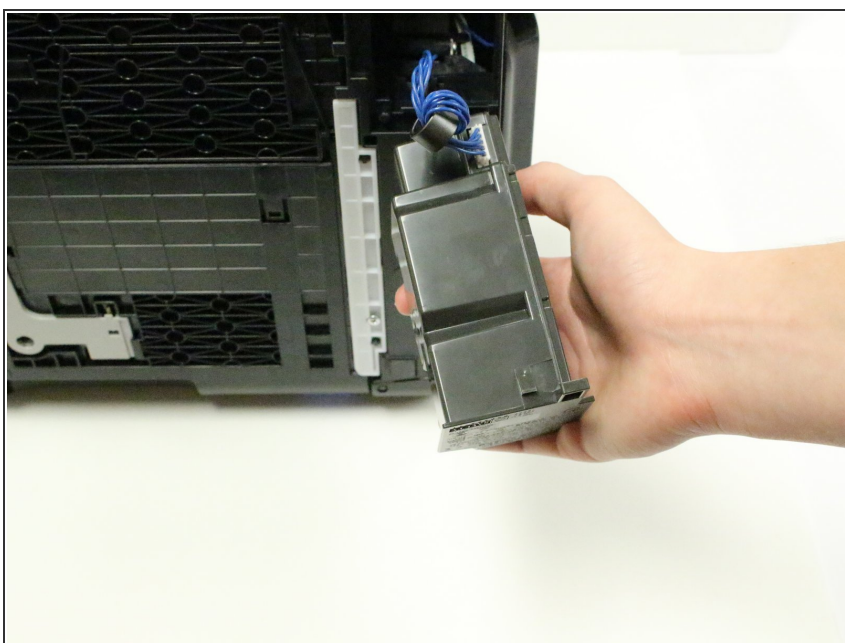
- Pinch upper and lower prongs, moving them away from the AC adapter.

Step 3



- The AC adapter will now be loose, and able to come away from the printer.
- Grasp the AC adapter and pull it toward you to remove it.

Step 4



- Rotate the AC adapter toward you so that the blue cord, with white connector head, is facing you.

Step 5



- Grasp the white connector head that is attached to the end of the blue cord.
- Disconnect the white connector head by gently pulling it away from the AC adapter.
- You have successfully removed the AC adapter.

To reassemble your device, follow these instructions in reverse order.