



# Canon Pixma MP480 Buttons Replacement

Replace the buttons in your Canon Pixma MP480.

Written By: Khutug Dorjsuren



# INTRODUCTION

Use this guide to replace the broken buttons to get back full functionality of your printer.



## TOOLS:

- [Phillips #1 Screwdriver](#) (1)
- [iFixit Opening Tools](#) (1)



## PARTS:

- [Canon Pixma MP480 Buttons](#) (1)

## Step 1 — Rear and Side Panel



- Remove the following two Phillips screws:
  - Two 7.85 mm Phillips #1 screws

## Step 2



- Pull the back cover off by lifting up on the cover.
- ⓘ You may need to pull firmly as it requires quite a bit of force.

### Step 3



- Open the front tray.

### Step 4



- Lift the scanner compartment.

## Step 5



- After opening up the scanner compartment, make sure the blue lever locks into place, keeping the compartment open.

## Step 6



- Push the blue lever back while twisting it clockwise in order to remove the lever from its slot.
- After removing the lever, close the scanner compartment and the scanner cover.



## Step 7



- Use the plastic opening tool to pry open the side cover.

## Step 8



- Flip the printer so that you are facing the underside.
- Use the plastic opening tool to remove the corner of the side panel from the pin.
  - Plastic pin.

## Step 9



- Using the plastic opening tool, remove the side panel by loosening it from the bottom of the printer.

## Step 10 — LCD



- Using the plastic opening tool, pry off the top cover of the LCD assembly (within the red box in the first picture).
- ⓘ Pry around the front and side edges for the easiest removal.

## Step 11



- After removing the top cover of the LCD assembly, remove the LCD using the plastic opening tool.

## Step 12



- Completely remove the LCD by disconnecting the ribbon cable from the LCD with a gentle pull.

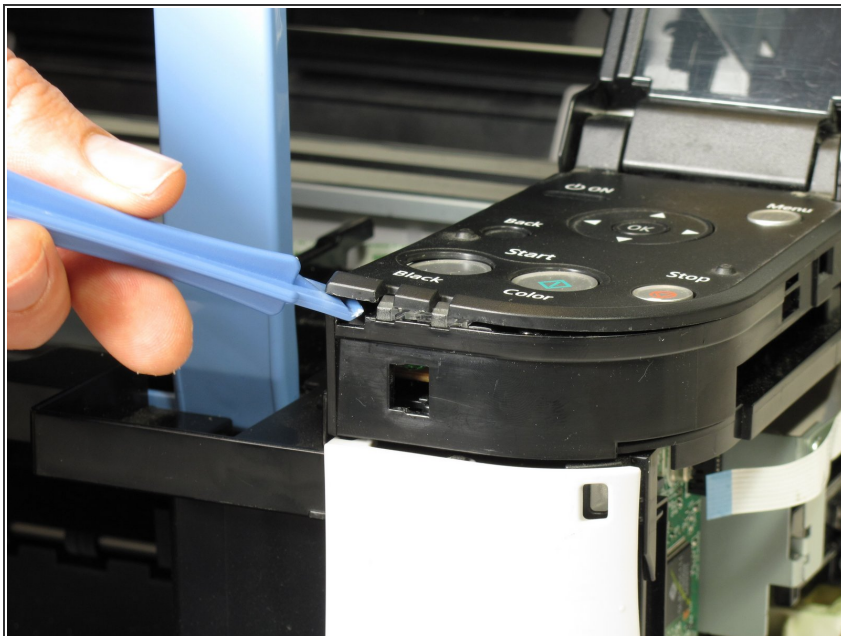


## Step 13 — Buttons



- Locate the buttons on the printer.

## Step 14



- Using the plastic opening tool, gently pry around the button cover to remove it from its fixture.

## Step 15



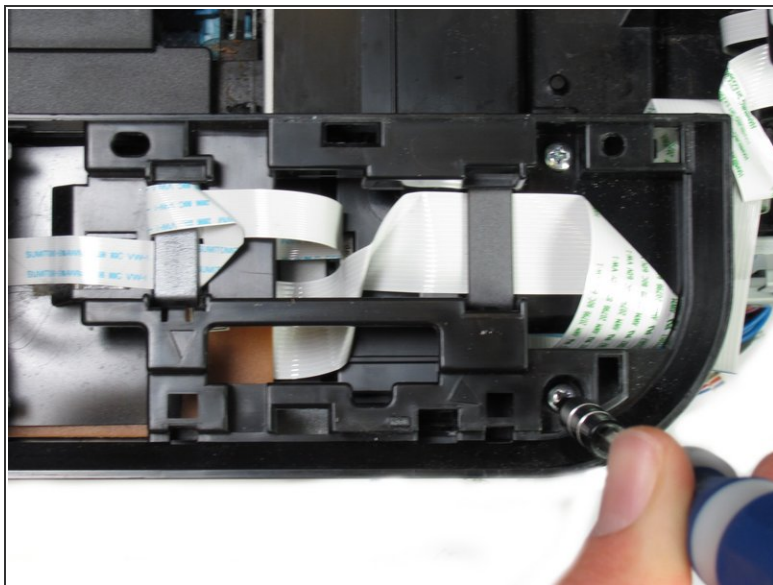
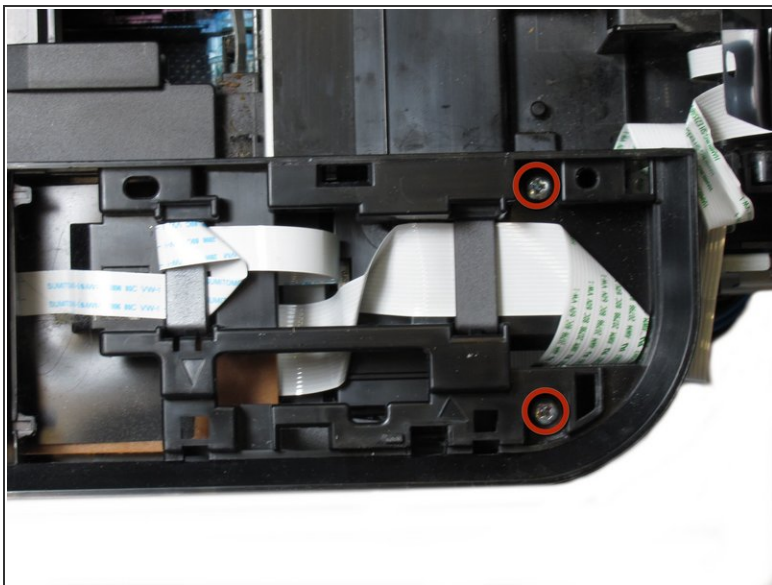
- Remove the following five Philips screws:
  - Five 7.65 mm Philips #1 screws

## Step 16



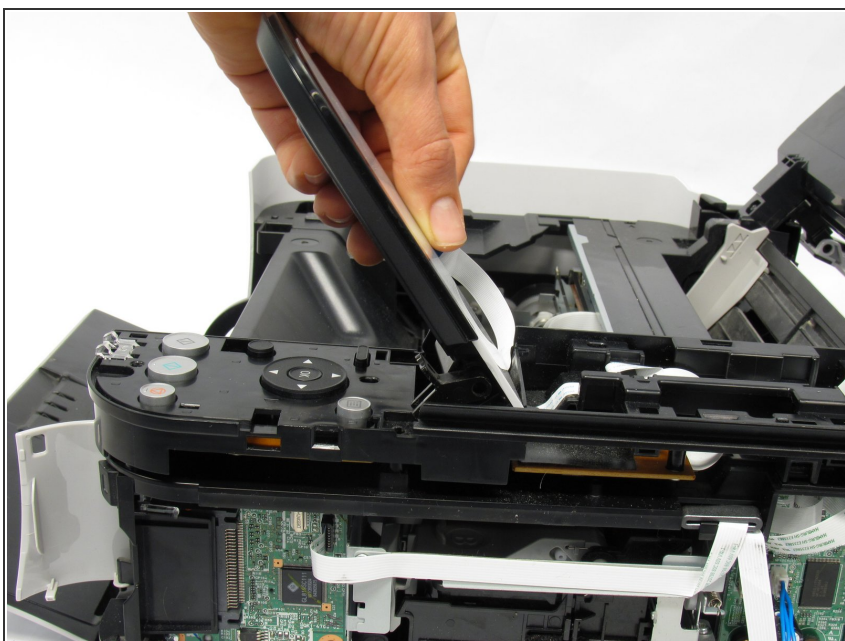
- Using the plastic opening tool, gently pry around the cover behind the LCD Screen to remove it from its fixture.

## Step 17



- Remove the two screws using the Phillips #1 screwdriver.
  - Two 7.8 mm Phillips #1 screws

## Step 18



- Gently pull the LCD screen up to remove it from its fixture.

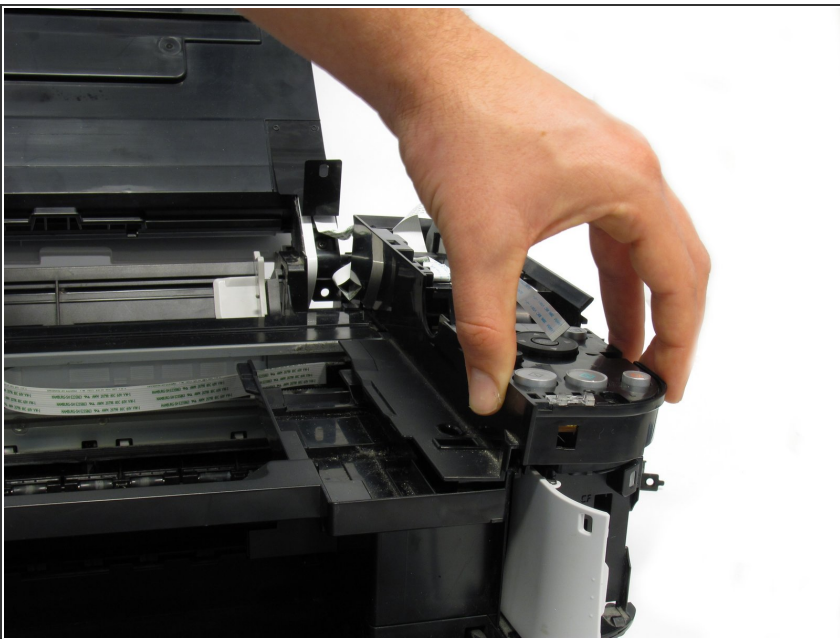


## Step 19



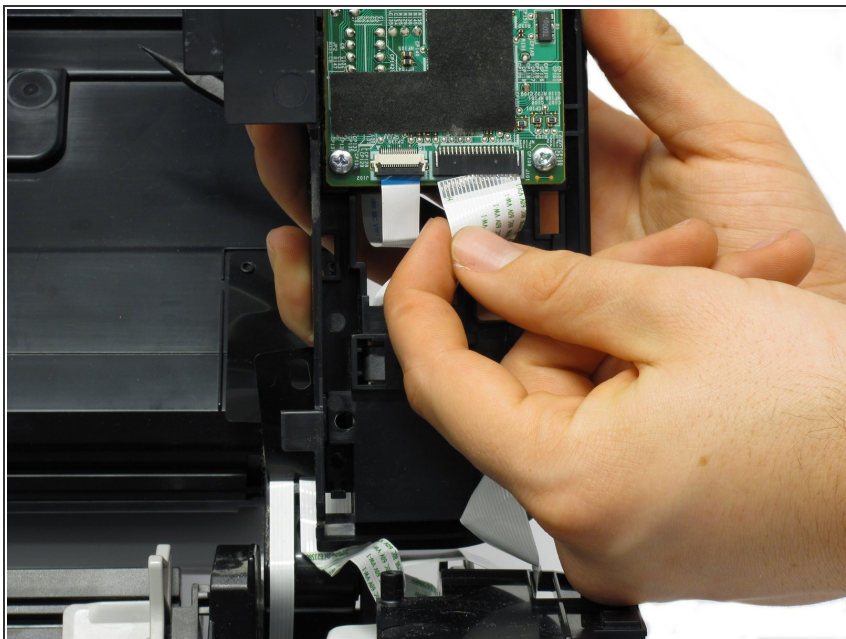
- Use the plastic opening tool to pry off the plastic button assembly.

## Step 20



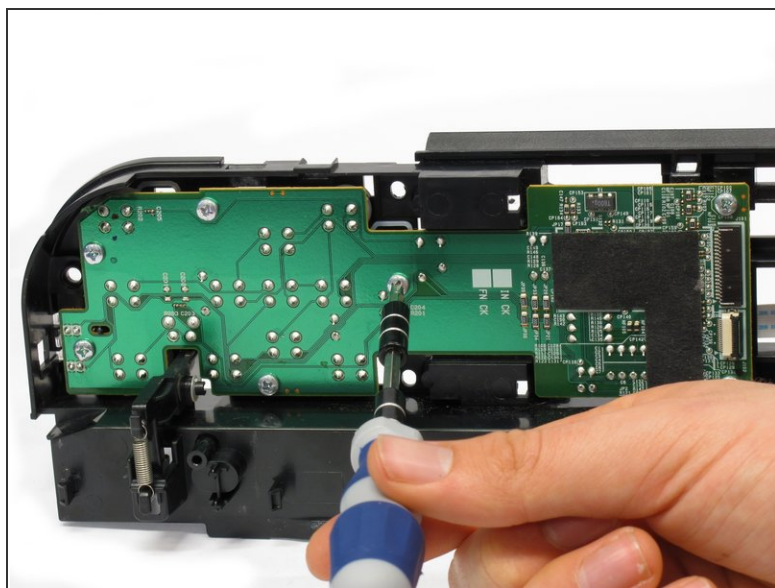
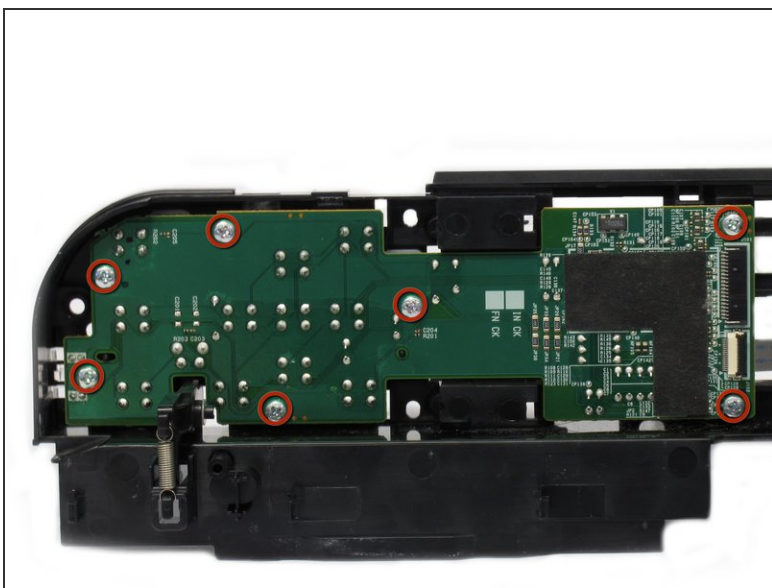
- Gently pull the plastic button assembly up to remove it.
- ⚠ The plastic button assembly has a ribbon cable connected on the bottom, so make sure to be careful pulling it.

## Step 21



- Remove the ribbon cable connected to the backside of the plastic button assembly.

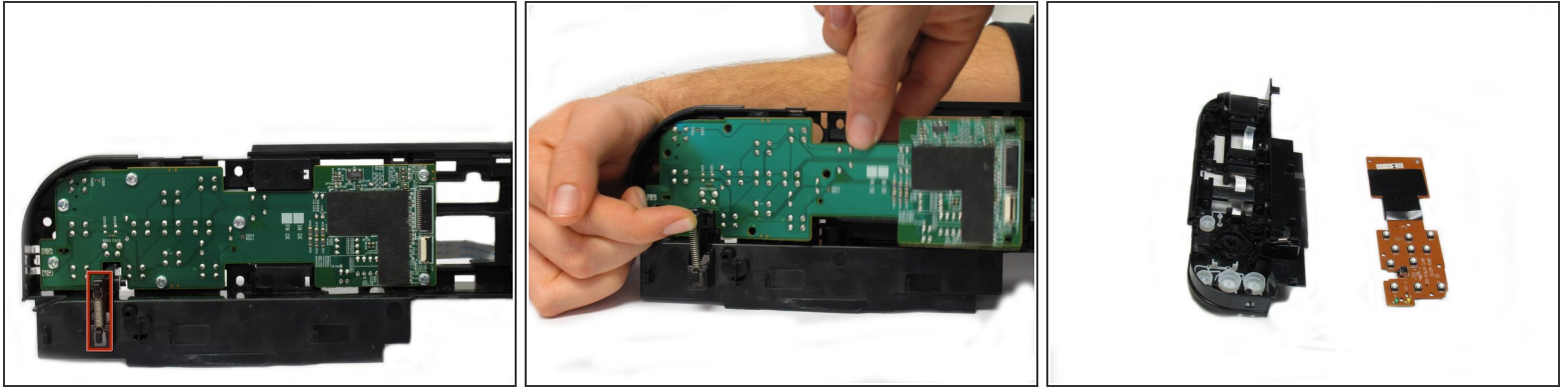
## Step 22



- Remove the seven screws using the Phillips #1 screwdriver.
  - Seven 8.7 mm Phillips #1 screws



## Step 23



- Locate the spring that holds the PCB in place on the bottom left of the plastic button assembly.
- Gently lift the spring and pull the board out of its plastic button assembly.

## Step 24



- Remove the buttons from the plastic button assembly.
- Buttons

To reassemble your device, follow these instructions in reverse order.