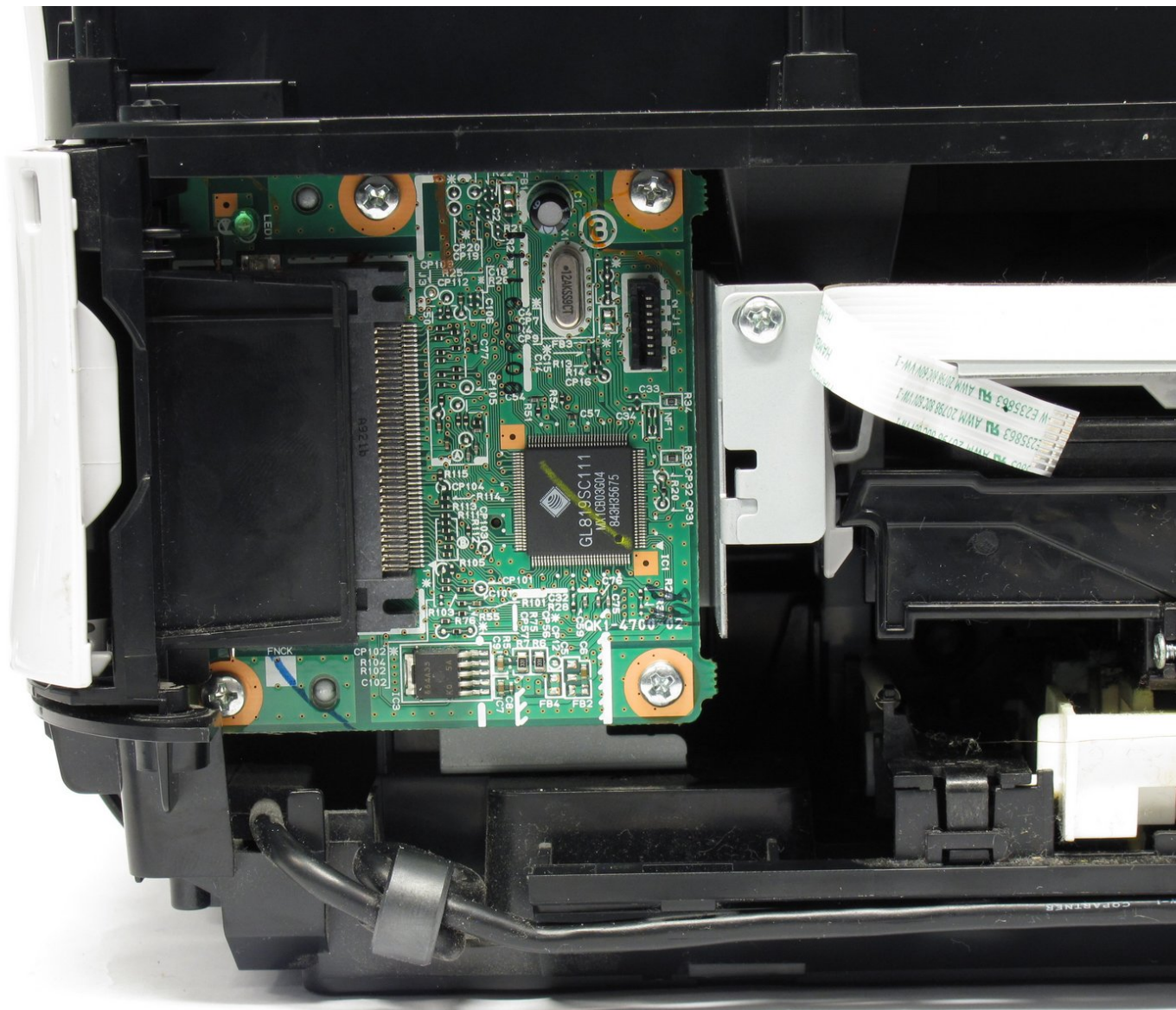




# Canon Pixma MP480 Data Port Replacement

Use this guide to replace the card readers at the front-right of the printer.

Written By: Steven MacLean



## INTRODUCTION

Please complete the dis-assembly guide before attempting to install new data ports, as it is a prerequisite.

Use this guide to replace a broken data port to get your USB and card readers back.



### TOOLS:

- [Phillips #1 Screwdriver](#) (1)
- [Spudger](#) (1)



### PARTS:

- [Canon Pixma MP480 Data Port](#) (1)

## Step 1 — Rear and Side Panel



- Remove the following two Phillips screws:
  - Two 7.85 mm Phillips #1 screws

## Step 2



- Pull the back cover off by lifting up on the cover.
- ⓘ You may need to pull firmly as it requires quite a bit of force.

### Step 3



- Open the front tray.

### Step 4



- Lift the scanner compartment.



## Step 5



- After opening up the scanner compartment, make sure the blue lever locks into place, keeping the compartment open.

## Step 6



- Push the blue lever back while twisting it clockwise in order to remove the lever from its slot.
- After removing the lever, close the scanner compartment and the scanner cover.

## Step 7



- Use the plastic opening tool to pry open the side cover.

## Step 8



- Flip the printer so that you are facing the underside.
- Use the plastic opening tool to remove the corner of the side panel from the pin.
  - Plastic pin.

## Step 9



- Using the plastic opening tool, remove the side panel by loosening it from the bottom of the printer.

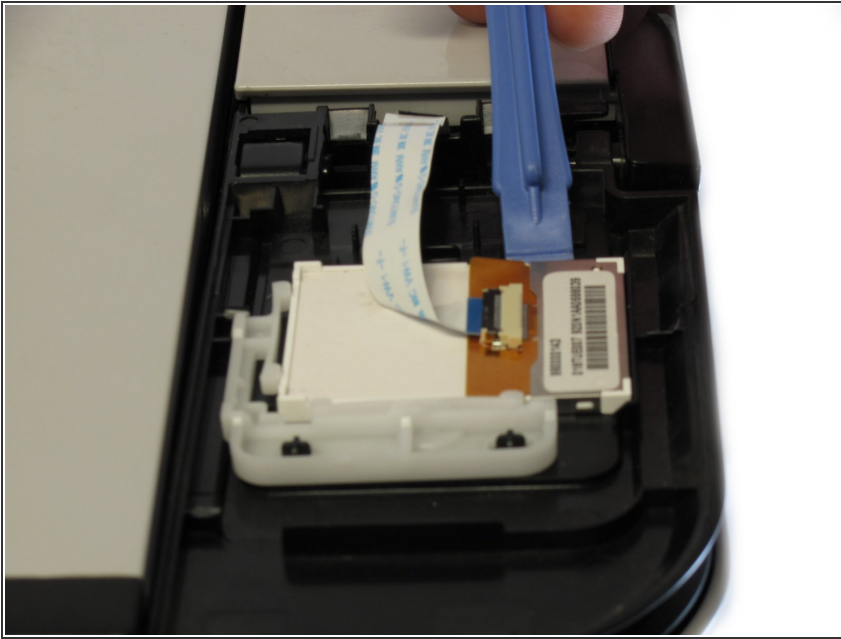
## Step 10 — LCD



- Using the plastic opening tool, pry off the top cover of the LCD assembly (within the red box in the first picture).

ⓘ Pry around the front and side edges for the easiest removal.

## Step 11



- After removing the top cover of the LCD assembly, remove the LCD using the plastic opening tool.

## Step 12



- Completely remove the LCD by disconnecting the ribbon cable from the LCD with a gentle pull.

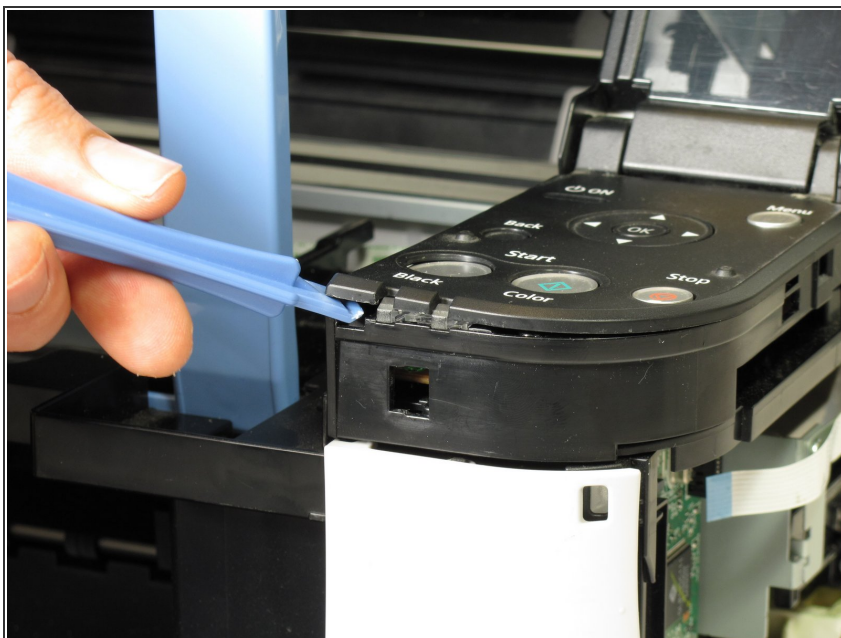


## Step 13 — Buttons



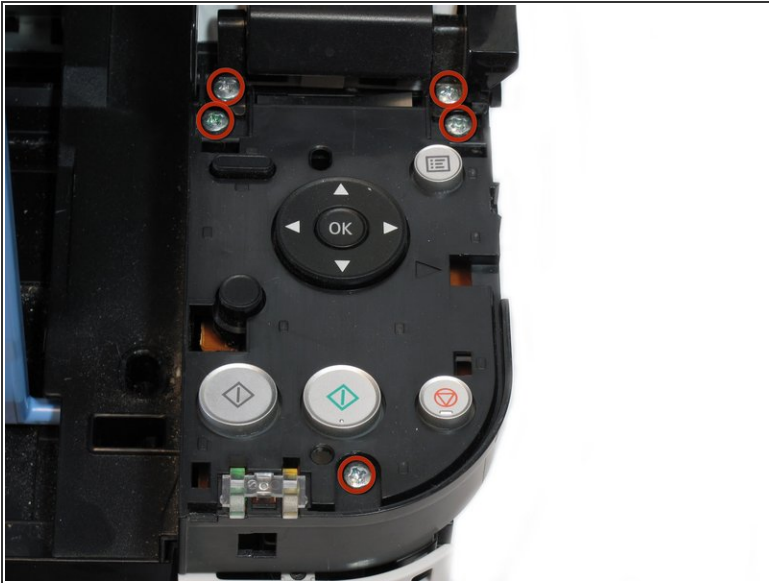
- Locate the buttons on the printer.

## Step 14



- Using the plastic opening tool, gently pry around the button cover to remove it from its fixture.

## Step 15



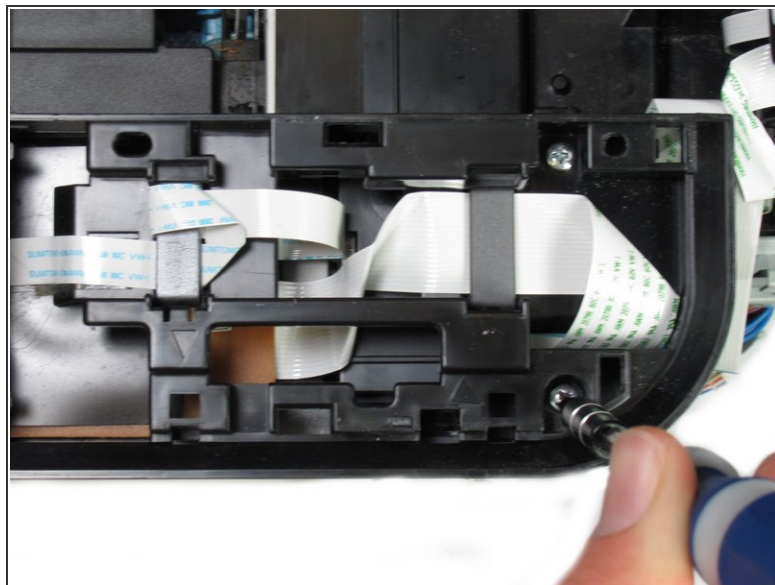
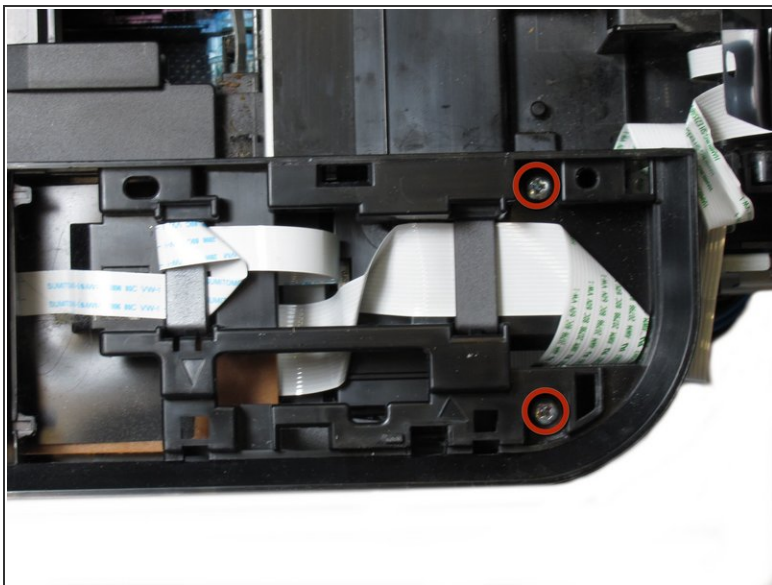
- Remove the following five Philips screws:
  - Five 7.65 mm Philips #1 screws

## Step 16



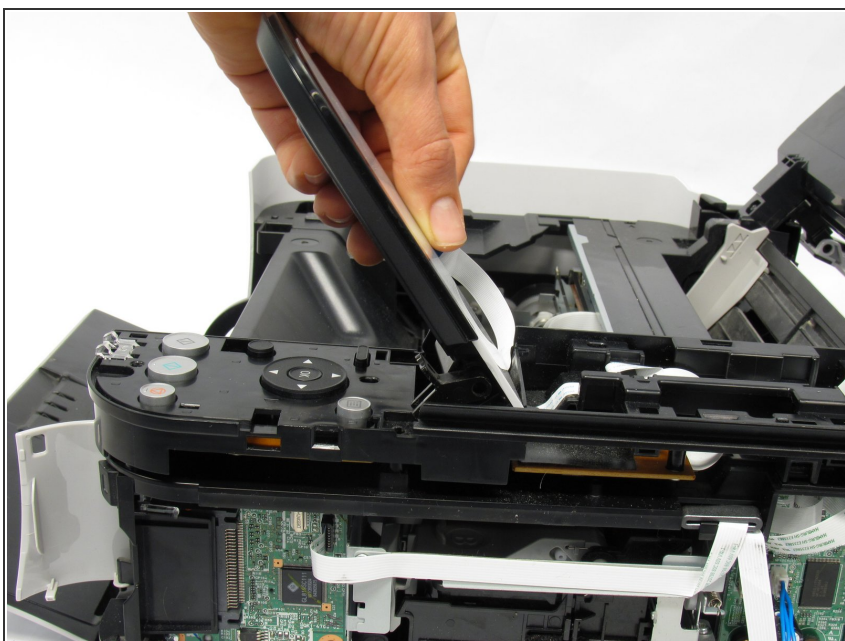
- Using the plastic opening tool, gently pry around the cover behind the LCD Screen to remove it from its fixture.

## Step 17



- Remove the two screws using the Phillips #1 screwdriver.
  - Two 7.8 mm Phillips #1 screws

## Step 18



- Gently pull the LCD screen up to remove it from its fixture.

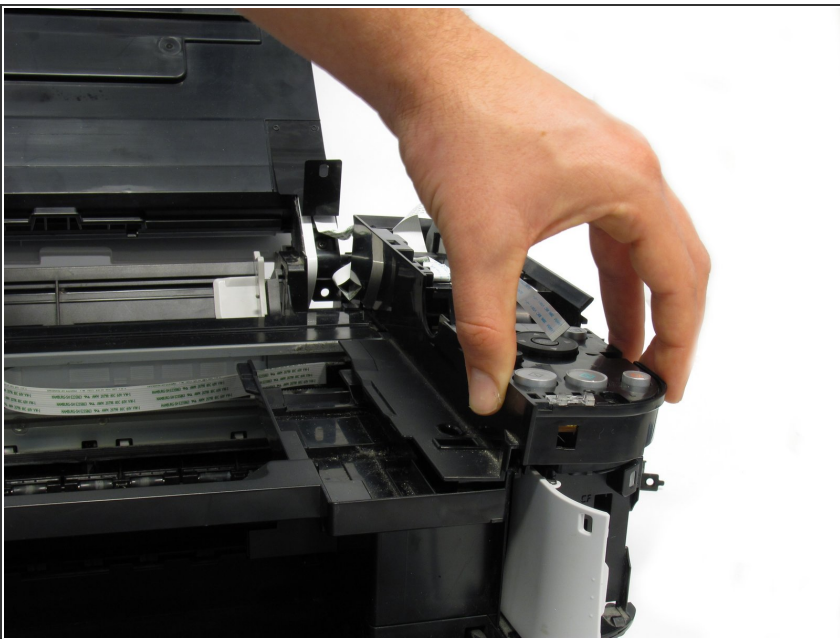


## Step 19



- Use the plastic opening tool to pry off the plastic button assembly.

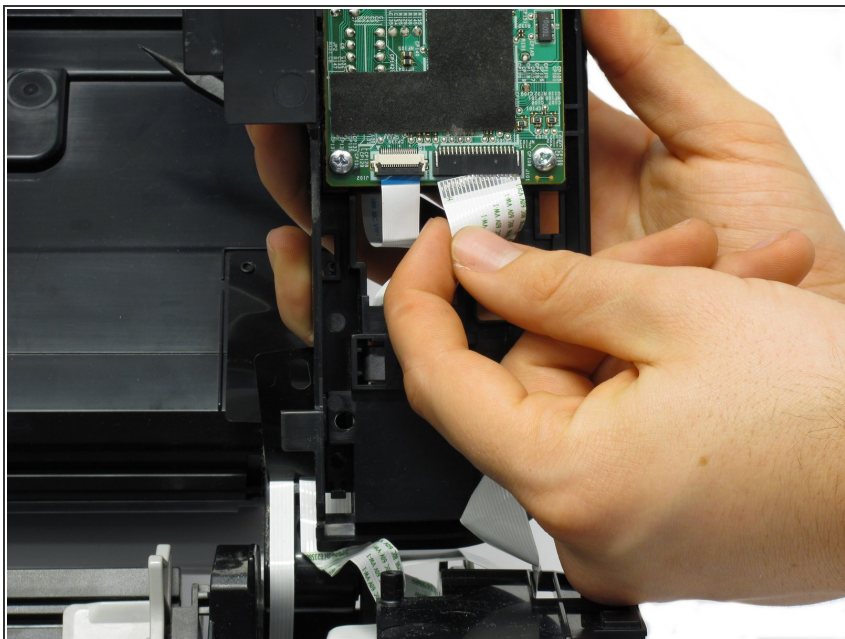
## Step 20



- Gently pull the plastic button assembly up to remove it.
- ⚠ The plastic button assembly has a ribbon cable connected on the bottom, so make sure to be careful pulling it.

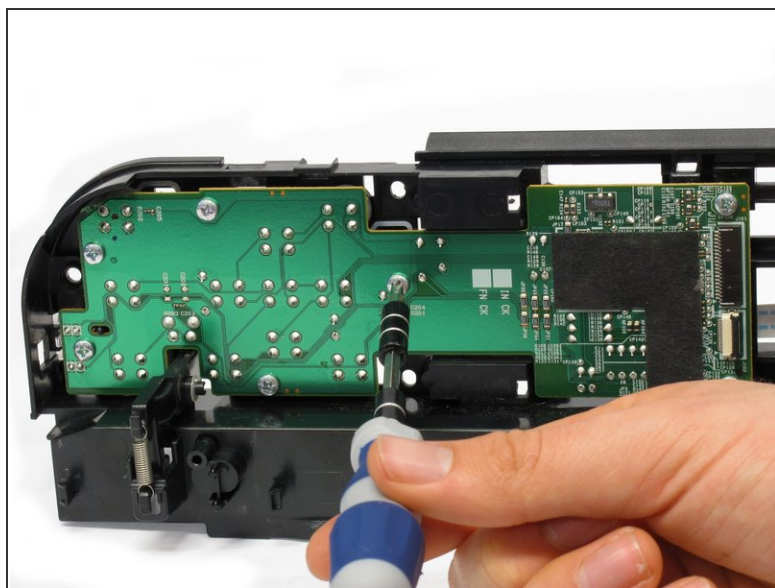
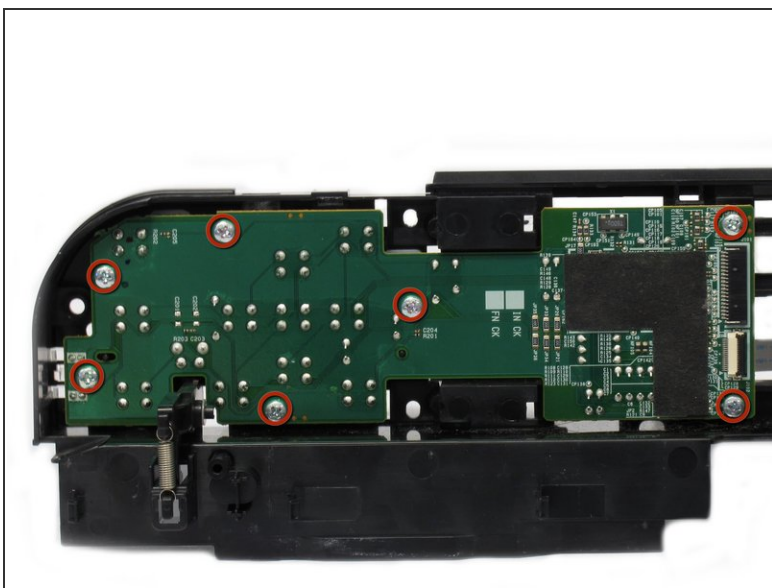


## Step 21



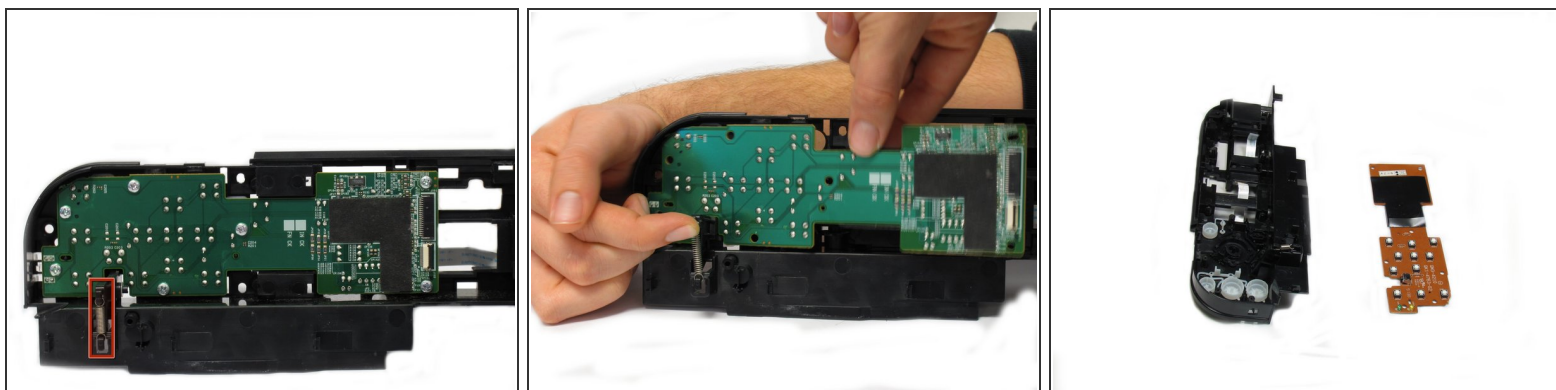
- Remove the ribbon cable connected to the backside of the plastic button assembly.

## Step 22



- Remove the seven screws using the Phillips #1 screwdriver.
  - Seven 8.7 mm Phillips #1 screws

## Step 23



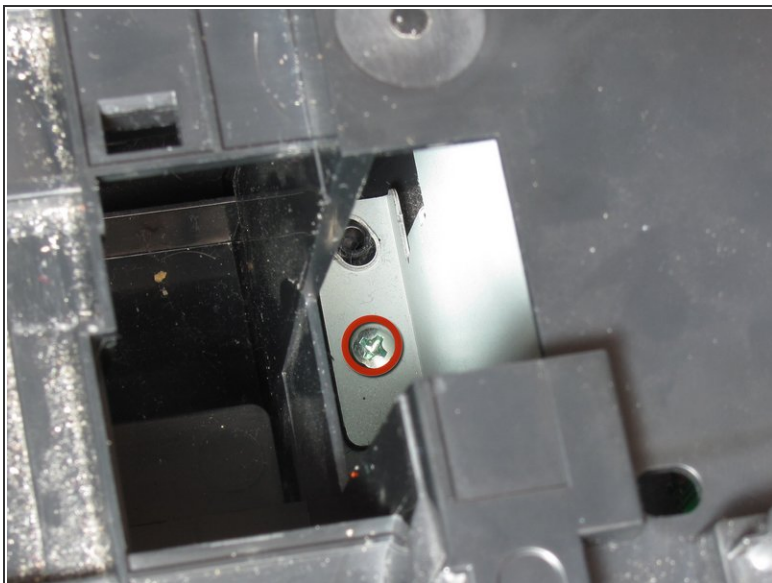
- Locate the spring that holds the PCB in place on the bottom left of the plastic button assembly.
- Gently lift the spring and pull the board out of its plastic button assembly.

## Step 24



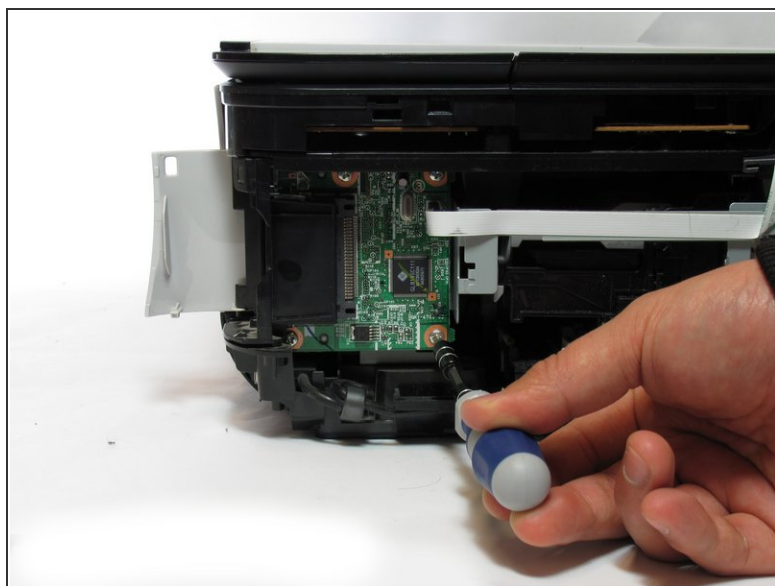
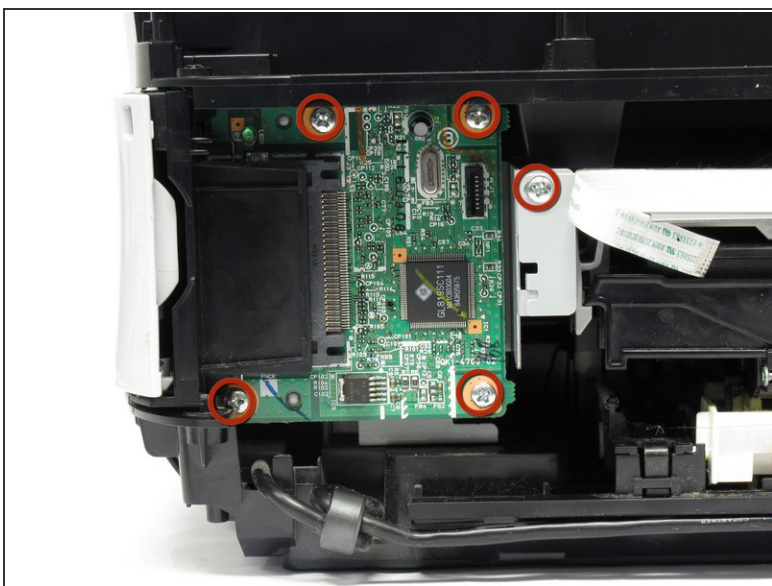
- Remove the buttons from the plastic button assembly.
- Buttons

## Step 25 — Data Port



- Remove the screw using the Phillips #1 screwdriver.
- 7.5 mm Phillips #1 screw

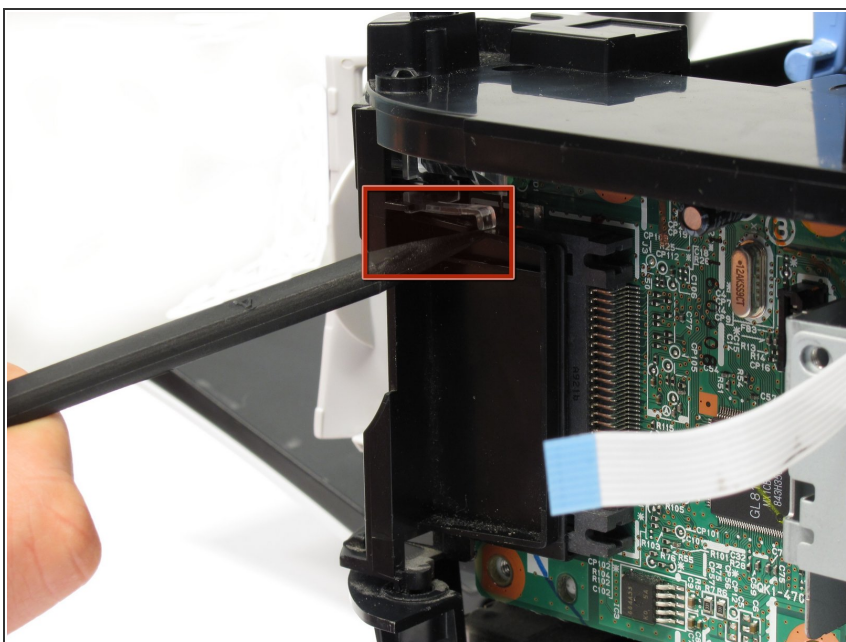
## Step 26



- Remove the five screws using the Phillips #1 screwdriver.
- Five 3.5 mm Phillips #1 screws

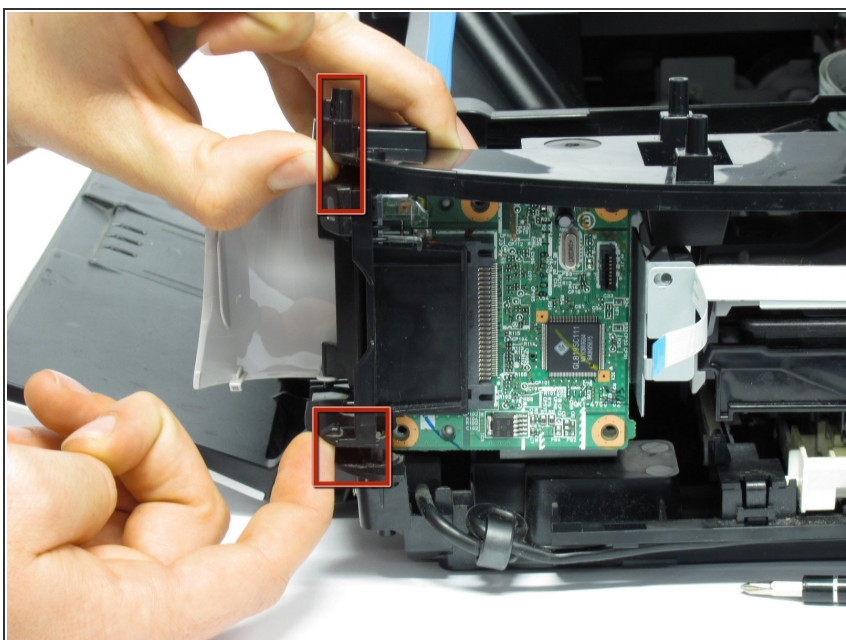


## Step 27



- Remove the small plastic clip using the spudger.
- Small plastic clip

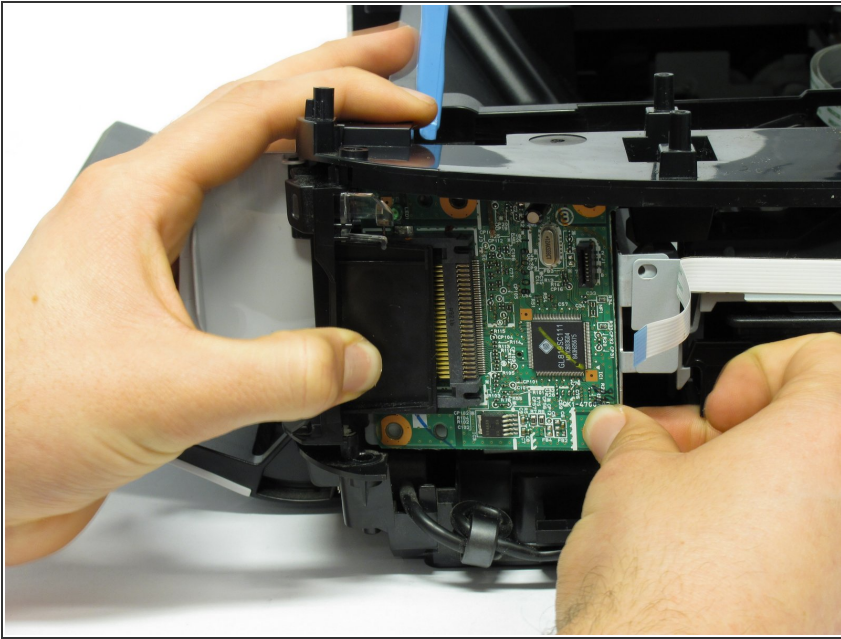
## Step 28



- Pull plastic inserts out of the holes in the top and bottom.
- Top and bottom plastic inserts



## Step 29



- Completely remove the board from the printer by pulling the board towards the back of the printer.
- ⓘ This requires effort and time as the board comes out little by little.

To reassemble your device, follow these instructions in reverse order.