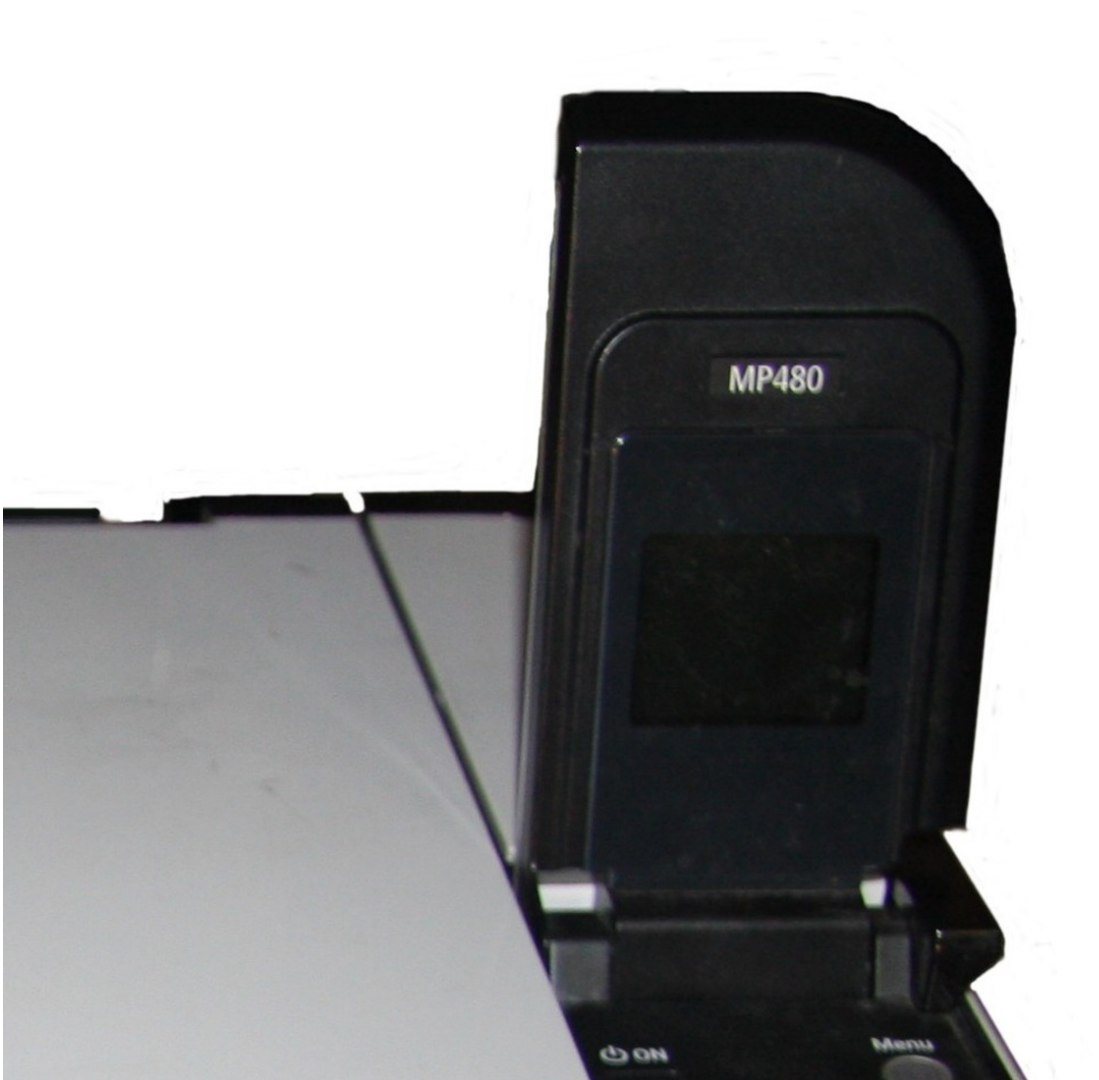




Canon Pixma MP480 LCD Replacement

This guide will show the necessary steps to replacing the LCD screen.

Written By: Steven MacLean



INTRODUCTION

If your LCD is cracked or not turning on replace it with this guide.



TOOLS:

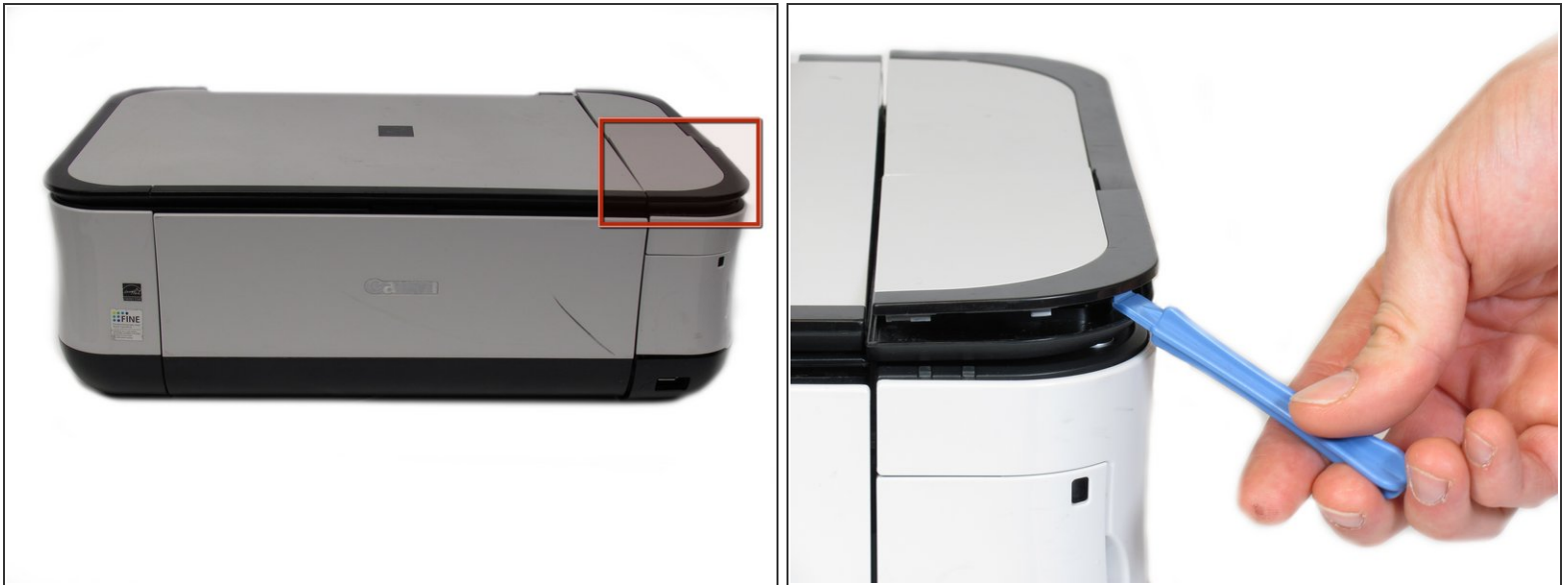
- [iFixit Opening Tools](#) (1)



PARTS:

- [Canon Pixma MP480 LCD Screen](#) (1)

Step 1 — LCD



- Using the plastic opening tool, pry off the top cover of the LCD assembly (within the red box in the first picture).
- ⓘ Pry around the front and side edges for the easiest removal.

Step 2



- After removing the top cover of the LCD assembly, remove the LCD using the plastic opening tool.

Step 3



- Completely remove the LCD by disconnecting the ribbon cable from the LCD with a gentle pull.

To reassemble your device, follow these instructions in reverse order.