



Canon Pixma MP480 Motherboard Replacement

Replace the motherboard in your Canon Pixma MP480.

Written By: nathan zorndorf



INTRODUCTION

This guide will show you how to detach the motherboard from the printer, in order to replace or repair it.



TOOLS:

- [Desoldering Braid](#) (1)
- [Phillips #1 Screwdriver](#) (1)
- [Rosin Flux](#) (1)
- [Solder](#) (1)
- [Soldering Iron](#) (1)



PARTS:

- [Canon Pixma MP480 Motherboard](#) (1)

Step 1 — Rear and Side Panel



- Remove the following two Phillips screws:
 - Two 7.85 mm Phillips #1 screws

Step 2



- Pull the back cover off by lifting up on the cover.
- ⓘ You may need to pull firmly as it requires quite a bit of force.

Step 3



- Open the front tray.

Step 4



- Lift the scanner compartment.

Step 5



- After opening up the scanner compartment, make sure the blue lever locks into place, keeping the compartment open.

Step 6



- Push the blue lever back while twisting it clockwise in order to remove the lever from its slot.
- After removing the lever, close the scanner compartment and the scanner cover.

Step 7



- Use the plastic opening tool to pry open the side cover.

Step 8



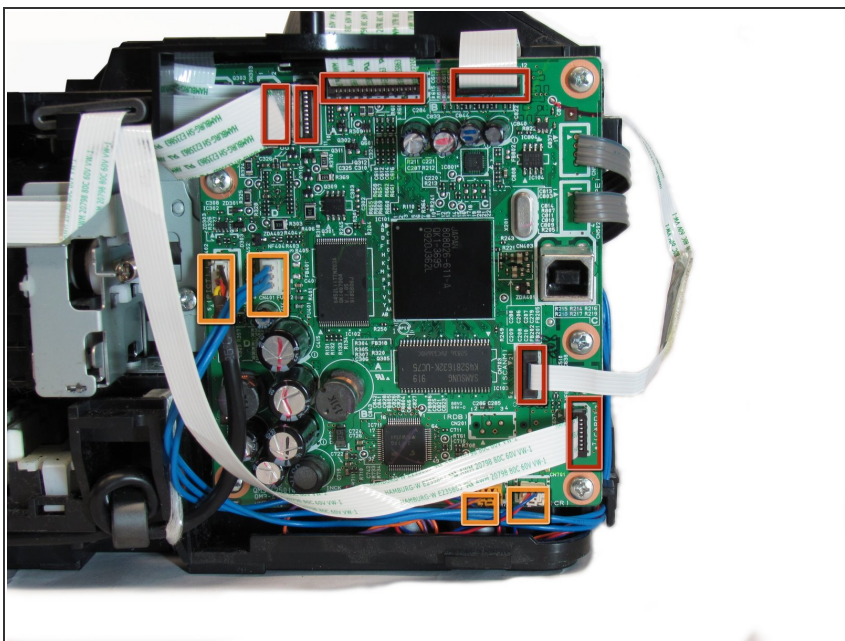
- Flip the printer so that you are facing the underside.
- Use the plastic opening tool to remove the corner of the side panel from the pin.
 - Plastic pin.

Step 9



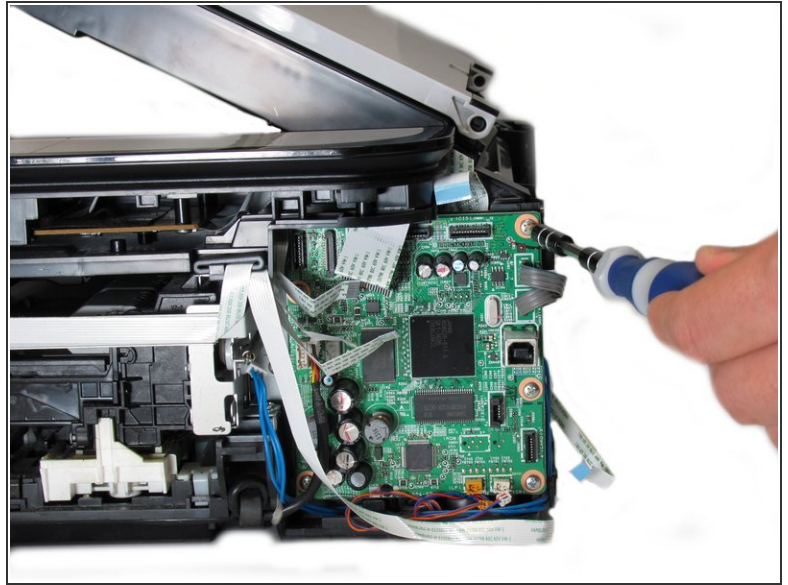
- Using the plastic opening tool, remove the side panel by loosening it from the bottom of the printer.

Step 10 — Motherboard



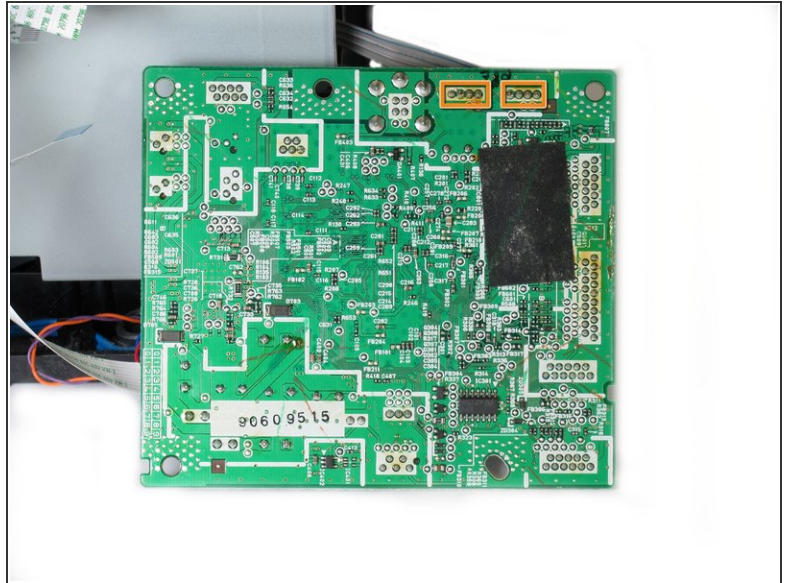
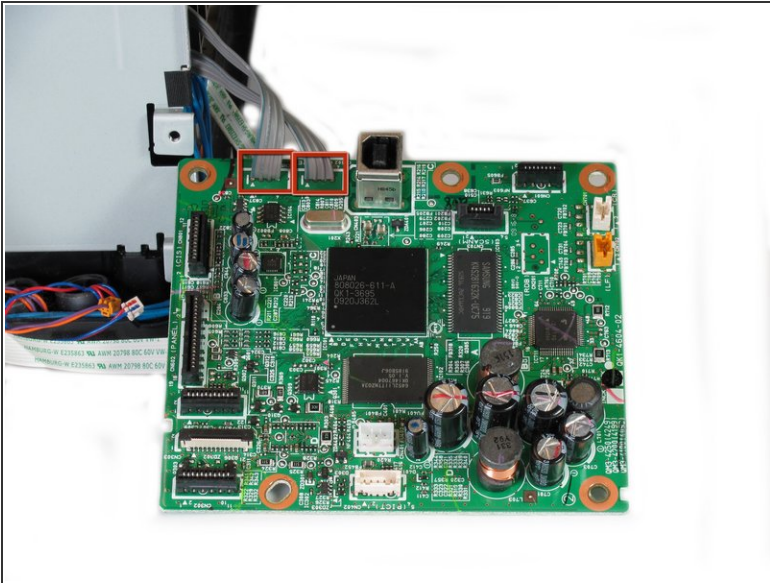
- Gently pull the 6 ribbon wires out.
- Gently pull the 4 molded cable assemblies out.

Step 11



- Unscrew the five silver Phillips screws that secure the motherboard:
 - Five 3.65mm Phillips #1 screws.

Step 12



- Once all wires and screws have been removed, gently take the motherboard out of the printer.
 - These wires are soldered onto the bottom of the PCB and must be de-soldered in order to completely detach the motherboard from the printer.
- ⚠ If you do not know how to operate a soldering iron, do not attempt to finish this guide.
- De-solder these eight solder joints on the bottom of the motherboard.
 - When reinstalling the motherboard back into the printer, solder the highlighted joints (in orange markers in the second photo) back onto the board.

Congratulations on successfully removing the motherboard from the printer! To reassemble the motherboard, follow these instructions in reverse order.