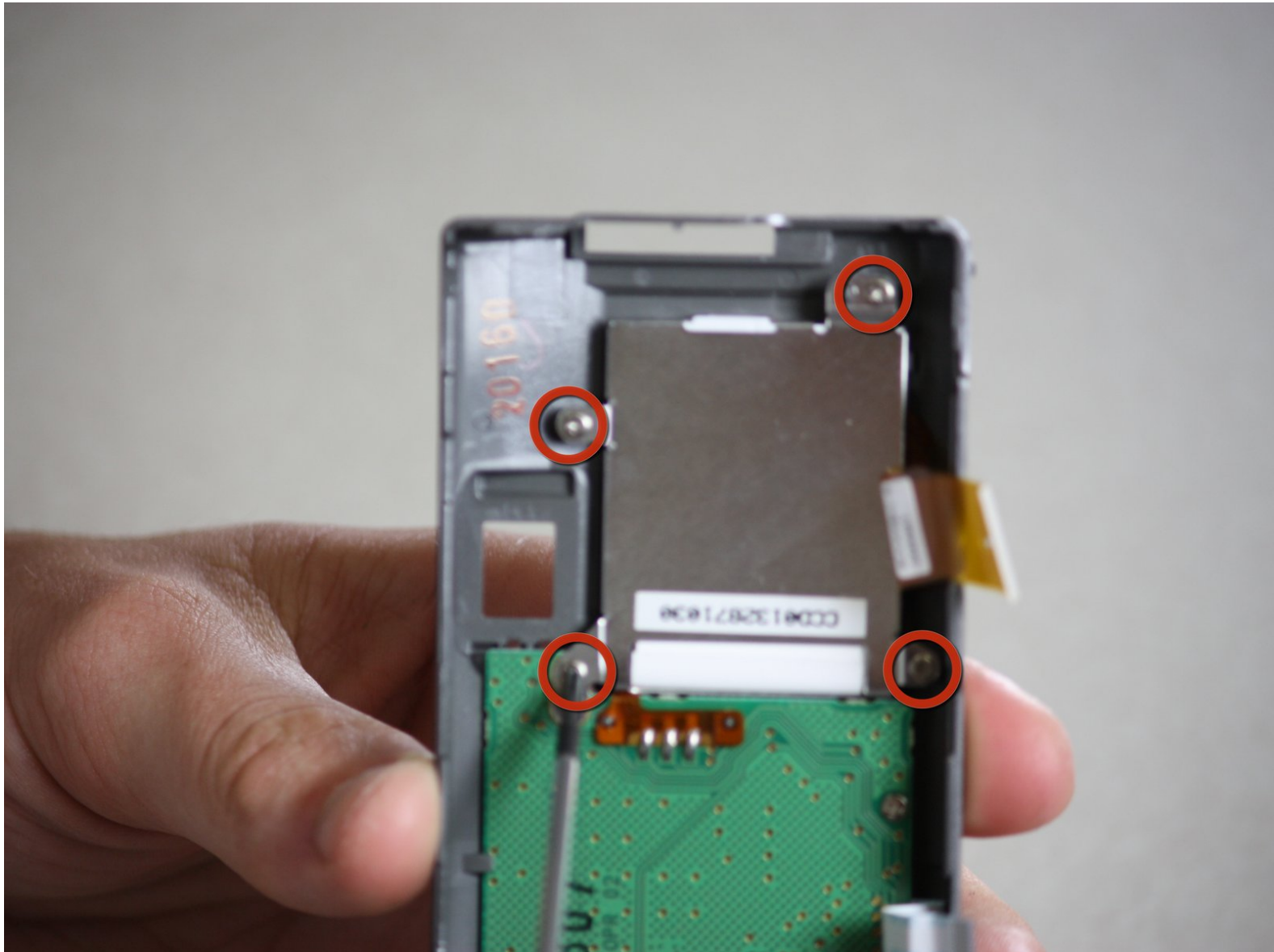




Canon PowerShot A200 LCD Display Replacement

Install a new LCD Display on the Canon PowerShot A200.

Written By: Jeff Barich



INTRODUCTION

If the LCD Display is cracked or not functioning, you can replace it with a new one. Once the case has been disassembled, a new LCD Display can be installed.

TOOLS:

- [Tweezers](#) (1)
 - [Phillips #00 Screwdriver](#) (1)
 - [iFixit Opening Tools](#) (1)
 - [Soldering Workstation](#) (1)
-

Step 1 — Disassembling the Canon PowerShot A200 Case



- Use the *Phillips head screwdriver*, rotating counterclockwise, to remove the two screws at the bottom of the camera. Set screws aside.

Step 2



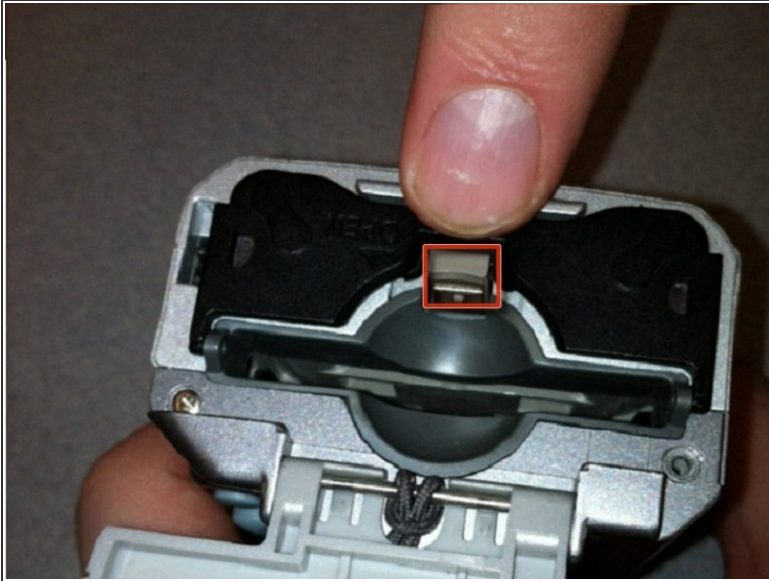
- Hold the camera right side up with the LCD screen facing you. On the left edge of the camera there is one screw visible. There is also a rubber covering. Slide the rubber covering out of the way to expose another screw.
- Use a *Phillips head screwdriver*, rotating counterclockwise, to remove both screws. Set the screws aside.

Step 3



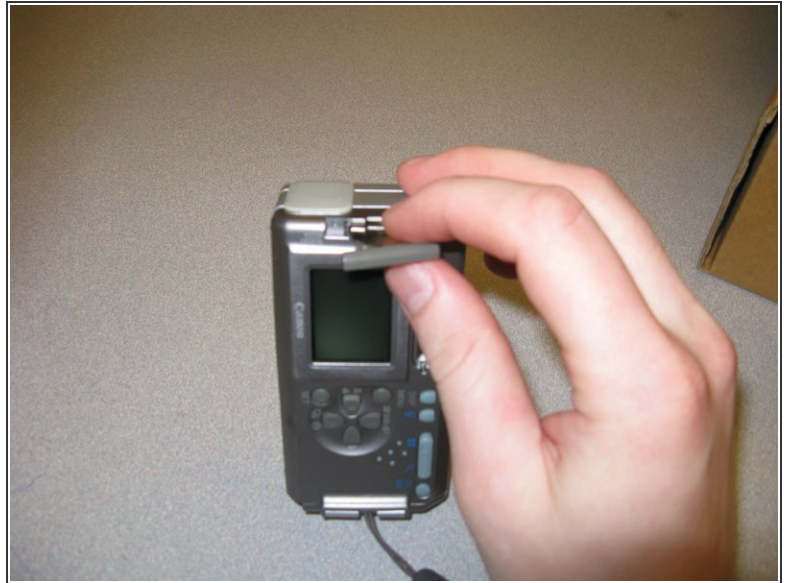
- Hold the camera right side up with the LCD screen facing you. Open the battery compartment on the right side of the camera casing by pushing slightly in the direction of the arrow.
- ⓘ You may see a memory card. If so, remove the card by pushing down on it. When it pops loose, use your fingers to gently pull it out.
- Use the *Phillips head screwdriver*, rotating counterclockwise, to remove the two screws on either side of the memory card slot. Set the screws aside.

Step 4



- Pull the grey tab towards the back of the camera. Lift the black section of the battery cover up, exposing the battery slots.
 - Use the *Phillips head screwdriver*, rotating counter clockwise to remove the two screws on either side of the battery slots. Set the screws aside.
- ⚠ When reassembling the camera it is important that the holes for the screws on either side of the battery slots align properly with the *interior* of the camera body.
- ⚠ When reassembling the camera the black section of the battery cover must lie flat over the battery slots and be held in place by the grey tab. You may have to pull the green part of the *inside* of the camera away from the grey tab in order to move the battery cover into place.

Step 5




- Hold the camera right side up with the LCD screen facing you. Remove the screen battery located to the left of the screen. Set it aside.

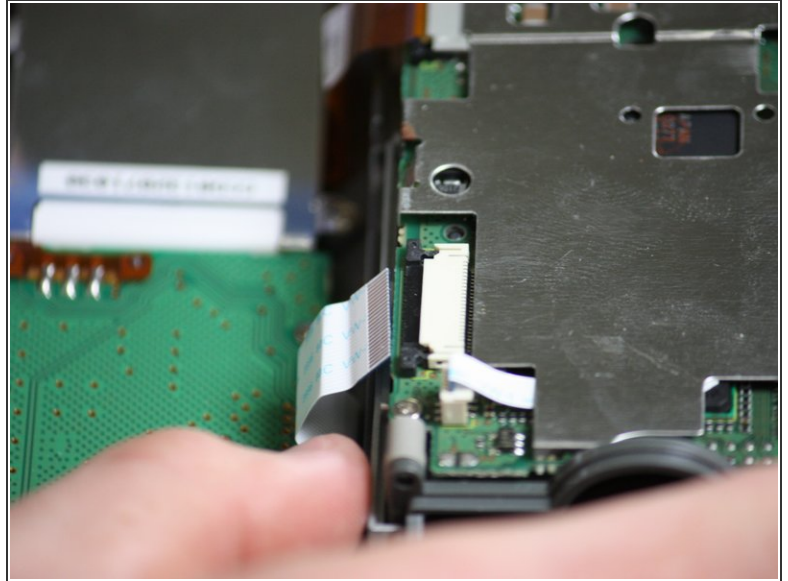
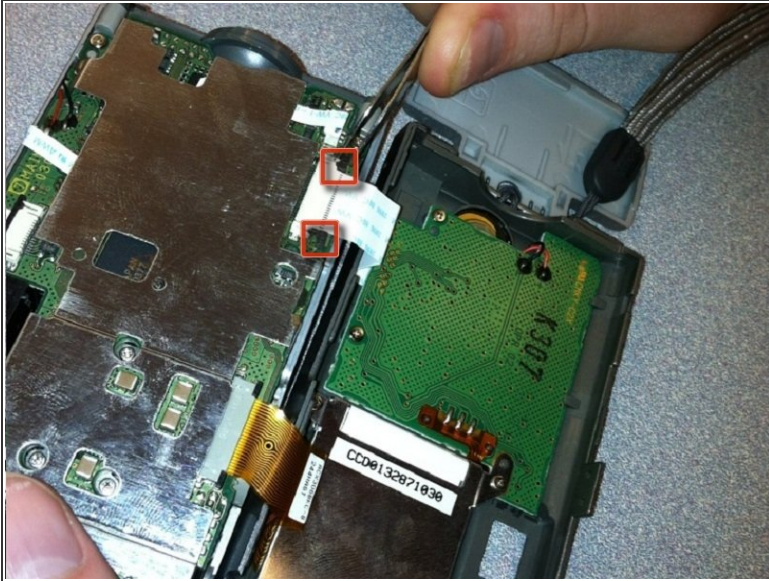
Step 6



- Gently pull the camera apart.

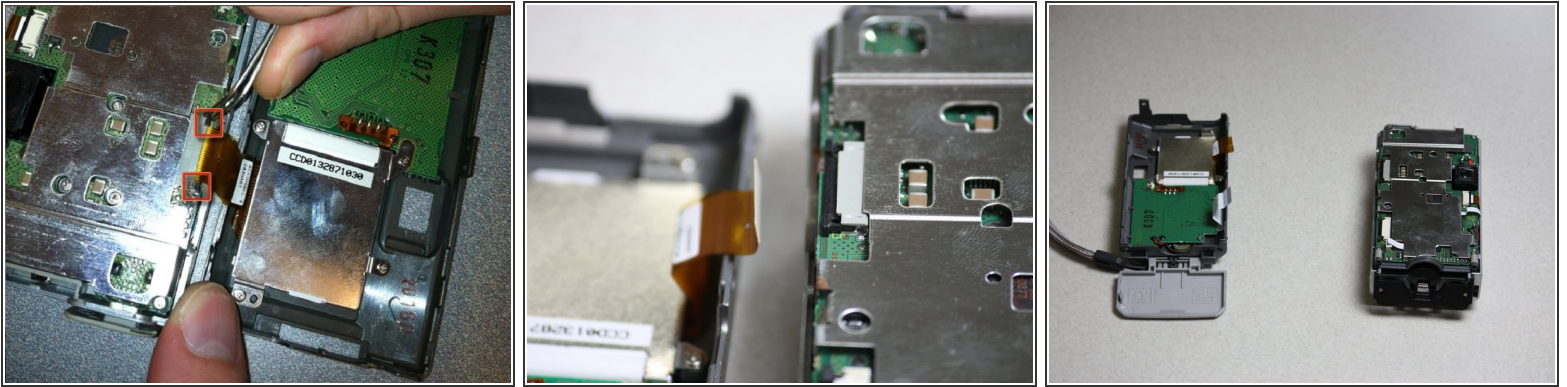
 Be careful. The two halves of the camera are still attached by two short ribbons at the bottom of the camera.

Step 7



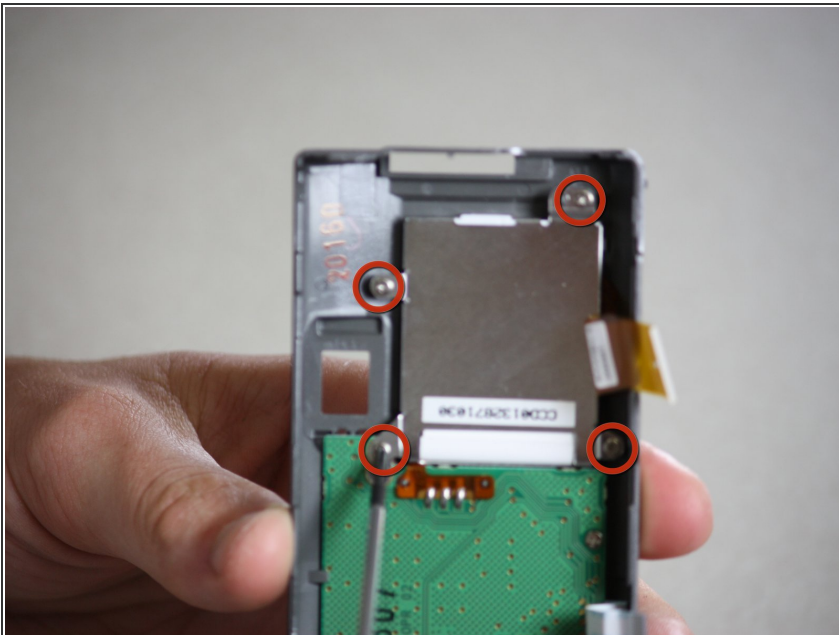
- On the front half of the camera, locate the black tabs on either side of the white ribbon.
- Use the *metal tweezers* to gently move the black tabs to the outside edges of the ribbon.
- Gently pull the white ribbon out of the connection.

Step 8



- On the front half of the camera, locate the black tabs on either side of the orange ribbon.
 - Use the *metal tweezers* to gently move the black tabs to the outside edges of the ribbon.
 - Gently pull the orange ribbon out of the connection.
- i** Your camera should now be in two separate pieces.

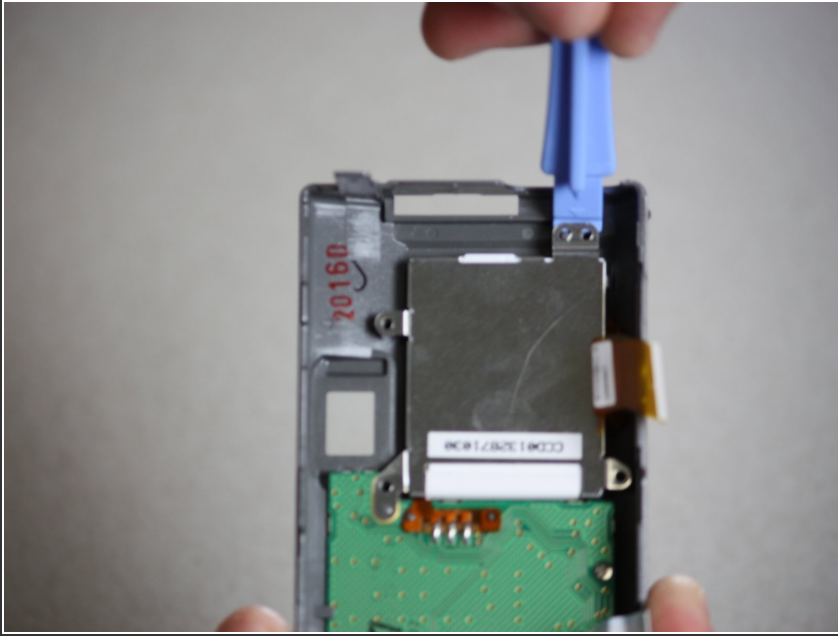
Step 9 — LCD Display



- Remove the camera case. Refer to the prerequisite guide *Disassembling the Canon PowerShot A200 Case* as needed.
- Locate the LCD Display. It is the thin, rectangular panel adjacent to the view finder.

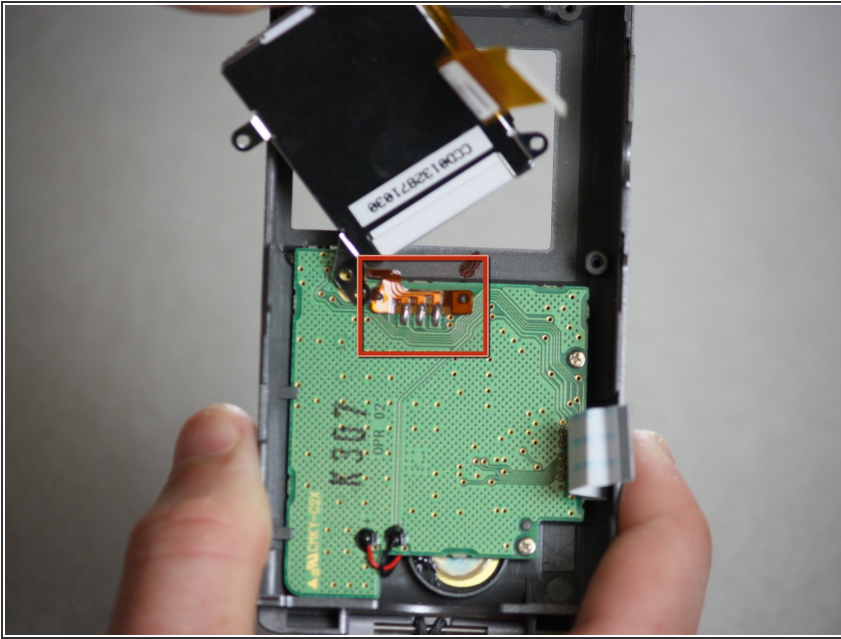
- Use the *Phillips head screwdriver*, rotating counter clockwise, to remove the four screws in each corner of the LCD Display. Set the screws aside.

Step 10



- Use the *plastic opening tool*, operating from the outside edge of the camera, to lift the LCD Display away from the back case.
- ⓘ The LCD Display will still be attached to the back of the camera case by an orange strip.

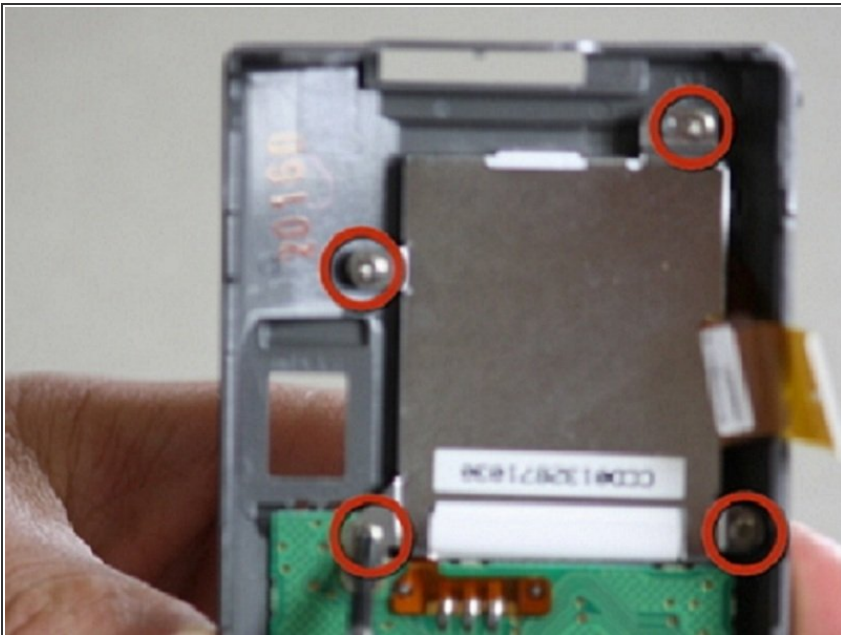
Step 11



- Use the *soldering kit* to [desolder](#) the LCD Display from the orange strip which is connected to the back of the camera.
- Use the *soldering kit* to attach your new LCD Display in place of the old one.

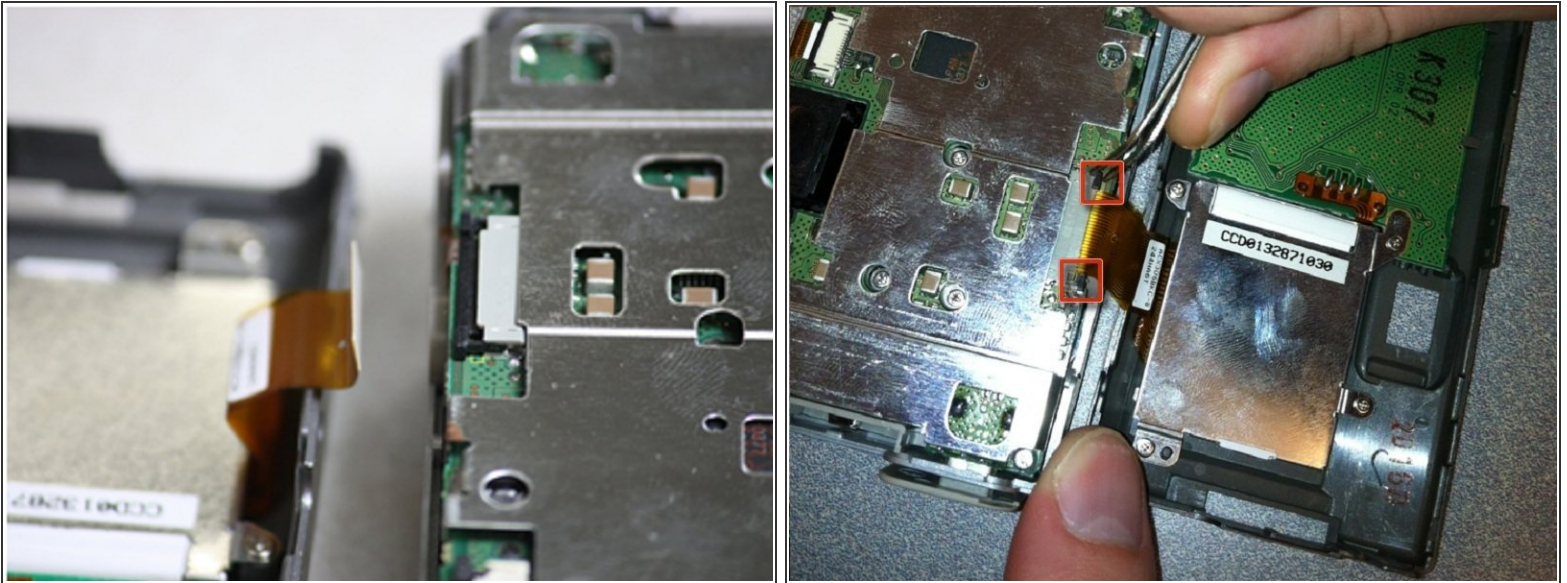
⚠ When soldering, allow enough slack in the orange strip so the LCD Display will lie flat, and the white bar will lie parallel with the electronic components embedded in the green panel.

Step 12



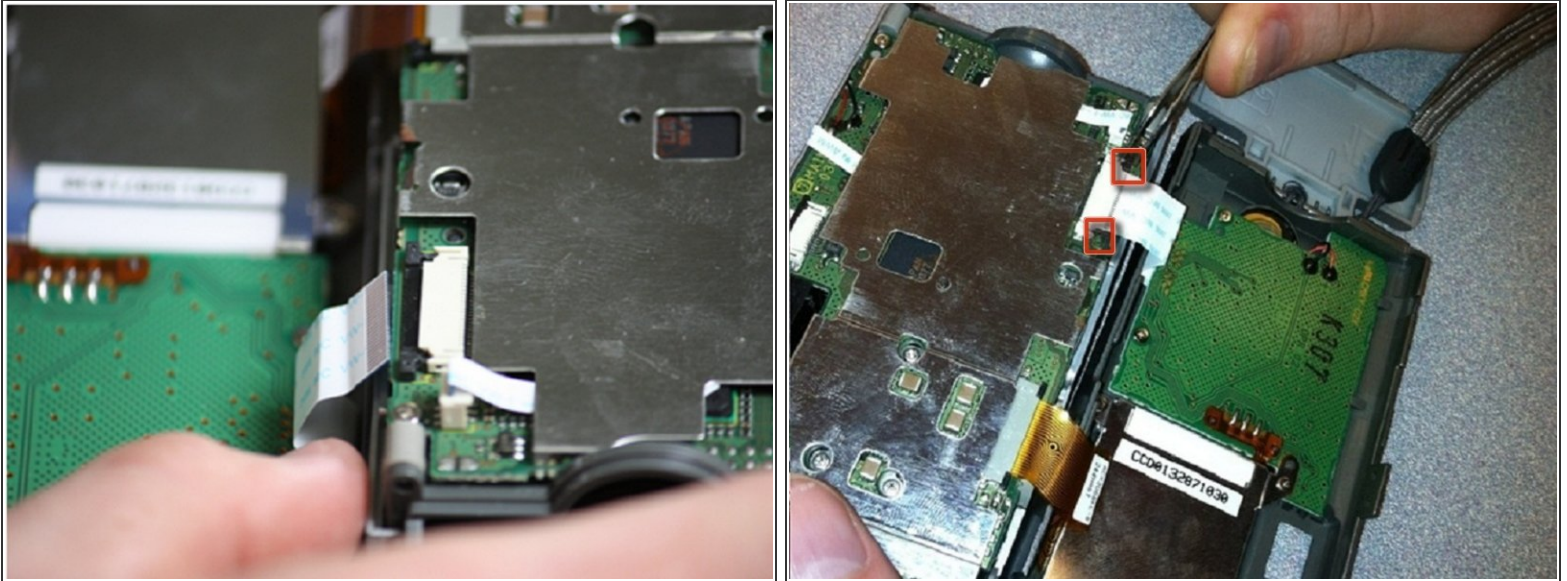
- Locate the four set aside screws. Use the *Phillips head screwdriver*, rotating clockwise, to screw one into each corner of your new LCD Display onto the back camera case.
- ⓘ To help with proper alignment of the LCD Display, fasten the screws in the following order: top left, bottom right, bottom left, top right.

Step 13



- Begin reassembling the camera with the orange strip with the yellow edge.
- Align the orange strip on the back half of the camera with its slot on the front part of the camera.
- Use the *metal tweezers* to insert the orange ribbon into the slot. Push the ribbon in as far as it can go into the slot.
- Use the *metal tweezers* to push the black tabs at each side of the slot toward the center. The tabs will hold the orange ribbon in place.

Step 14



- Align the white strip on the back half of the camera with its slot on the front part of the camera.
- Use the *metal tweezers* to insert the white strip into the slot. Push the strip in as far as it can go into the slot.
- Use the *metal tweezers* to push the black tabs at each side of the slot toward the center. The tabs will hold the white strip in place.

Step 15



- Carefully slide both halves of the camera together, making sure all tabs are aligned. Press the sides firmly together until you hear a click.

Step 16



- Insert the screen battery back into its slot adjacent to the LCD Display.
- ⓘ The positive side of the battery should face away from the LDC Display screen.

Step 17



- Open the outer battery cover.
- Use the *Phillips head screwdriver*, turning clockwise, to fasten two screws on each side of the battery case.
- Flip the black battery cover down and press until it is secured by the gray tab.
- Use the *Phillips head screwdriver*, turning clockwise, to fasten two screws on each side of the memory card slot.
- Shut the outer battery cover.

Step 18



- On the opposite side of the camera, use the *Phillips head screwdriver*, turning clockwise, to fasten two screws under the rubber cover.
- Once both screws are in place, put the rubber cover back in place.

Step 19



- On the bottom of the camera, use the *Phillips head screwdriver*, turning clockwise, to fasten two screws on either side of the tripod opening.
- The installation of your new LCD Display is complete.

Follow the instructions in the prerequisite guide [Disassembling the Canon PowerShot A200 Case](#). Once completed, proceed with installing a new LCD Display.