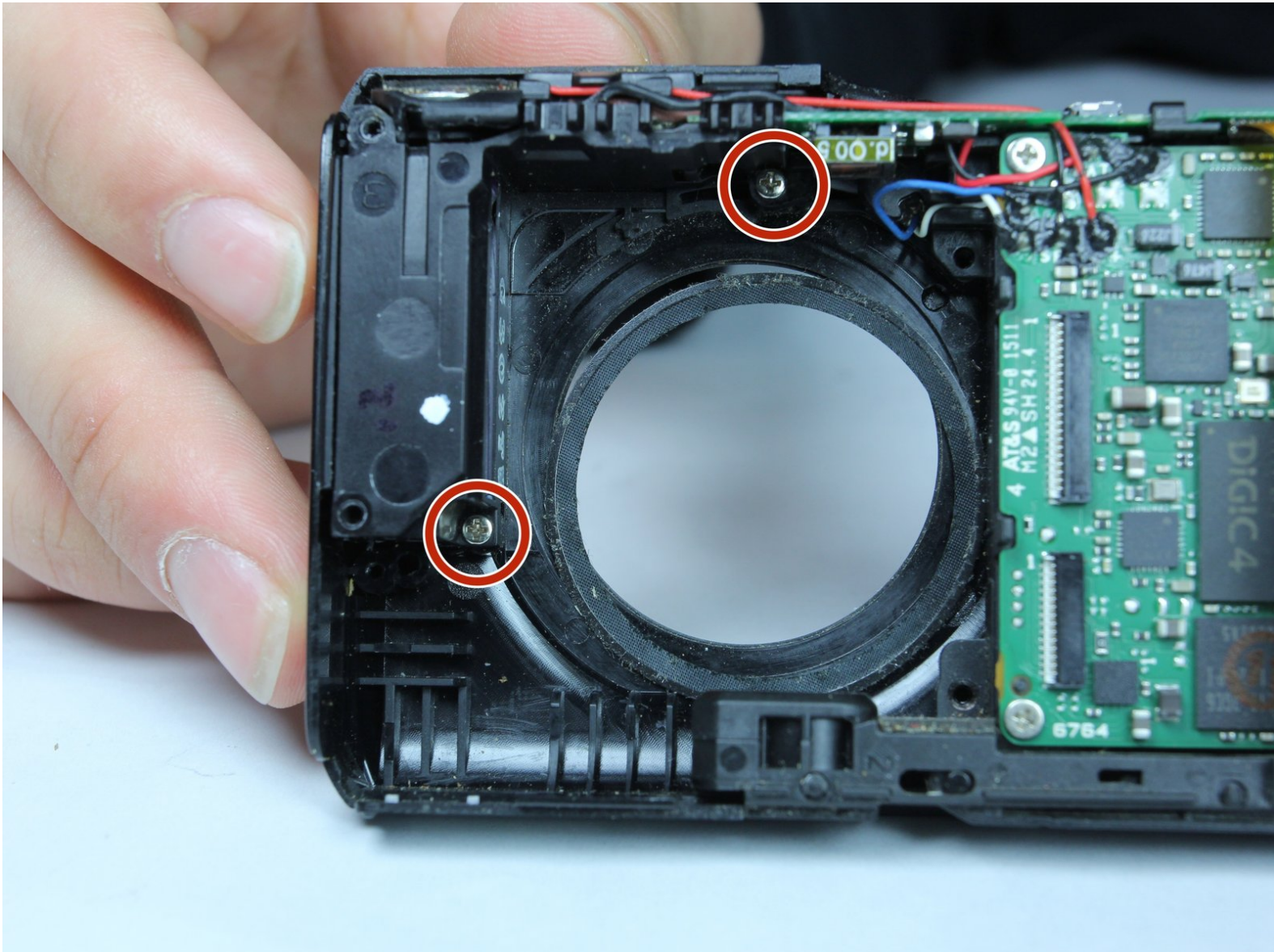




Canon PowerShot A2200 Front Cover Replacement

This guide will show you how to remove the front cover for replacement.

Written By: Benjamin Gee



INTRODUCTION

This replacement guide requires you to use a Phillips head screwdriver to remove the front cover of the device.



TOOLS:

- [Magnetic Project Mat](#) (1)
 - [Phillips #00 Screwdriver](#) (1)
 - [iFixit Opening Tools](#) (1)
-

Step 1 — Back Cover



- First, remove the batteries and memory card.
- Remove the 5.0 mm black screw with a Phillips #00 screwdriver.
- Remove the 5.0 mm silver screw with a Phillips #00 screwdriver.

Step 2



- Remove the 5.0 mm black screw on the right with a Phillips #00 screwdriver.

Step 3



- Remove the 5.0 mm screw on the left with a Phillips #00 screwdriver.

Step 4



- Begin taking off the back cover with a plastic opening tool.
- Begin by wedging the plastic opening tool behind the bottom left corner of the LCD screen as shown.
- Slide the plastic opening tool to the right, along the mating edge, to pry off the back cover.
- Continue taking off the back cover along the left side of the camera as seen in the third picture.

Step 5



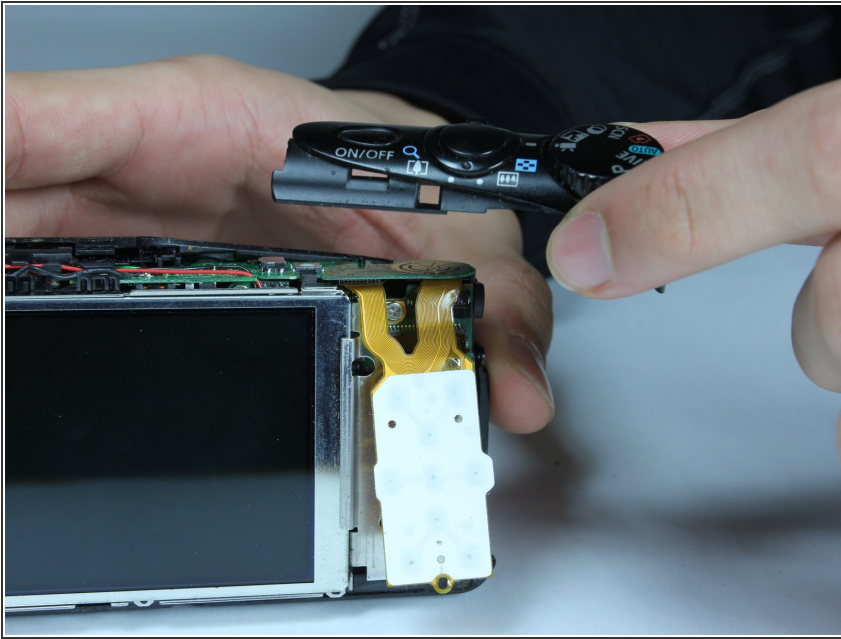
- Use the plastic opening tool to separate the top section of the back cover from the frame.
- Once there is enough separation between the back cover and the frame, remove the back cover for replacement.

Step 6 — Button Assembly



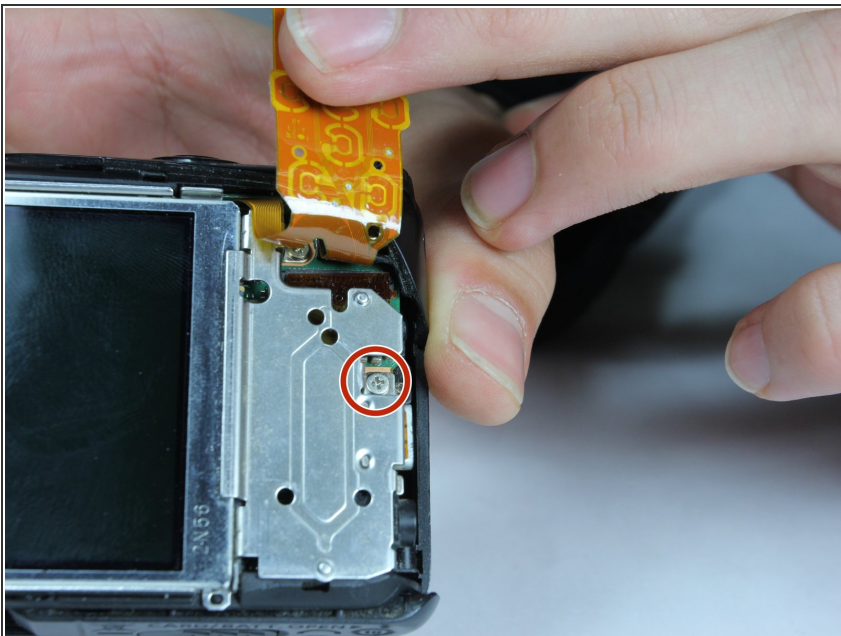
- Remove the internal 4.4mm screw with a Phillips 00 screwdriver.
- ⓘ Make sure you're removing the screw circled in red, not the screw crossed out in orange.

Step 7



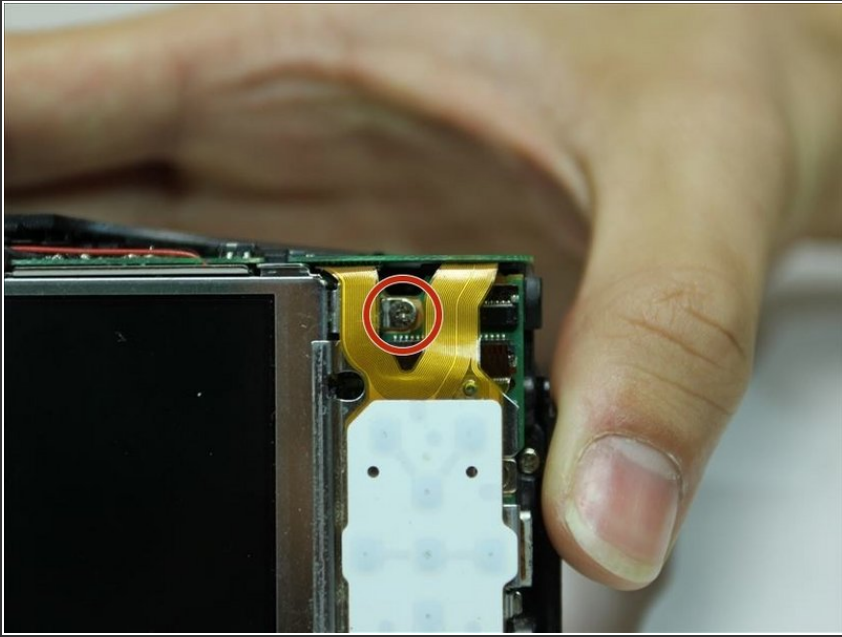
- Gently lift of the buttons for replacement. They should come off without excessive force.
- If the buttons do not lift off easily, you may have unscrewed the wrong screw. Revert to previous step.

Step 8 — LCD Screen



- Lift up the electrical ribbon shown to access the next screw.
- Remove the 3.9 mm screw with a Phillips #00 screwdriver.

Step 9



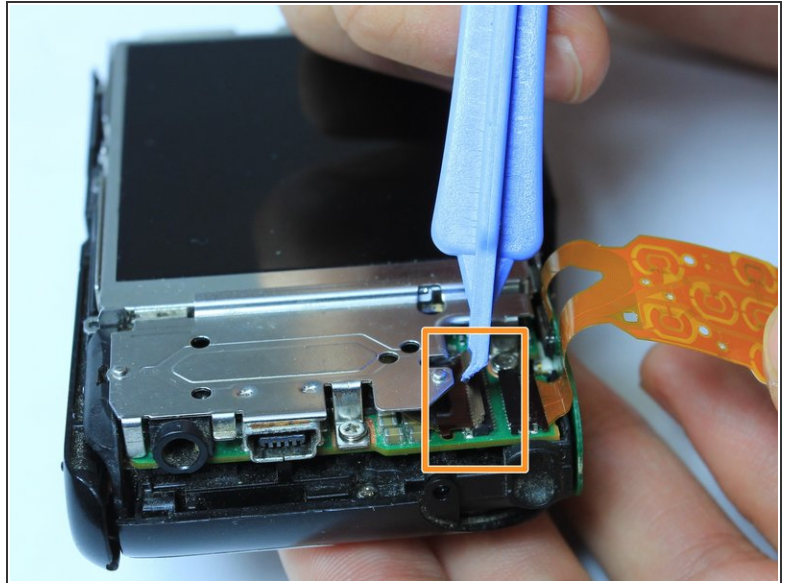
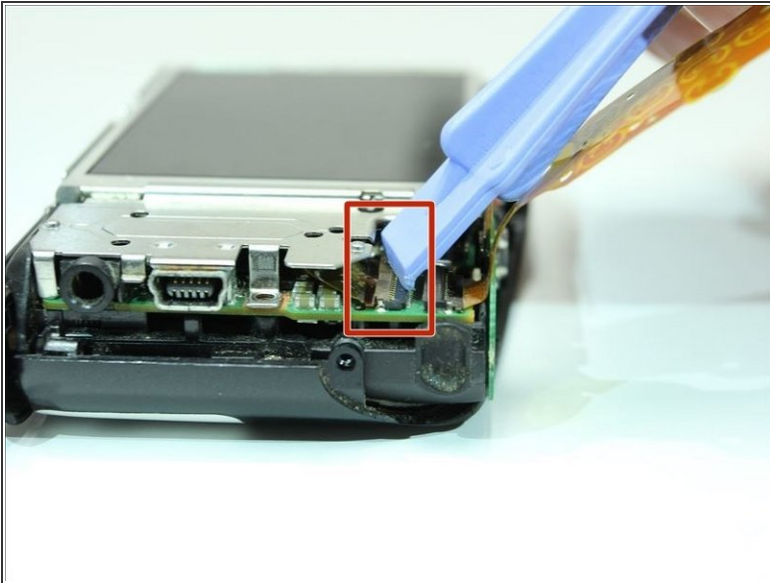
- Remove the 3.9 mm screw with a Phillips #00 screwdriver.

Step 10



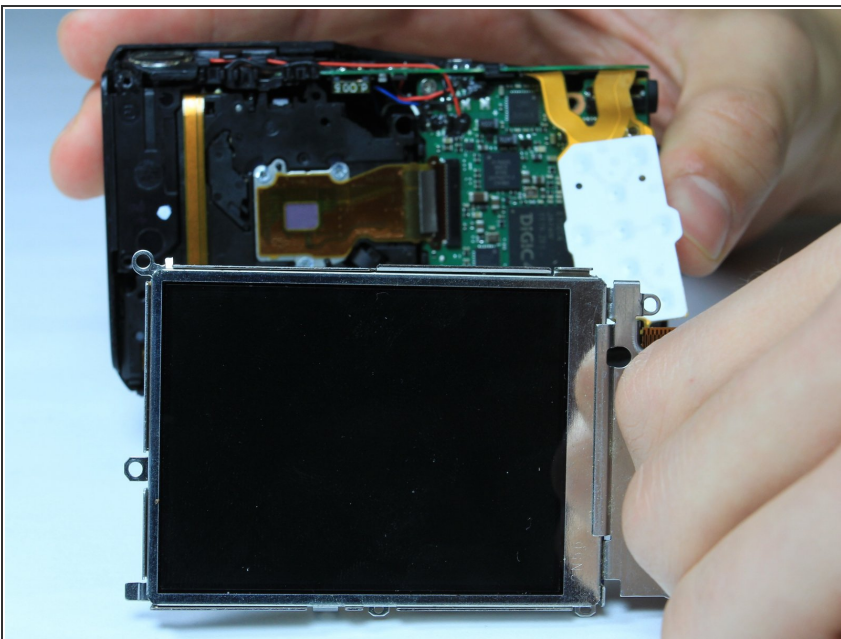
- Remove the two 3.9 mm screws shown with a Phillips #00 screwdriver.

Step 11



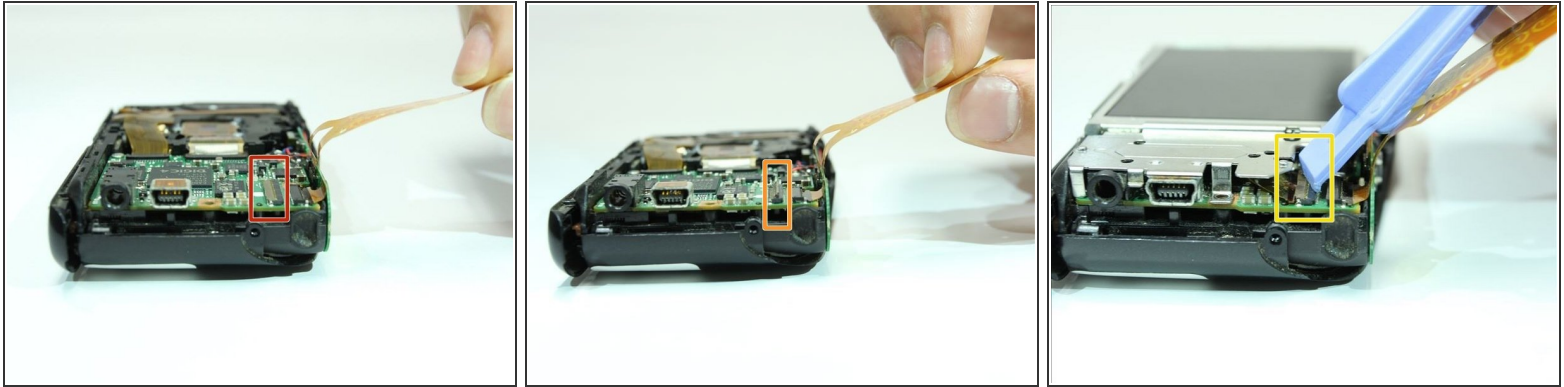
- There is an electrical flap that holds the LCD ribbon down. Note the flap is in closed position.
- Lift up the flap with a plastic opening tool.

Step 12



- Holding the outer frame of the LCD screen, gently lift the LCD screen for replacement.

Step 13



i This step is only for replacement. If you are not replacing the LCD screen, skip this step.

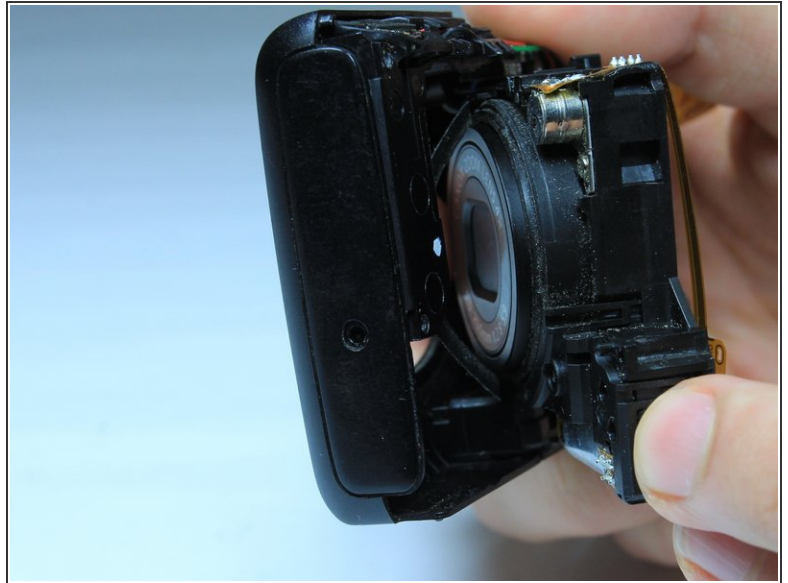
- Locate ribbon flap, enclosed in red. (picture 1)
- Using a plastic opening tool, lift up the ribbon flap to allow insertion of the LCD ribbon. (picture 2)
- Place the LCD screen on the camera and align the ribbon underneath the open ribbon flap. Close the ribbon flap onto the ribbon. (picture 3)

Step 14 — Lens Assembly



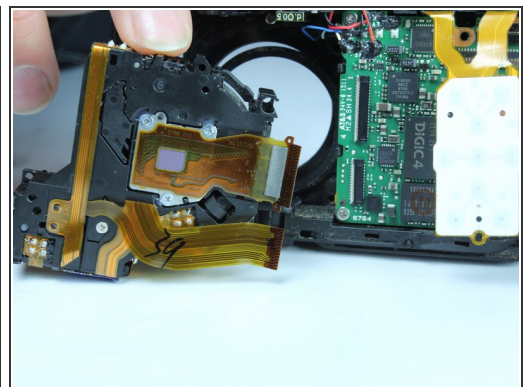
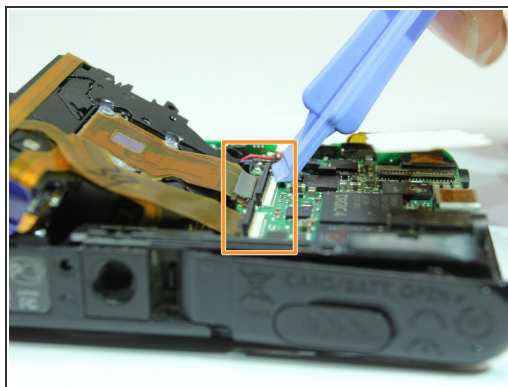
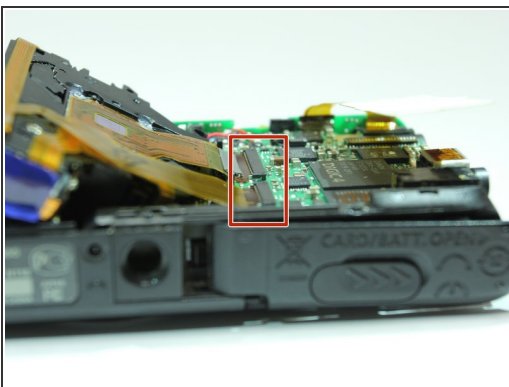
- Remove the two 5.3 mm screws circled in red with a Phillips #00 screwdriver.
- Remove the 4.4 mm screw circled in orange with a Phillips #00 screwdriver.

Step 15



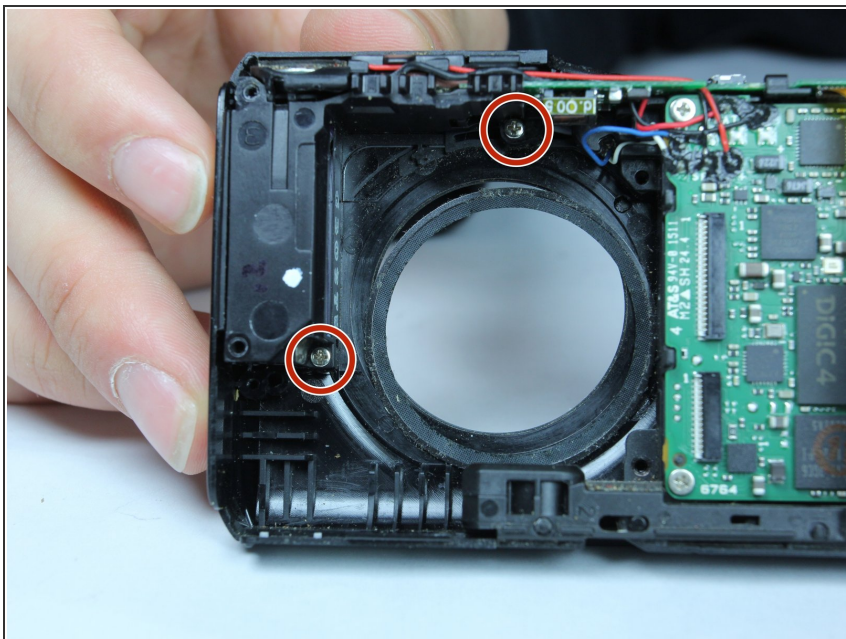
- Gently press the front of the lens to begin to remove it from the frame.
- Gently angle out the lens from the frame as seen in picture 2.
- ⓘ A thin circular ribbon should fall out from the front of the lens. Note its original location on the front cover for reassembly.

Step 16



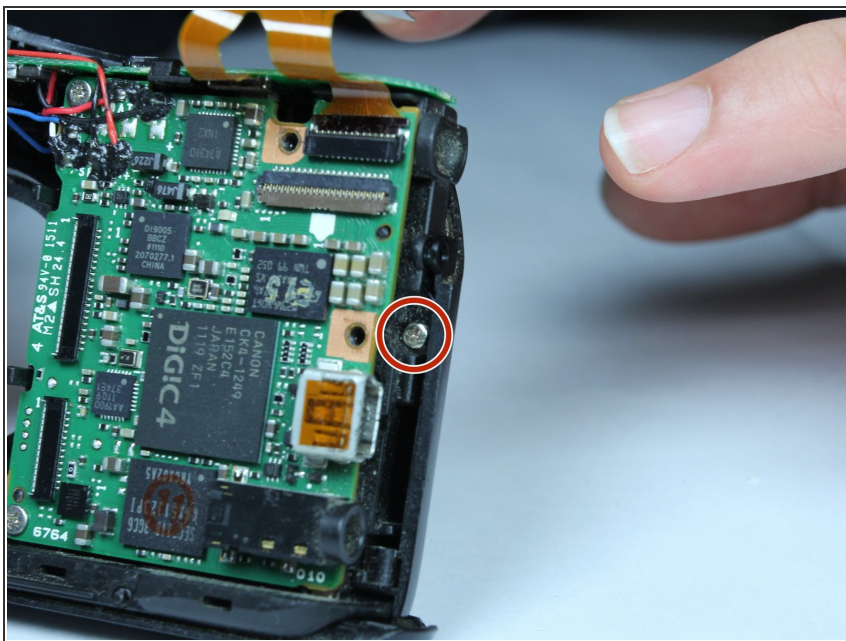
- Locate the two electrical ribbons that are attached to the main motherboard.
- Lift up the two black flaps on the motherboard that hold the electrical ribbons in place.
- Gently remove the lens for replacement.

Step 17 — Front Cover



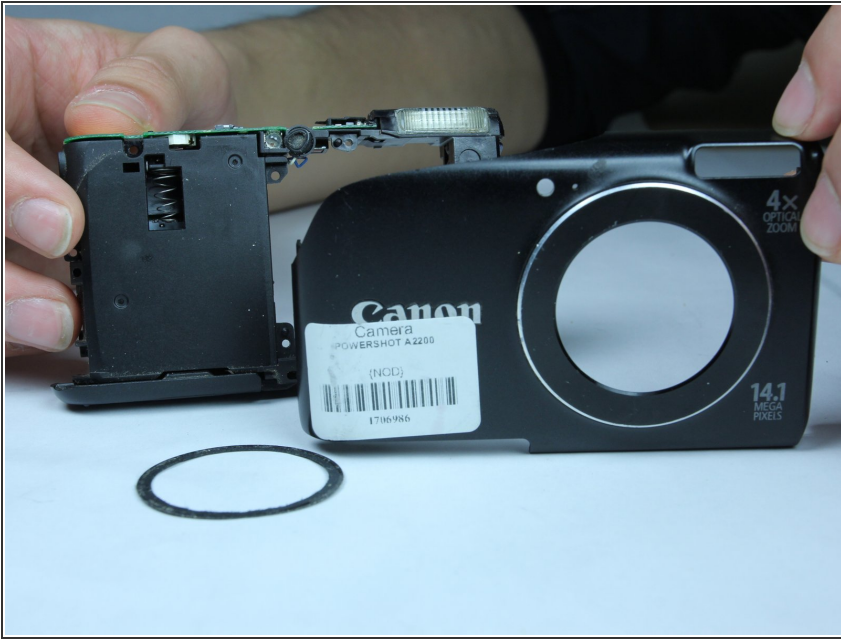
- Remove the two 4.4 mm screws shown with a Phillips #00 screwdriver.

Step 18



- Remove the 4.4 mm screw shown with a Phillips #00 screwdriver.

Step 19



- Gently remove the front cover for replacement.

To reassemble your device, follow these instructions in reverse order.