



Canon PowerShot A2500 Body Casing and Faceplate Replacement

How to remove the outside of the Camera and expose the inner workings of the device.

Written By: James Hickey



INTRODUCTION

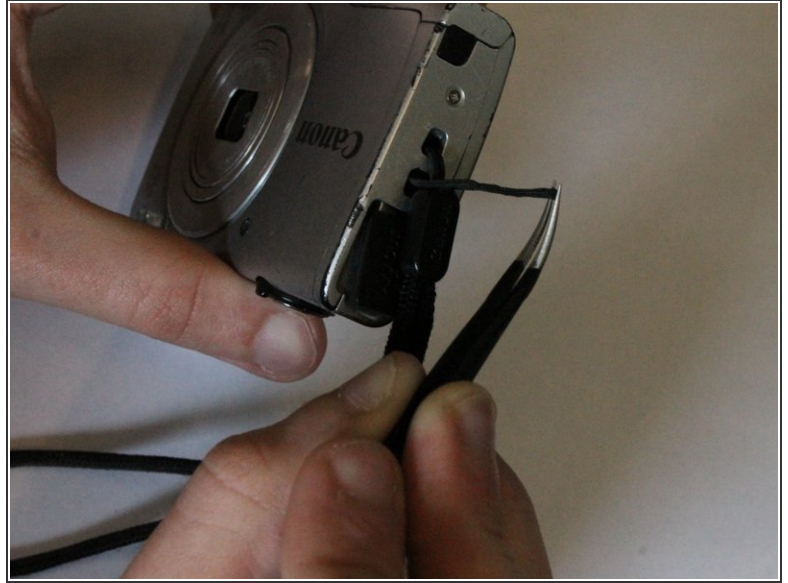
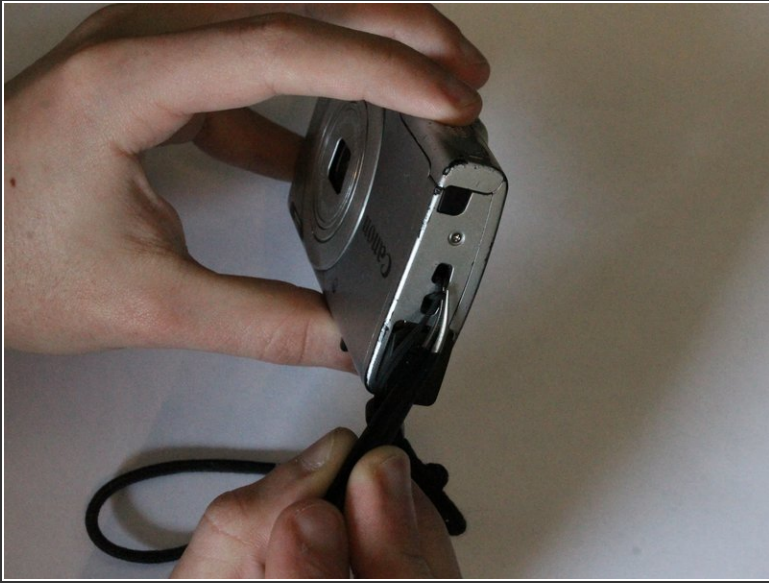
The Canon Powershot is made of a plastic casing that holds all of the internal parts inside. This is the prerequisite for any other repairs or replacements. Ensure to be careful when disassembling the camera.



TOOLS:

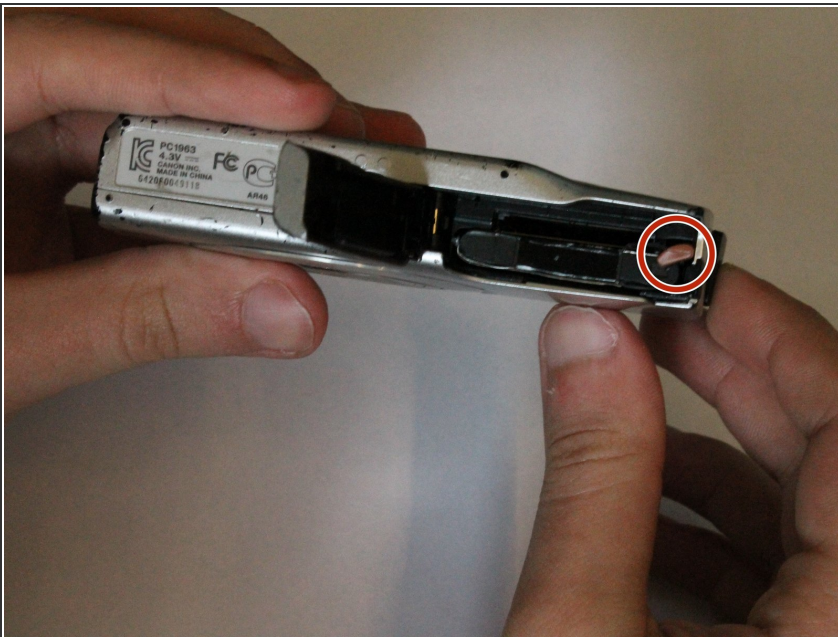
- [Phillips #00 Screwdriver](#) (1)
 - [Tweezers](#) (1)
 - [iFixit Opening Tools](#) (1)
-

Step 1 — Body Casing and Faceplate



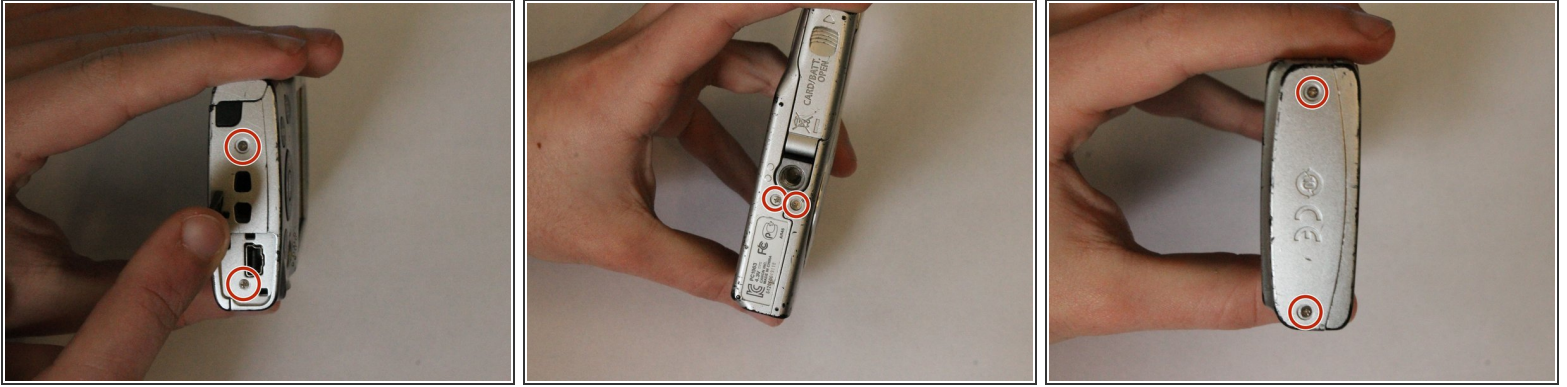
- Remove the knot holding the wrist lanyard onto the camera

Step 2



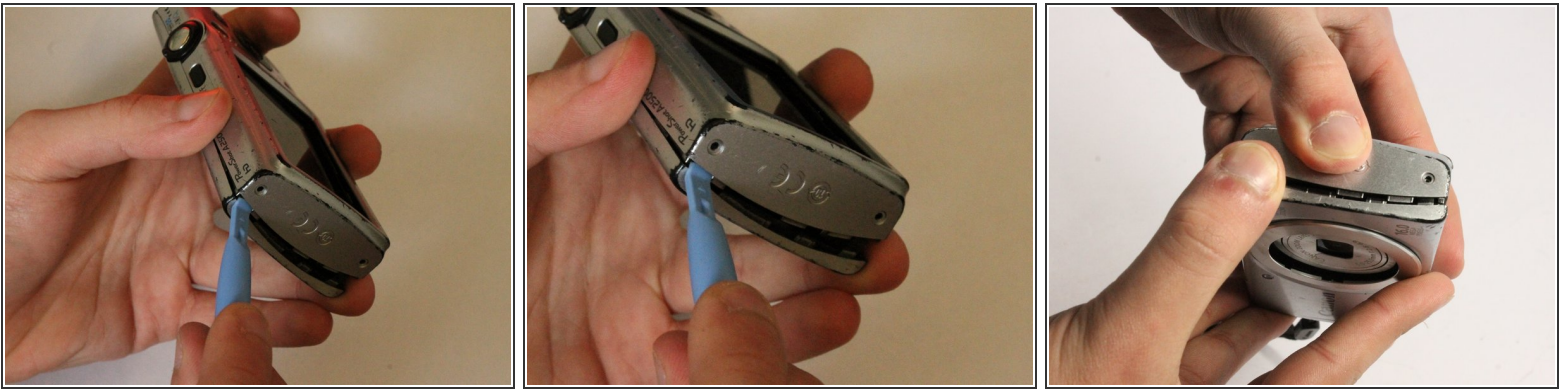
- Open the latch at the bottom corner of the device to reveal the battery and SD card housing.
- There is an orange latch holding the battery in place which must be pushed back in order to free the battery.
- Once the battery is removed push the SD card and this will activate a spring ejecting the card from the camera.

Step 3




- Remove the 6 Phillips #00 exterior screws from the camera. Two are located on the bottom and two are located on either side as shown. Notice that one of the screws is under the AV Out Digital flap on the side. All exterior screws should be 2.4mm in length

Step 4



- Pry apart the camera casing using the plastic opening tool tool provided. Once the casing has begun to separate pull the two sides apart with your hands.

 Be careful not to bend the plastic casing to much, as it will crack.

To reassemble your device, follow these instructions in reverse order.