



Canon PowerShot A4000 IS Battery Replacement

This guide demonstrates how to remove your Canon PowerShot A4000 camera battery.

Written By: Ansley Gardner

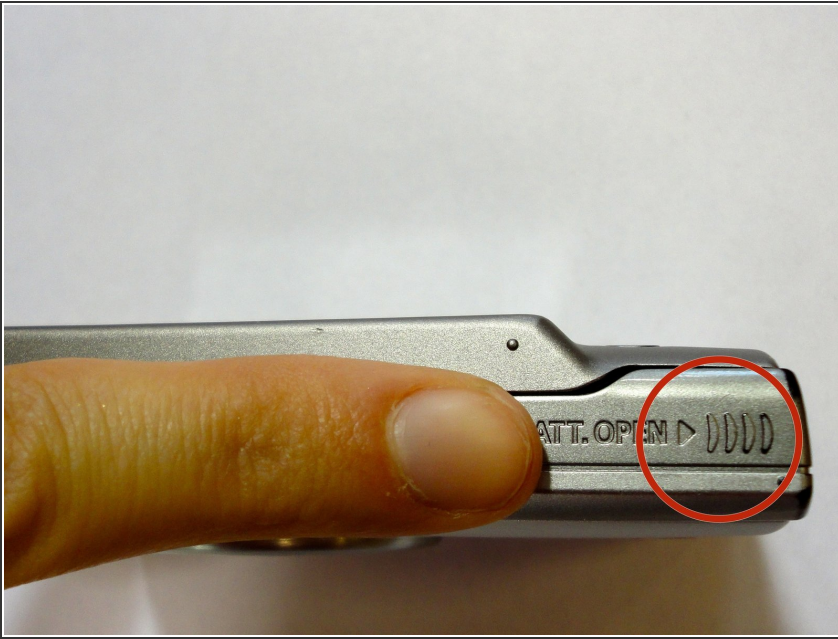


Step 1 — Opening the Battery Compartment



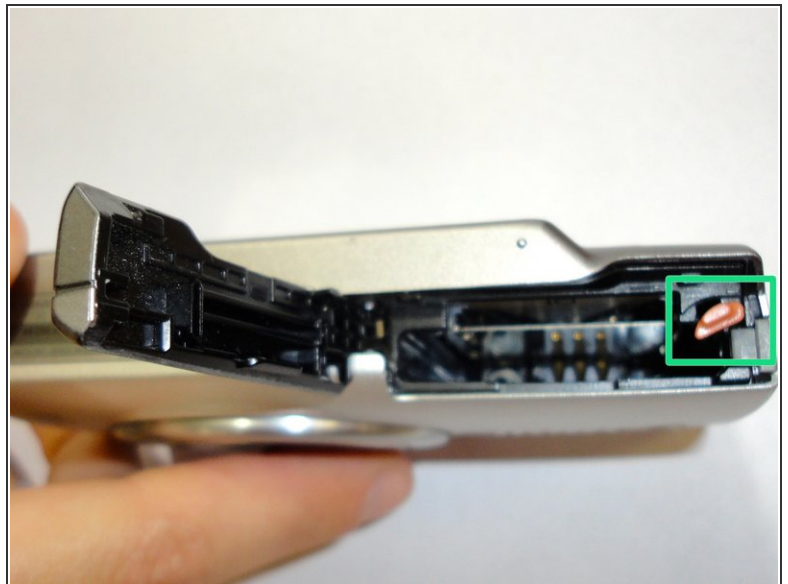
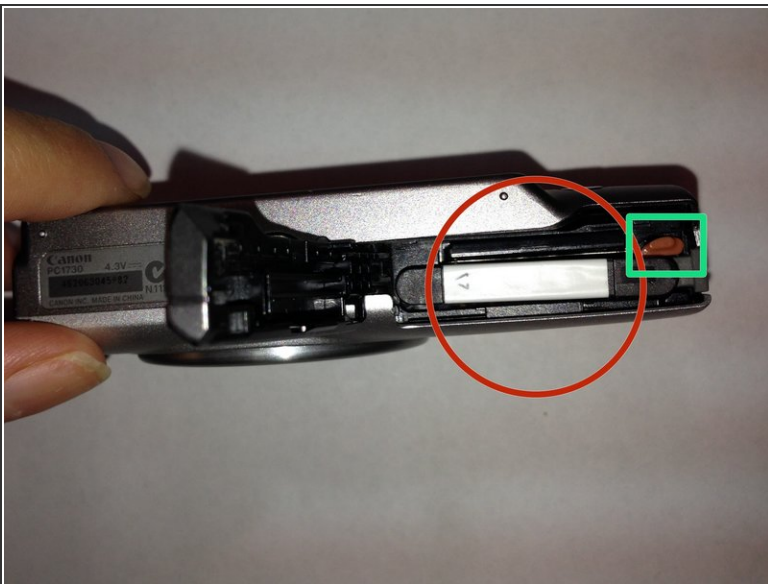
- The area highlighted in red is the door to the battery compartment. It is identified by the label CARD/BATT.OPEN and an arrow pointing outwards from the camera. This is showing the direction you are going to push to open the compartment.

Step 2



- Using your finger, apply pressure to the grooves at the top right corner of the camera that is highlighted in red. Slide the door to the battery compartment open.

Step 3 — Inside The Battery Compartment



- This is the open battery compartment. The battery has an arrow on it pointing in the direction the battery needs to be oriented in the camera.
- The green box is highlighting the switch used to remove the battery. Using your finger, press the red switch backwards, away from the lens, and the battery will be released.

To reassemble your device, follow these instructions in reverse order.