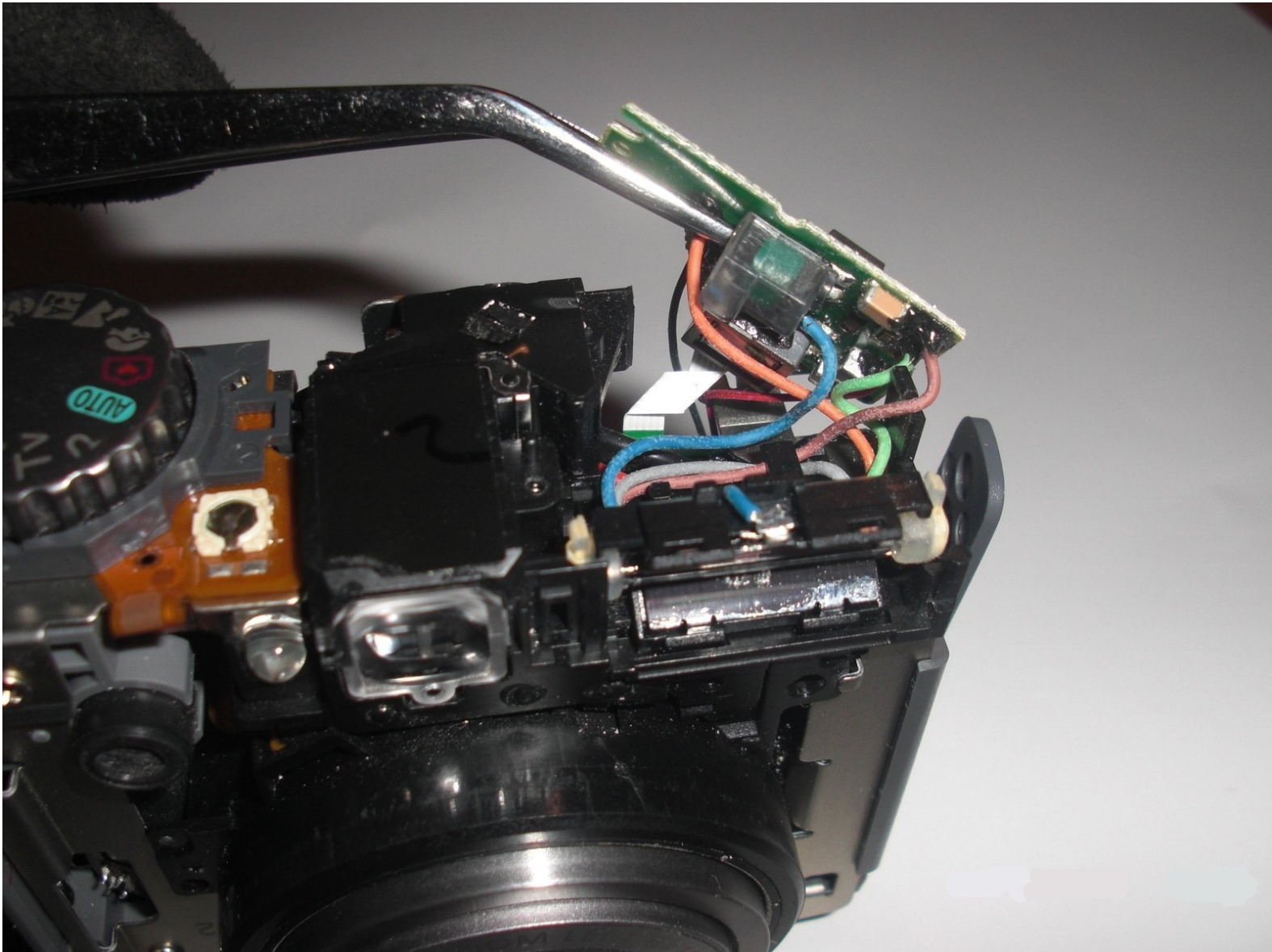




Canon PowerShot A590 IS Flash Assembly Replacement

This guide will instruct the user on how to replace the flash assembly in the Canon A590 IS.

Written By: Zach



INTRODUCTION

This guide will instruct you how to remove the front and back covers from the camera and disassemble the flash in order to replace or repair it.

TOOLS:

- [Phillips #00 Screwdriver](#) (1)
 - [Soldering Iron](#) (1)
-

Step 1 — Locate and Open Battery Hatch

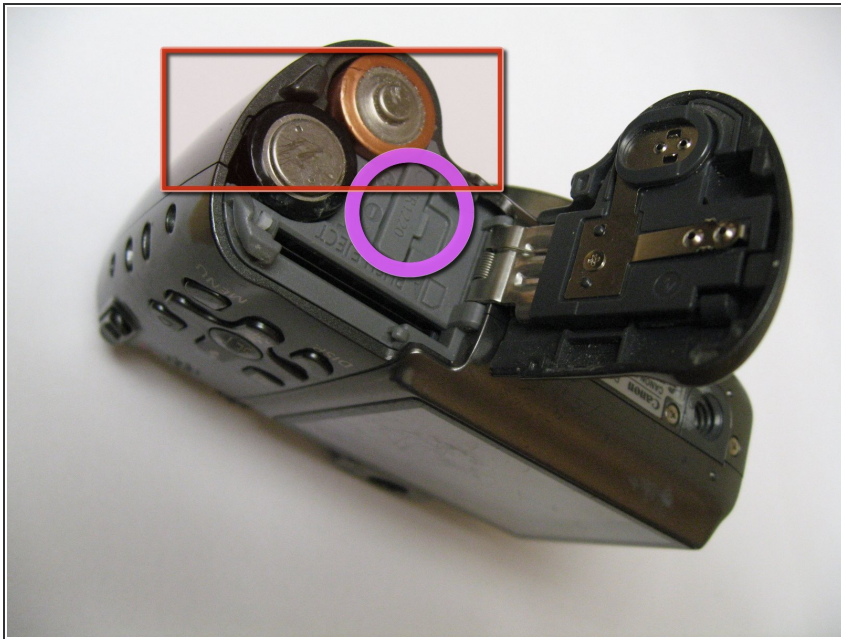


- The battery hatch is on the bottom of the camera.

⚠ CAUTION: Locate the switch to open the hatch and push gently toward the front of the camera. Too much force can break the hatch.

- While the switch is pushed forward, pull the cover away from the camera.

Step 2 — Locate and Remove Camera Batteries



- This camera requires AA batteries. To remove batteries, simply allow them to fall out of the camera.
- The clock battery cover is shown here in the purple circle. Use a fingernail to lift the battery out of the camera.

Step 3 — Replacing Camera Batteries



- When replacing the AA batteries, verify they are oriented correctly by following the (+) and (-) signs on the camera.

Step 4 — Remove Screw Near AV Port



- Remove the screw located under the rubber flap on the left side of the camera using a magnetic screwdriver.

Step 5 — Remove Side Screws



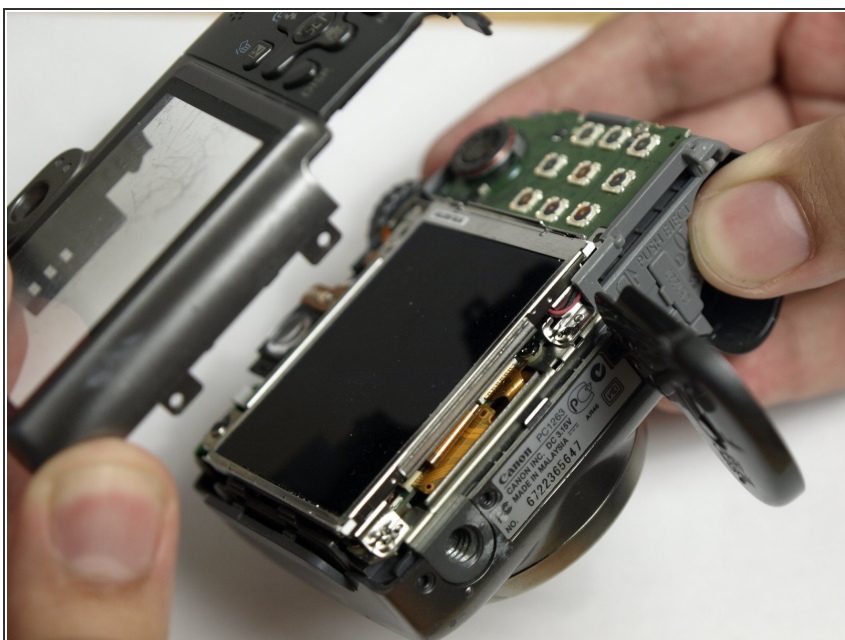
- Remove the two screws located on the other side of the camera using a magnetic screwdriver

Step 6 — Remove Bottom Screws



- Remove the three screws located at the bottom of the camera using a magnetic screwdriver.

Step 7 — Remove Back Cover



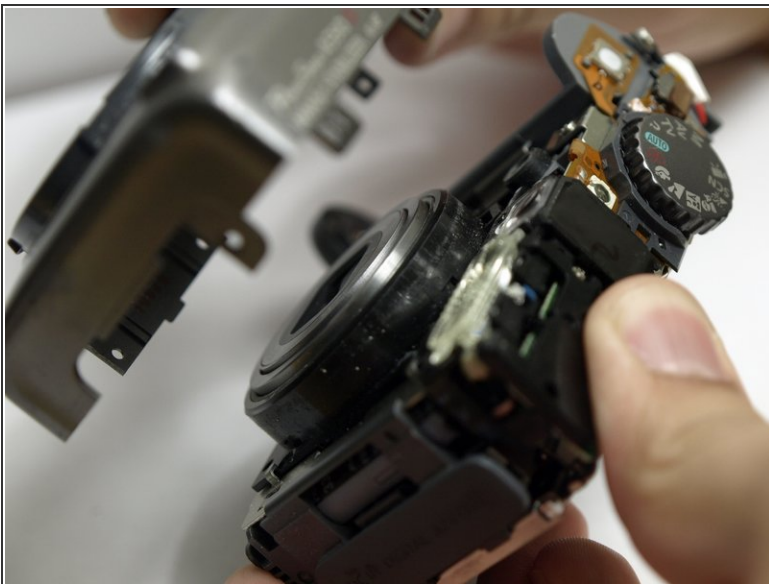
- Open the battery cover.
- Using the iPod tool, push up gently around all edges of the camera.

Step 8 — Remove Lens Cover



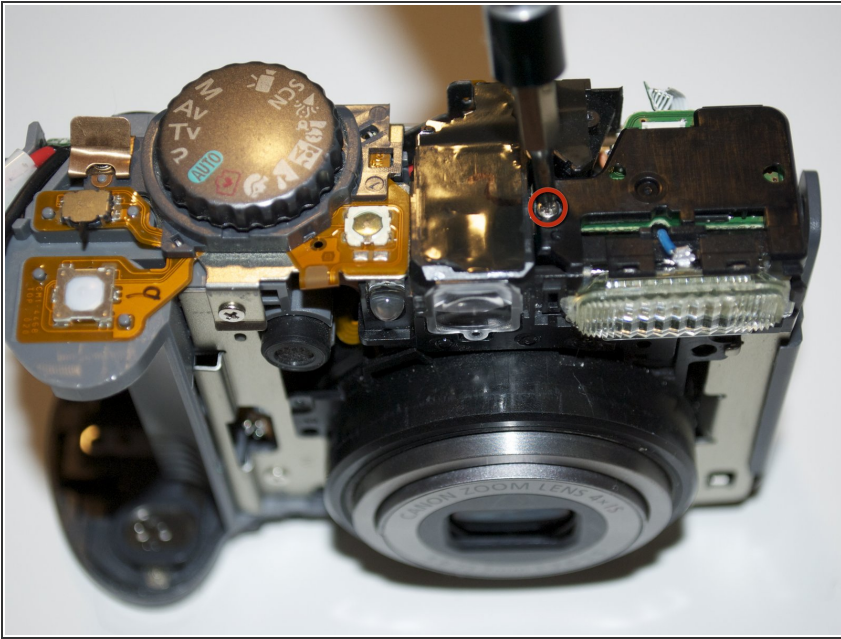
- Press and hold down the button shown in the blue circle.
- While pressing the button, rotate the lens cover in a counter-clockwise direction to remove it.

Step 9 — Remove Front Cover



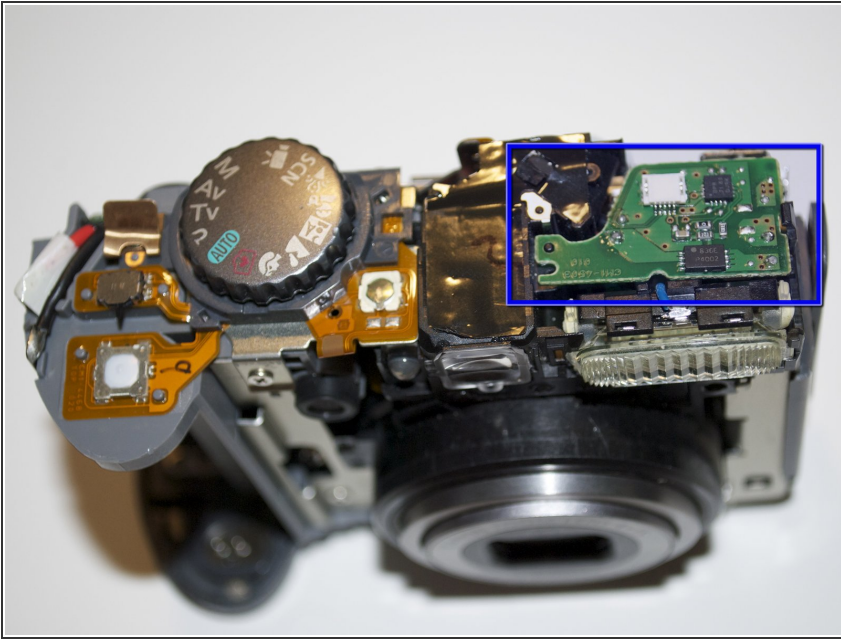
- Remove the front cover of the camera.
 - ⓘ This may require a bit of force.

Step 10 — Remove Plastic Covering



- Remove the one (1) screw from the top of the camera, on the left side of the flash (looking from the front) using a Phillips #00 screwdriver.
- Lift the black plastic covering off the circuit board.

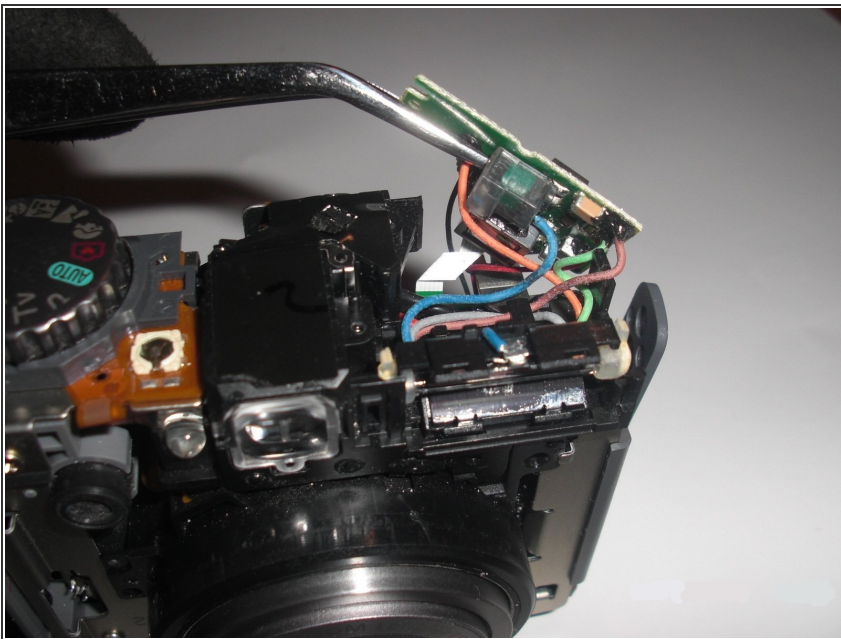
Step 11 — Remove Green Circuit Board



- Remove the green circuit board from the top. Looking from the front of the camera, first lift the left side up above the black peg. The board should then slide out to the left.

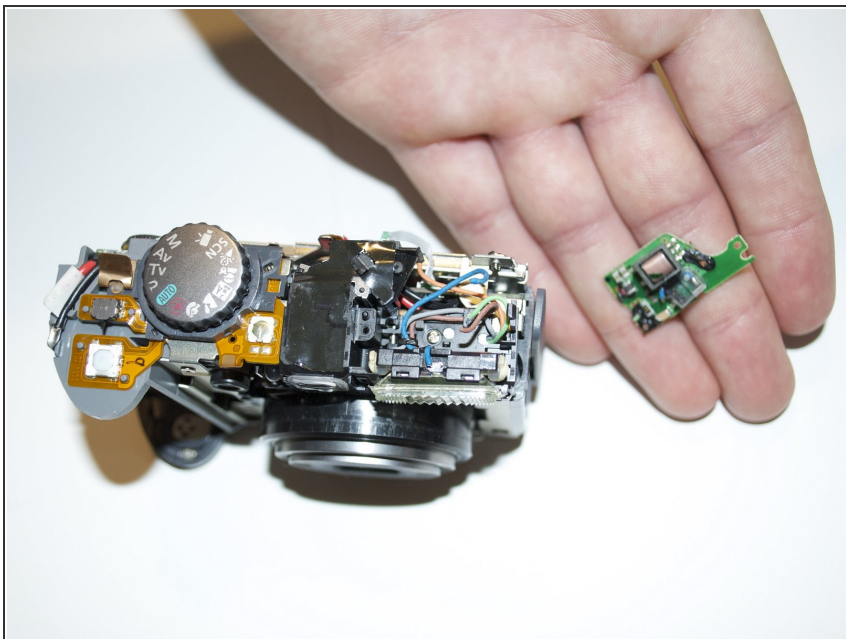
ⓘ The clear flash lens may fall out. Do not worry this will not affect the camera and can easily be placed back in its spot.

Step 12 — Unsolder Circuit Board Cables



- Unsolder the cables under the circuit board.

Step 13



- The flash logic board can now be removed from the camera and replaced.

To reassemble your device, follow these instructions in reverse order.