



# Canon PowerShot A610 Broken Control Buttons Repair

This is the easiest way to fix a button that is recessed within the back casing of the camera.

Written By: Matthew Ramirez



---

## INTRODUCTION

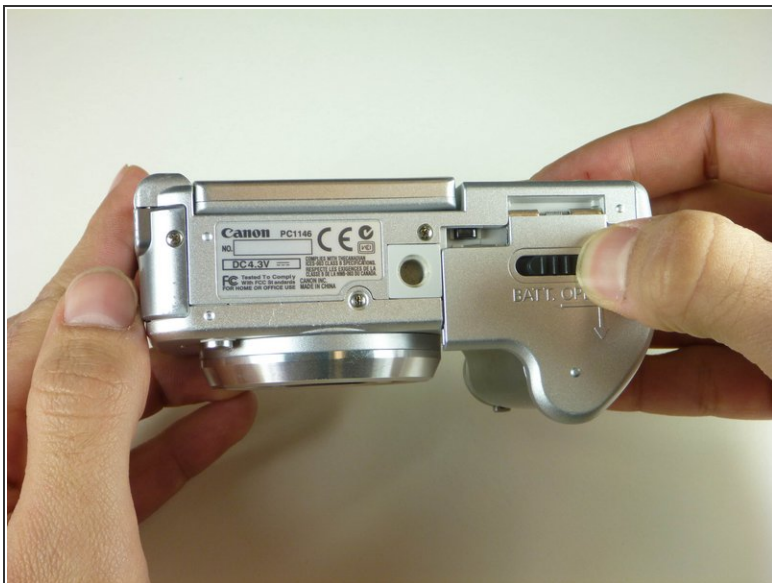
This guide demonstrates how to take off the camera casing and easily pop the broken button back into place.



### TOOLS:

- [Phillips #00 Screwdriver](#) (1)
-

## Step 1 — Batteries



- Unlock the battery cover, while swinging the cover outward to open it.

## Step 2



- Turn the camera over and allow the batteries to fall out.
- Close the battery cover.



## Step 3 — Camera Housing



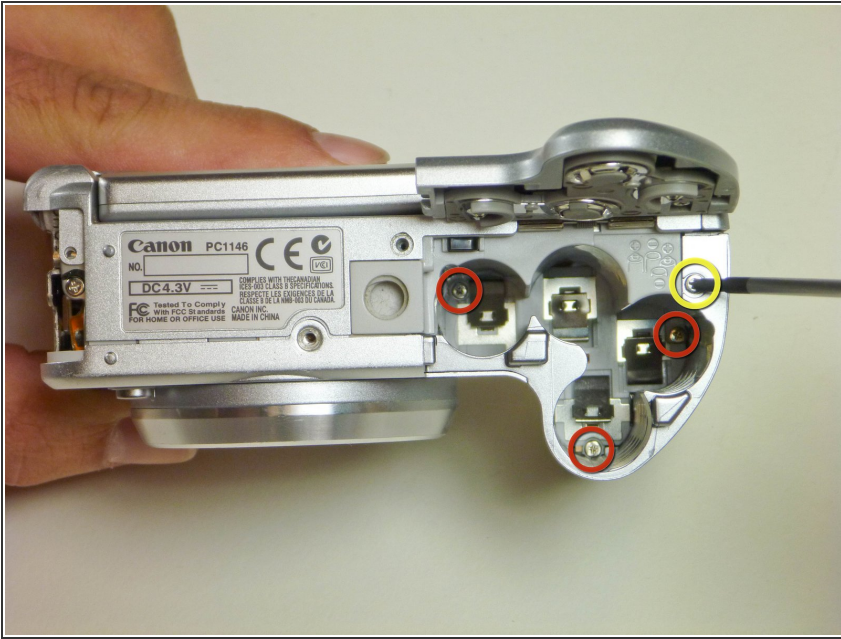
- Remove the three 3 mm screws that attach the side panel to the body of the camera.
- Using your fingernails, pull the side panel outward to remove it.
- Remove the two remaining 2 mm screws that attach to the frame of the camera.

## Step 4



- Remove the 3 mm screw that sits at the bottom of the camera, near the front side.
- Remove the 4 mm screw that sits at the bottom of the camera, near the back side.

## Step 5



- Open the battery cover.
- Remove the 5 mm screw that sits on the top of the battery slot.
- Remove the three 6 mm screws that sit at the bottom of the battery slot.
- Close the battery cover.

## Step 6




- Open the digital A/V DC terminal cover.
  - Remove the three 4 mm screws.
  - Detach the digital A/V DC terminal.
- ✦ When you reassemble the camera, leave the topmost screw out until after you put the top casing back.



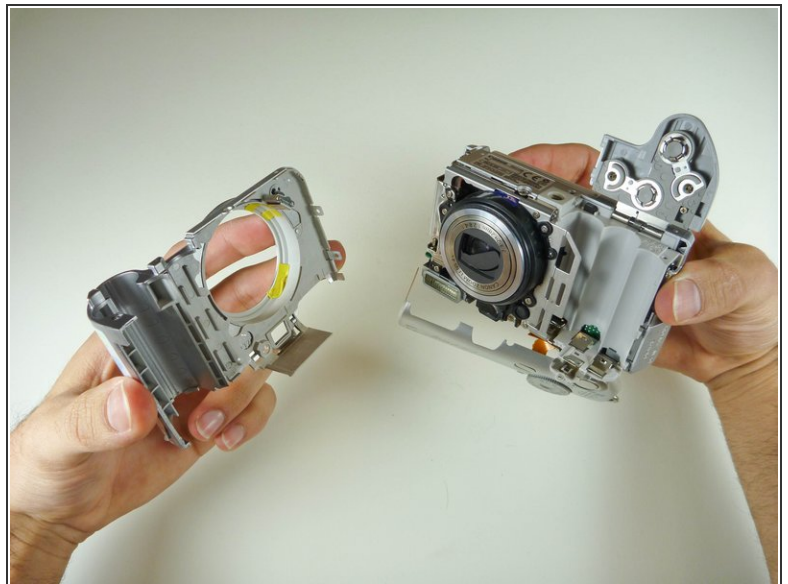
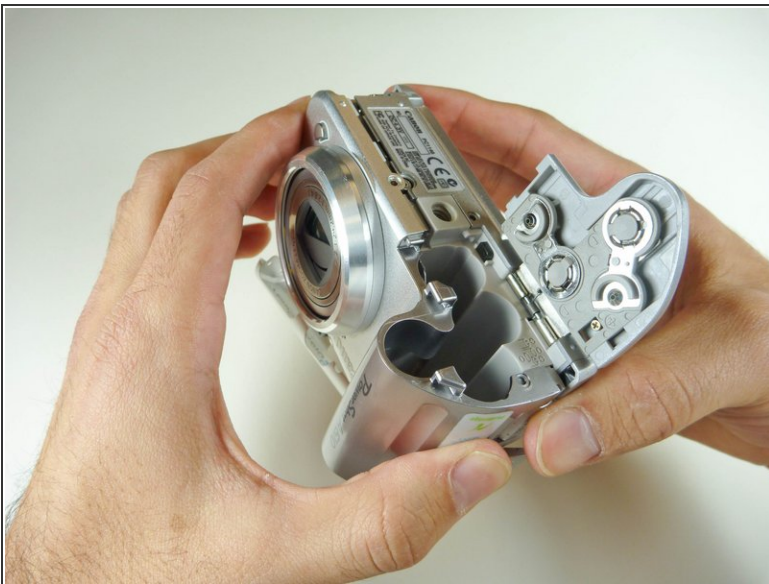
## Step 7




- Grip the sides of the top cover and gently lift the cover until it detaches from the camera.

 Do not completely remove the top cover; an orange ribbon cable still connects it to the camera.

## Step 8

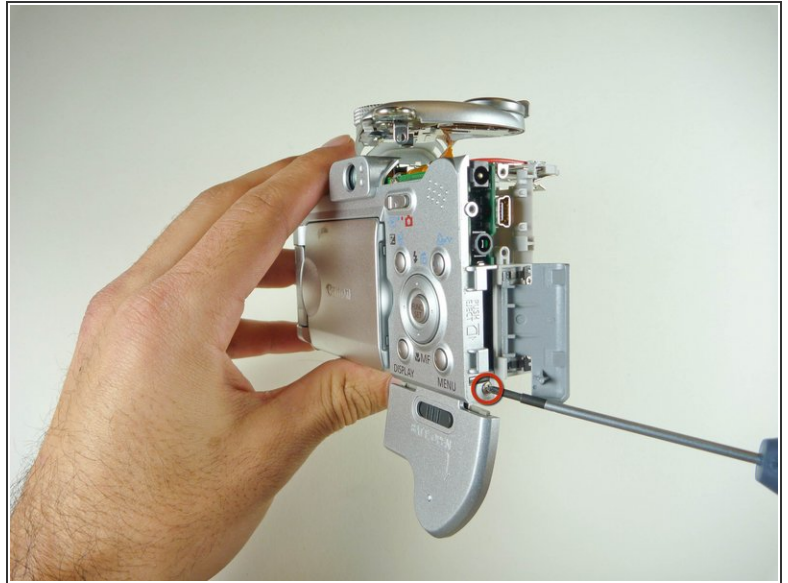


- Open the battery cover.
- With the camera upside down, pull the front case's side that is closest to you, in an outward movement.

 Apply some force, but pull it gently to prevent damage.

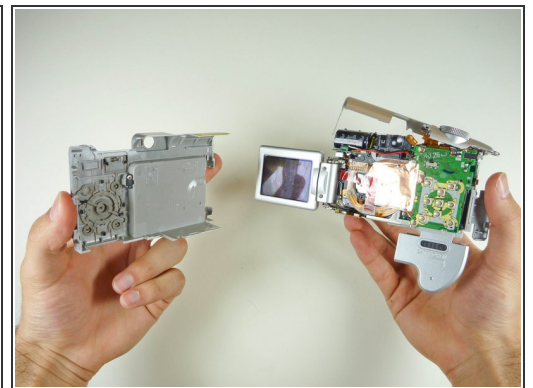
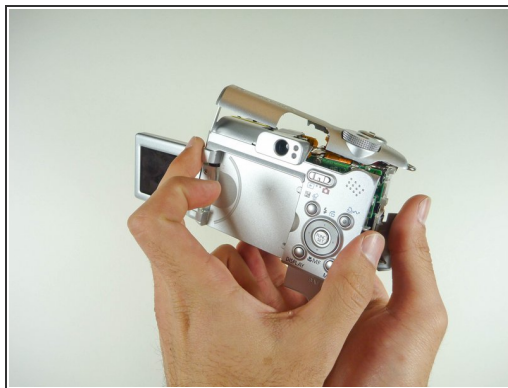
This document was generated on 2019-10-07 03:09:42 AM (MST).

## Step 9



- Open the memory card slot cover.
- Remove the 3 mm screw that sits near the bottom of the case.

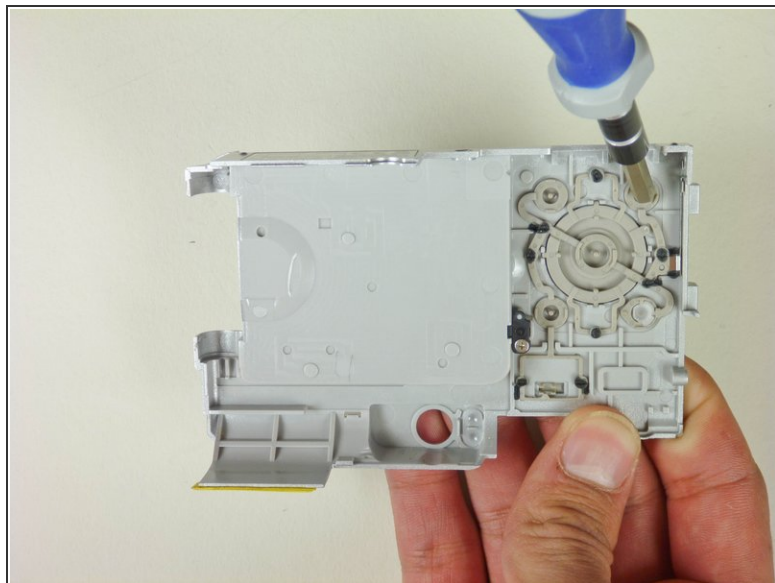
## Step 10



- Flip the LCD screen all the way open.
- Grip both sides of the back case's top and gently pull it, in an outward movement, until the case detaches.



## Step 11 — Canon PowerShot A610 Broken Control Buttons Repair



- Remove the back casing.
- Flip the casing over and push on the back of the broken button with either your finger or a blunt object until it realigns into its slot.

To reassemble your device, follow these instructions in reverse order.