



Canon PowerShot A620 Batteries Replacement

Written By: Jaime Abraham

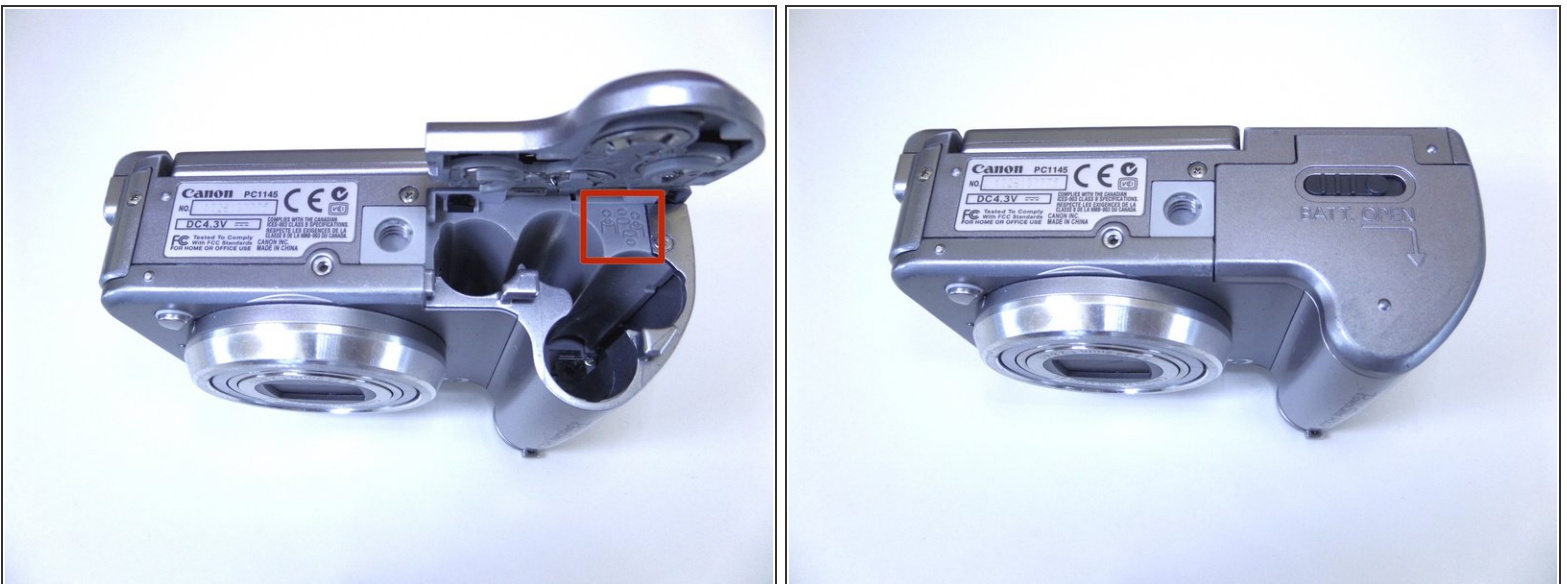


Step 1 — Open Battery Door



- Slide the tab on the battery door while pushing the battery door away from you. The battery door should pop open.

Step 2 — Insert Batteries



- Insert AA batteries according to the diagram printed on the camera.
- Close the battery door.

To reassemble your device, follow these instructions in reverse order.