



# Canon PowerShot A620 Camera Housing Replacement

Removal of the Canon A620 front, back and side cover.

Written By: Jaime Abraham





## TOOLS:

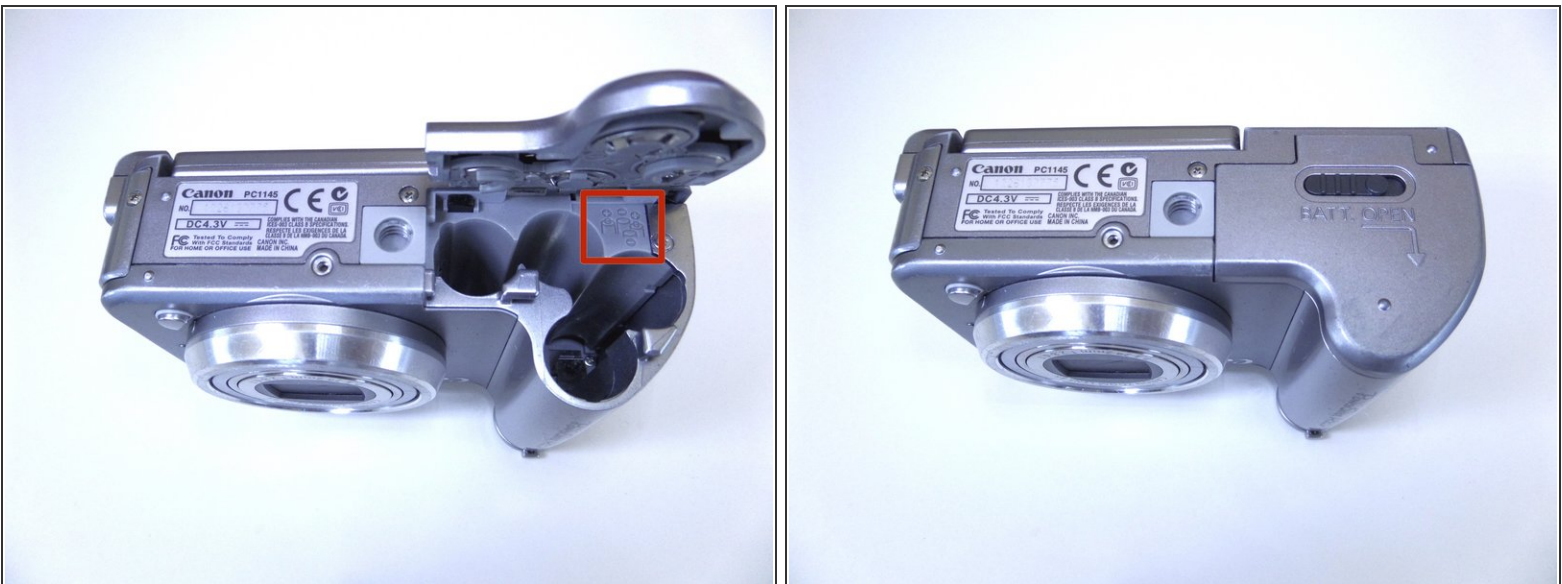
- [Phillips #00 Screwdriver](#) (1)
-

## Step 1 — Open Battery Door



- Slide the tab on the battery door while pushing the battery door away from you. The battery door should pop open.

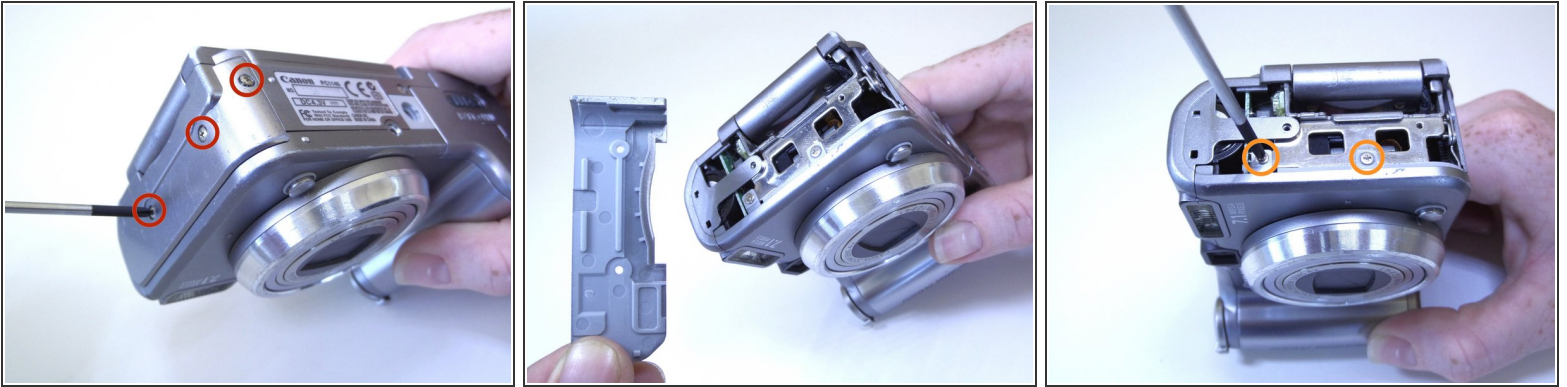
## Step 2 — Insert Batteries



- Insert AA batteries according to the diagram printed on the camera.
- Close the battery door.



### Step 3 — Side Panel



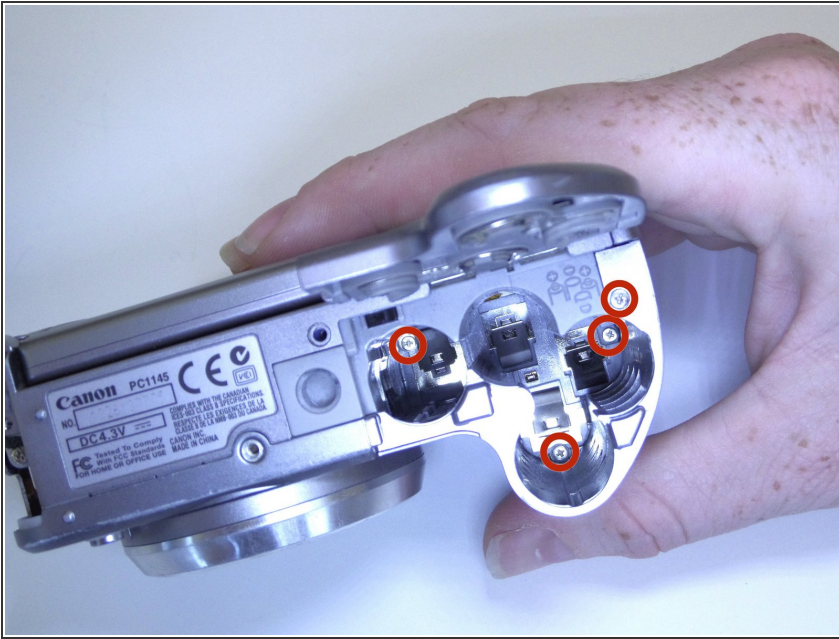
- Unscrew the three Phillips #00 1.6x3mm screws on the side.
- Lift loose panel from the case.
- Unscrew the two Phillips #00 1.6x3mm screws that were previously hidden beneath the panel.

### Step 4 — Bottom Panel



- Unscrew the two Phillips #00 1.6x3mm screws on the bottom panel.

## Step 5 — Battery Compartment



- Open the battery door.
- Unscrew the four Phillips #00 1.6x3mm screws in the battery compartment.

## Step 6 — Terminal Cover



- Lift the terminal cover on the side of the camera.
- Unscrew the three Phillips #00 1.6x3mm screws beneath the terminal cover.

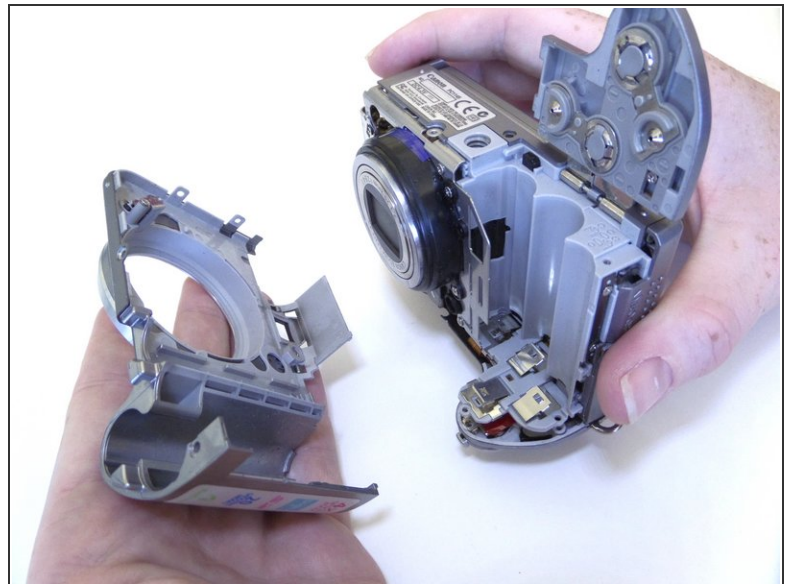
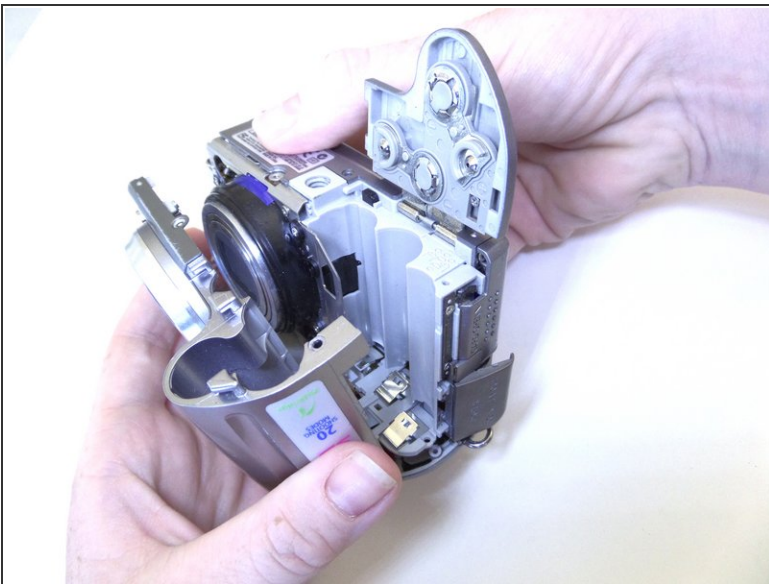


## Step 7 — Top Panel



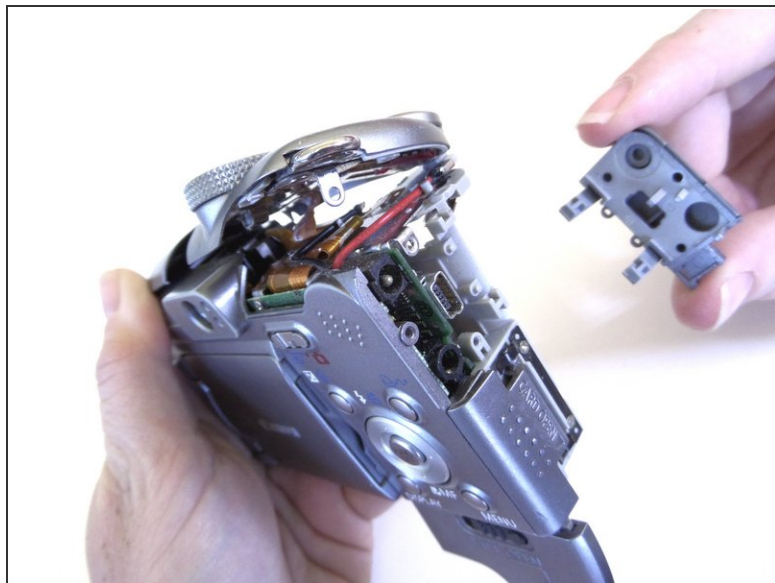
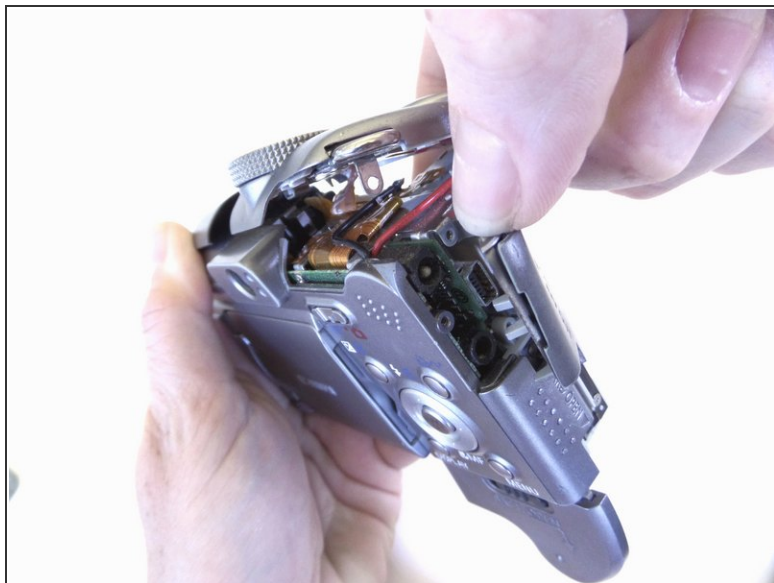
- Gently pull the top panel to separate it from the case.
- ⓘ Although the top panel will now be free from the rest of the case, it will still be attached to the camera by a ribbon cable.

## Step 8 — Front Panel



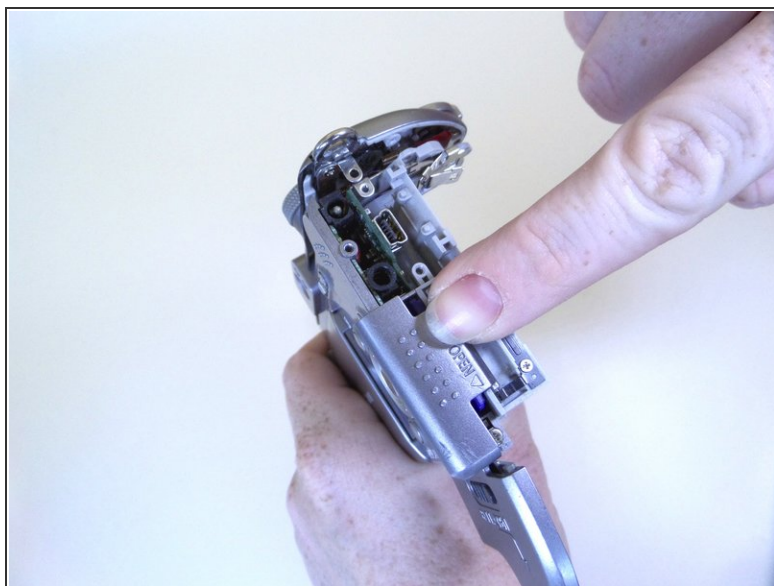
- Gently pull the front panel to separate it from the camera.
- ⓘ The battery terminals are easy to access from this step.

## Step 9 — Terminal Cover



- Gently pull the terminal cover to separate it from the camera.

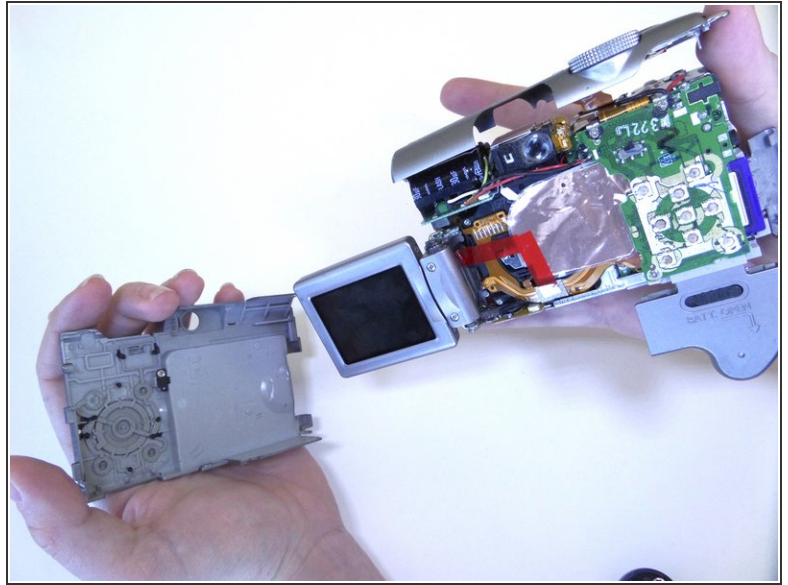
## Step 10 — Memory Card Cover



- Slide the memory card cover down.
- Unscrew the Phillips #00 1.6x3mm screw beneath the memory card cover.



## Step 11 — Back Panel



- Gently pull the back panel to separate it from the camera.

To reassemble your device, follow these instructions in reverse order.