



# Canon PowerShot A630 Batteries Replacement

This guide will show you how to replace the batteries in your camera.

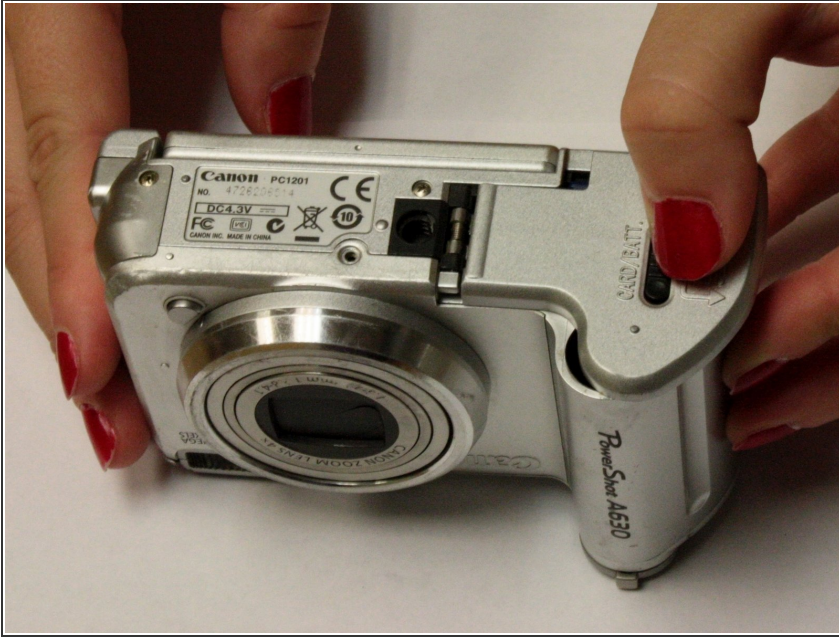
Written By: Alicia Burns



## INTRODUCTION

If your camera will not turn on you may need to replace the batteries. Batteries should also be removed before any dis-assembly is performed. This guide will show you how to replace the batteries in your camera.

## Step 1 — Open Battery Door



- Slide the tab on the battery door while pushing the battery door out from the camera.

## Step 2 — Insert Batteries



- Remove current batteries.
- Replace with 4 new AA batteries.
- Shut the battery door and slide back toward the camera to lock into place.

To reassemble your device, follow these instructions in reverse order.