



# Canon PowerShot A630 Front Panel Replacement

You may want to replace the front panel of your camera if it is damaged. Removal of the front panel is also a prerequisite step for replacement of other internal camera components. This guide will help you replace the front panel of your camera

Written By: Kelly Duggan









## TOOLS:

- [Phillips #00 Screwdriver](#) (1)
-



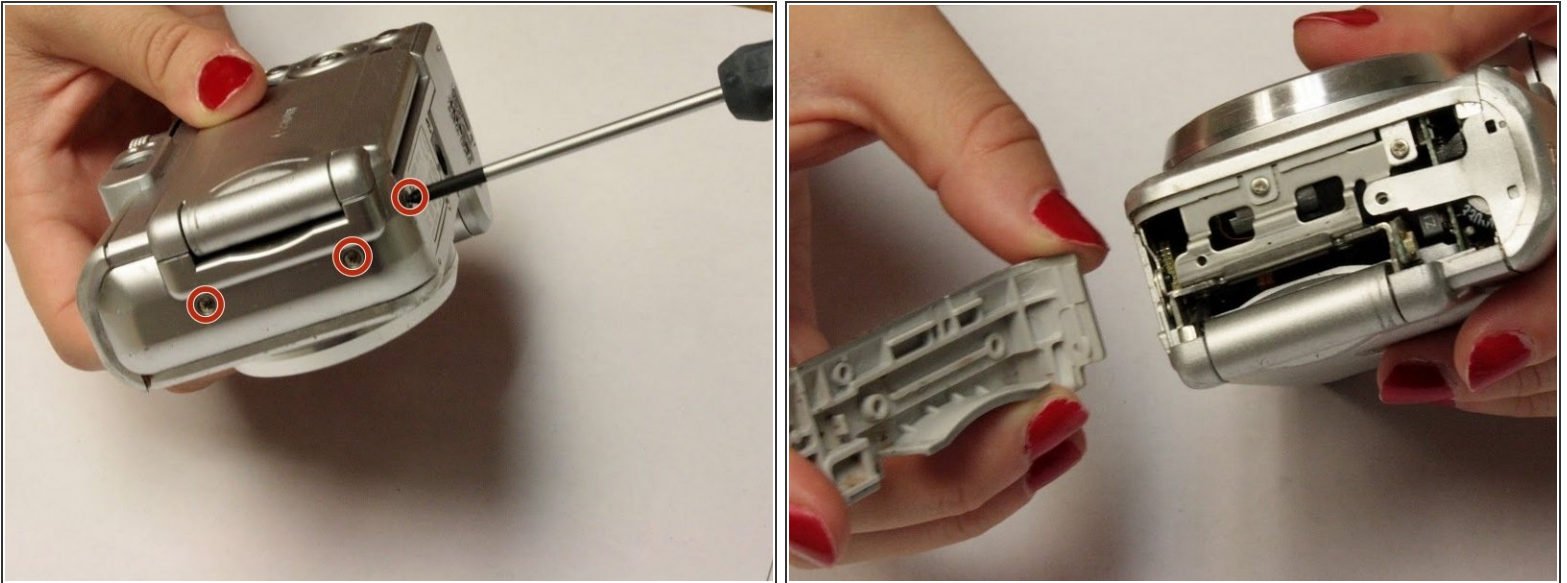
## Step 1 — Front Panel



- Open the battery door by sliding the tab on the battery door while pushing the battery door away from the camera.
- Remove batteries.



## Step 2



- Remove the three indicated .2mm screws using a Phillips #00 screwdriver.
- Gently pull off side-panel to remove it.

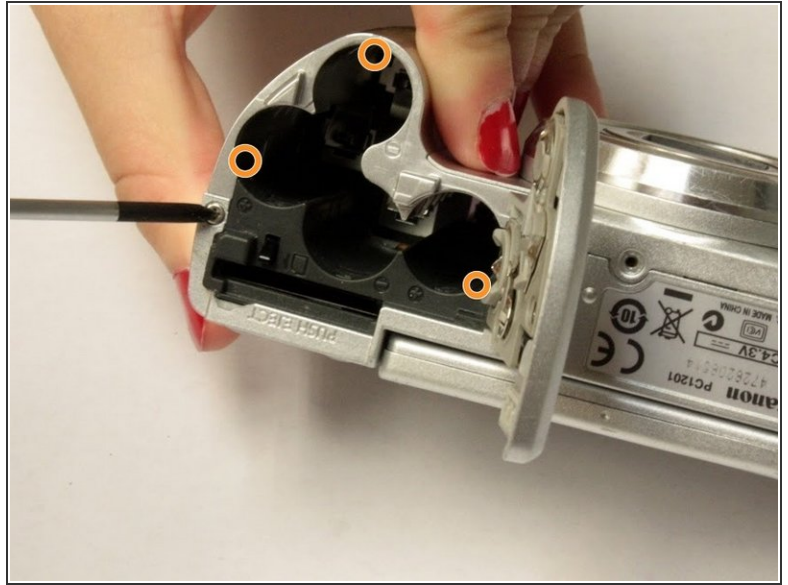
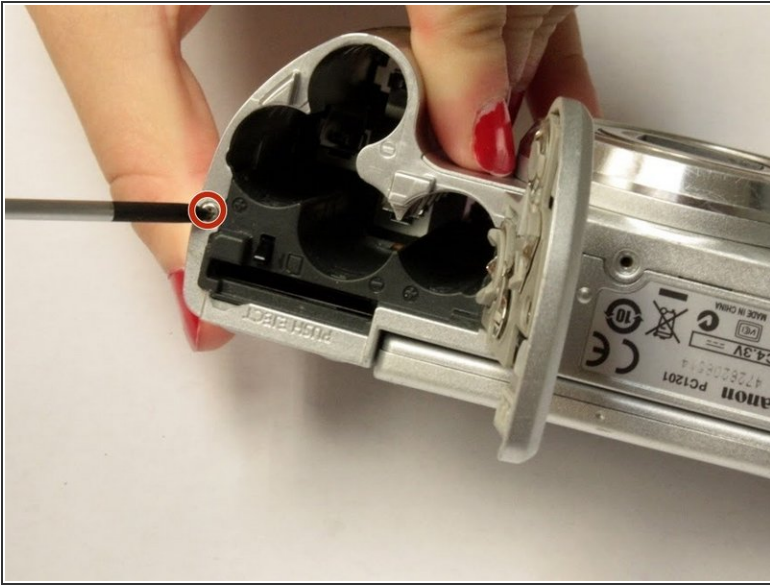
## Step 3



- Remove the two indicated .2mm screws using a Phillips #00 screwdriver.



## Step 4



- Remove the indicated .2mm screw using a Phillips #00 screwdriver.
- Remove the three .2mm screws located on the internal side of the top panel within the battery chamber using a Phillips #00 screwdriver.

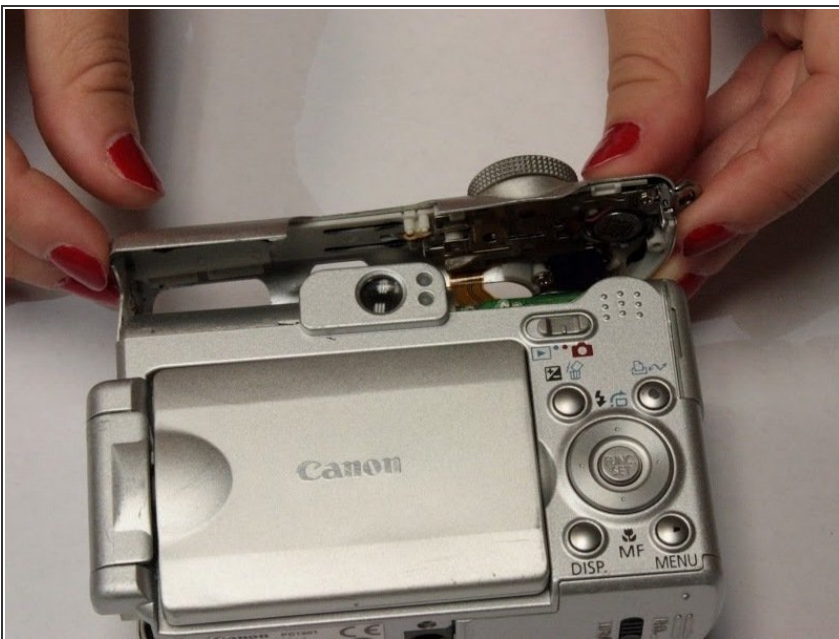


## Step 5



- Open 'DIGITAL A/V OUT' door on camera.
- Remove the two indicated .2mm screws using a Phillips #00 screwdriver.

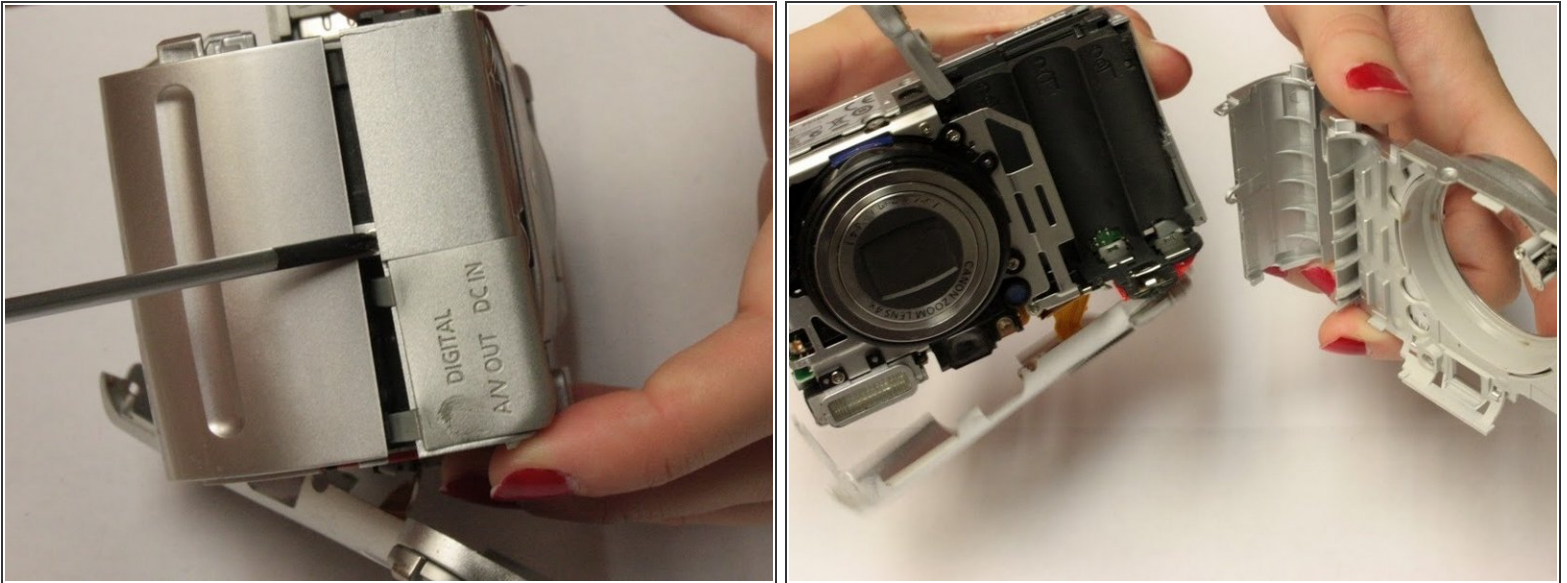
## Step 6



- Grip the sides of the top panel and gently pull to separate the top panel from the camera body.
- ⓘ The top panel will not completely detach.



## Step 7



- Gently pull the front and back panels apart, and use a Phillips #00 screwdriver to remove the screw connecting the panels.
- Gripping the top and bottom, gently pull the front panel away from the camera body to remove it.

To reassemble your device, follow these instructions in reverse order.