



Canon PowerShot A630 Shooting Mode Dial Replacement

Replace the Shooting Mode Dial on your Canon PowerShot A630.

Written By: Alicia Burns



INTRODUCTION

Use this guide to replace the shooting mode dial on your Canon PowerShot A630 camera.



TOOLS:

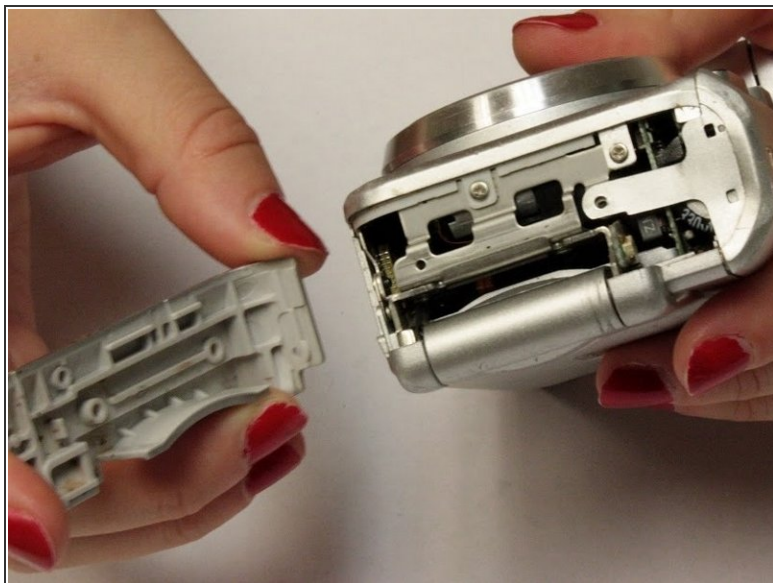
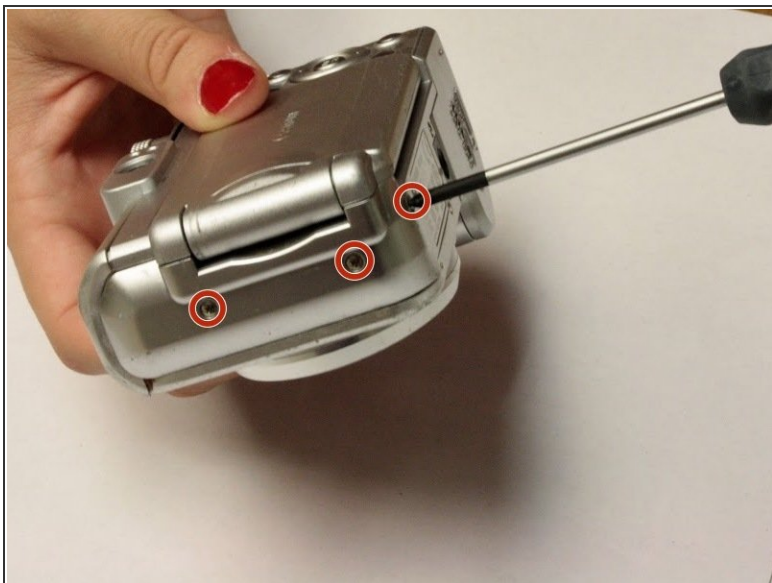
- [Phillips #00 Screwdriver](#) (1)
 - [iFixit Opening Tools](#) (1)
-

Step 1 — Front Panel



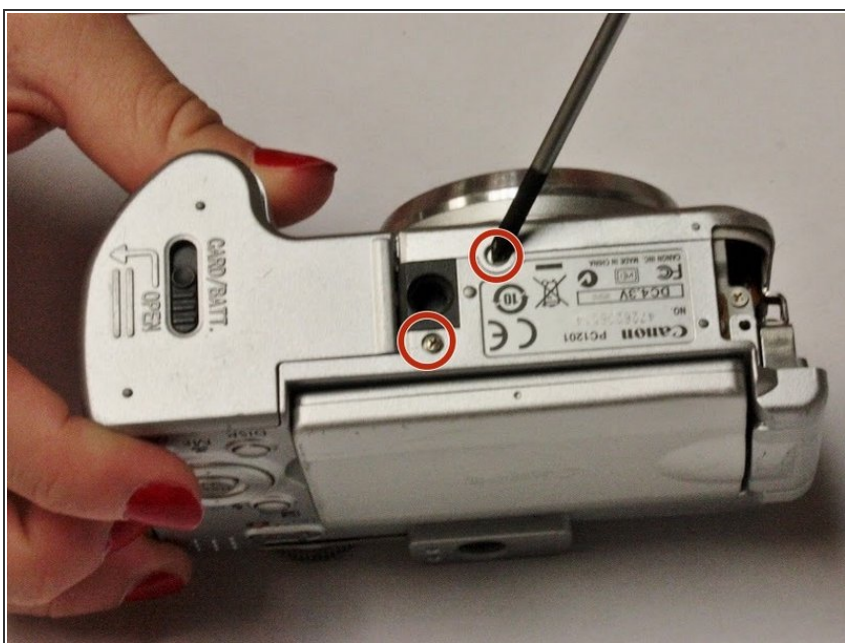
- Open the battery door by sliding the tab on the battery door while pushing the battery door away from the camera.
- Remove batteries.

Step 2



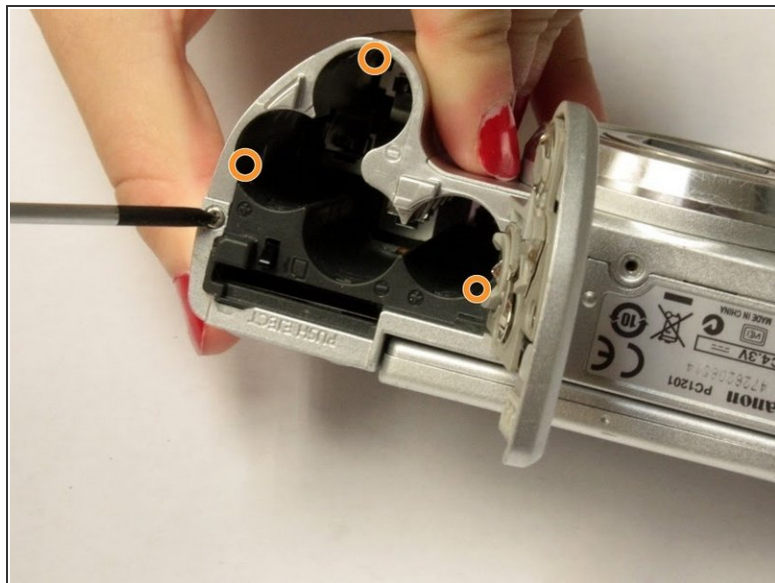
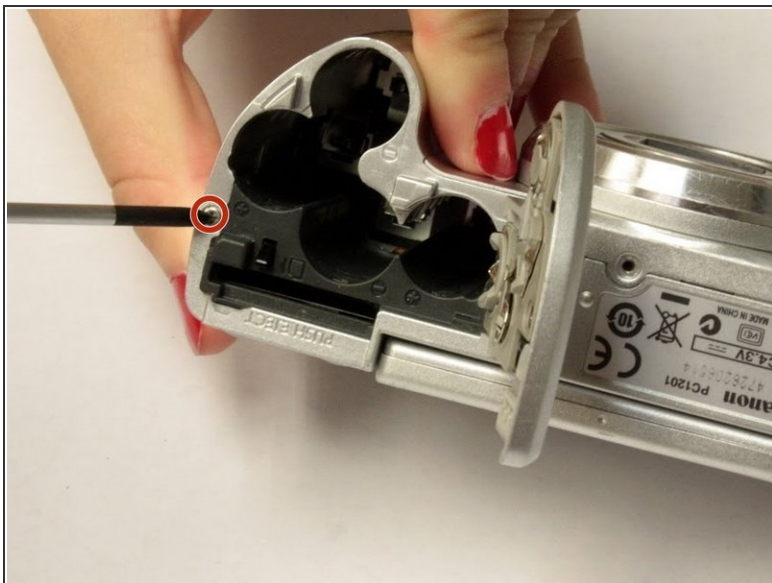
- Remove the three indicated .2mm screws using a Phillips #00 screwdriver.
- Gently pull off side-panel to remove it.

Step 3



- Remove the two indicated .2mm screws using a Phillips #00 screwdriver.

Step 4



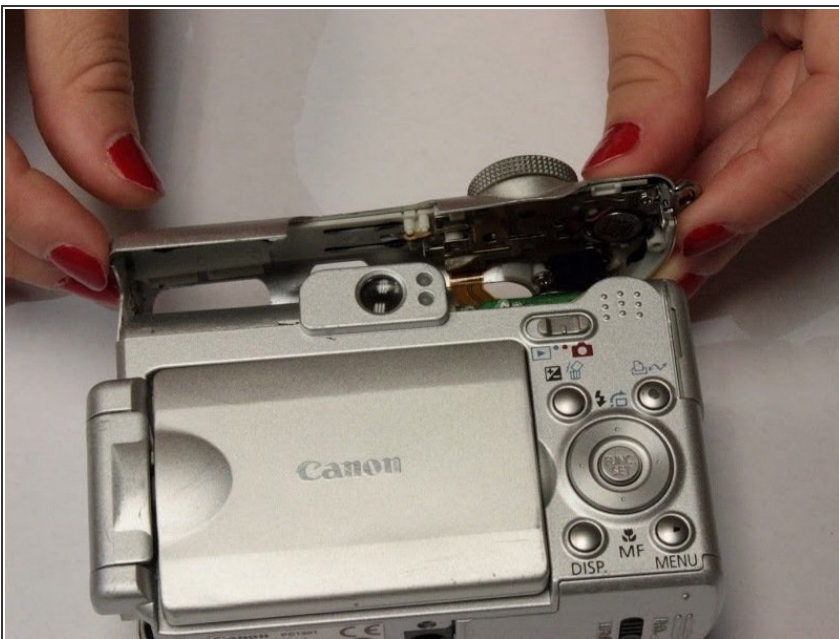
- Remove the indicated .2mm screw using a Phillips #00 screwdriver.
- Remove the three .2mm screws located on the internal side of the top panel within the battery chamber using a Phillips #00 screwdriver.

Step 5



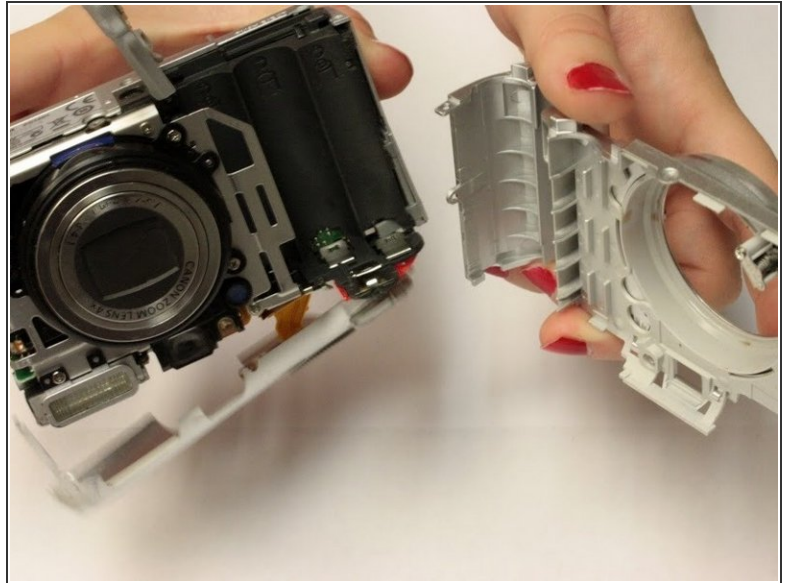
- Open 'DIGITAL A/V OUT' door on camera.
- Remove the two indicated .2mm screws using a Phillips #00 screwdriver.

Step 6



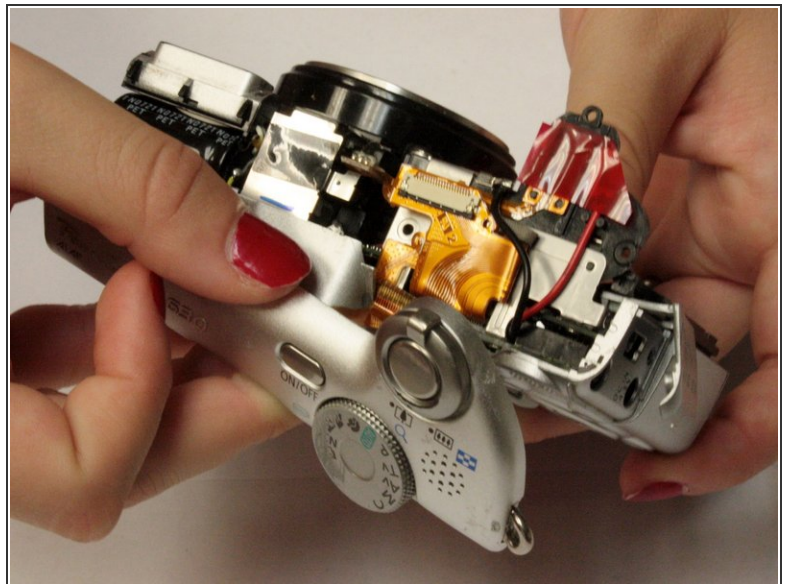
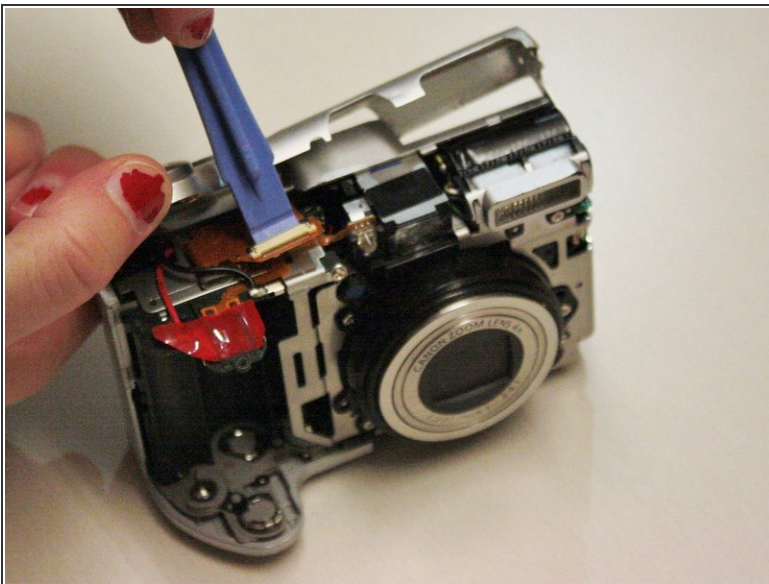
- Grip the sides of the top panel and gently pull to separate the top panel from the camera body.
- ⓘ The top panel will not completely detach.

Step 7



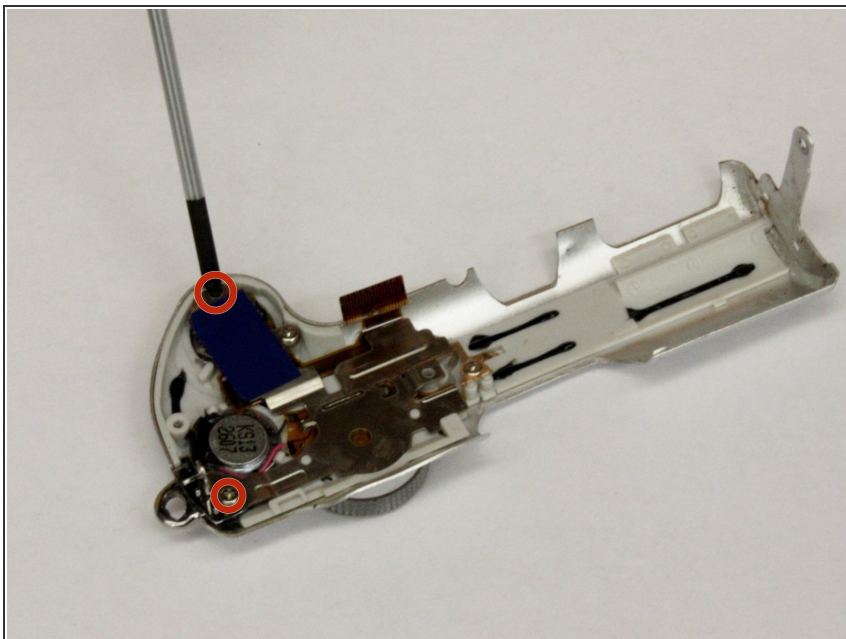
- Gently pull the front and back panels apart, and use a Phillips #00 screwdriver to remove the screw connecting the panels.
- Gripping the top and bottom, gently pull the front panel away from the camera body to remove it.

Step 8 — Shooting Mode Dial



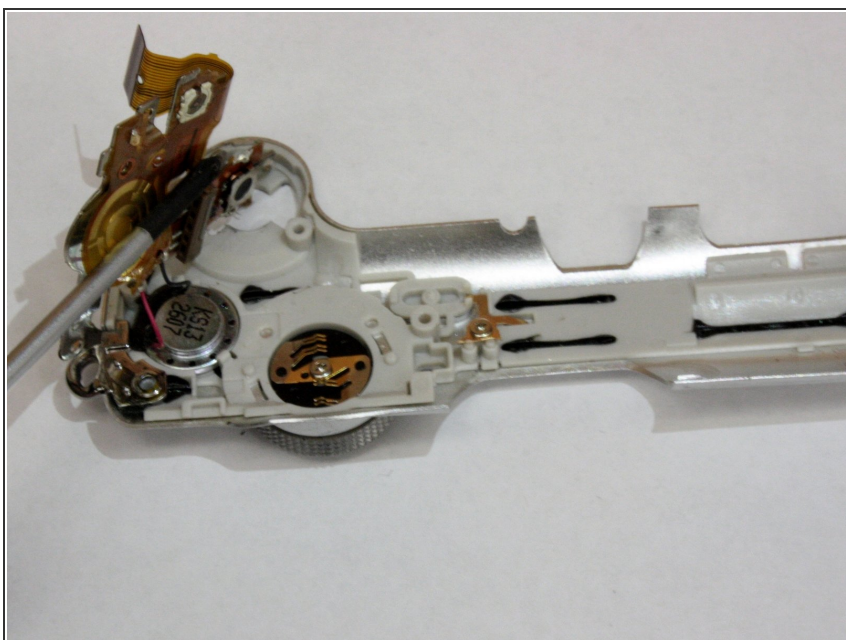
- Pry open the connector on the yellow ribbon cable using a plastic opening tool.

Step 9



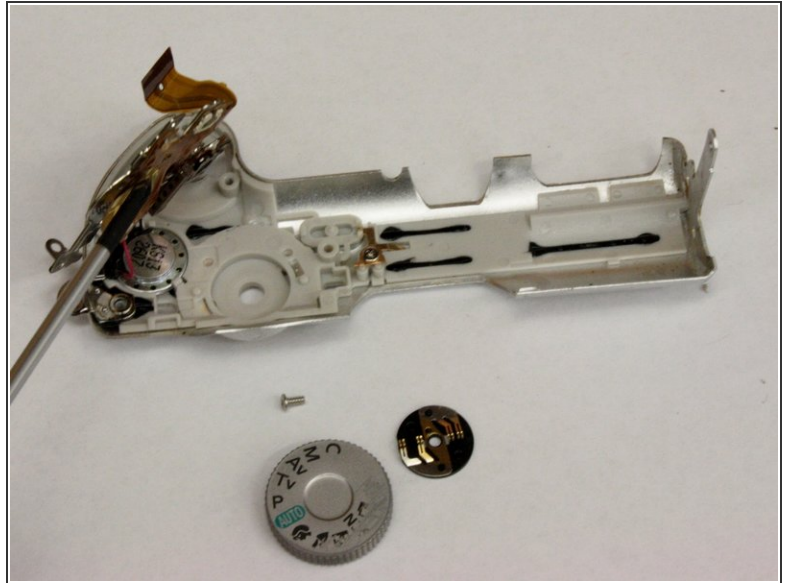
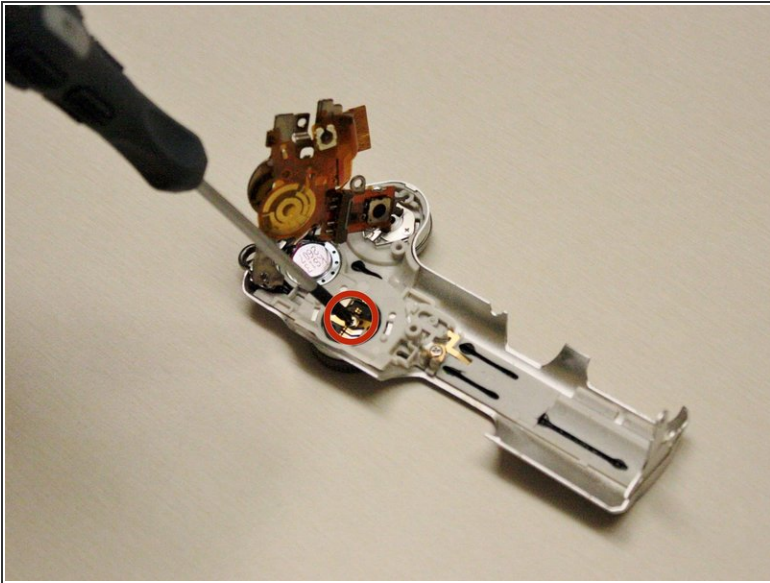
- Remove the 2 mm screws from the metal plate.

Step 10



- Pull away the metal plate, exposing the underbelly of the mode dial.
- ⚠ Be careful not to pull too hard. Metal plate should remain attached.

Step 11



- Remove the 2mm screw using the #00 Phillips screwdriver.
- The mode dial should fall out.

To reassemble your device, follow these instructions in reverse order.