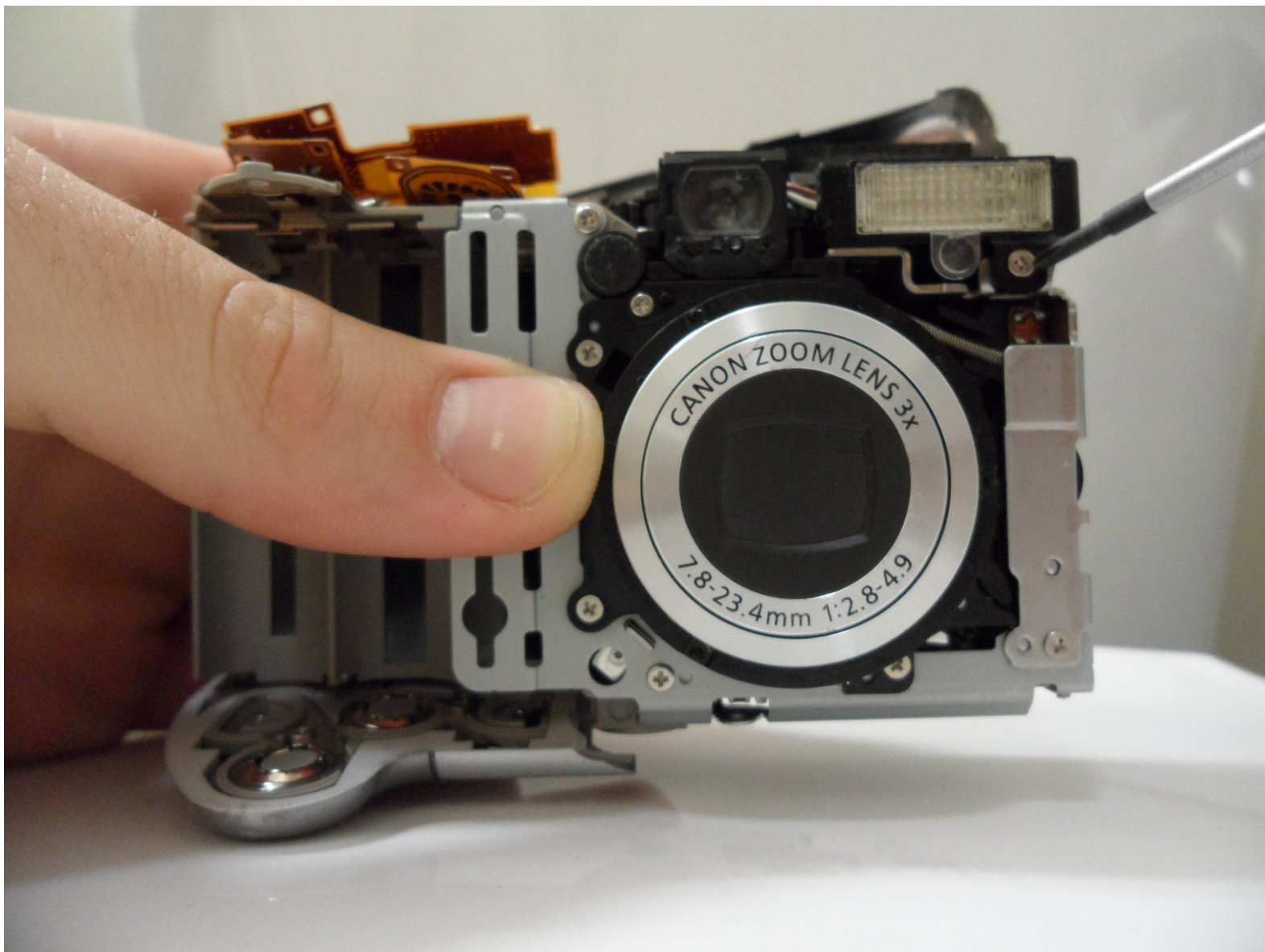




Canon PowerShot A80 Flash Assembly Replacement

This guide allows you to remove and replace the light bulb in the flash assembly.

Written By: rylene contreras



INTRODUCTION

The flash assembly is a retractable light bulb fixture that displays a quick burst of background light emitted from a light bulb.

TOOLS:

- [Phillips #00 Screwdriver](#) (1)
 - [Solder](#) (1)
 - [Soldering Iron](#) (1)
 - [iFixit Opening Tools](#) (1)
-

Step 1 — Back Cover



- Remove the three Phillips screws (shown) located at the bottom of the camera.

Step 2



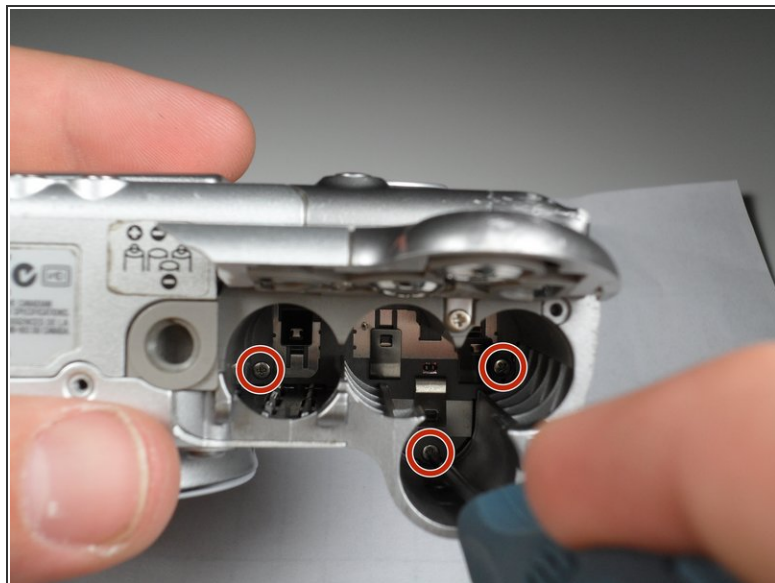
- Open the door to the CompactFlash memory card slot by sliding it towards you and swinging it open.
- Remove the memory card if it is still in the camera.
- Use the Phillips screwdriver to remove the Phillips screw (shown) underneath the memory card slot door.

Step 3



- Remove the Phillips screw (shown) located inside the top of the memory card compartment.

Step 4



- Open the battery compartment door at the bottom of the camera by sliding the latch to the right and then sliding the door down.
 - Remove the batteries from the compartment.
 - Unscrew the three Phillips screws (shown) located inside the battery compartment.
- i** The screw on the left is longer than the other two.

Step 5



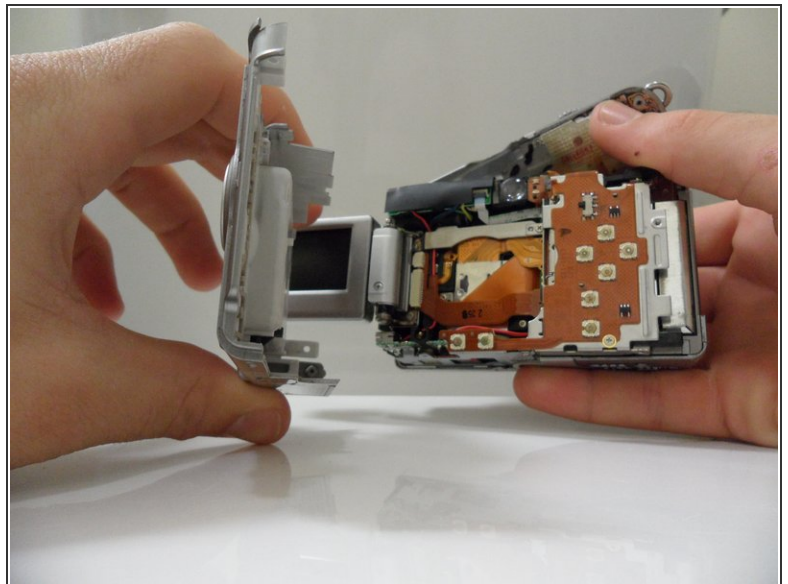
- You should now be able to remove the top lid of the camera.
- ⚠ Be cautious of the fragile mylar cable that connects the lid to the main body of the camera.
- ⚠ Removing the lid takes a little force. Do this gently. There may be a snapping sound.
- The door to the memory card compartment will be freed and should be removable now.
- ⓘ In other versions of this camera, there is a tab that secures the top from the wrist strap. If yours has this, you won't be able to completely separate the top until you have removed the top screw in Step 8.

Step 6




- Remove the lower Phillips screw (shown) from the side of the camera.
- Open the small rubber door below this screw that covers the connectors.

Step 7



- Open and pivot the LCD screen to its widest open position.
- Remove the rear cover by pulling it straight away from the body of the camera.

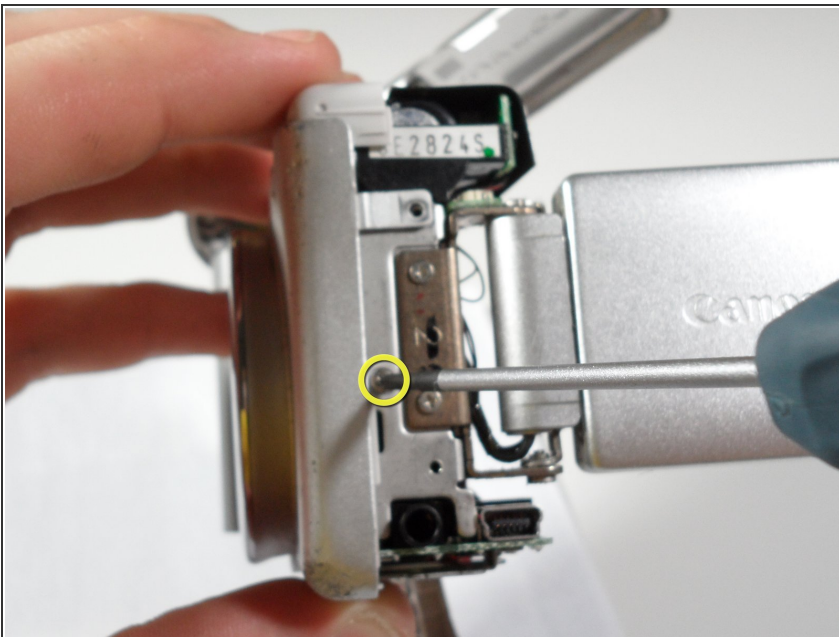
 When reassembling the camera, remember to replace the screws in the same location from which you removed them. Otherwise, you may damage the camera.

Step 8 — Front Cover



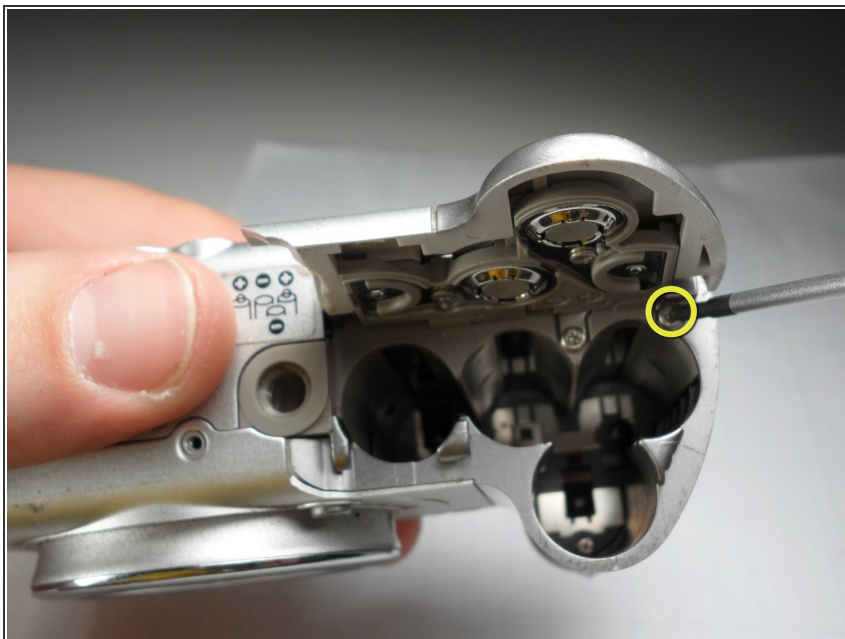
- Now remove the top screw 3.3 mm long on the side of the camera that hold the side panels and the front cover using the #00 screwdriver.
- Gently remove the side panel of the camera by pulling it away from the camera.
- ⓘ The side panel may get stuck on the internal wires, so gently wiggle this panel loose.

Step 9



- Unscrew the 2.4 mm long screw that holds on the front panel underneath the side panel using the #00 screwdriver.

Step 10



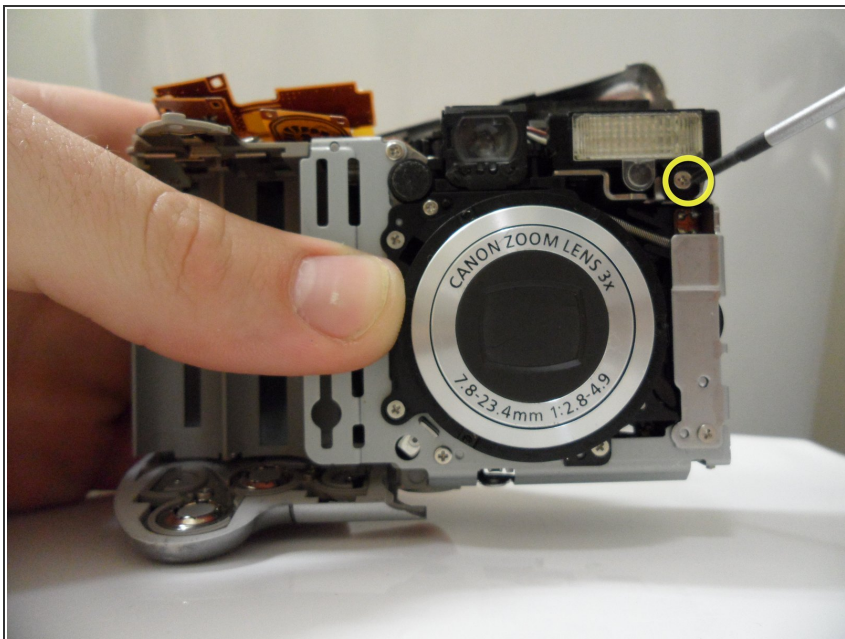
- Underneath the battery cover there is another 3.8 mm screw in the corner that needs to be removed using the #00 screwdriver.

Step 11



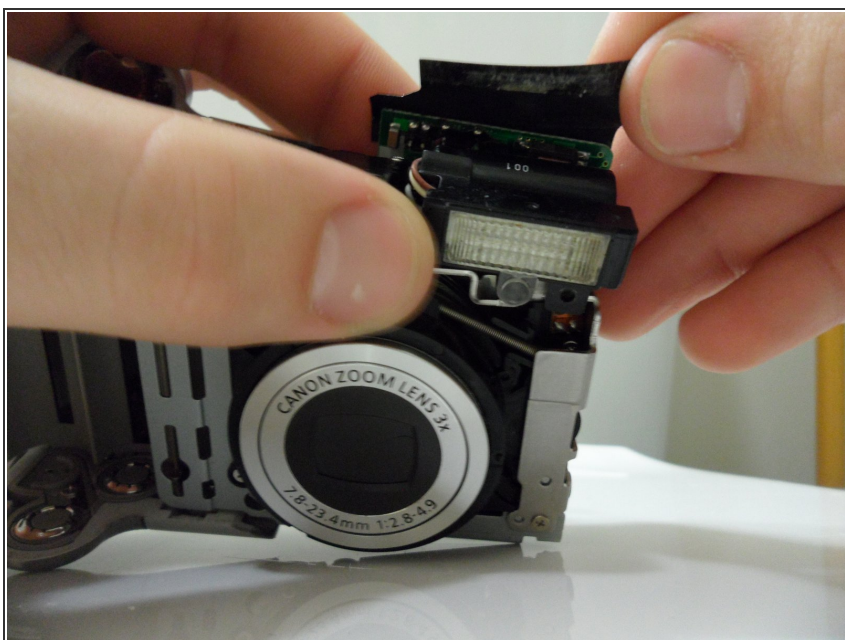
- Gently pull up on the front cover to remove it from the body

Step 12 — Flash Assembly



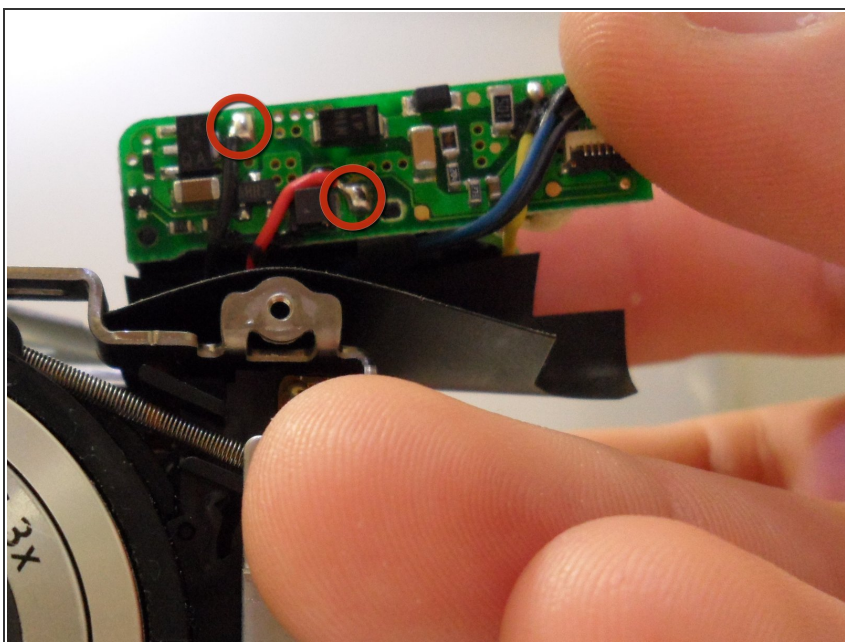
- Unscrew the 3.8 mm screw under the flash housing.

Step 13



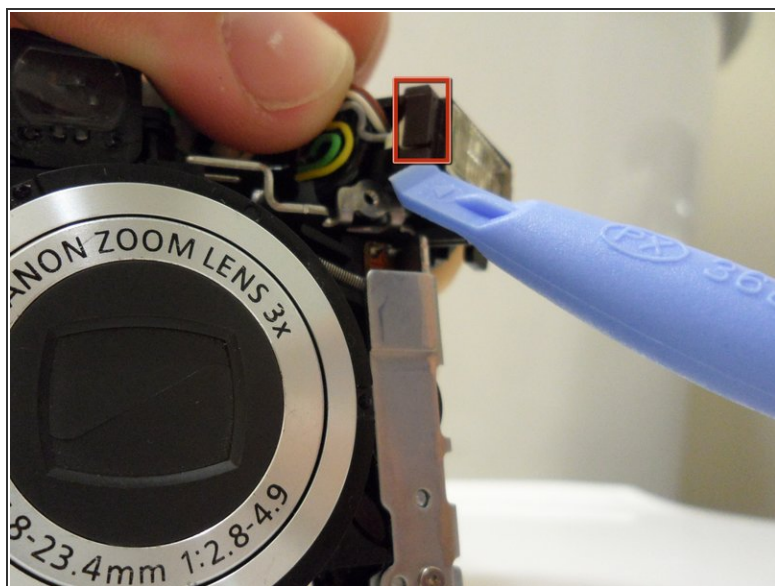
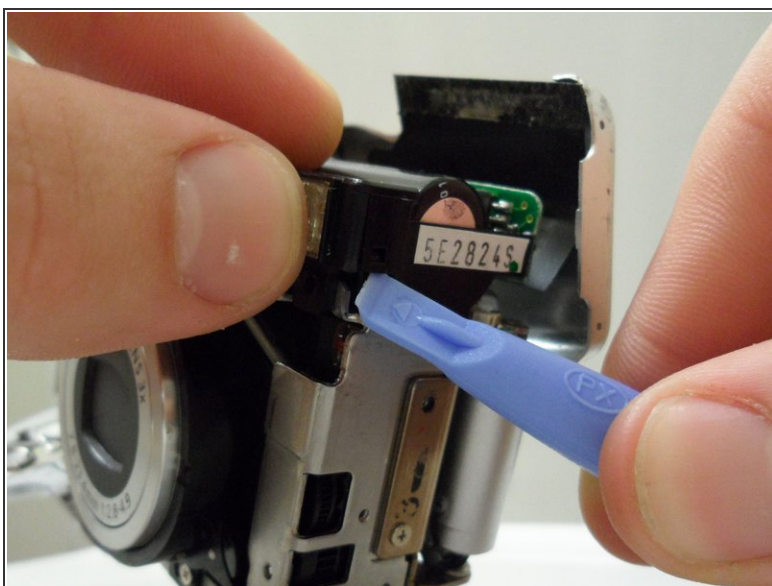
- Lift up black cover.
- ⓘ Black cover is attached to the top of the capacitor with adhesive.

Step 14



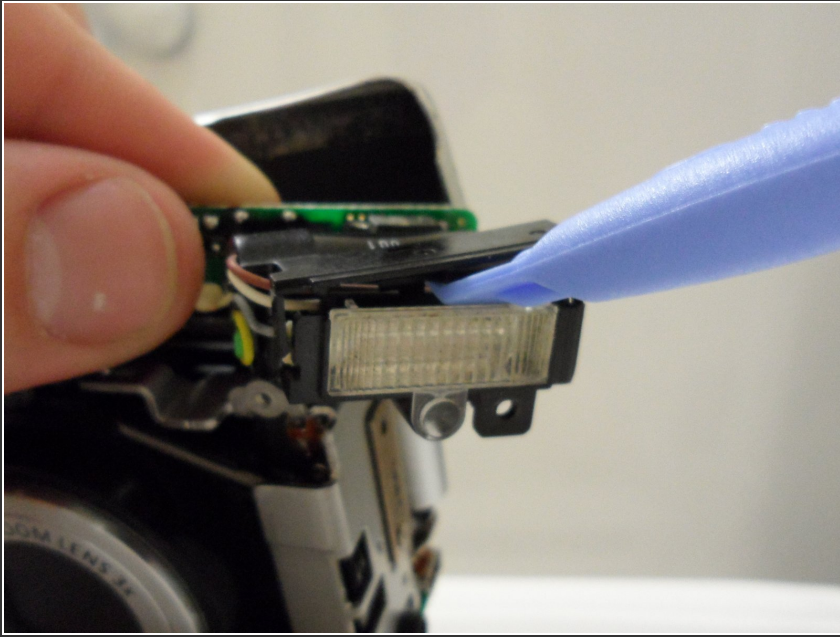
- ⓘ If the entire flash housing needs to be replaced...
- Unsolder the black and red wires from the back of the circuit board behind the flash.

Step 15



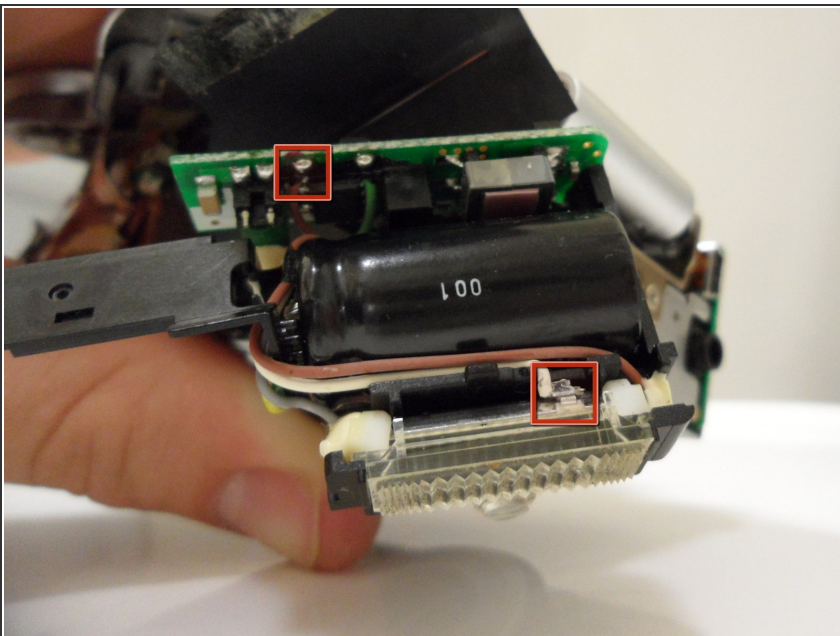
- Use the opening tool to unclip both sides of the black cover on top of the flash

Step 16



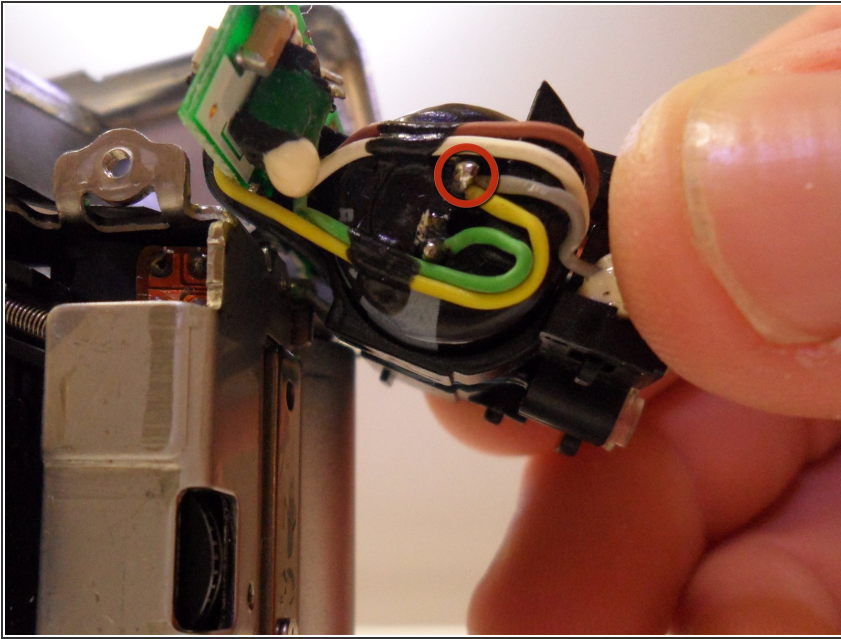
- Use the opening tool to lift off the black flash cover.

Step 17



- ⓘ If the flash needs to be fixed...
- Unsolder the brown wire from the circuit board.
- ⓘ The piece of metal that attaches these parts will have to be bent back.
- ⚠ Make sure the capacitor is discharged before these steps are attempted. Do so with a screwdriver with a rubber handle.

Step 18



- Unsolder the gray wire attached to the capacitor.
- ⓘ This is the last wire that connects to the flash.

To reassemble your device, follow these instructions in reverse order. Remember to re-solder any wires that were unsoldered.