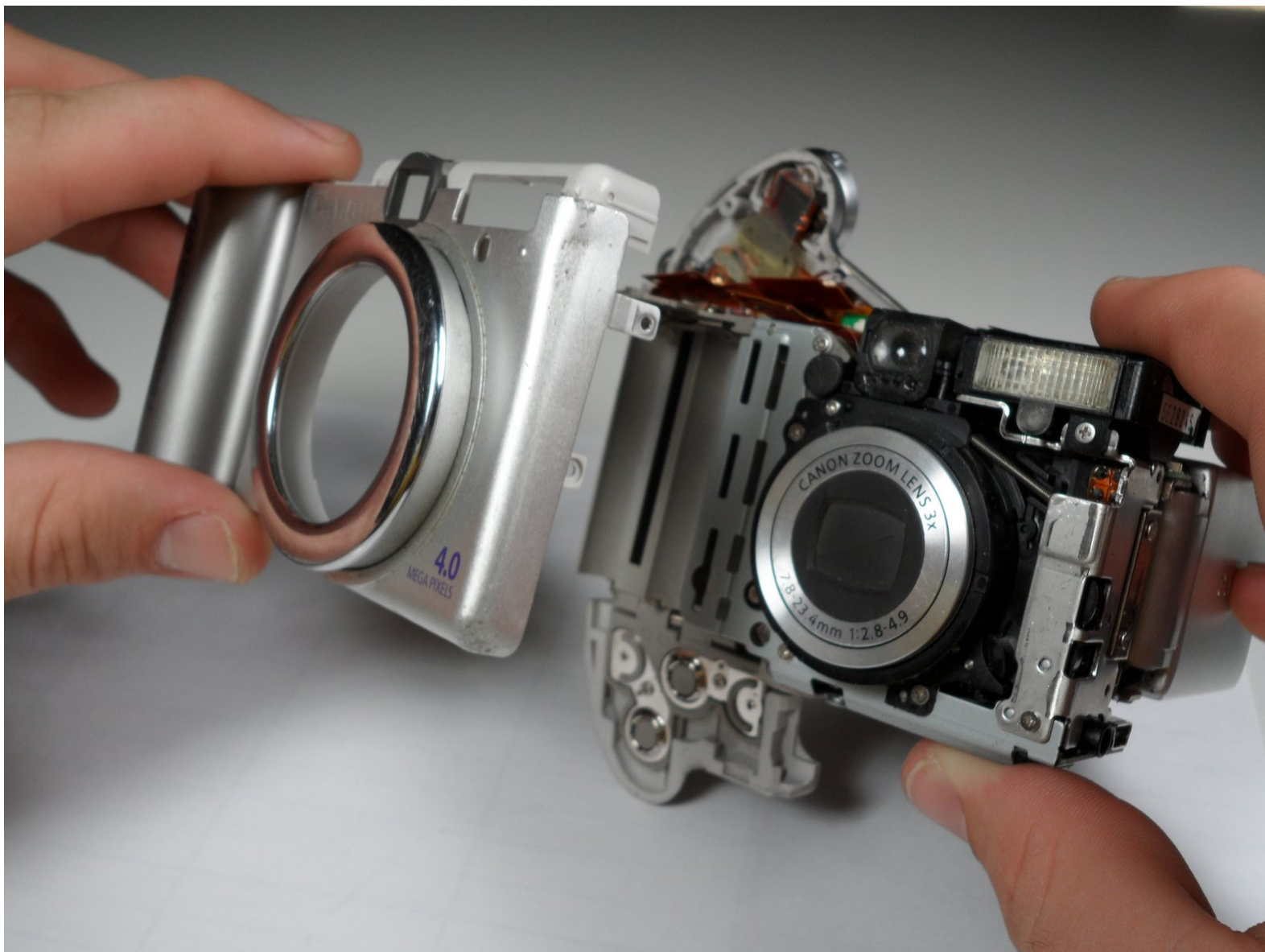




Canon PowerShot A80 Front Cover Replacement

This guide will describe the steps needed to remove the front cover of the camera

Written By: Travis



INTRODUCTION

We will start with the camera intact and take off screws and other parts needed to remove the front cover of the camera



TOOLS:

- [Phillips #00 Screwdriver](#) (1)
-

Step 1 — Back Cover



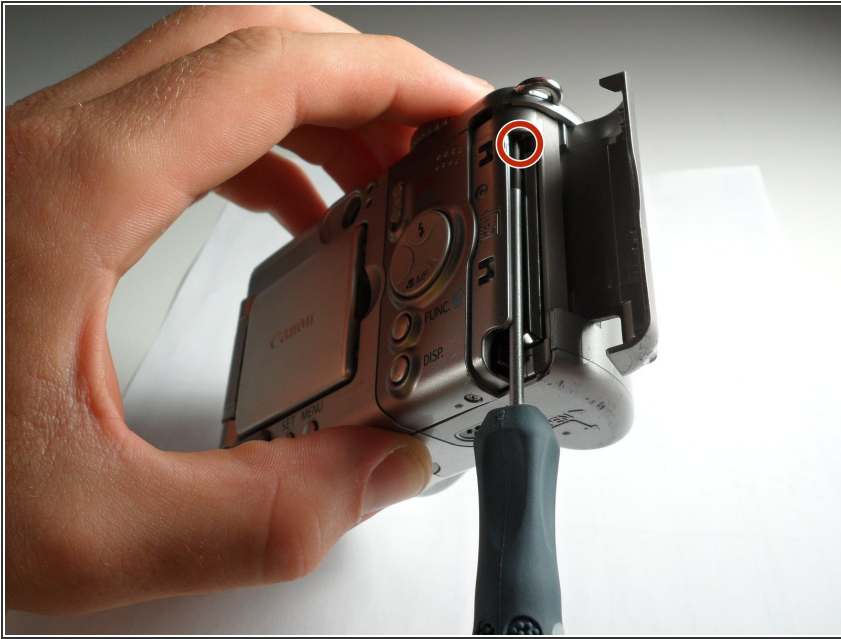
- Remove the three Phillips screws (shown) located at the bottom of the camera.

Step 2



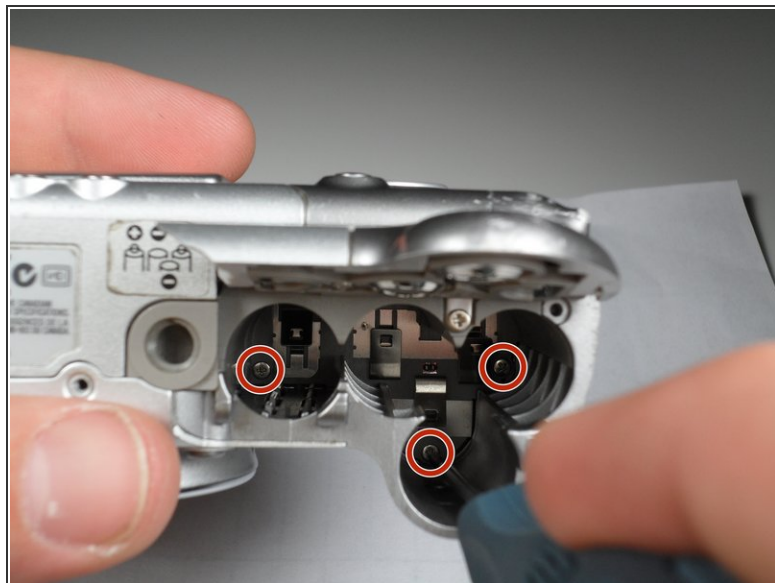
- Open the door to the CompactFlash memory card slot by sliding it towards you and swinging it open.
- Remove the memory card if it is still in the camera.
- Use the Phillips screwdriver to remove the Phillips screw (shown) underneath the memory card slot door.

Step 3



- Remove the Phillips screw (shown) located inside the top of the memory card compartment.

Step 4



- Open the battery compartment door at the bottom of the camera by sliding the latch to the right and then sliding the door down.
 - Remove the batteries from the compartment.
 - Unscrew the three Phillips screws (shown) located inside the battery compartment.
- i** The screw on the left is longer than the other two.

Step 5



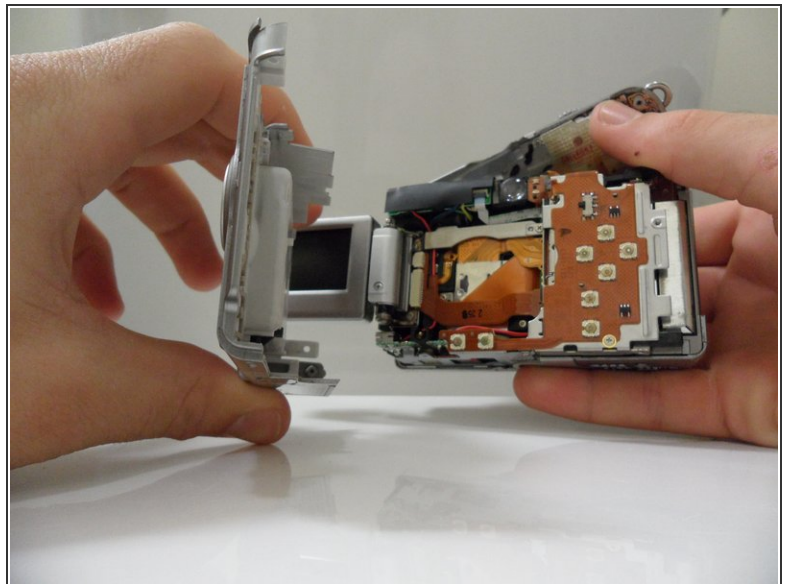
- You should now be able to remove the top lid of the camera.
- ⚠ Be cautious of the fragile mylar cable that connects the lid to the main body of the camera.
- ⚠ Removing the lid takes a little force. Do this gently. There may be a snapping sound.
- The door to the memory card compartment will be freed and should be removable now.
- ⓘ In other versions of this camera, there is a tab that secures the top from the wrist strap. If yours has this, you won't be able to completely separate the top until you have removed the top screw in Step 8.

Step 6




- Remove the lower Phillips screw (shown) from the side of the camera.
- Open the small rubber door below this screw that covers the connectors.

Step 7



- Open and pivot the LCD screen to its widest open position.
- Remove the rear cover by pulling it straight away from the body of the camera.

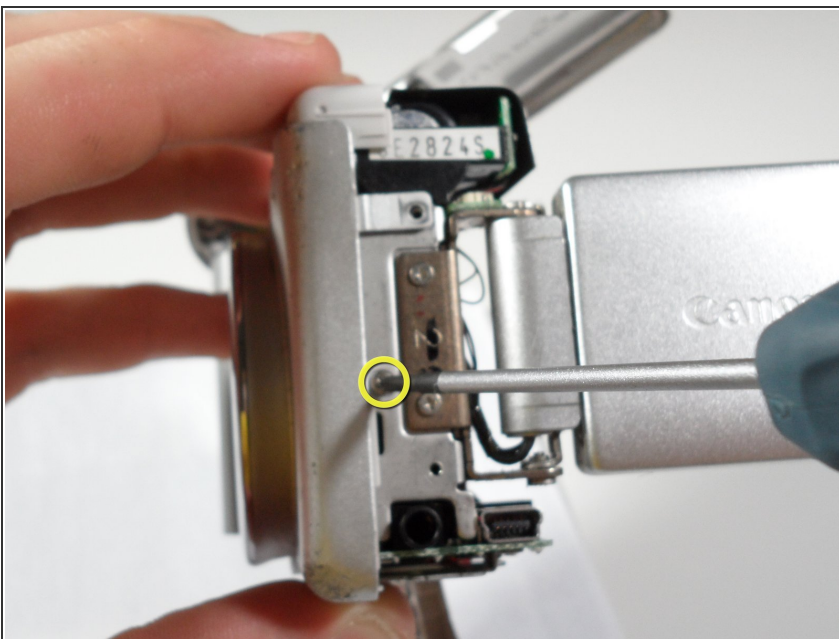
 When reassembling the camera, remember to replace the screws in the same location from which you removed them. Otherwise, you may damage the camera.

Step 8 — Front Cover



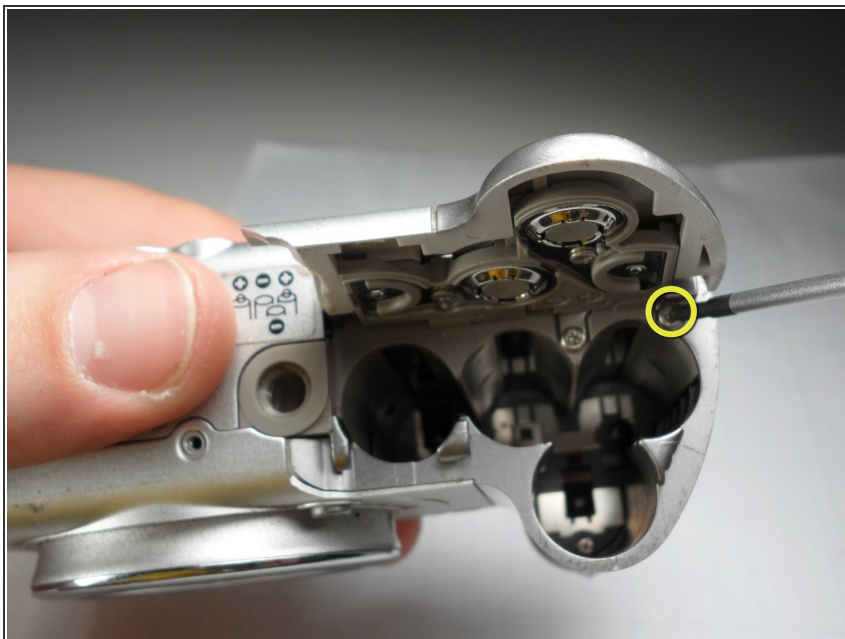
- Now remove the top screw 3.3 mm long on the side of the camera that hold the side panels and the front cover using the #00 screwdriver.
- Gently remove the side panel of the camera by pulling it away from the camera.
- ⓘ The side panel may get stuck on the internal wires, so gently wiggle this panel loose.

Step 9



- Unscrew the 2.4 mm long screw that holds on the front panel underneath the side panel using the #00 screwdriver.

Step 10



- Underneath the battery cover there is another 3.8 mm screw in the corner that needs to be removed using the #00 screwdriver.

Step 11



- Gently pull up on the front cover to remove it from the body

To reassemble your device, follow these instructions in reverse order.