



# Canon PowerShot D20 LCD Screen Replacement

Is the screen on your Canon PowerShot D20 black, even when the camera is on? This guide will show you how to replace it.

Written By: Alex Giannousis



## INTRODUCTION

The Canon PowerShot D20 is waterproof and shockproof, so it won't suffer from a cracked LCD screen. However, if the camera is improperly sealed, water damage may prevent the screen from working. In this case, make sure the camera still works by taking a few pictures and uploading them to your computer, then replace the screen.



### TOOLS:

- [1.5mm Hex Screwdriver](#) (1)
- [Phillips #00 Screwdriver](#) (1)
- [Tweezers](#) (1)
- [Spudger](#) (1)

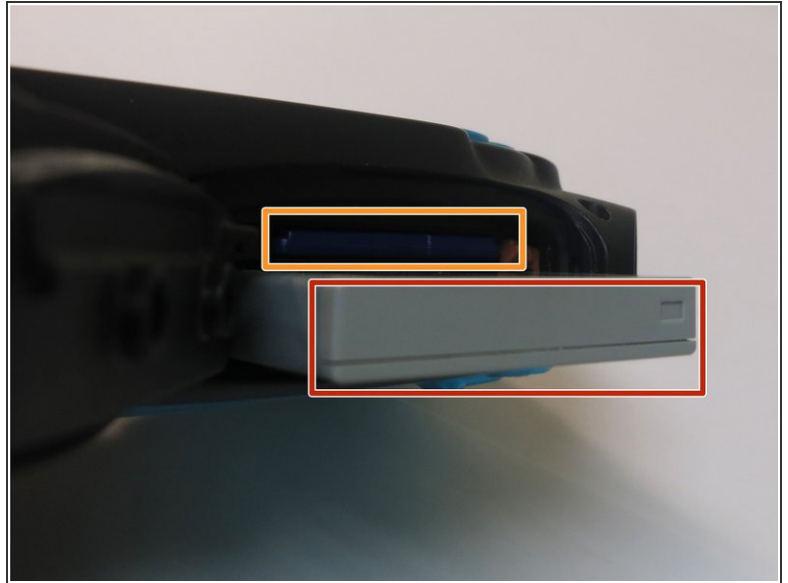


### PARTS:

- [replacement LCD screen](#) (1)

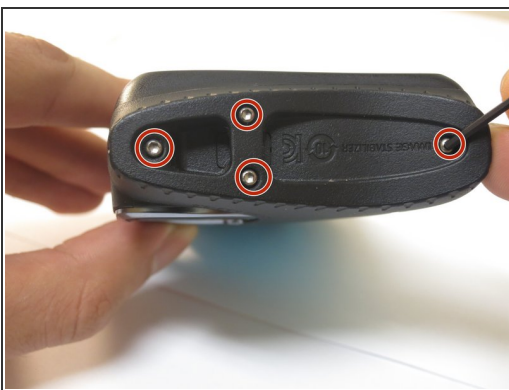
*There are many websites that sell replacements. Make sure you have the right one for your camera.*

## Step 1 — LCD Screen



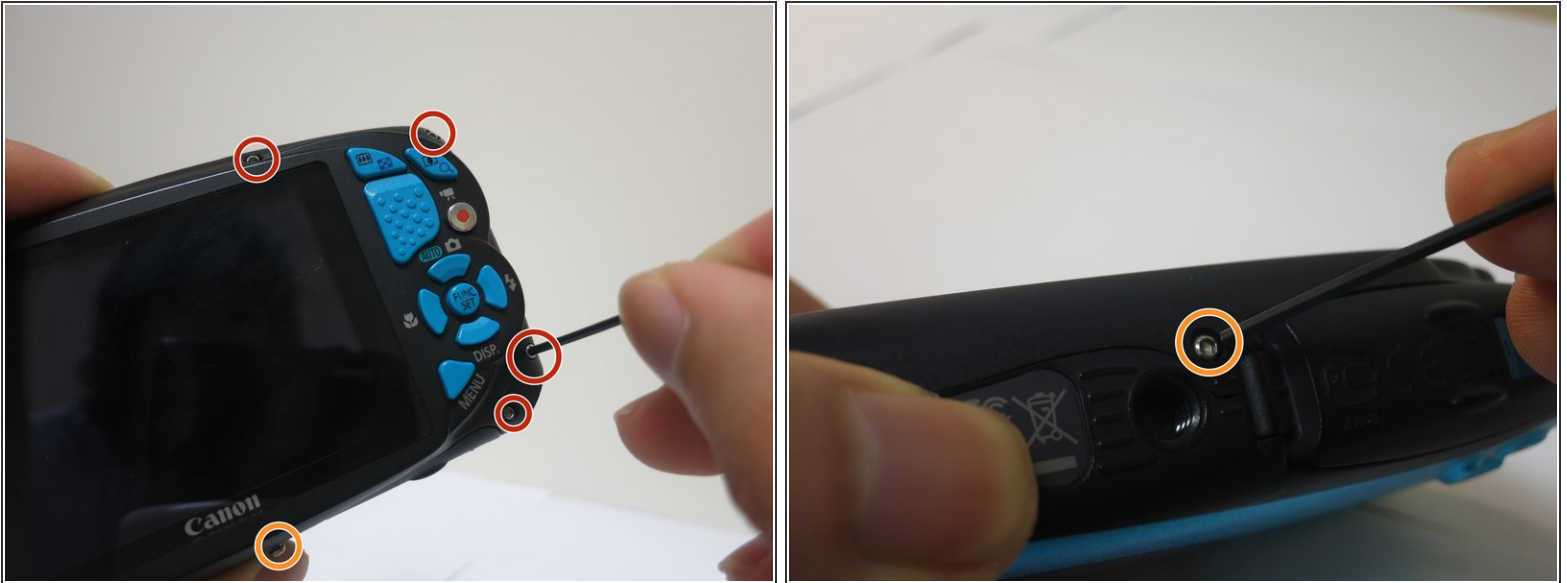
- Open the cover on the bottom of the camera.
- Remove the battery.
- Remove the memory card.

## Step 2



- Using the 1.5mm hex screwdriver, remove the screws from the end cap.
  - ⓘ Note the location of each screw. The top screw is about .4" long, while the bottom three are about .15".
- Remove the end cap.

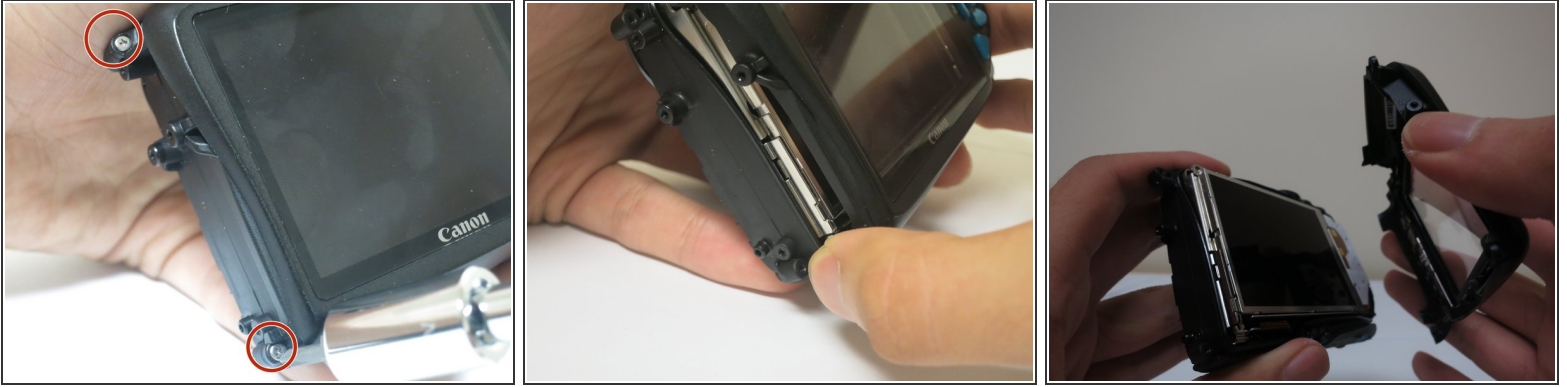
## Step 3



- Using the 1.5mm hex screwdriver, remove the four screws from the rear of the case.
- Remove the screw from the bottom of the case.
- ⓘ The bottom screw and the top-right screw are both .15". The two bottom-right screws are both .4".
- ⓘ The top-middle screw is also .15" but has a different size thread and a blue mark.

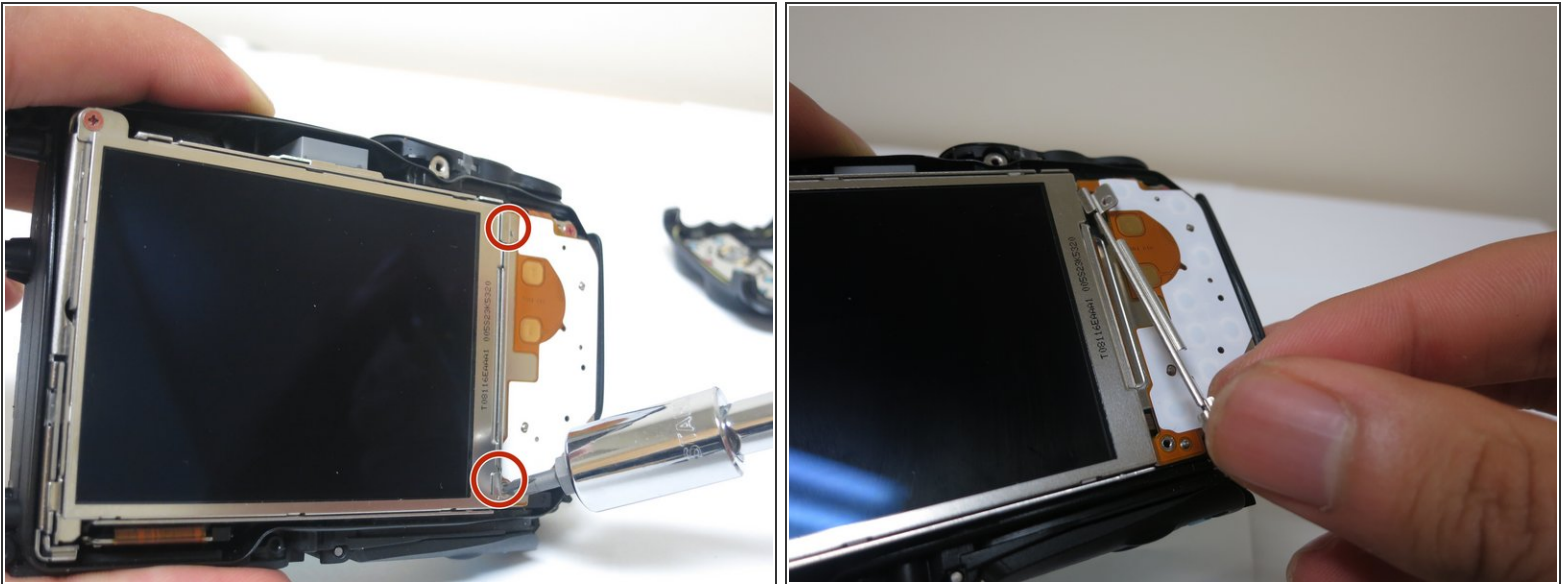


## Step 4



- Using the Philips #00 screwdriver, remove the two screws on the left side of the case.
  - ⓘ These two screws are .2"
- Remove the rear of the case.

## Step 5



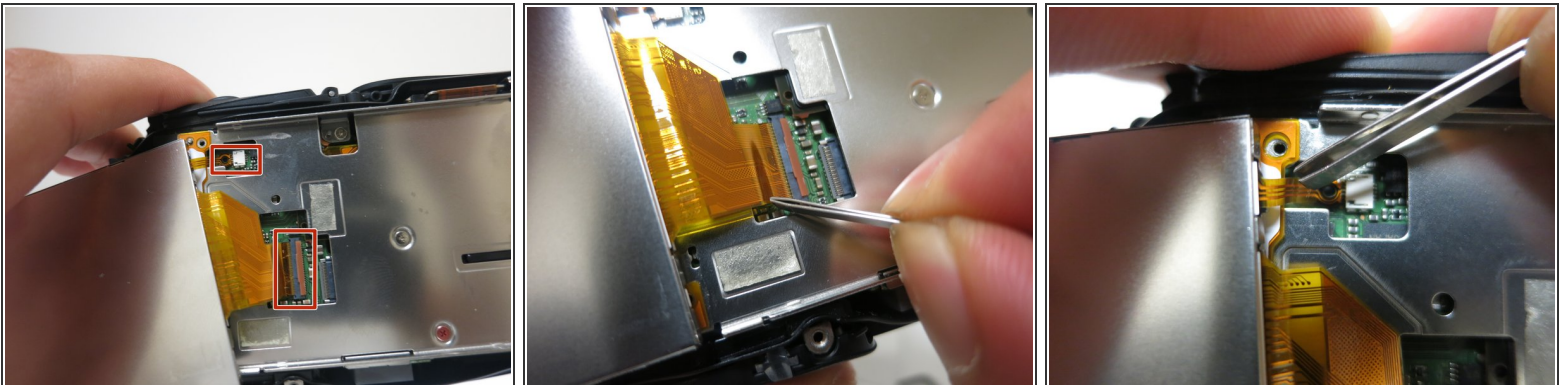
- Using the Phillips #00 screwdriver, remove the two screws holding the LCD screen in place.
  - ⓘ These two screws are the smallest; they are less than .1" and have a small blue mark on the thread.
- Remove the small metal bar holding in the LCD screen.

## Step 6



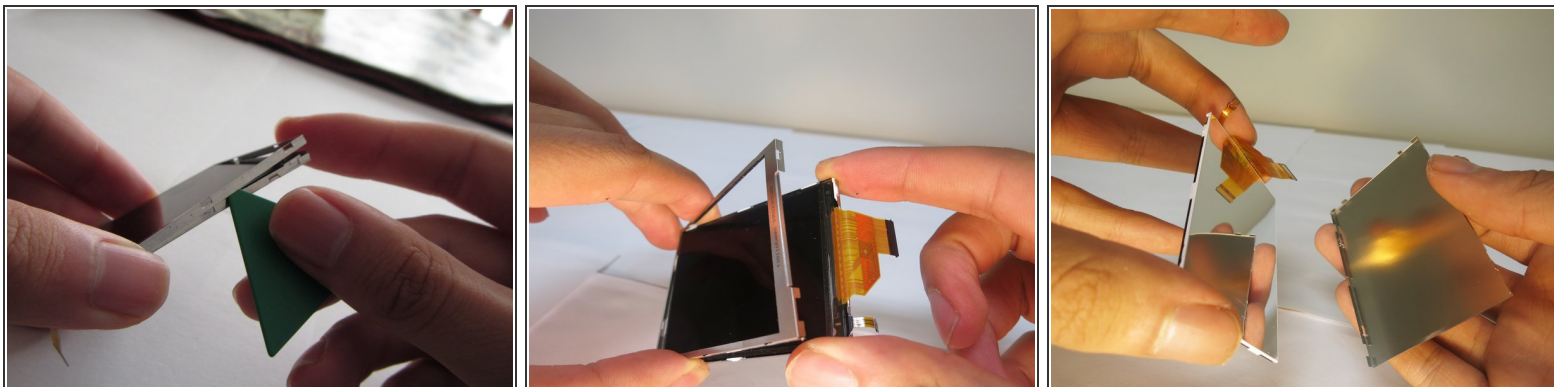
- Slide the spudger under the LCD screen and pry it off. Since the screen is glued down with adhesive, some effort may be required.

## Step 7



- **Gently** disconnect the two ribbon wires from the camera. Use tweezers or a spudger to remove them.
  - To remove these cables, pull them straight out of their sockets.
  - When reassembling, be sure you plug these cables into the sockets fully. You will hear a faint click when they are fully in.

## Step 8



- i** If your replacement LCD screen comes in a metal case, skip this step.
- Use a guitar pick or spudger to pry the front and back of the metal case off the LCD screen.

To reassemble your device, follow these instructions in reverse order.