



# Canon PowerShot ELPH 150 IS Back Plate/Menu Button Replacement

Replace the back plate and/or menu buttons for the Canon PowerShot ELPH 150 IS

Written By: Alex Larrimore



---

## INTRODUCTION

This guide will help users correctly remove the back plate and/or the menu buttons on the camera in six simple steps.



### TOOLS:

- [Phillips #00 Screwdriver](#) (1)
-

## Step 1 — Back Plate/Menu Buttons



- Locate the ON/Off button on the top of the camera and hold it down until the screen and all lights on the camera go dark.

## Step 2



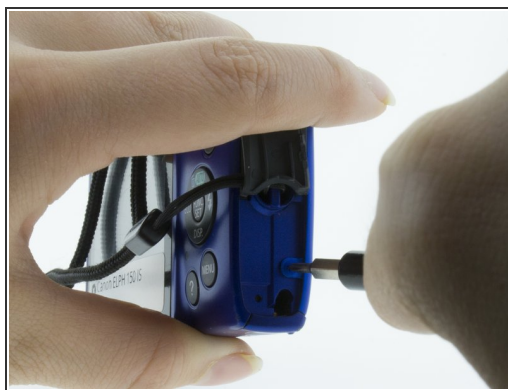
- Locate the back plate of the camera (contains the LCD screen and menu buttons).

## Step 3



- To remove the back plate you will need to unscrew the 6 support screws securing it to the camera.
- The first 2 screws are located on the bottom of the camera.
- Remove the screws using a Phillips #00 screwdriver.

## Step 4



- Remove the next 2 screws located behind the AV port using the same Phillips #00 screwdriver.

## Step 5



- Use a Phillips #00 screwdriver to remove the final 2 screws from the blue side panel.

## Step 6



- Once screws are removed, gently pry the front plate and backplate apart along the seams on the bottom of the camera.
- Completely remove the back plate.

To reassemble your device, follow these instructions in reverse order.