



Canon PowerShot ELPH 150 IS Card/Battery Door Replacement

Replace the Card/Battery Door on the Canon PowerShot ELPH 150 IS

Written By: Morgan Forester



INTRODUCTION

This guide will assist you in replacing the card/battery door on your camera.

Step 1 — Card/Battery Door



- Safety First: Power down your camera by locating the ON/Off button on the top of the camera and holding it down until the screen and all lights on the camera go dark.

Step 2



- Locate the CARD/BATT. OPEN door on the bottom right of the camera.

Step 3



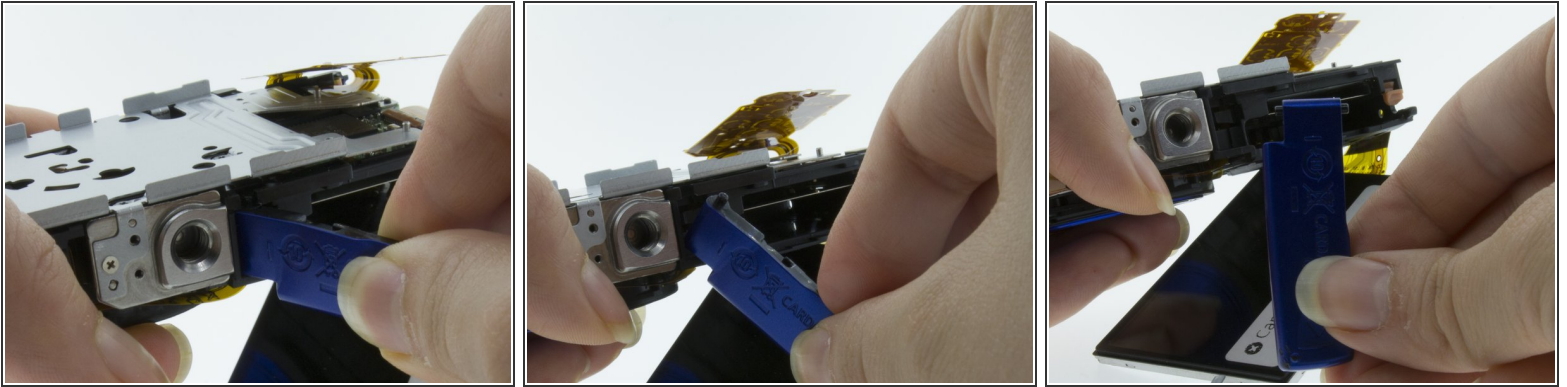
- In order to replace the door, you must first remove the back plate off the camera. [Use this guide to do so.](#)

Step 4



- With the backplate removed, turn the camera so that the CARD/BATT. OPEN door is face up and to the right. Press down on the door as you slide it to the right. You should hear a click which indicates that the door is unlocked and will freely open.

Step 5



- With the CARD/BATT. OPEN door open, and the backplate off, gently pull the door from a 90 degree angle back towards you. Once you hear a pop (a sign that one side pin has released), you can slide the door away from you to release the pin on the other side as well. Remove door.

To reassemble your device, follow these instructions in reverse order.