



Canon PowerShot ELPH 150 IS LCD Screen Replacement

Replace Canon PowerShot ELPH 150 IS LCD Screen

Written By: Alex Larrimore



INTRODUCTION

This guide will give clear instruction that allows you to replace your camera's LCD screen if it has become cracked or damaged.



TOOLS:

- [Phillips #00 Screwdriver](#) (1)
-

Step 1 — Back Plate/Menu Buttons



- Locate the ON/Off button on the top of the camera and hold it down until the screen and all lights on the camera go dark.

Step 2



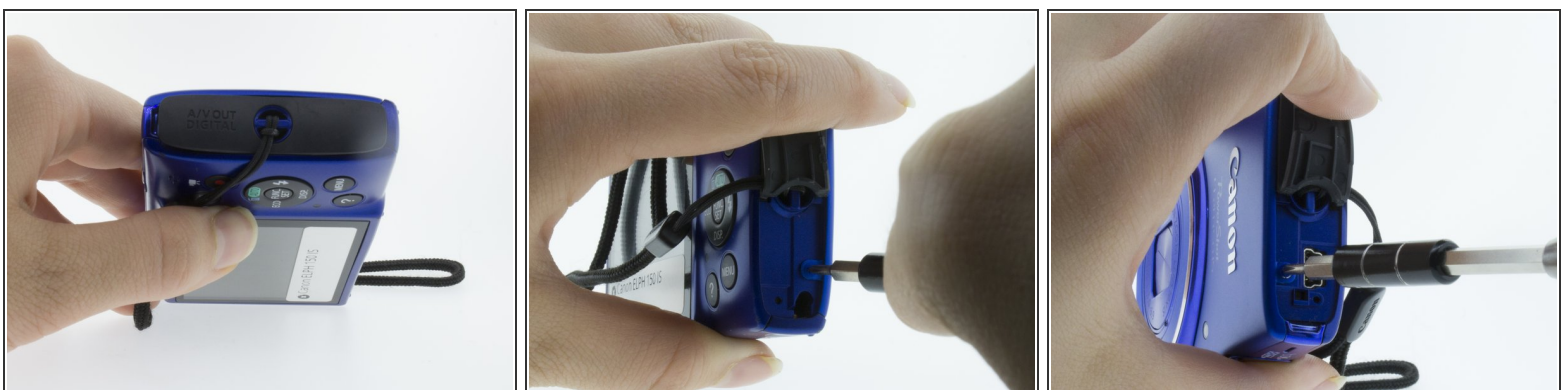
- Locate the back plate of the camera (contains the LCD screen and menu buttons).

Step 3



- To remove the back plate you will need to unscrew the 6 support screws securing it to the camera.
- The first 2 screws are located on the bottom of the camera.
- Remove the screws using a Phillips #00 screwdriver.

Step 4



- Remove the next 2 screws located behind the AV port using the same Phillips #00 screwdriver.

Step 5



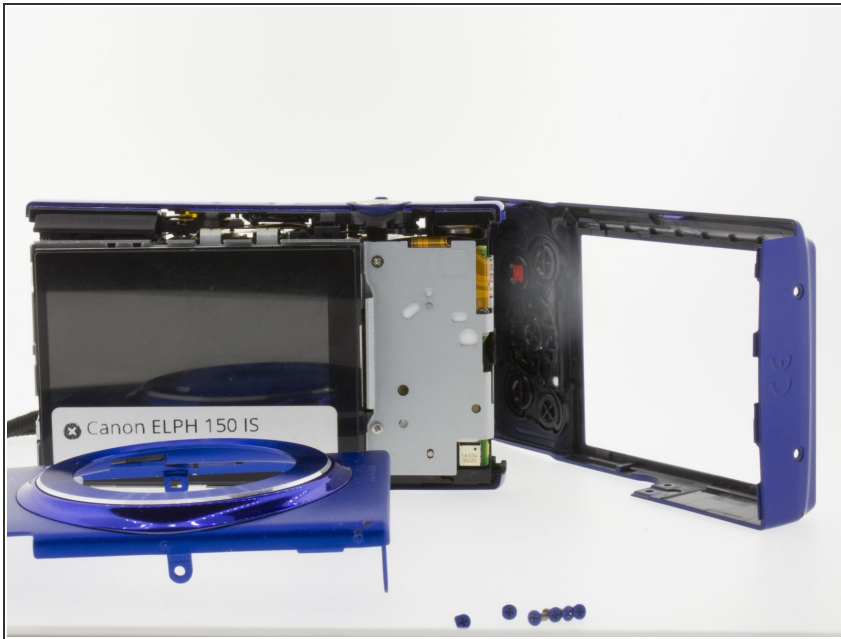
- Use a Phillips #00 screwdriver to remove the final 2 screws from the blue side panel.

Step 6



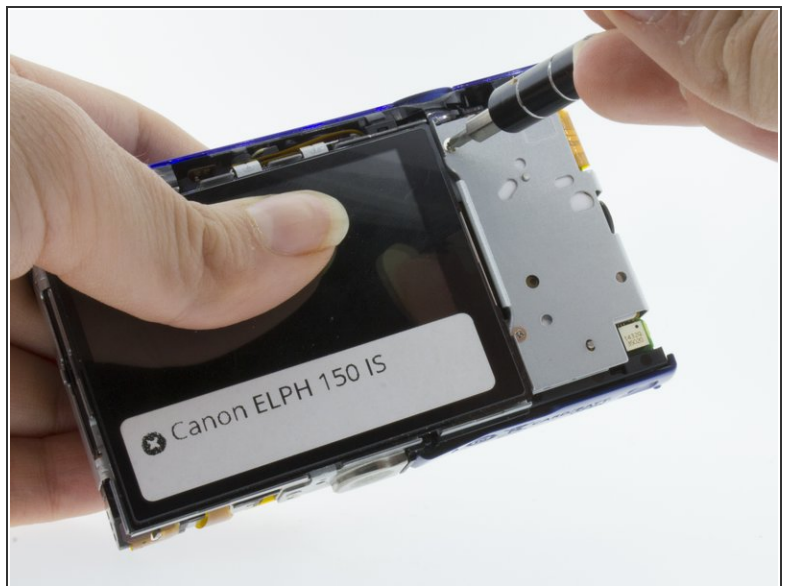
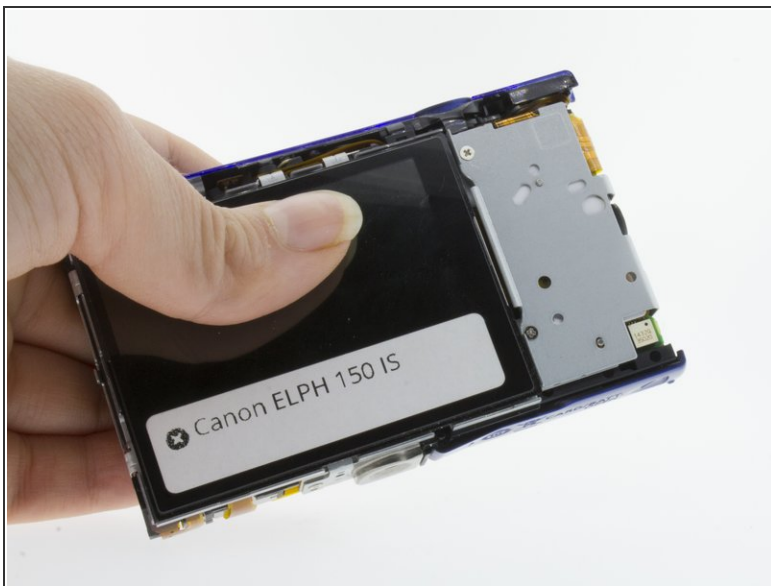
- Once screws are removed, gently pry the front plate and backplate apart along the seams on the bottom of the camera.
- Completely remove the back plate.

Step 7 — LCD Screen



- Once the back plate and face plate have been removed, you can begin to remove the LCD screen.

Step 8



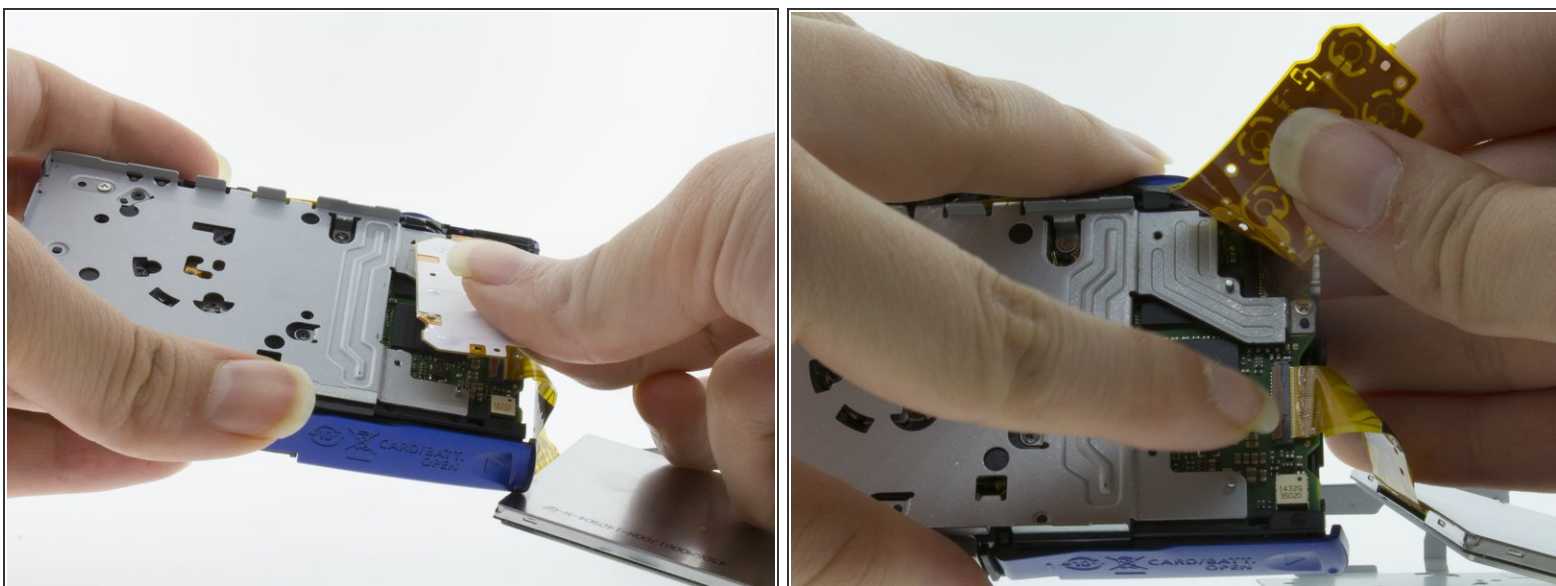
- Turn the camera so that the LCD screen is facing you.
- Remove the 2 screws on the silver plate to the right of the screen using the PH00 screw driver head.

Step 9



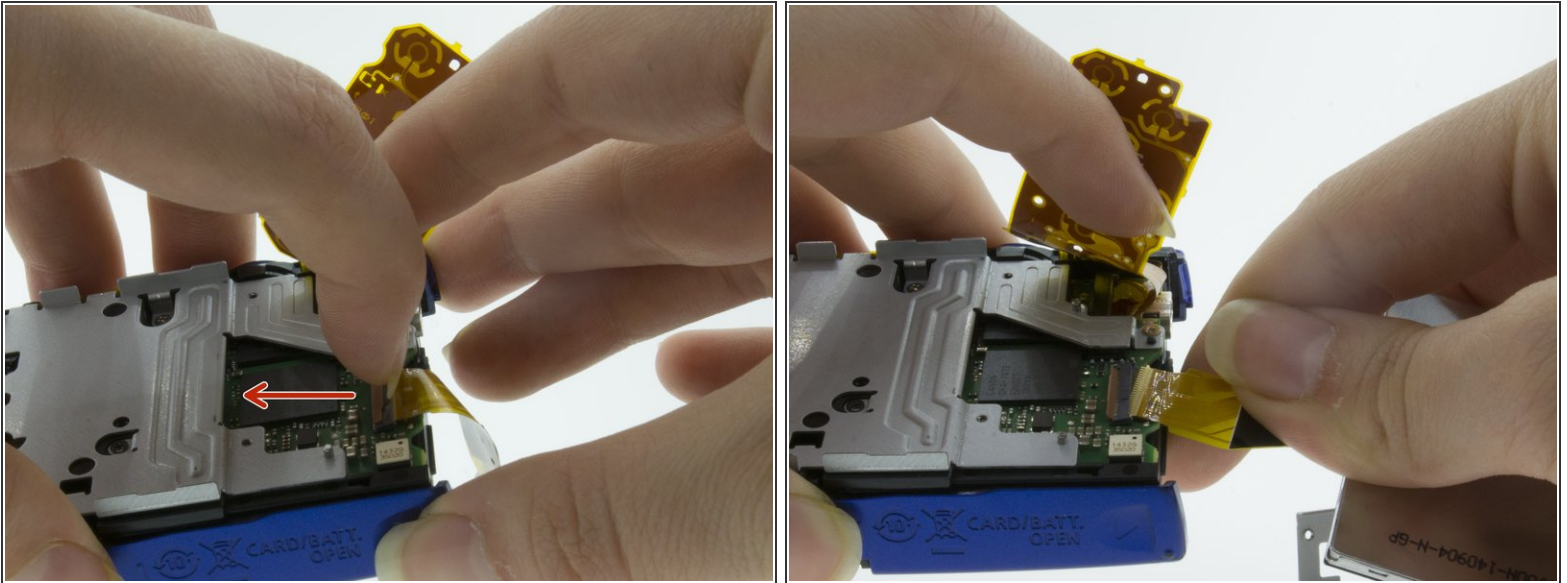
- Gently remove the silver plate by pulling it back towards you as you hold the camera firmly in the other hand.
- With the plate removed you will be able to locate the electrical ribbon that connect the LCD screen to the device.
- You will also be able to lift the LCD screen away from the motherboard cover as picture in image 3. It will still be attached via electrical ribbon but can be moved to the side so you can access the clip underneath.

Step 10



- With the screen off to the side, and the horizontal electrical ribbon attached to it out of the way, gently lift the vertical electrical transducer ribbon to expose the salmon colored clip holding the horizontal ribbon in place.

Step 11



- Pull the clip away from the horizontal electrical ribbon to unlock it.
- Gently pull the horizontal electrical ribbon out of the clip to remove the LCD screen completely. Go slowly so you do not rip the ribbon or damage the clip or exposed motherboard beneath it.

To reassemble your device, follow these instructions in reverse order.