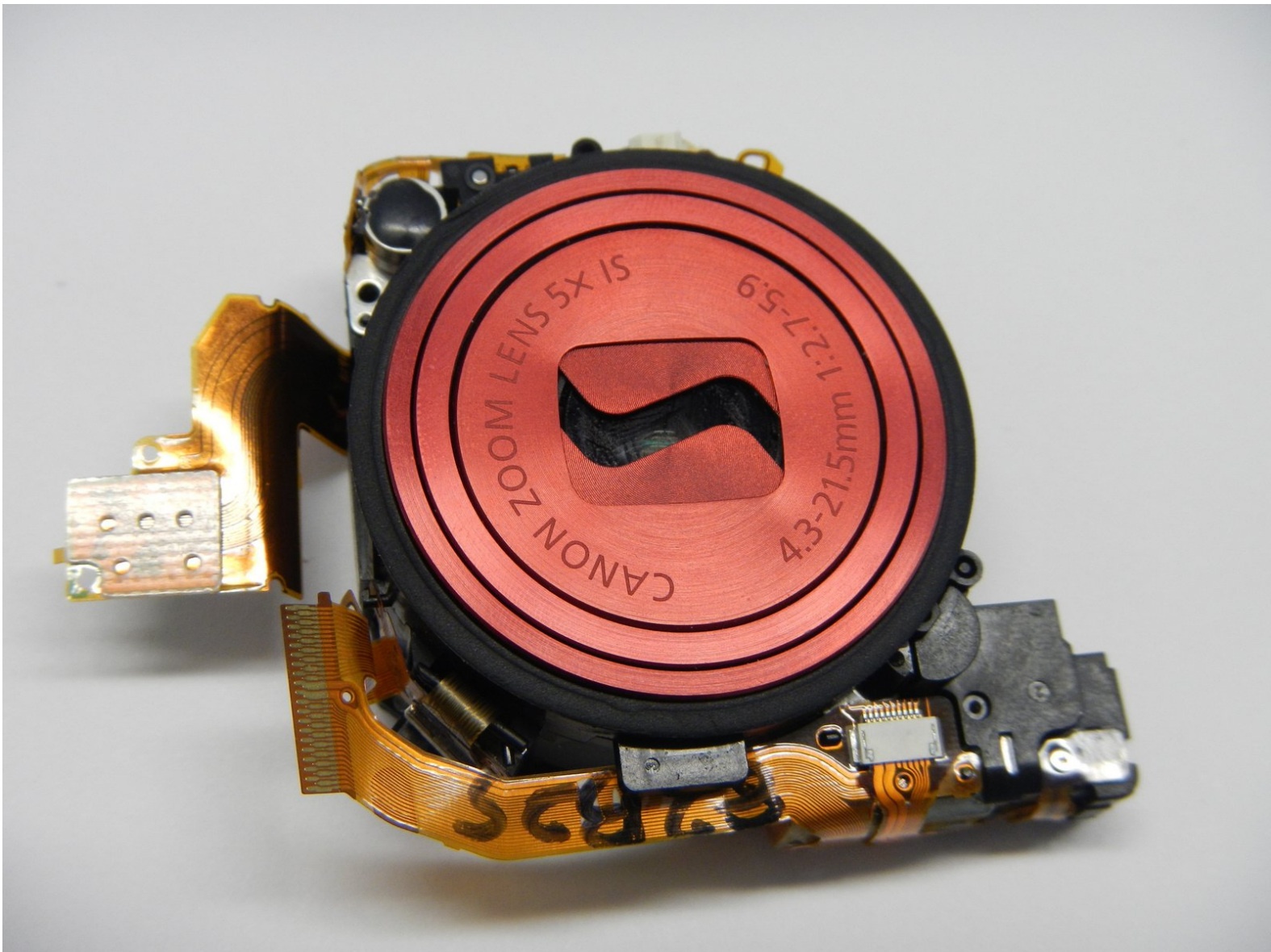




Canon PowerShot ELPH 300HS Lens Zoom Unit Replacement

This guide shows you how to repair or replace the lens zoom unit on your Canon PowerShot ELPH 300HS.

Written By: Kathryn Van Susante



INTRODUCTION

Before you get started, make sure you are working in a dust-free environment.

It is also advisable that you have adequate space around you as there are a lot of small parts.

You will not need any special skills for this guide, as everything is done using basic tools.



TOOLS:

- [Phillips #00 Screwdriver](#) (1)
- [Spudger](#) (1)




PARTS:

- [Canon replacement lens zoom unit for PowerShot elph 300HS](#) (1)

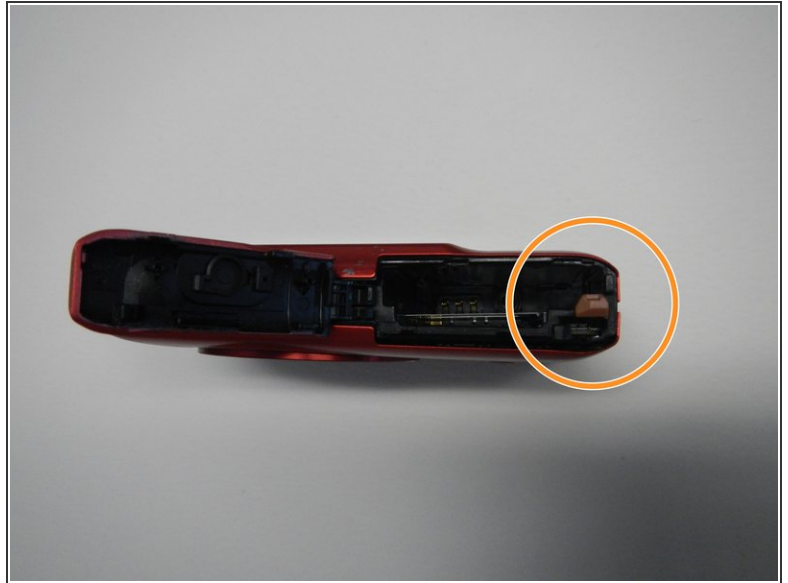
Step 1 — Safety First



 Before you begin taking apart your device, the first, and MOST IMPORTANT STEPS are to:

- Turn off your camera.
- Remove the battery to prevent risk of shock.

Step 2 — Remove the Battery



- Turn off your camera by pressing the power button, located on the top-center of the device.
- Locate the battery door on the bottom right area of the camera case.
- Place your finger firmly on the black rubber pad on the battery door and slide the door to the right to open it.
- Locate the orange battery release button beneath the battery door.
- Slide the battery release button downward to release the battery.

Step 3 — Left Side Screws



- ⚠ Be careful when removing screws, as they are stripped easily.
- Remove the two screws located on the left side of the camera case, using the Phillips screwdriver #00 (2.0 mm).

Step 4 — Bottom Screws



- Remove the two screws on the bottom of the camera located near the battery door (Phillips #00 screwdriver) (4.0 mm).

Step 5 — Right Side Screws



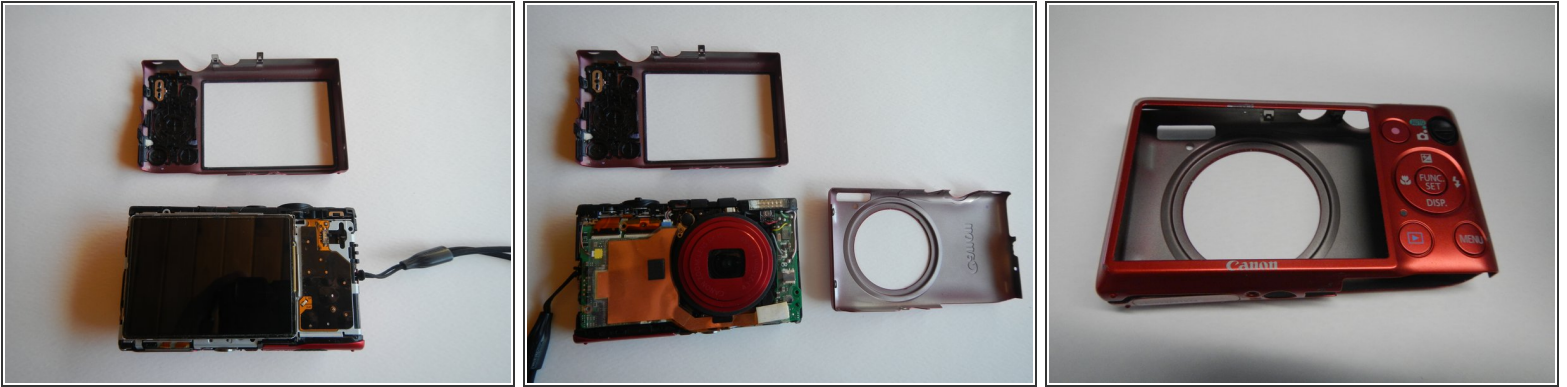
- Remove the screw located on the lower right side of the camera case (Phillips #00 screwdriver) (4.0 mm).
- Remove the HDMI A/V out port cover located on the upper right side of the camera.
- Remove the screw located just beneath the port cover removed in step 2. (Phillips #00 screwdriver) (2.0 mm).

Step 6



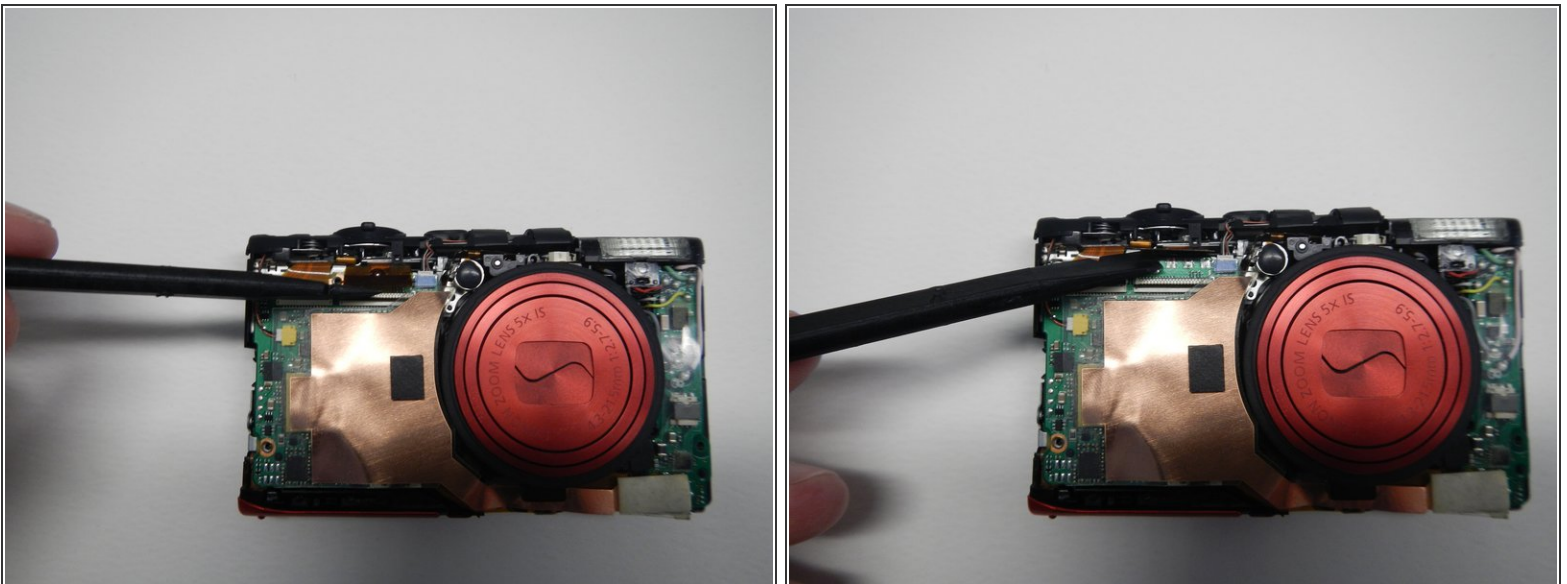
- Remove the back portion of the camera case to reveal the screw located on the top of the case.
- Remove the screw from the top of camera case, located next to the shutter button (Phillips #00 screwdriver) (1.5 mm).

Step 7 — Remove the Case from the Camera



- Carefully pry the case apart at the seam, using your fingers.
- ⚠ Be careful not to over bend the small metal projections located along the seams. These aid in holding the case together.
- ⚠ Be careful not to allow dust or other particles to settle inside of the camera while the case is detached. This can cause functional issues in the future.

Step 8 — LCD Screen



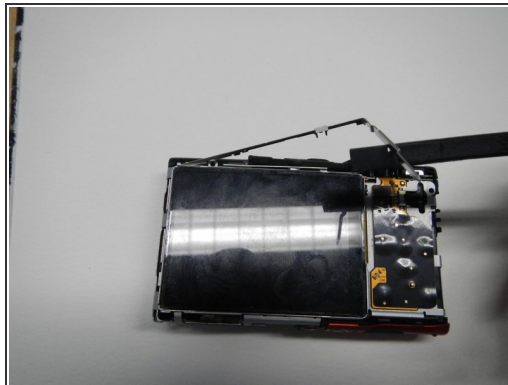
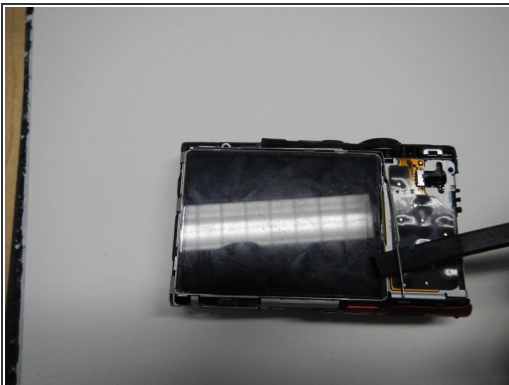
- Disconnect the copper ribbon next to the blue port on the motherboard

Step 9



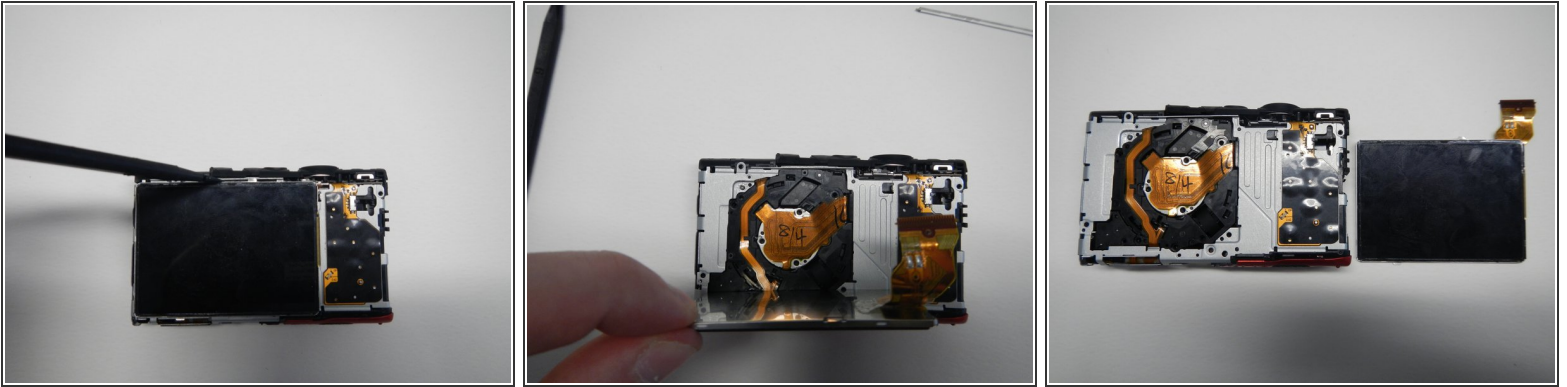
- To remove ribbon cable, gently lift the black tab with a flat head screwdriver. Lift from the top of the camera towards the bottom. This releases the cable. Be gentle, as the cables are fragile.

Step 10



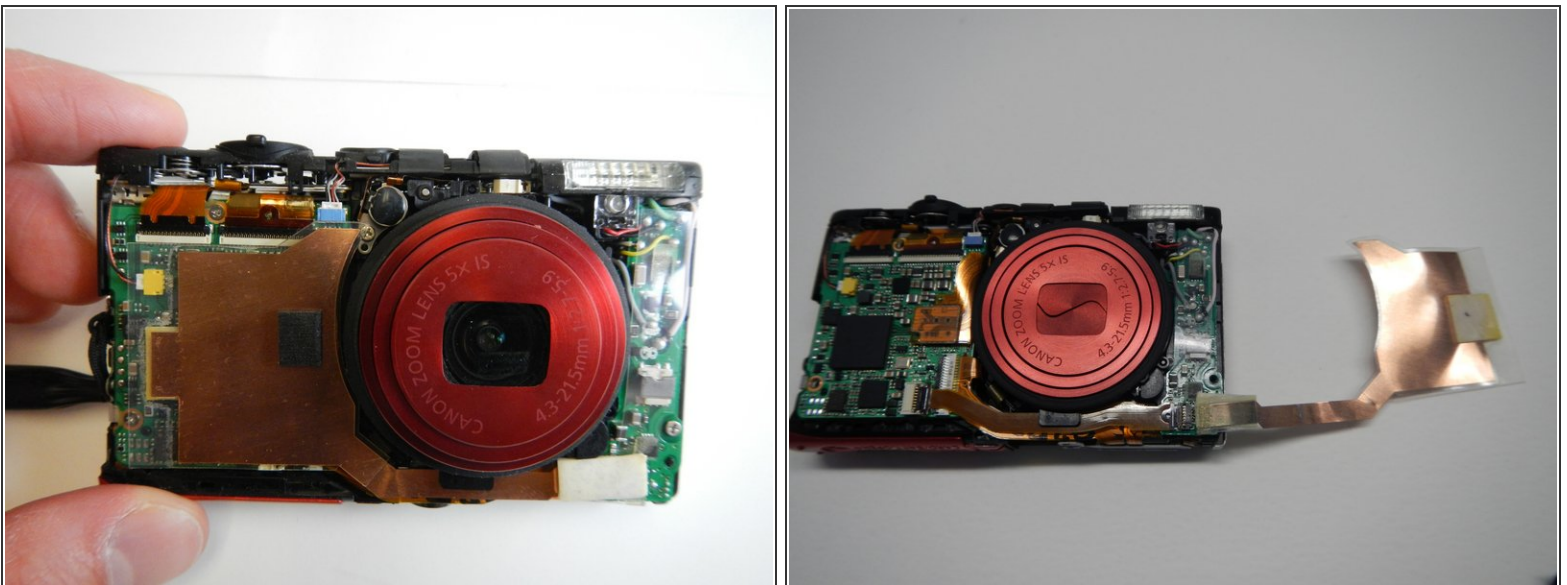
- Remove the L shaped bracket around the top and right side of the LCD screen

Step 11



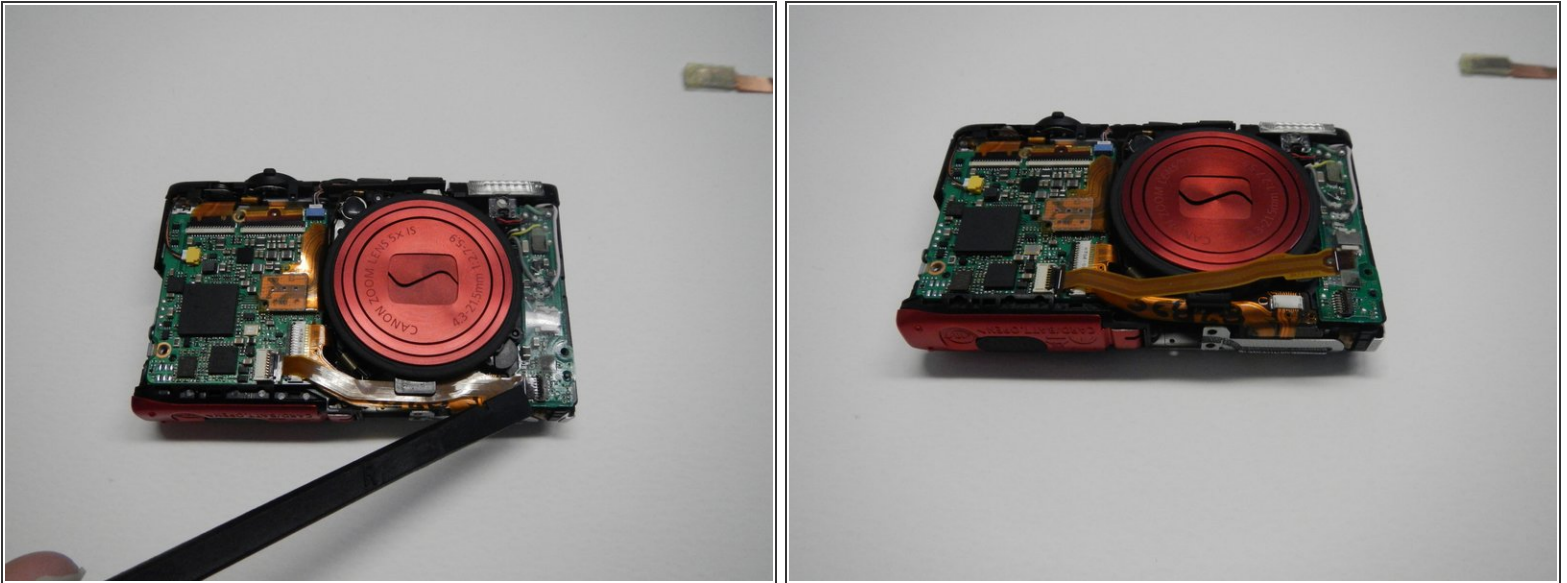
- Insert the flat side of the spudger tool carefully on the top of the LCD screen and lift the screen free

Step 12 — Flash



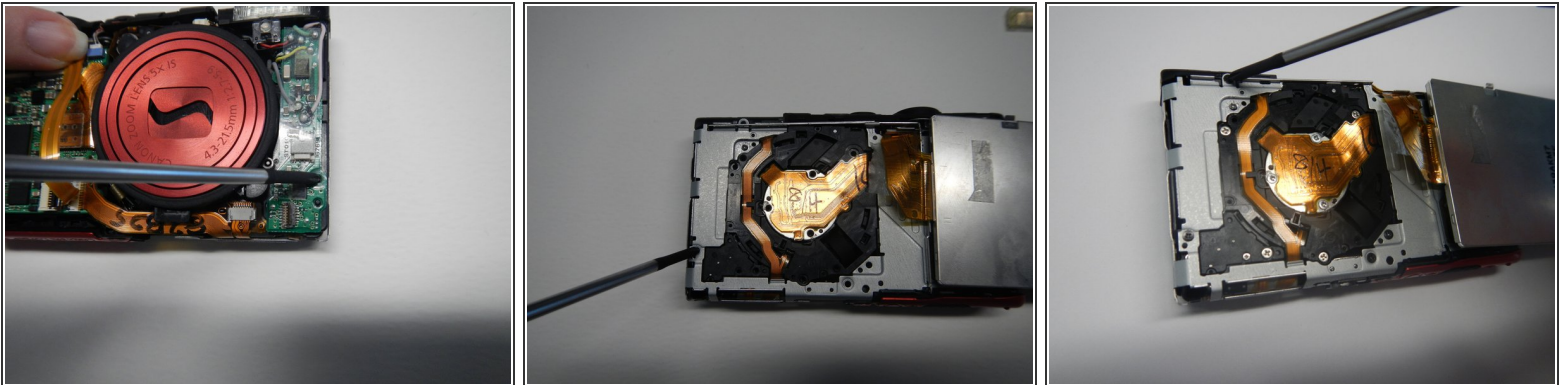
- Carefully remove the large copper ribbon on the front of the camera (attached with adhesive pads)

Step 13



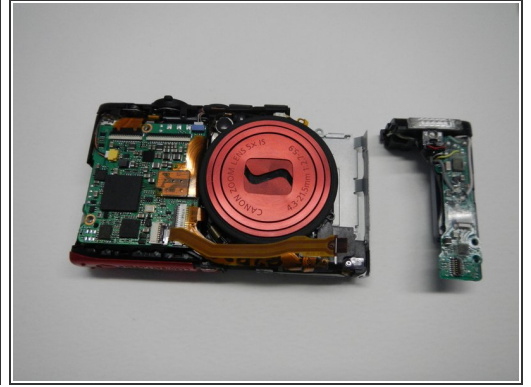
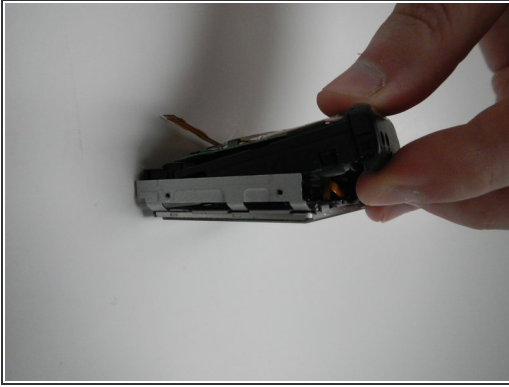
- Remove the ribbon wire attached at the bottom right corner of the front of the camera. You do NOT need to remove this from the motherboard.

Step 14



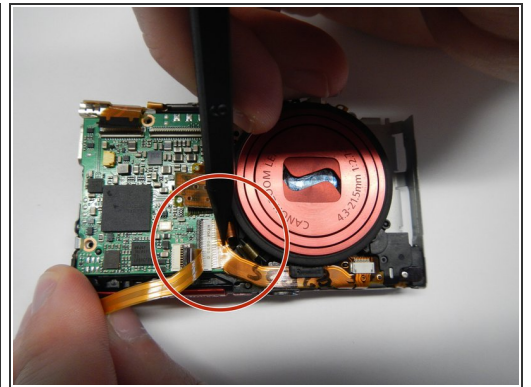
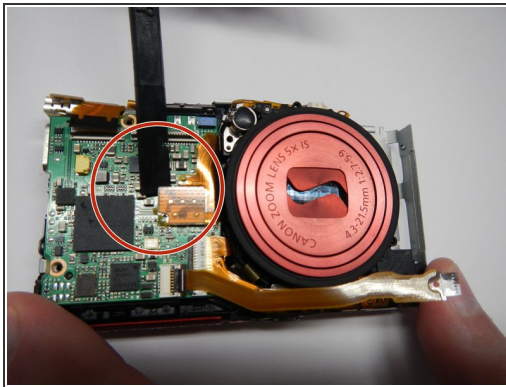
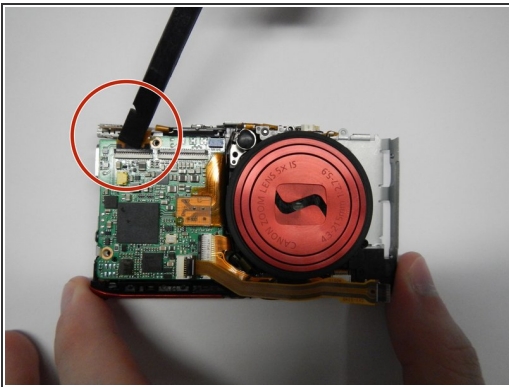
- Unscrew the screw on the circuit board on the front of the camera (length 3.5 mm)
- Unscrew the screw on the lower left part of the silver part of the back under where the LCD screen was.
- Unscrew the screw on the top of the silver part of the back

Step 15



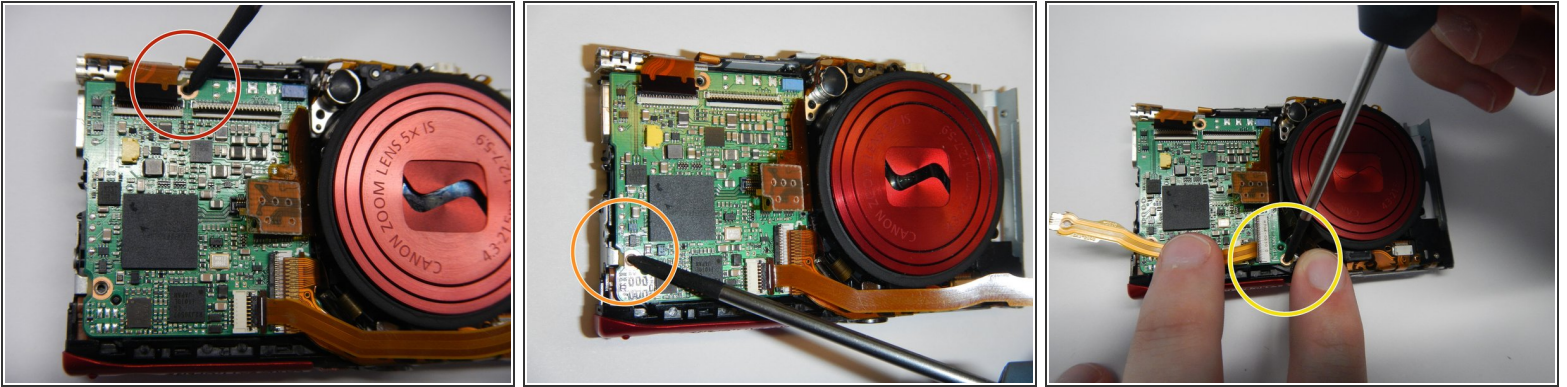
- Lift the flash housing up and forward from the top of the camera to carefully remove

Step 16 — Lens Zoom Unit



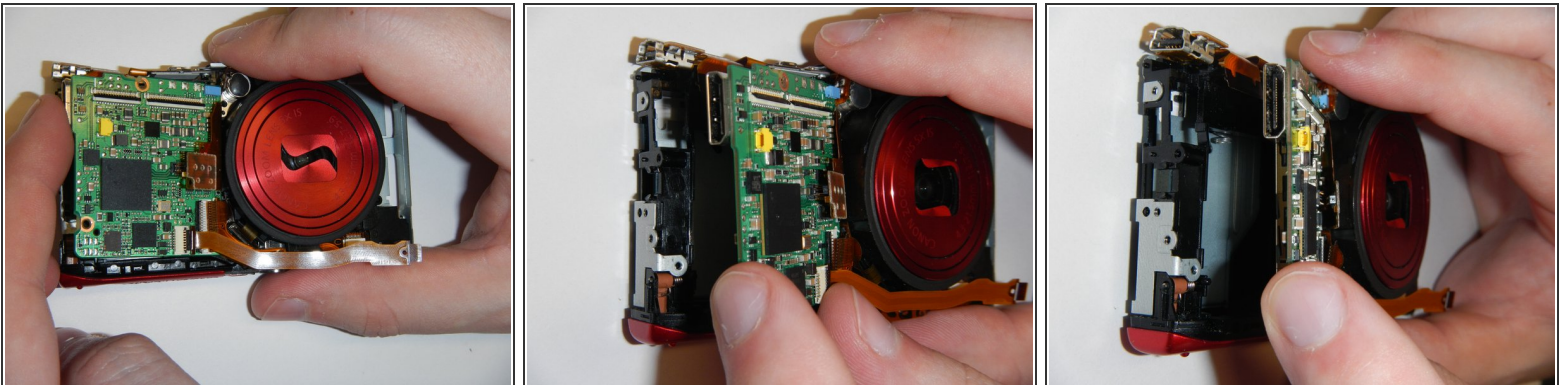
- Remove the top copper ribbon (for USB port) by gently prying it from the motherboard with the spudger.
- Remove the center copper ribbon (for CCD) using the same method as above.
- Remove the lower right copper ribbon as in step one.

Step 17



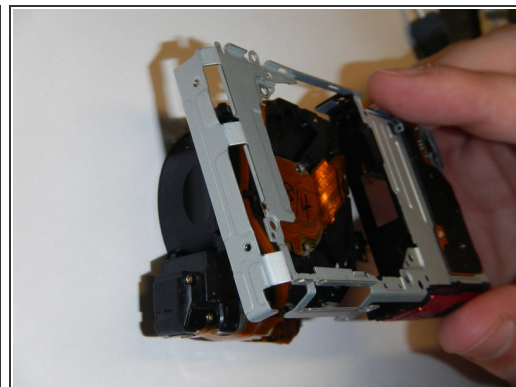
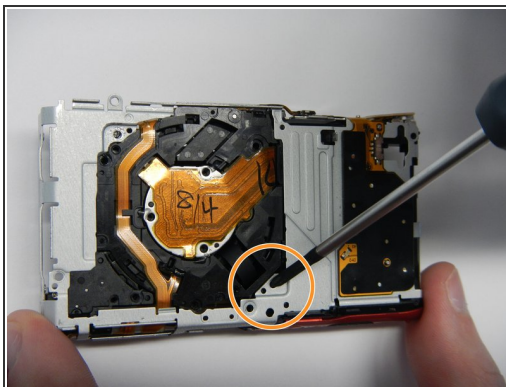
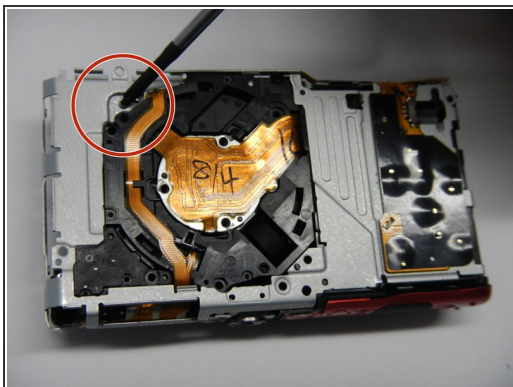
- Remove the top screw on the motherboard. (2.5 mm).
- Remove the screw in the bottom left of the motherboard. (2.5 mm).
- Remove the screw located underneath the bottom copper ribbon. (3.0 mm).

Step 18



- Remove the motherboard from the frame by gently grasping the outside edge and pulling away.

Step 19



- On the back of the case, remove the top left corner screw. (3.0 mm).
- Remove the bottom right corner screw. (3.0 mm).
- Lift the silver frame away from the zoom lens to separate the two.

To reassemble your device, follow these instructions in reverse order.