



# Canon PowerShot ELPH 310 HS External Panels Replacement

This guide will remove the external panels of the Canon PowerShot 310 HS camera.

Written By: Kadie Aldridge



## INTRODUCTION

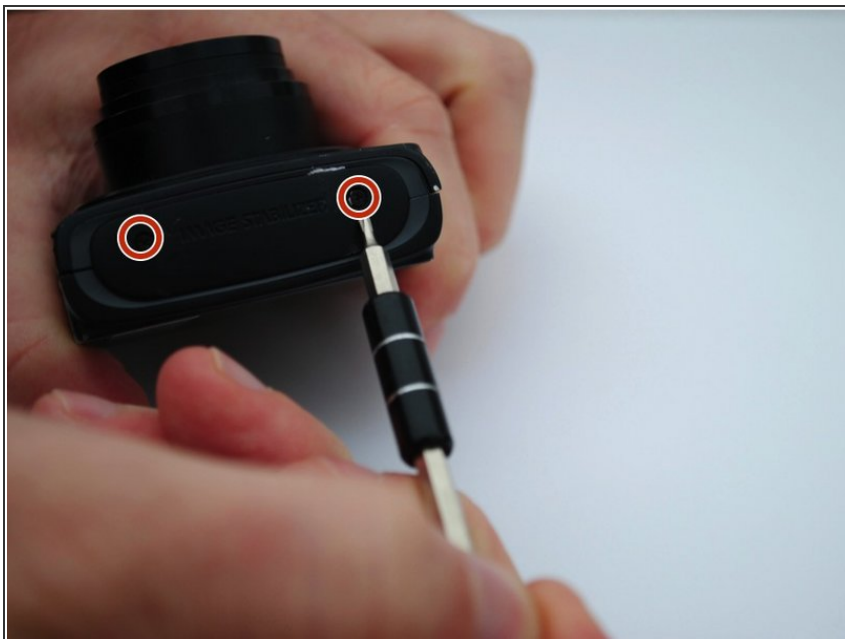
The Canon PowerShot ELPH 310 HS may experience some damage to the outer casings. If you need to remove the outer casings to replace another component, or need to replace the outer casing, follow this guide.

---

### TOOLS:

- [Phillips #000 Screwdriver](#) (1)
-

## Step 1 — External Panels



- Use the Phillips #000 screwdriver from the iFixit tool kit to unscrew the two image stabilizer panel's 2 mm Phillips head screws.
- Using your hands, remove the image stabilizer panel.

## Step 2



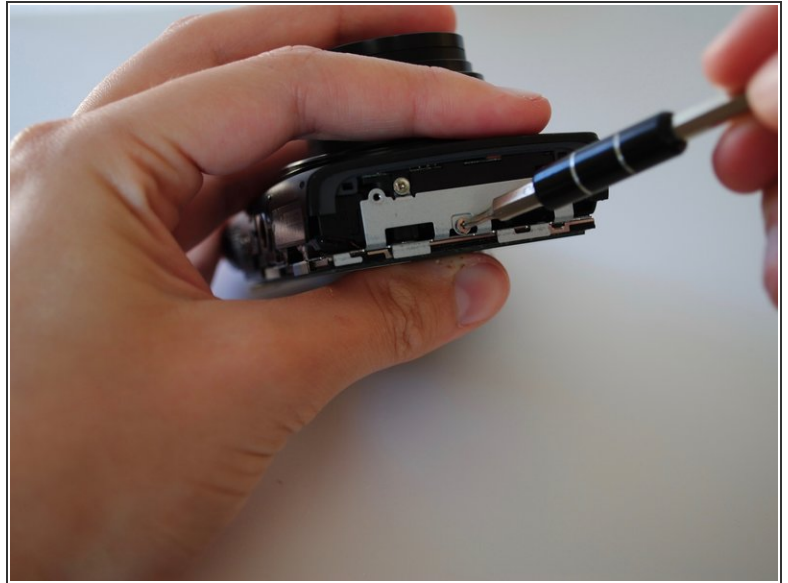
- Unscrew the two 4 mm Phillips head screws from the bottom side of the camera.

## Step 3



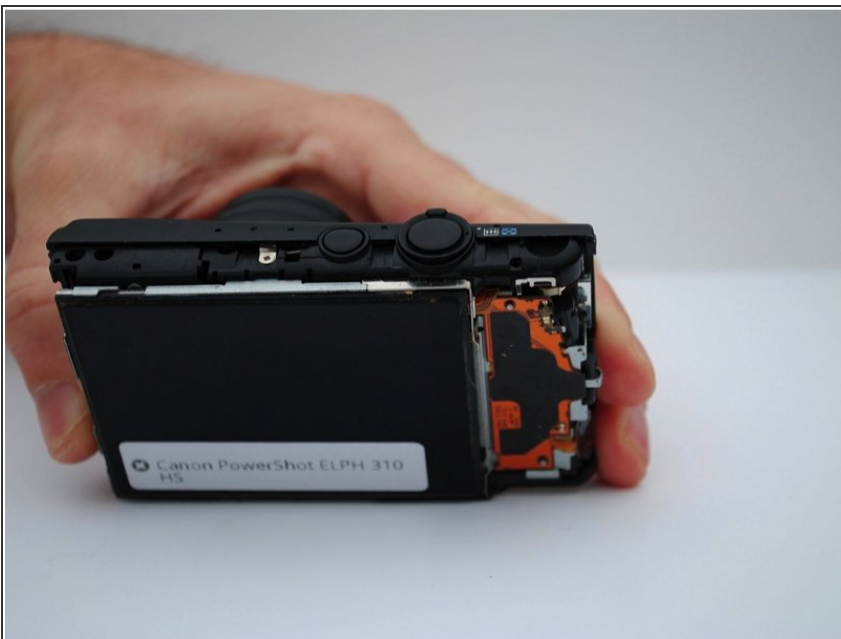
- Using your hand, open the battery portal located on the bottom left of the camera. The screw is in the bottom left of the battery portal.
- Unscrew the hidden 4mm Phillips head screw inside the battery portal.

## Step 4



- Remove the HDMI side panel with your hands.
- Unscrew the four 4 mm Phillips head screws from the inside of the camera.

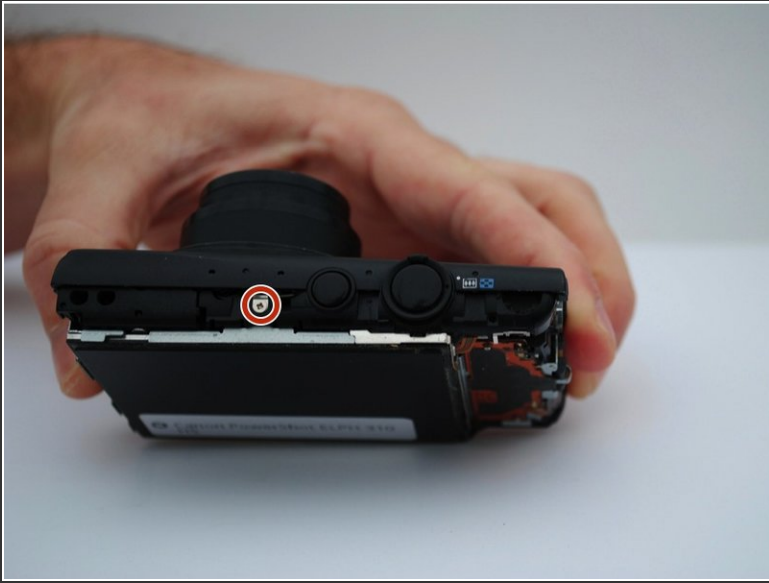
## Step 5



- The back side of the camera should pop off or be removed by hand.



## Step 6



- Unscrew the one 3 mm Phillips head screw on the top of the camera.

## Step 7



- Manually remove the front panel from the camera.

To reassemble your device, follow these instructions in reverse order.