



Canon PowerShot ELPH 310 HS Lens Replacement

Replace your lens to improve camera function and picture quality.

Written By: Sarah Van Putten Vink



INTRODUCTION

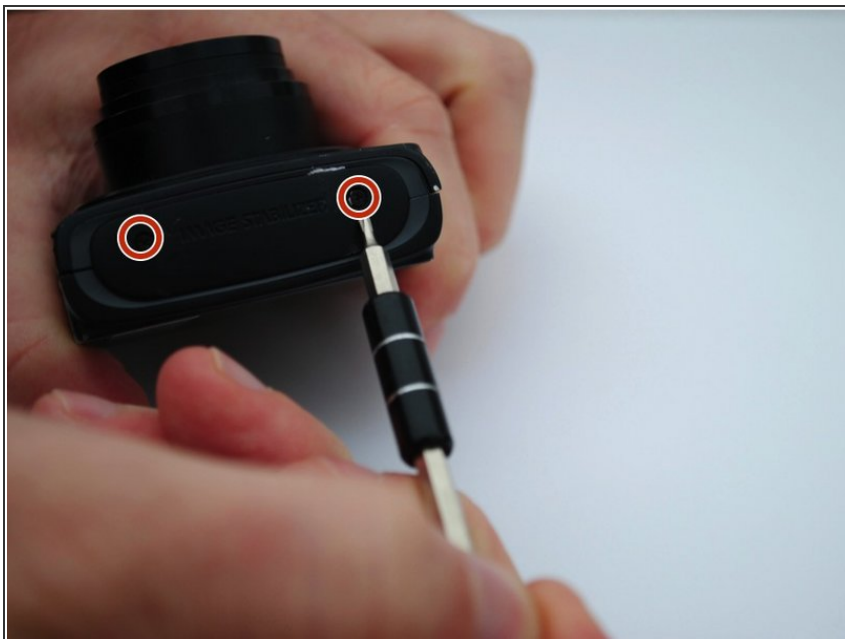
The Cannon PowerShot ELPH 310 HS may experience problems with the lens. The lens may be stuck inside the camera, or will not retract back into the camera. This guide is to assist in the replacement of the lens.



TOOLS:

- [Spudger](#) (1)
 - [Phillips #000 Screwdriver](#) (1)
-

Step 1 — External Panels



- Use the Phillips #000 screwdriver from the iFixit tool kit to unscrew the two image stabilizer panel's 2 mm Phillips head screws.
- Using your hands, remove the image stabilizer panel.

Step 2



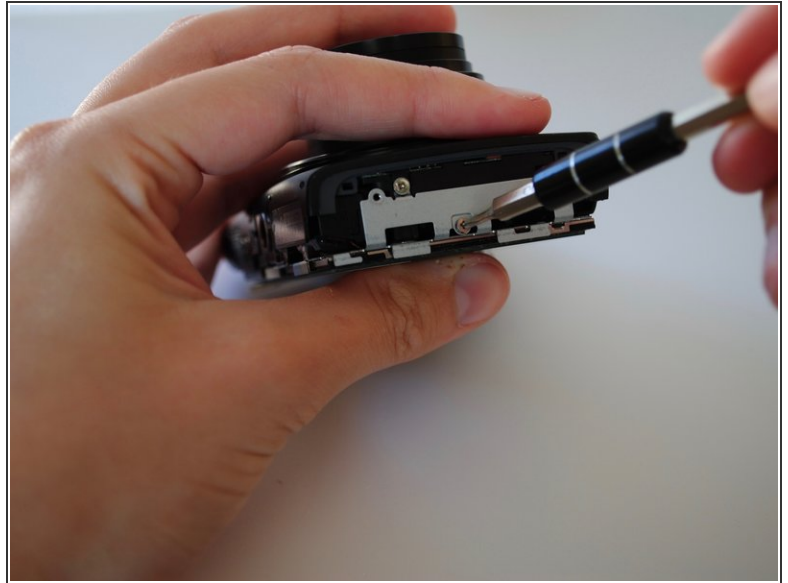
- Unscrew the two 4 mm Phillips head screws from the bottom side of the camera.

Step 3



- Using your hand, open the battery portal located on the bottom left of the camera. The screw is in the bottom left of the battery portal.
- Unscrew the hidden 4mm Phillips head screw inside the battery portal.

Step 4



- Remove the HDMI side panel with your hands.
- Unscrew the four 4 mm Phillips head screws from the inside of the camera.

Step 5



- The back side of the camera should pop off or be removed by hand.

Step 6



- Unscrew the one 3 mm Phillips head screw on the top of the camera.

Step 7



- Manually remove the front panel from the camera.

Step 8 — LCD Screen



- Using your hands, remove the metal piece (surrounding the right side of the screen) from the right side of the camera.

Step 9



- Using your hands, lift up the screen.

⚠ The screen is fragile!

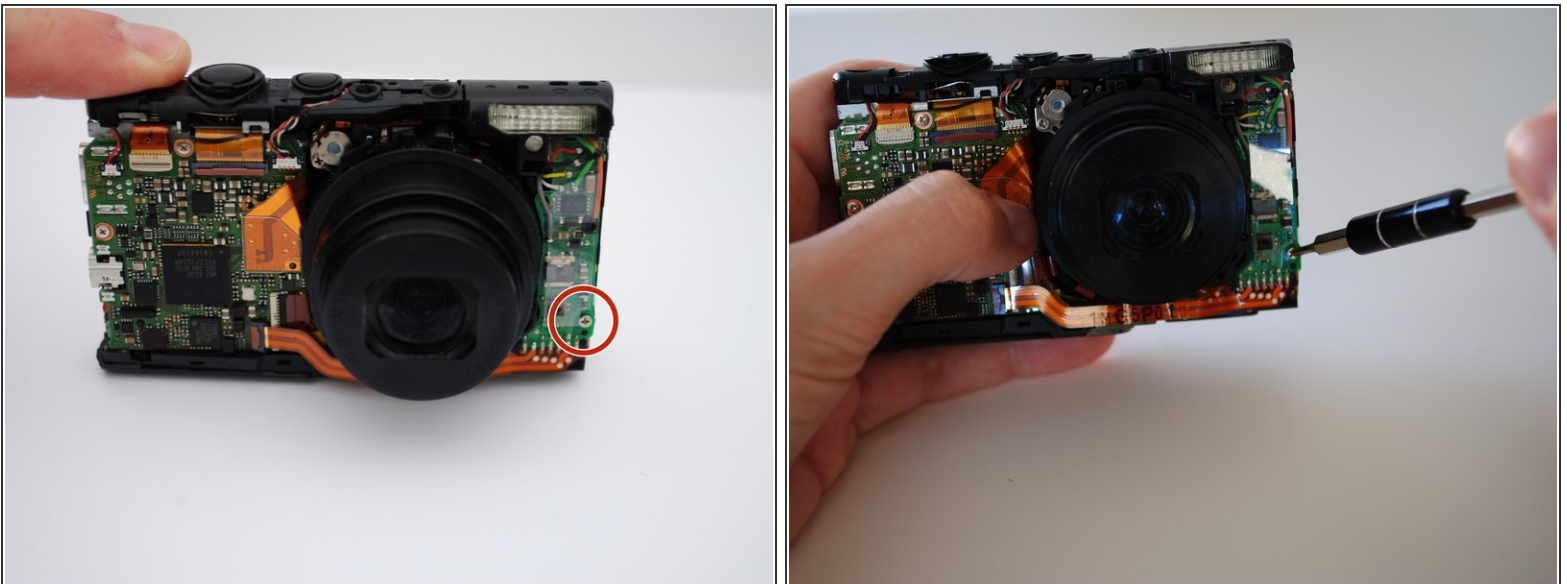
Step 10



⚠ The strip tears easily!

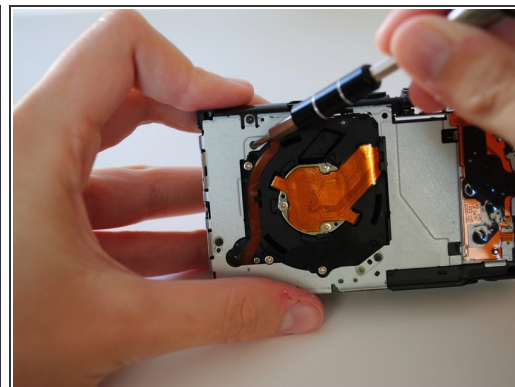
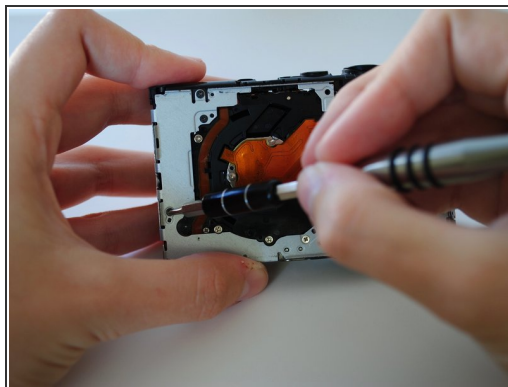
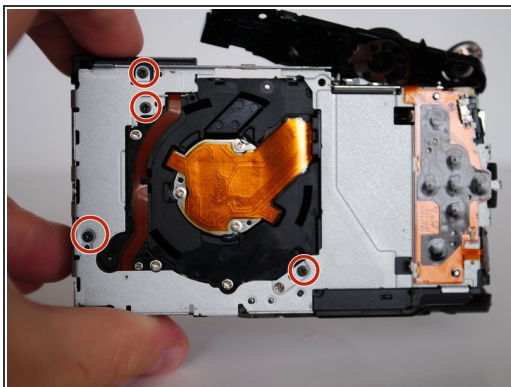
- Manually lift the shutter button plate and remove the white ZIF connector, which is the white clasp underneath.
- On the front of the camera, using your fingers, undo the orange ribbon from the gray clasp and pull the ribbon through the shutter deck.

Step 11 — Lens



- On the front motherboard, unscrew the one bottom right 3 mm Phillips head screw.

Step 12



- Unscrew the four 3 mm Phillips head screws attached to the metal casing on the back of the camera, behind where the LCD screen once was.

Step 13



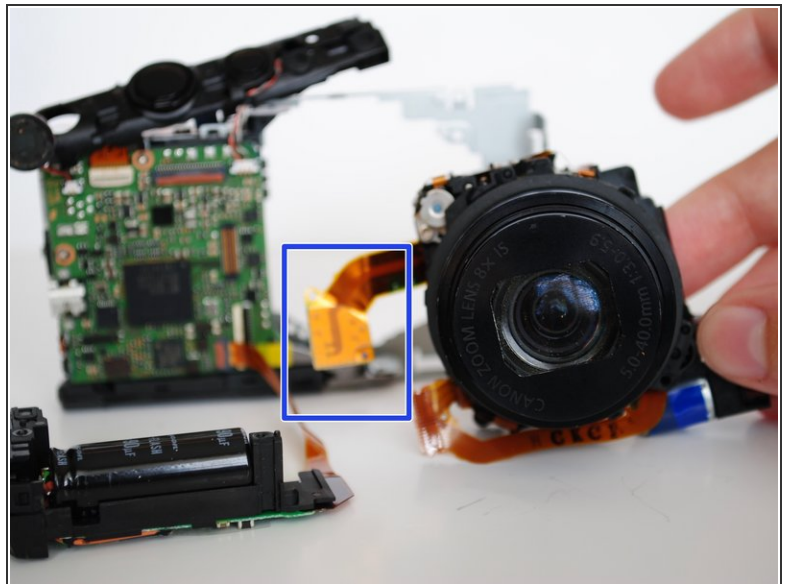
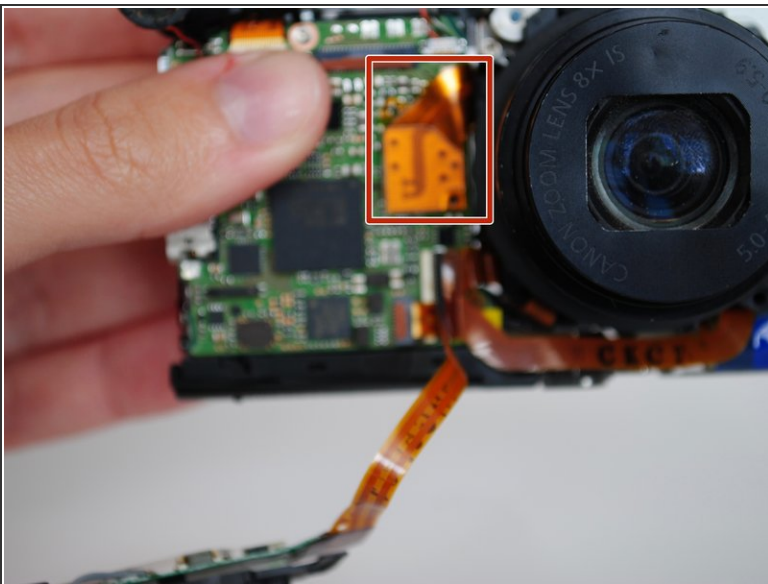
- Using your hands, carefully lift the flash housing up and remove it from the area.

Step 14



- Using a plastic spudger, remove the bottom front ZIF connector.

Step 15



- Using your hands, carefully remove the center ribbon.
- Manually remove the lens.

To reassemble your device, follow these instructions in reverse order.