

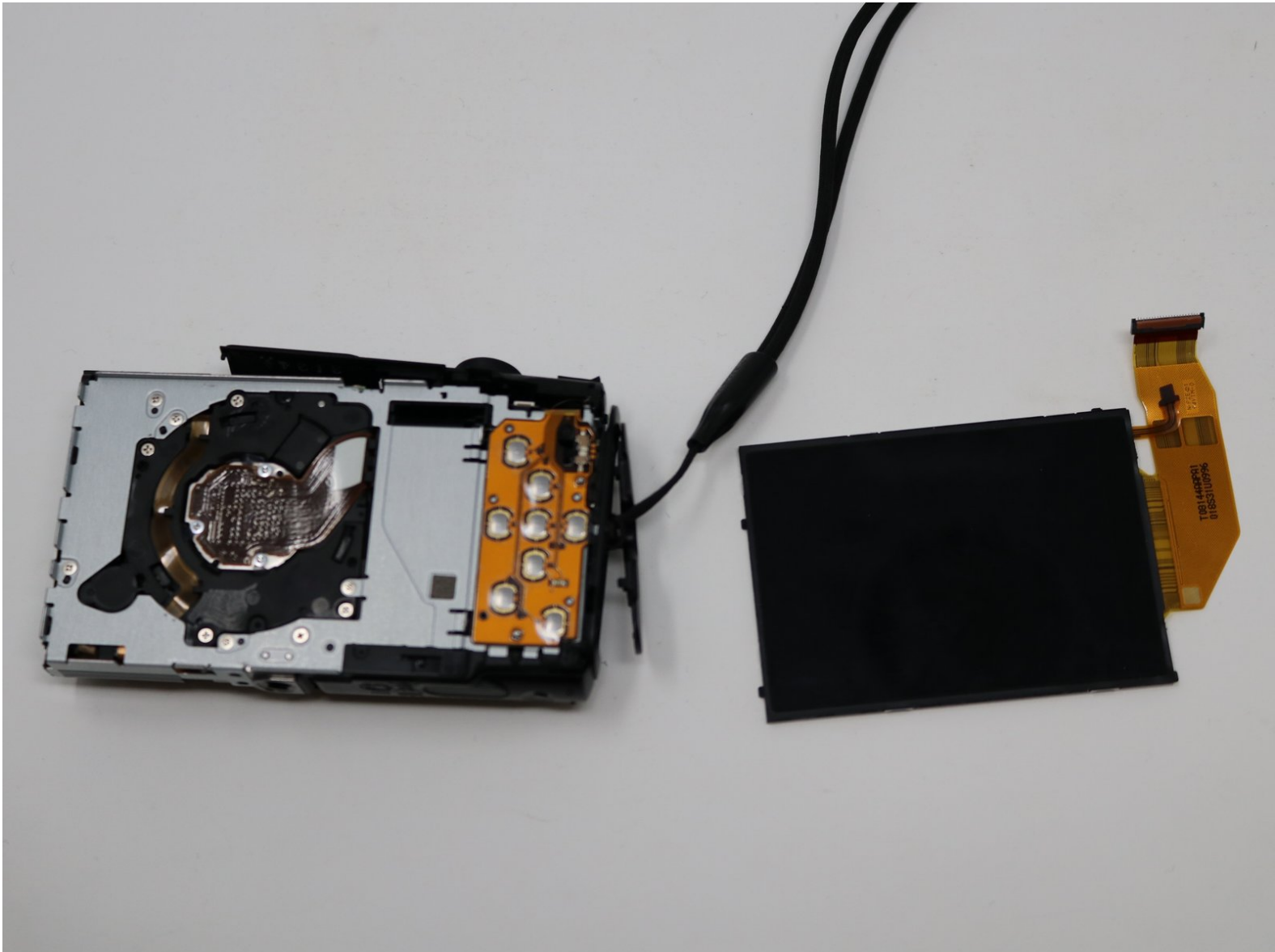


Canon PowerShot ELPH330 HS Camera Repair

LCD Screen Replacement

Use this guide to replace the LCD screen in your Canon PowerShot ELPH330 HS Camera.

Written By: Michelle Ngo



INTRODUCTION

If you're experiencing problems with your screen, consider reading this guide. This guide will show you how to replace the LCD screen in your Canon PowerShot ELPH 330 HS.



TOOLS:

- [Phillips #00 Screwdriver](#) (1)
- [Phillips #000 Screwdriver](#) (1)
- [Spudger](#) (1)



PARTS:

- [Canon Replacement LCD for PowerShot ELPH 330 HS](#) (1)

Step 1 — LCD Screen



- Turn off your camera.
- Remove the battery.
 - Slide the battery door open with the rubber pad on the bottom right side of the camera.
 - Remove the battery by pushing down on the release button.

Step 2



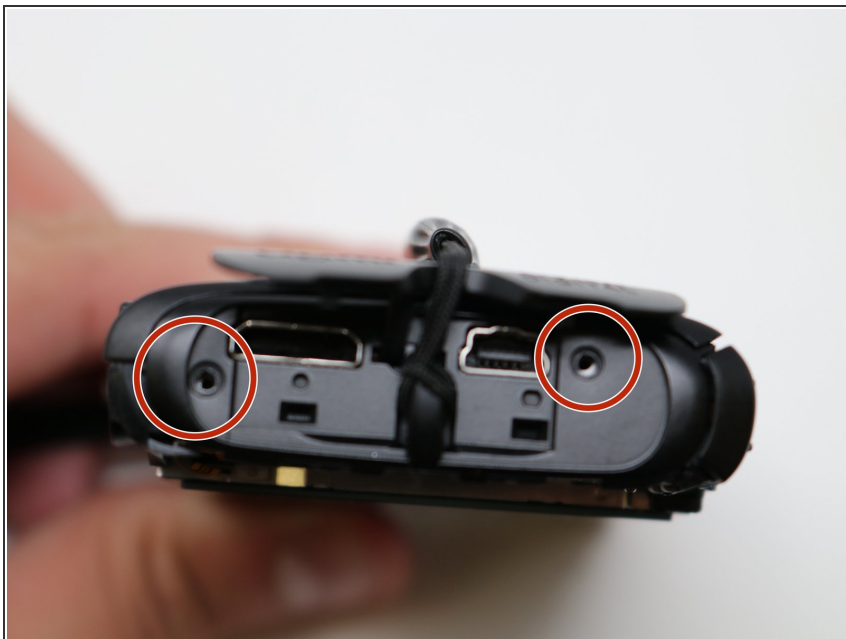
- Remove the two screws on the left side with a Phillips #00 screwdriver.

Step 3



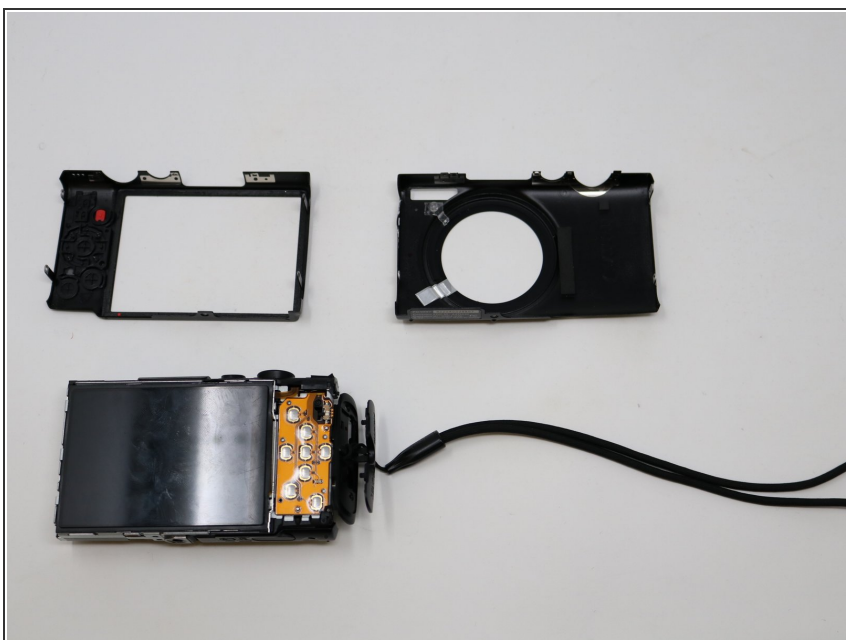
- Remove the two screws on the bottom of the camera with a Phillips #00 screwdriver.

Step 4



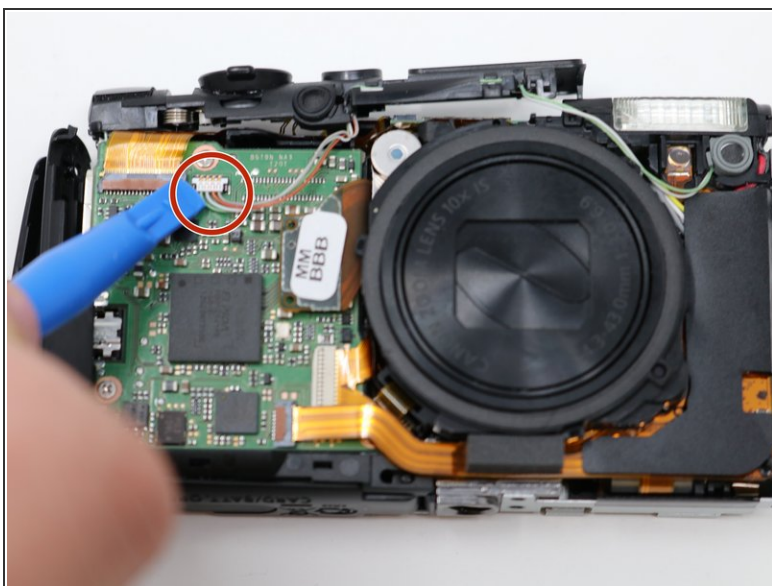
- Remove the two screws on the right side with a Phillips #00 screwdriver.

Step 5



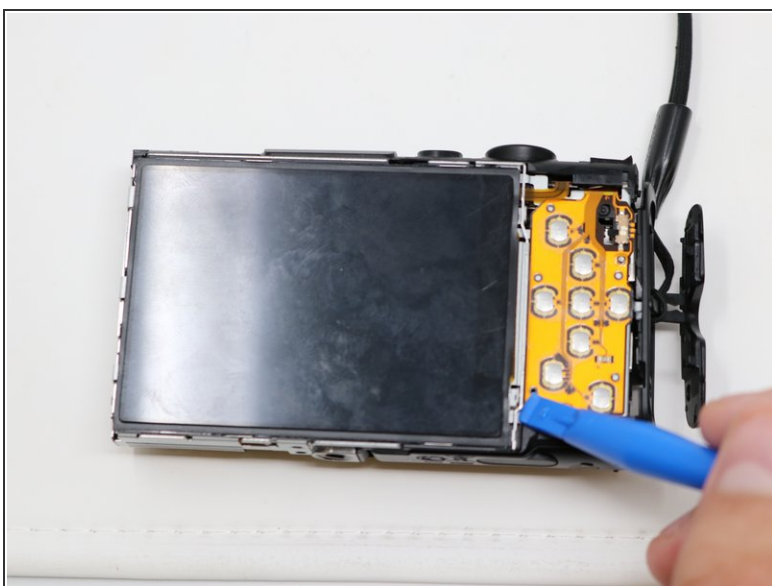
- Using your fingers, carefully pry the case apart at the seam.

Step 6



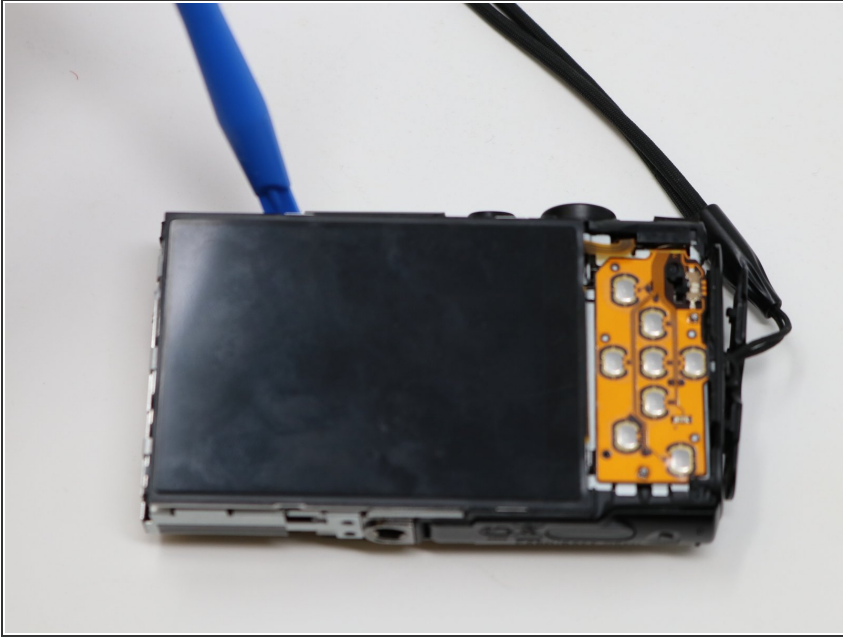
- Flip the camera over so that the lens is facing you.
- Disconnect the highlighted port from the motherboard.

Step 7



- Remove the bracket around the LCD screen.

Step 8



- Using the spudger, carefully pry the top to remove the LCD screen.

To reassemble your device, follow these instructions in reverse order.