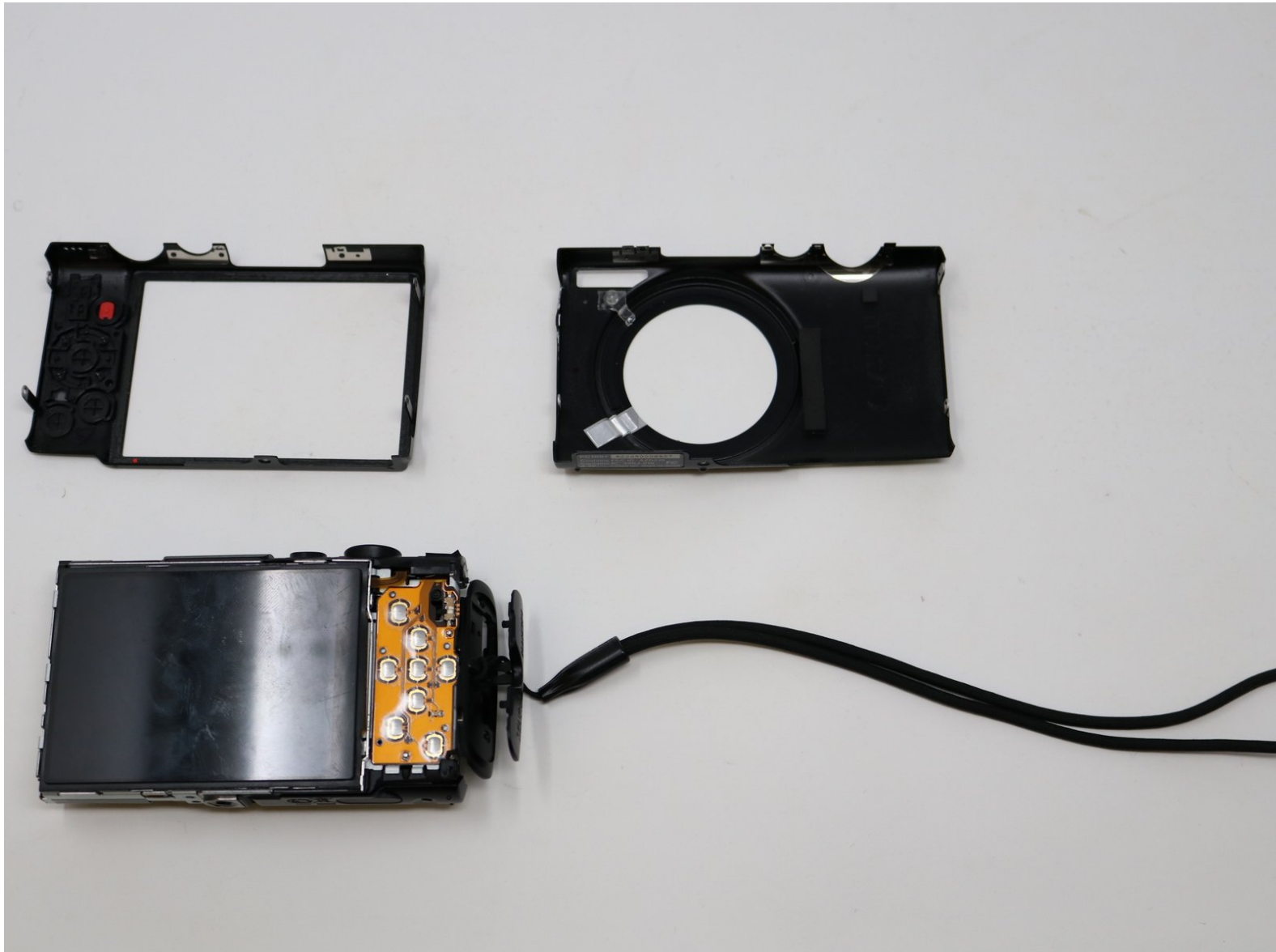




Canon PowerShot ELPH330 HS Camera Case Replacement

Use this guide to replace the case in your Canon PowerShot ELPH330 HS Camera.

Written By: Michelle Ngo



INTRODUCTION

Is your camera case cracked or broken? Are there dust particles and dirt getting into your camera? You may want to consider replacing the case of your camera if the symptoms mentioned above are present.

Before starting your replacement for the canon case, make sure to be in a space that is dust-free and very open. During this replacement, there will be many small screws used.



TOOLS:

- [Phillips #000 Screwdriver](#) (1)
- [Phillips #00 Screwdriver](#) (1)
- [Spudger](#) (1)



PARTS:

- [Canon PowerShot ELPH 330HS case](#) (1)

Step 1 — Camera Case



- On the top-center of your device, turn off the camera by pressing the power button.
- Put your finger on the battery door and slide the battery door to the right which will then open the door.
- Push the release button downward and it will release the battery.

Step 2



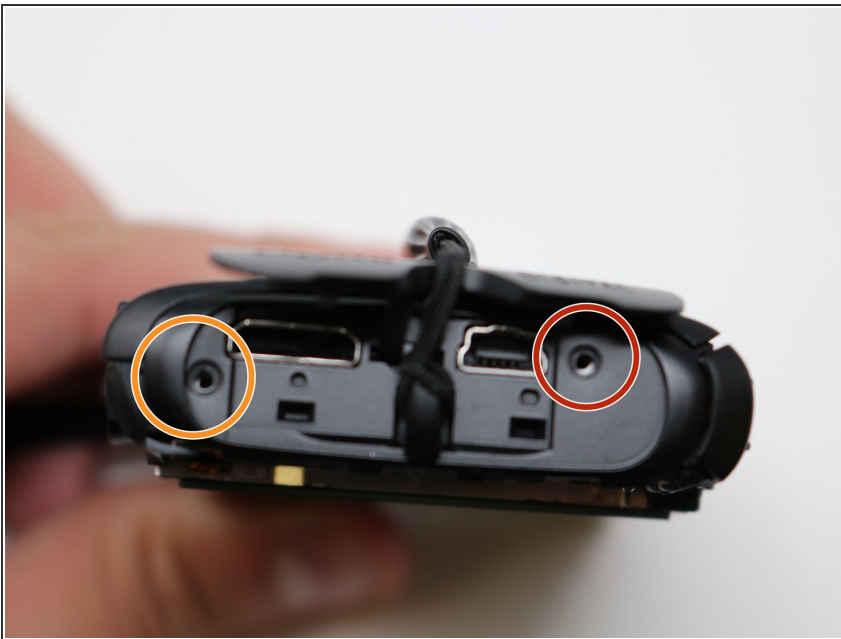
- Use the Phillips #00 screwdriver to remove the two screws.

Step 3



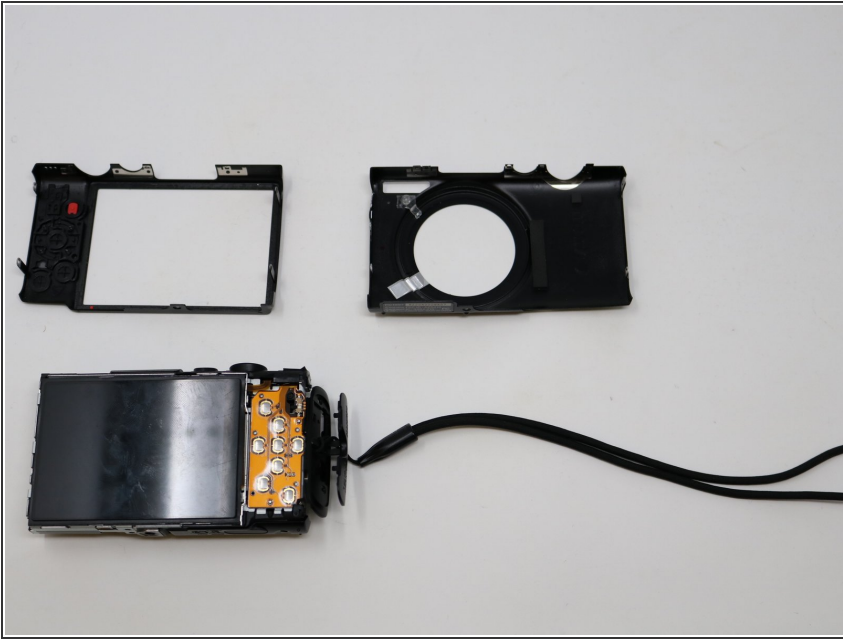
- Remove two more screws using the Phillips #00 screwdriver.

Step 4



- On the lower right side of the camera case, remove the single screw using Phillips #00 screwdriver.
- On the upper right side of the camera, remove the HDMI A/V out port.
- Beneath the port cover, remove the screw using the same Phillips #00 screwdriver.

Step 5



- Using your fingers, carefully pry the case apart at the seam.

== ==