



Canon PowerShot ELPH330 HS Camera Power/Shutter Button Panel Replacement

Use this guide to replace the power and shutter button panel in your Canon PowerShot ELPH330 HS Camera.

Written By: Michelle Ngo



INTRODUCTION

If you're experiencing problems with your camera turning on or the camera taking photos, consider replacing the power/shutter button panel in your camera. This guide will show you how to replace your damaged power button.



TOOLS:

- [Spudger](#) (1)
- [Phillips #00 Screwdriver](#) (1)
- [Phillips #000 Screwdriver](#) (1)



PARTS:

- [Canon replacement power button assembly for PowerShot ELPH 330HS](#) (1)

Step 1 — Power/Shutter Button Panel



- On the top-center of your device, turn off the camera by pressing the power button.
- Put your finger on the battery door and slide the battery door to the right to open it.
- Push the release button downward and it will release the battery.

Step 2



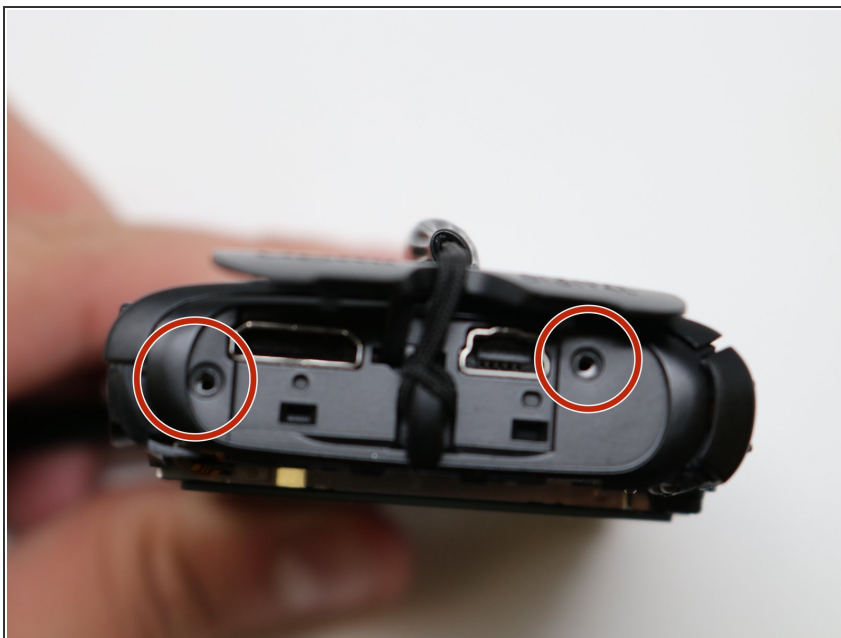
- Use the Phillips #00 screwdriver to remove the screws.

Step 3



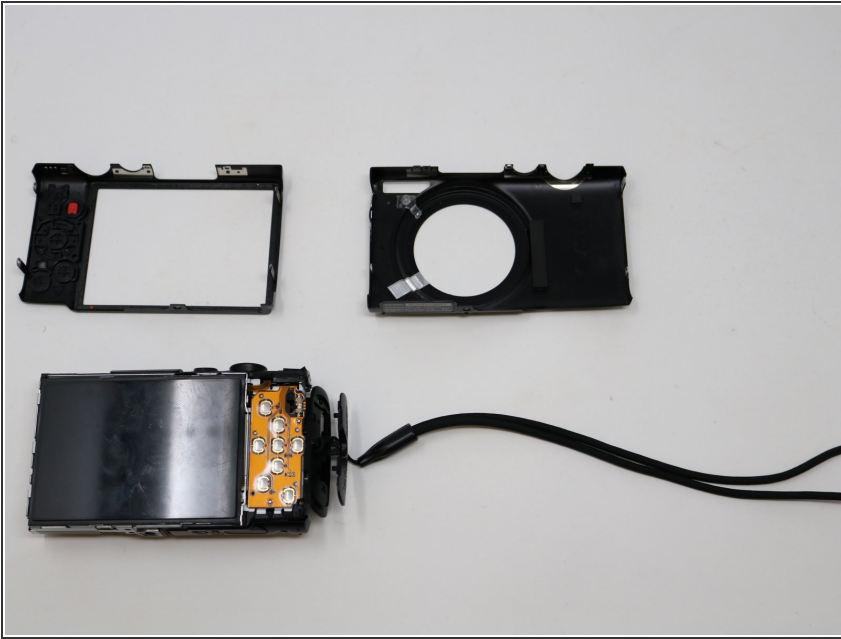
- Remove the two 4.0mm screws on the bottom of the camera located near the battery door using a Phillips #00 screwdriver.

Step 4



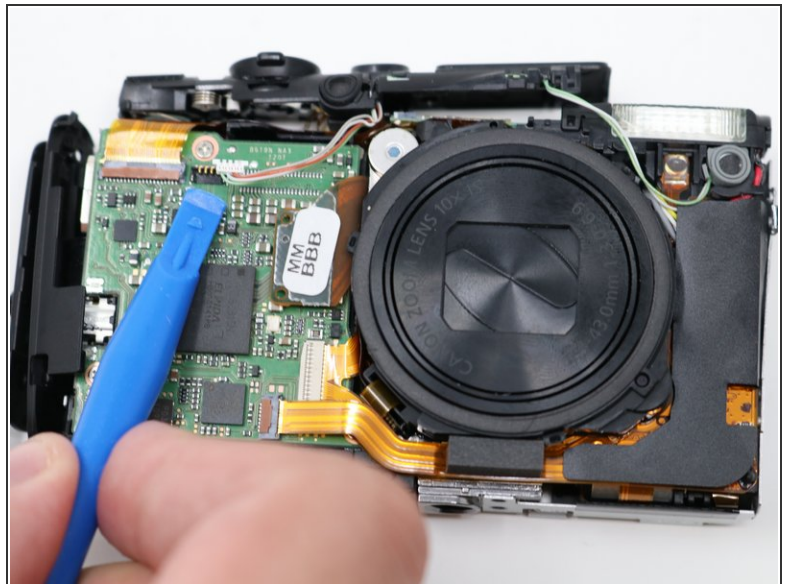
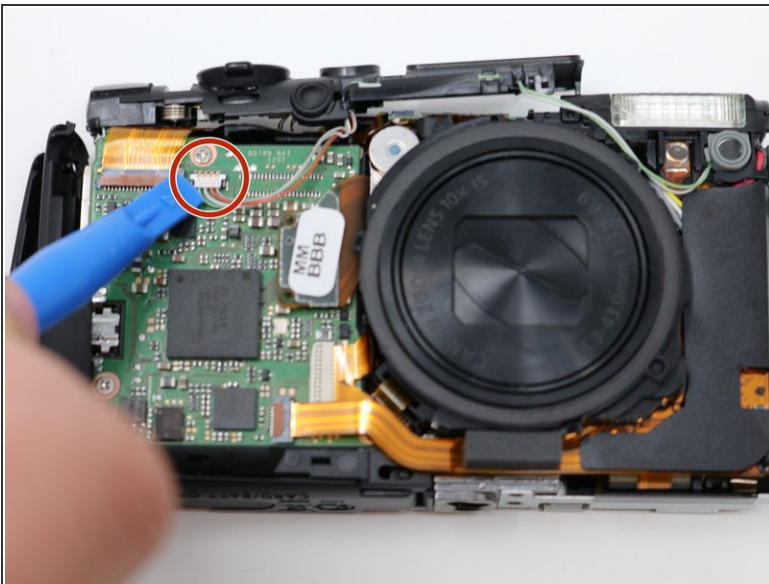
- At the bottom of the camera next to the battery door, remove two more screws using the Phillips #00 screwdriver.

Step 5



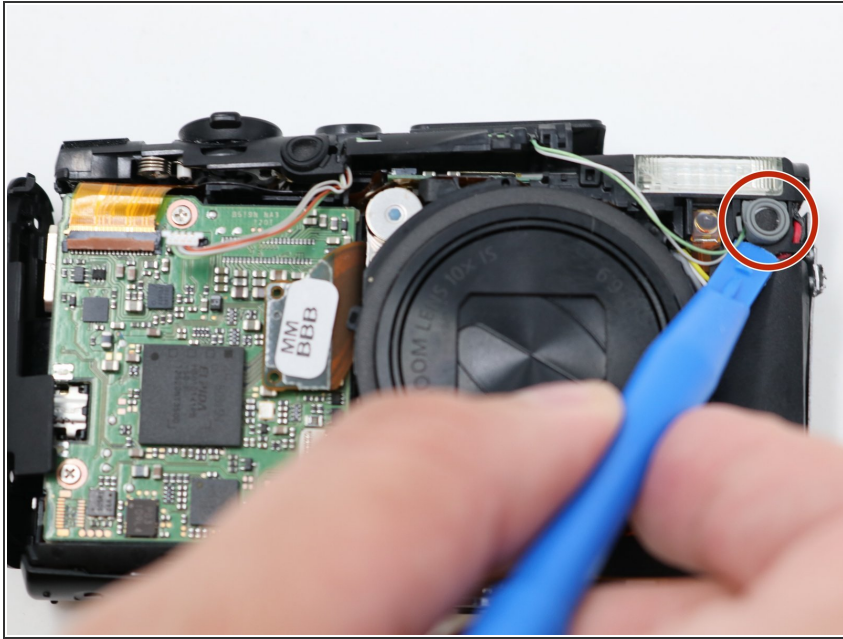
- To remove the back portion of the camera case, use your fingers to carefully pry the case apart at the seam.

Step 6



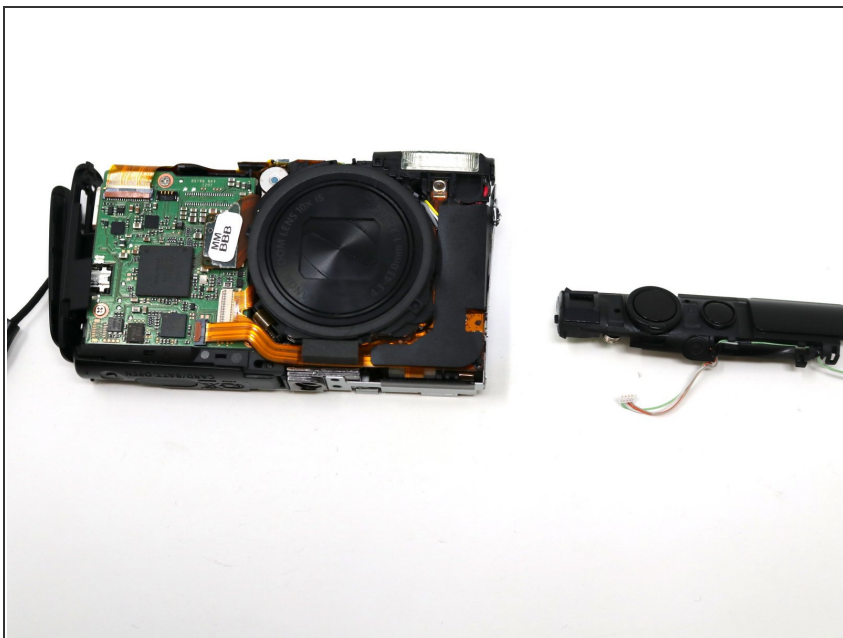
- On the motherboard there should be a white port. Using the spudger, disconnect it from the motherboard.

Step 7



- Follow the green and white wire. There is a gray piece of rubber holding the button into place. Remove it with the spudger.

Step 8



- Lift the panel off from the top of the camera with your hands.

To reassemble your device, follow these instructions in reverse order.