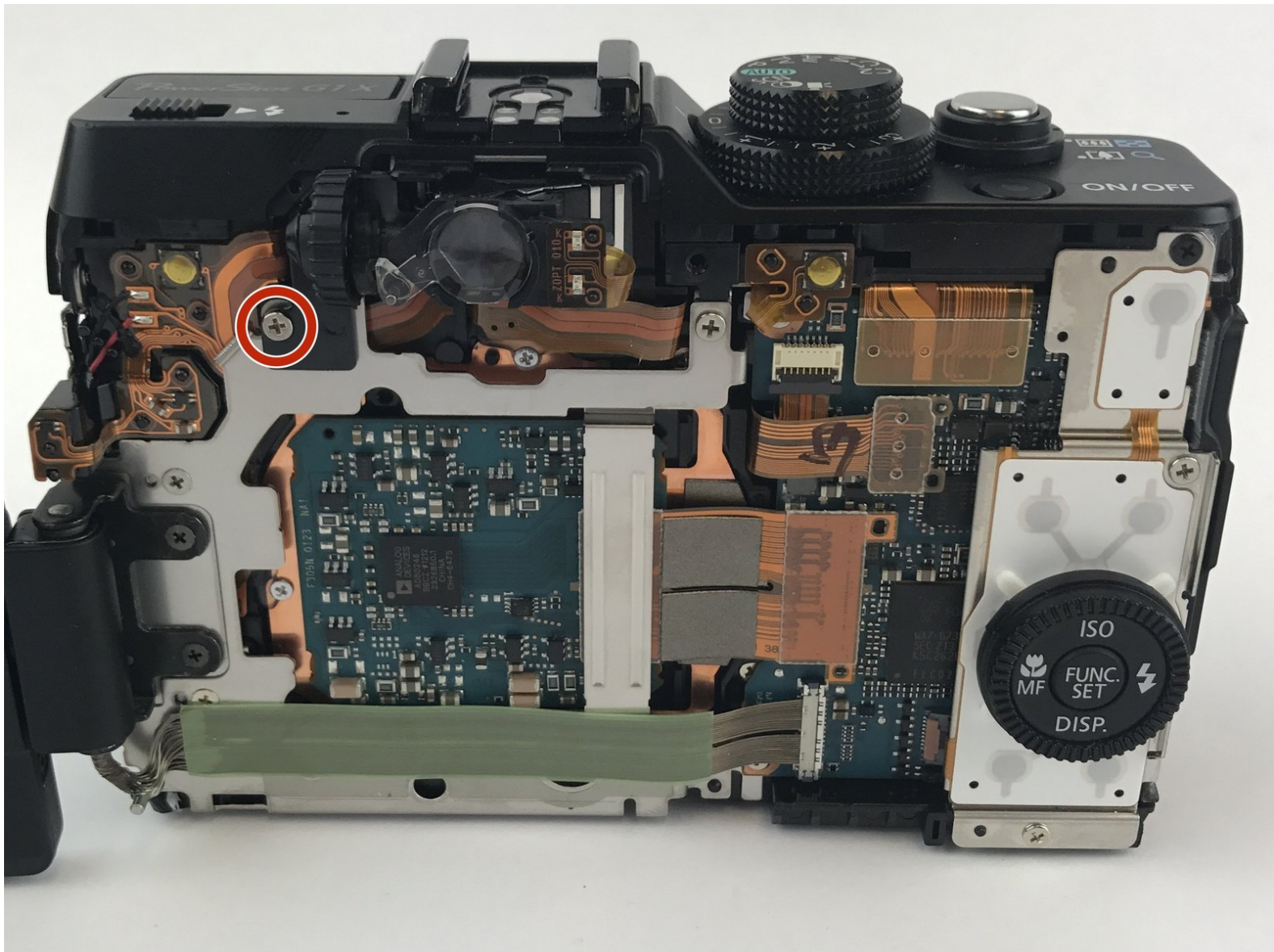




Canon PowerShot G1 X View Finder Zoom Replacement

This guide instructs the user on how to remove and replace the view finder zoom wheel located on the back of the camera.

Written By: Joseph Cosgrove



This document was generated on 2020-03-30 06:58:25 AM (MST).



TOOLS:

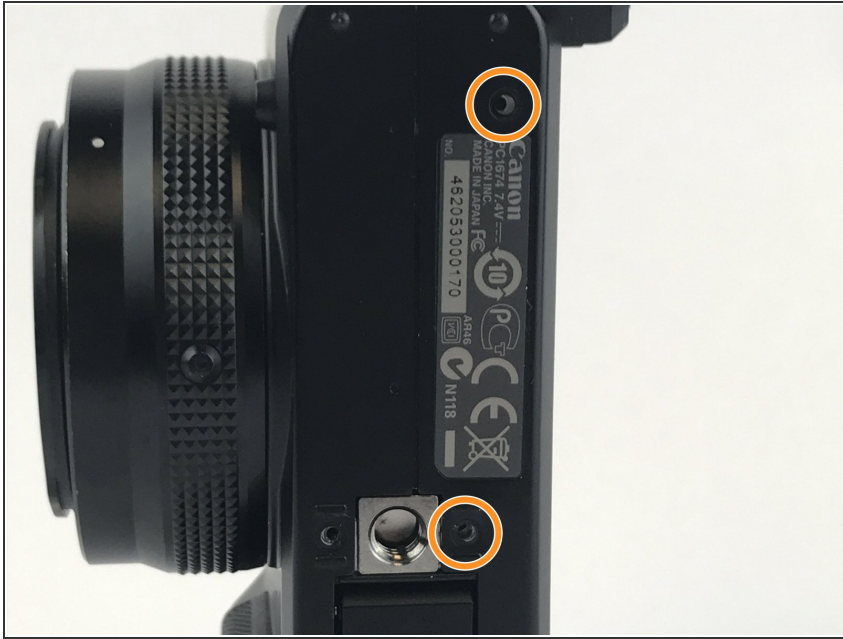
- [Spudger](#) (1)
 - [Phillips #000 Screwdriver](#) (1)
-

Step 1 — Back Camera Casing



- To begin removing the back camera casing, unscrew the Phillips screw underneath the panel covering the USB connections on the side of the camera. Use a Phillips Head 00 screwdriver for this screw.
- Remove the screw located directly beneath the USB cover located in the second photo. Use a Phillips Head 00 screwdriver for this screw.

Step 2



- After removing the first screw flip to the bottom side of the camera and unscrew the two screws located toward the back side of the casing. The screw on the front side can be left in. Use a Phillips Head 00 screwdriver for both of these screws.

Step 3



- Now flip to the opposite side of the USB panel screw and unscrew the two screws holding the small speaker cover portion of the camera. Use a Phillips Head 00 screwdriver for both of these screws.

Step 4



- The last screw is located towards the top side of the back of the camera next to the view finder. Unscrew by using a Phillips Head 00 screwdriver.

Step 5



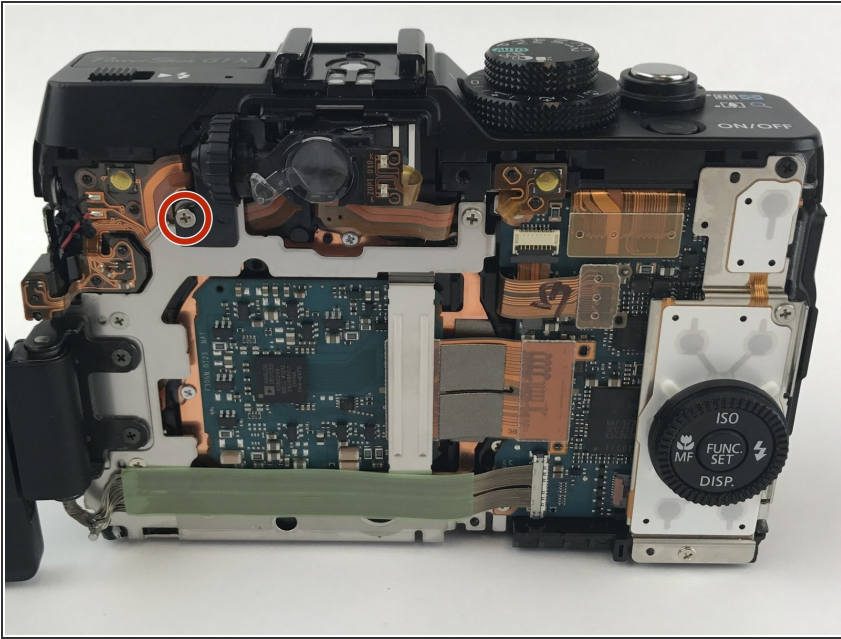
- Remove the side panel covering the speaker by gently pulling it away from the camera. You can also use spudgers to create a lever to help remove the panel.

Step 6



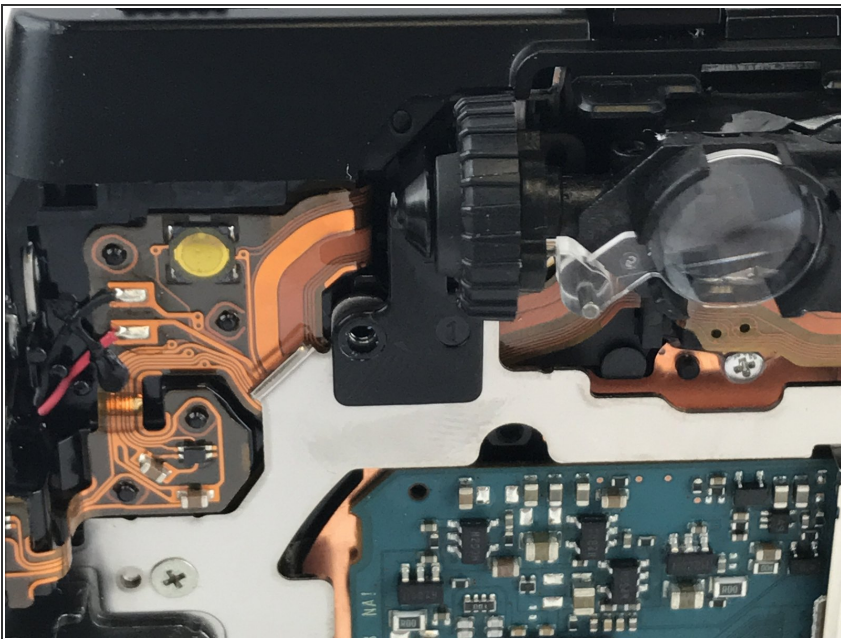
- Remove the back casing by gently pulling. You could also use spudger to create a lever to help pry it off.

Step 7 — View Finder Zoom



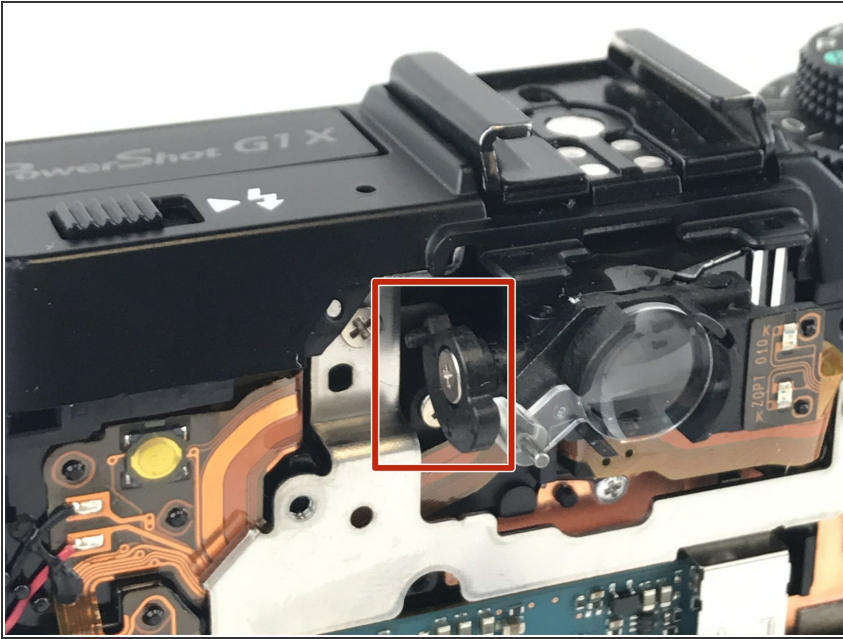
- Locate the view finder on the back of the camera. There is one screw located to the left of the wheel that must be removed before the wheel can be replaced.

Step 8



- Once that screw is removed, the wheel can be easily removed from the camera by gently pulling away from the camera and to the left away from the lens. **Be careful** as the wheel may fall after removing the screw if the camera is sitting upright.

Step 9



- In order to make sure the wheel is replaced correctly you must look at the the pin marked in the picture. It must be in the correct orientation (shown in the image) in order to get the full range of zooming motion.

Step 10



- Once the pin is in the correct orientation you can replace the wheel. Make sure that the wheel is replaced so that the groove marked in this photo is touching the pin marked in the previous steps photo.

To reassemble your device, follow these instructions in reverse order.