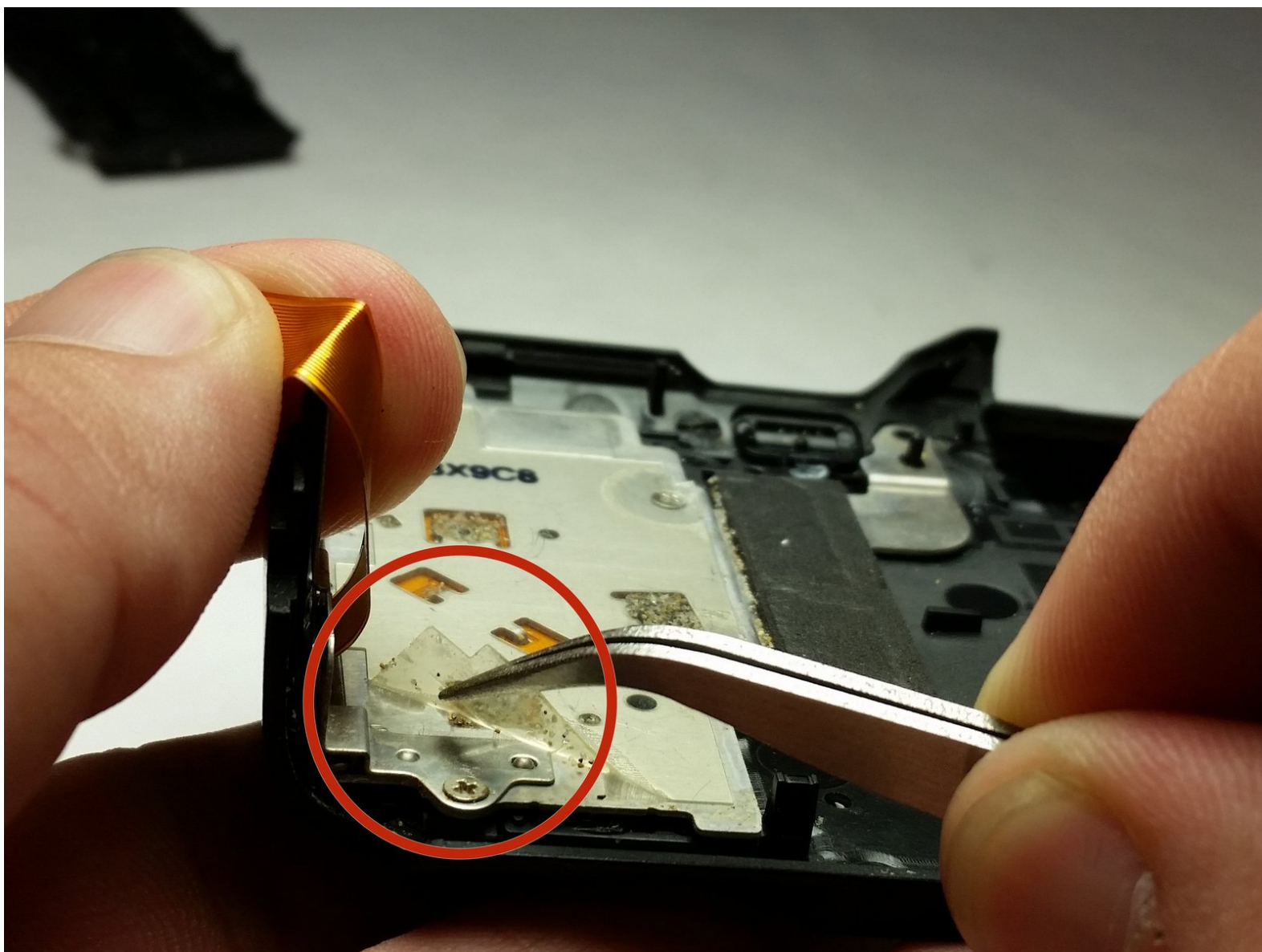




Canon PowerShot G11 Rear Dial Replacement

This guide will begin after the rear cover replacement guide. Afterwards it will go through the steps to remove the rear dial.

Written By: Dustin Brinegar





TOOLS:

- [Phillips #00 Screwdriver](#) (1)
 - [Spudger](#) (1)
 - [Tweezers](#) (1)
-

Step 1 — Rear Cover



- Remove the three screws on the bottom of the camera using the 00 sized phillips head screw driver.

Step 2



- Remove the four screws on the left side of the camera.

Step 3



- Remove the screw on the right side of the camera.

Step 4



- Open up the HDMI port on the right side of the camera. Then remove the screw in the HDMI port.

Step 5



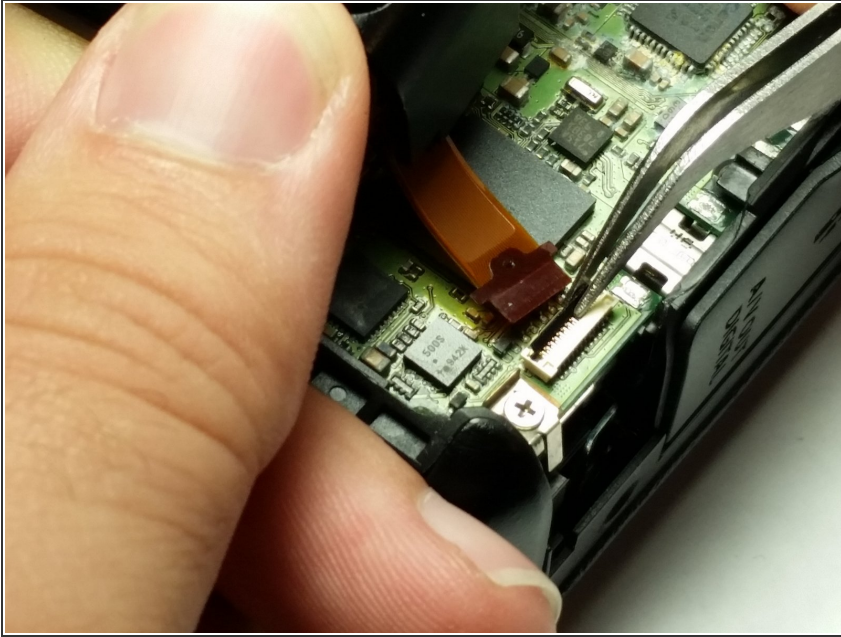
- Remove the screw to the right of the view finder on the rear of the camera.

Step 6



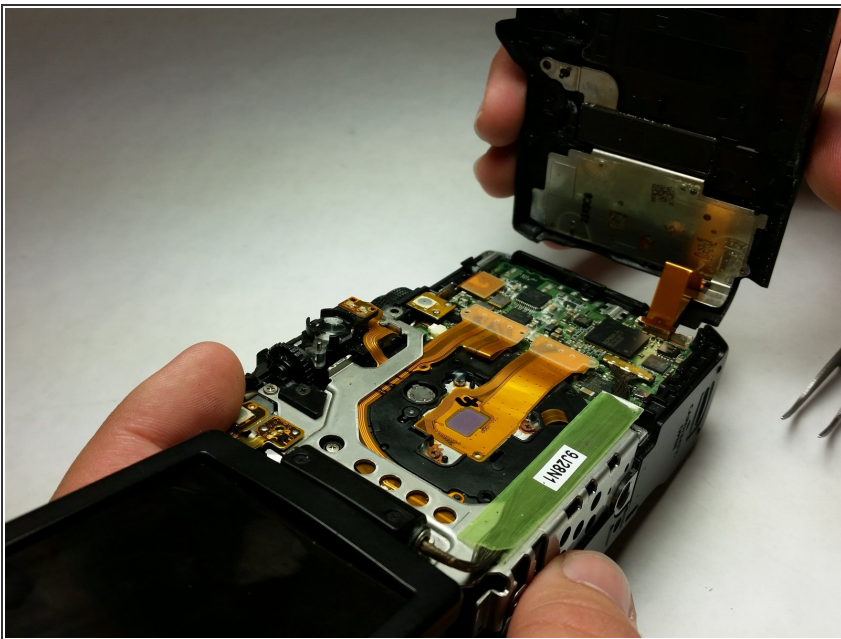
- Use the spudger to crack open the case.

Step 7



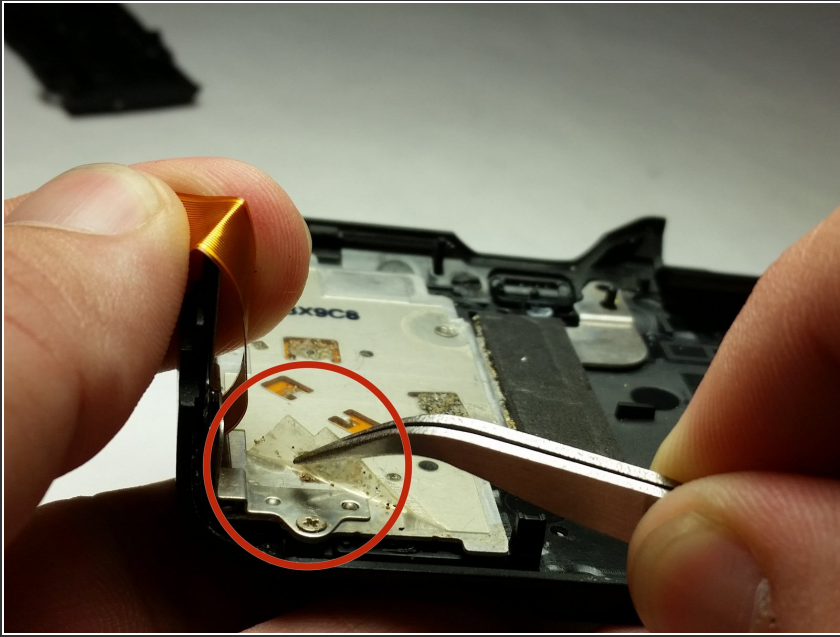
- ⚠ The rear case is still attached to the camera with a ribbon cable. The socket has a flip up lid that must be flipped up before the cable can be removed. Use the tweezers to flip the cable attachment up.

Step 8



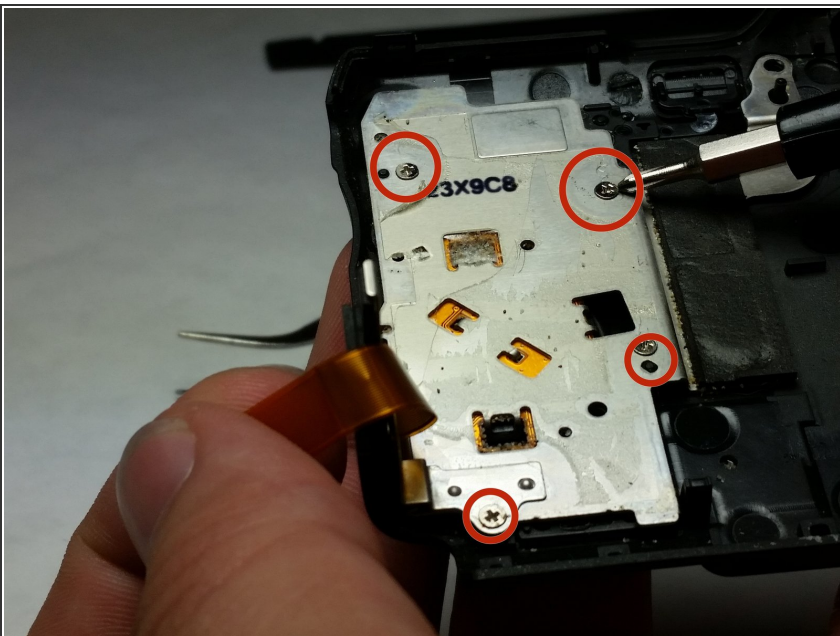
- The rear cover is now unattached from the camera.

Step 9 — Rear Dial



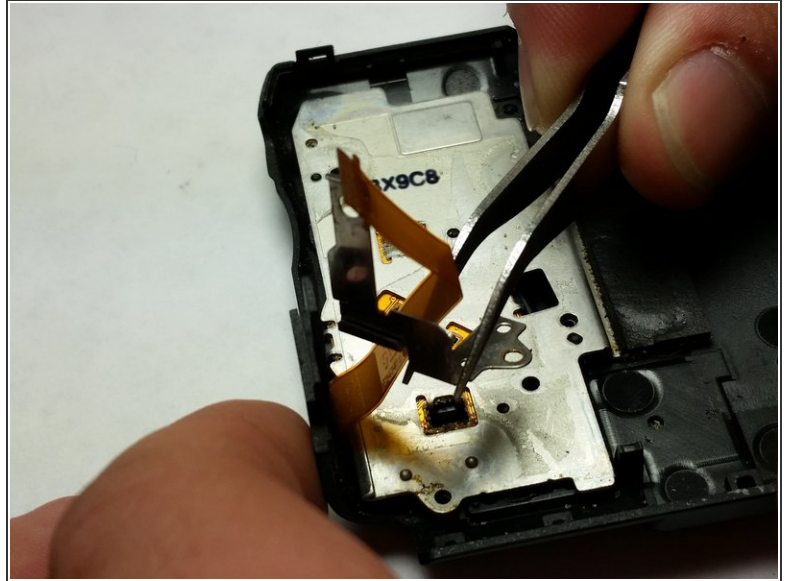
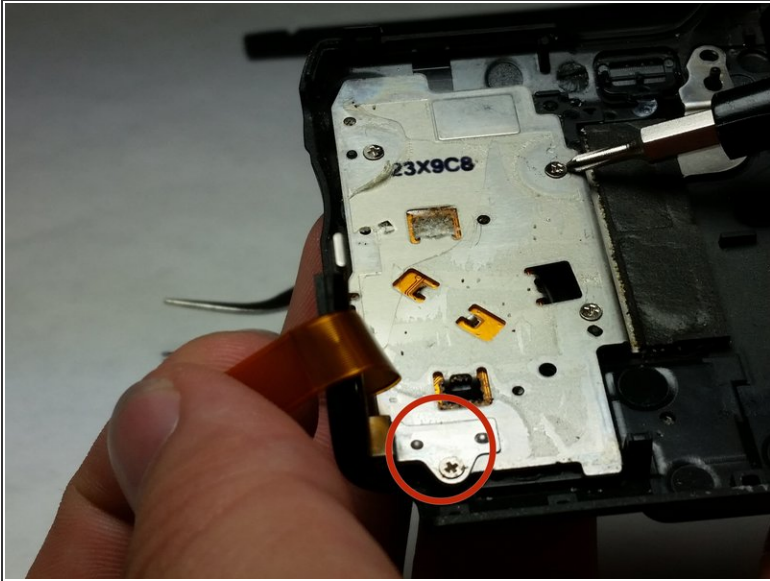
- Remove the plastic covering of the left side of the rear case interior.

Step 10



- Remove the four screws that are now accessible with the removal of the plastic covering them.

Step 11



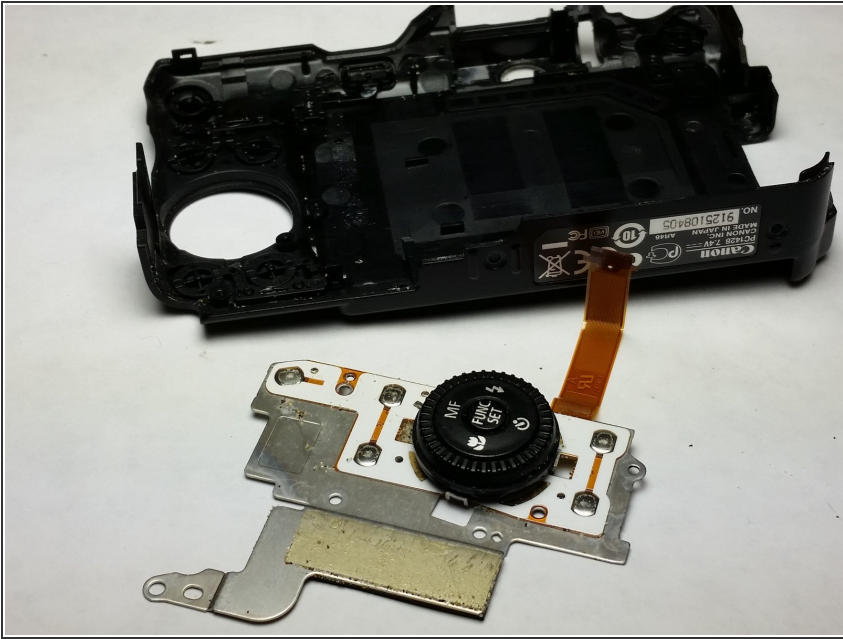
- After the screws are removed, pull the metal bracket out of the camera.

Step 12



- Push the dial out from the other side of the cover.

Step 13



- Remove the dial from the case completely.

To reassemble your device, follow these instructions in reverse order.