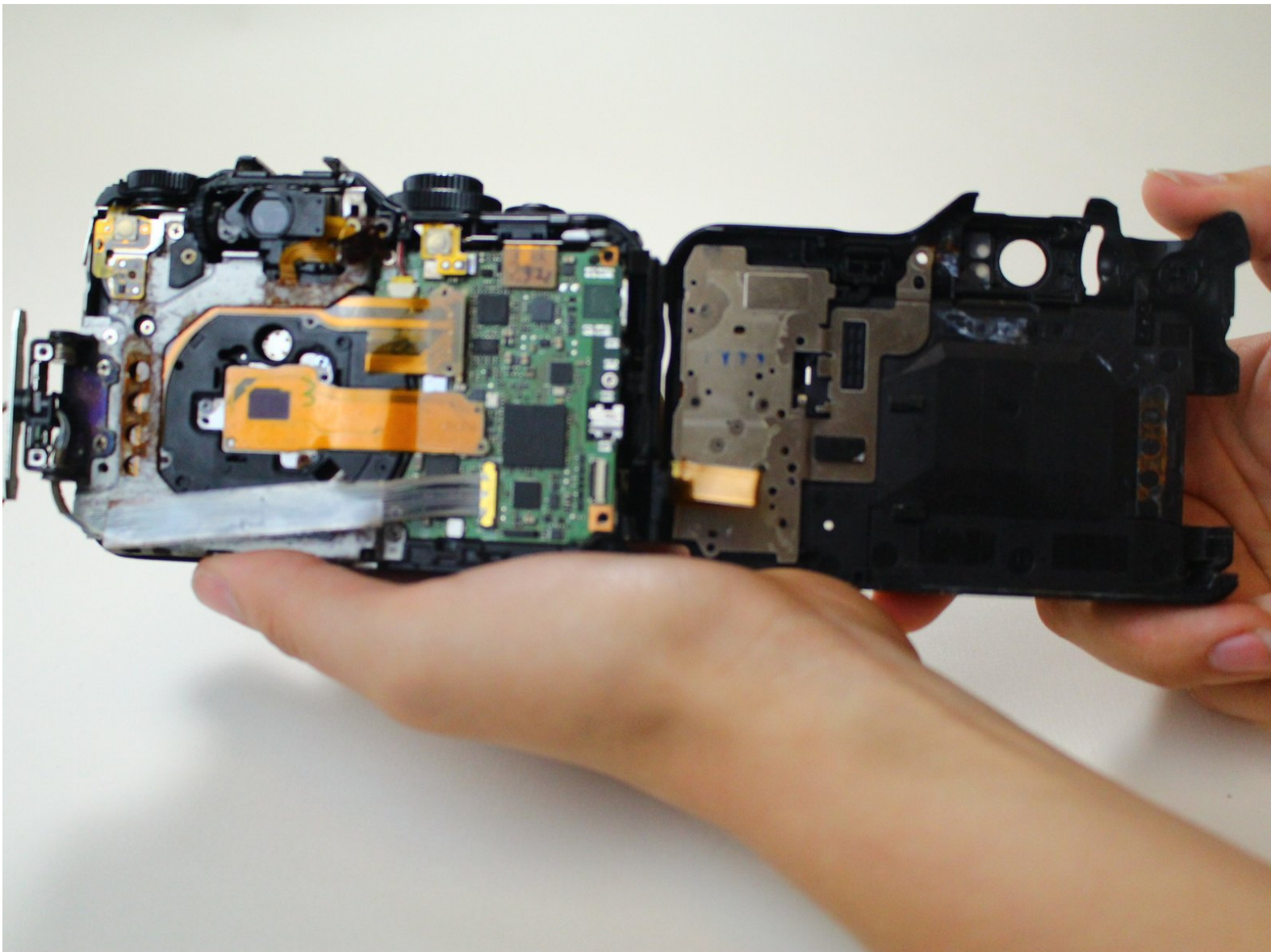




# Canon PowerShot G12 HDMI Port Replacement

Replacing the Canon PowerShot G12 HDMI port.

Written By: Nathan Meuwissen



## INTRODUCTION

Replacing the Canon-PowerShot G12 HDMI port is a highly-invasive step-intensive process that becomes necessary if the HDMI port sustains damage due to a crack, water, or jams, or if the HDMI port no longer functions properly.

In this guide, you will learn how to replace the HDMI port carefully without damaging any essential internal components.



### TOOLS:

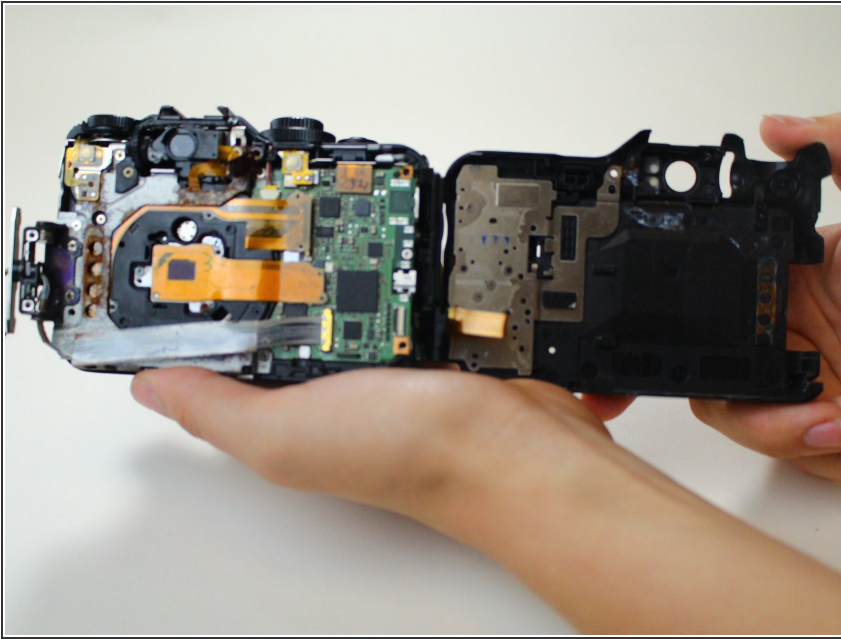
- [Phillips #00 Screwdriver](#) (1)
- [Spudger](#) (1)



### PARTS:

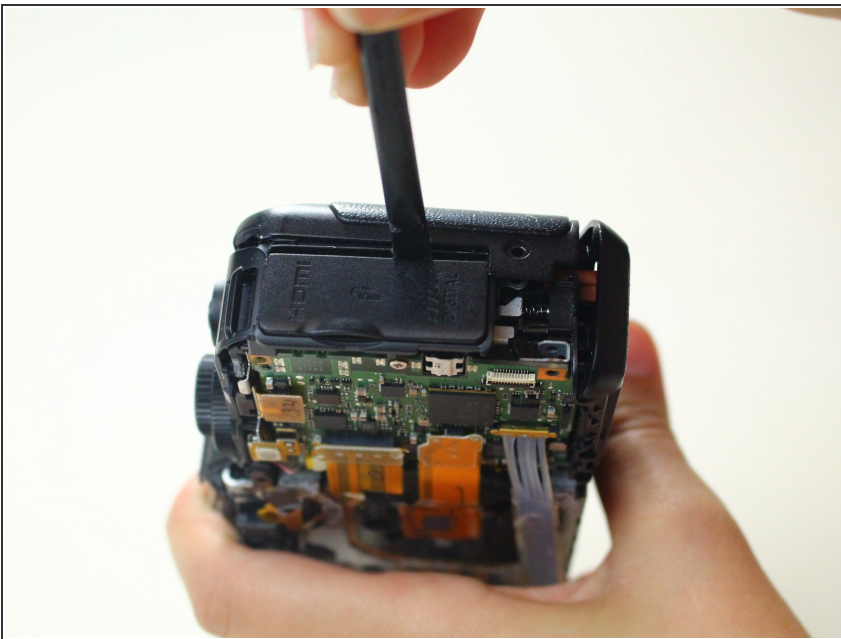
- [Canon PowerShot G12 HDMI Port](#) (1)

## Step 1 — HDMI Port



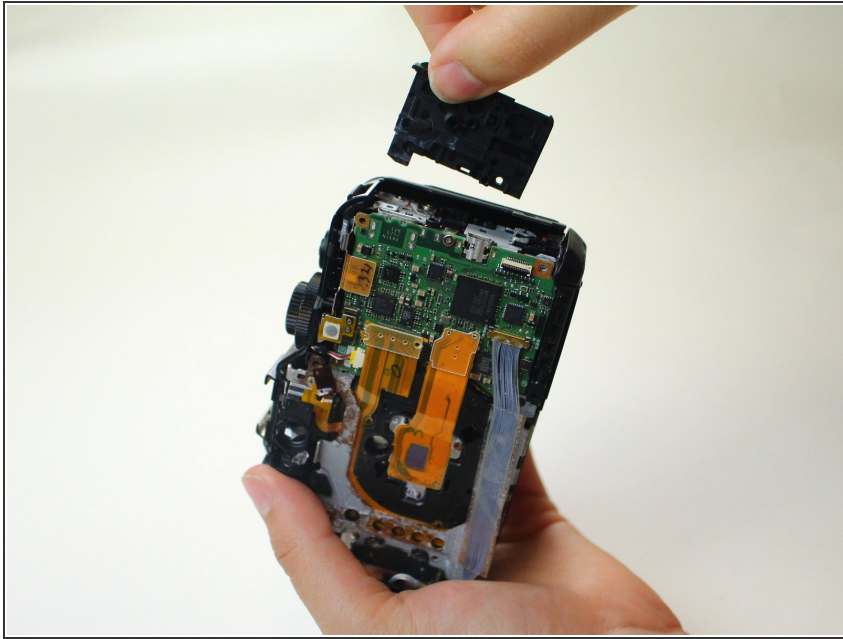
- Open the back cover of the camera, see steps 1-6 in [Canon PowerShot G12 Rear Function Setting Dial Replacement](#)

## Step 2



- On the right side of the camera looking from the back, locate the HDMI port and use a spudger to remove it.

## Step 3



- Insert the new HDMI port until you hear a click on both sides, ensuring the holes match up with the ports on the camera.

To reassemble your device, follow these instructions in reverse order.