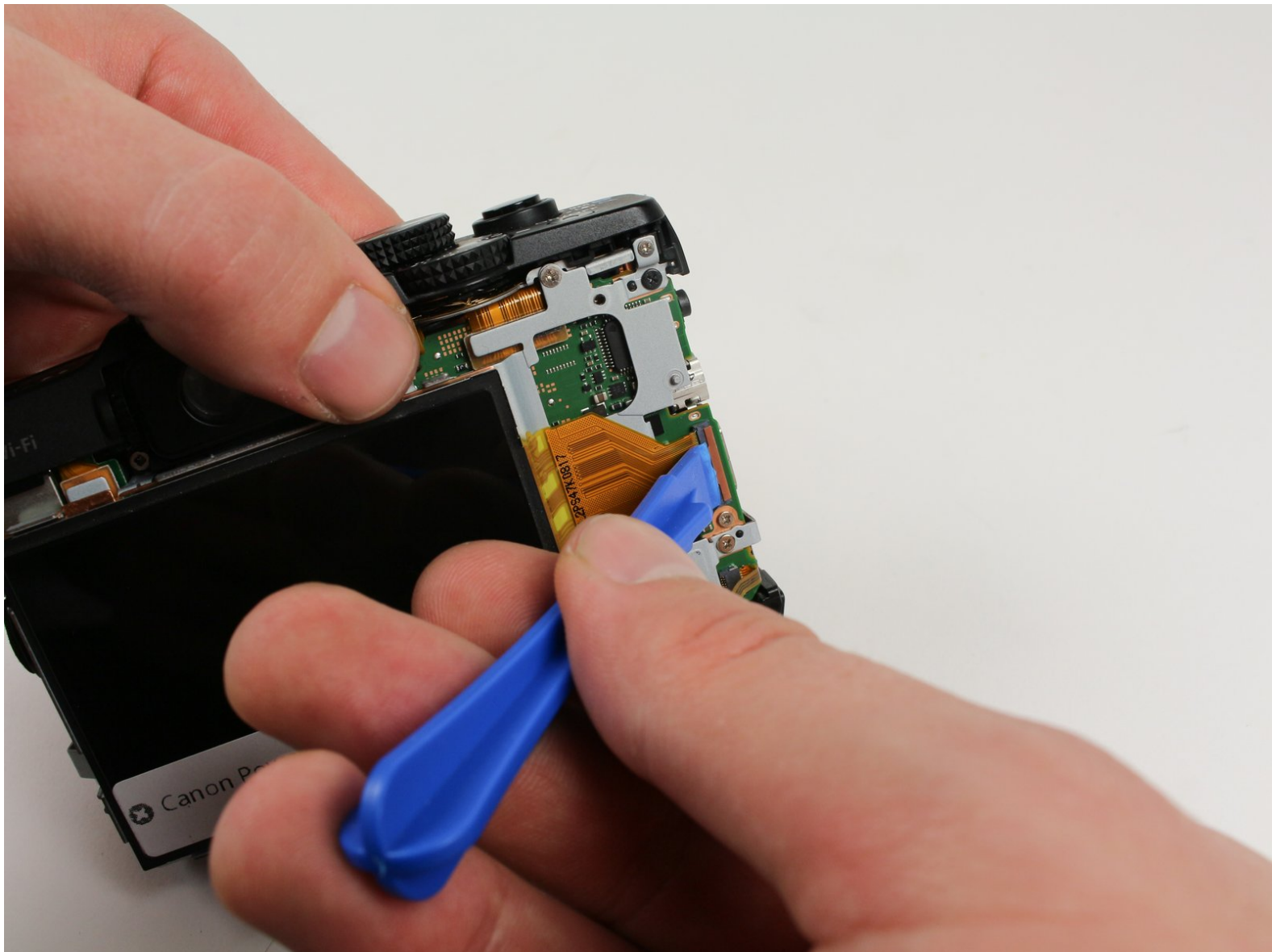




Canon PowerShot G16 LCD Replacement

This guide will show users how to replace their broken or cracked LCD.

Written By: Jonathan Harger



INTRODUCTION

Please follow these steps to replace the LCD Screen. Your LCD screen may require replacement if it no longer displays an image or has been cracked or damaged.

TOOLS:

- [Anti-Static Wrist Strap](#) (1)
 - [Phillips #00 Screwdriver](#) (1)
 - [iFixit Opening Tools](#) (1)
 - [Tweezers](#) (1)
-

Step 1 — Battery



- Open the battery flap on the bottom of the camera by applying pressure and pushing in the direction of the arrow.
- Remove your finger and allow the flap to pop open.

Step 2



- Push the brown lever so that it pivots counterclockwise.
- Grip and remove the battery.

Step 3 — Button Circuit Board



- Remove the ring around the lens by simultaneously pressing the black button located at the bottom right of the ring and rotating the ring counterclockwise.

Step 4



- Remove the four 3.3 mm screws on the bottom of the camera using a Phillips #00 screwdriver.

Step 5



- Remove the 3.3 mm screw on the right side of the viewfinder using a Phillips #00 screwdriver.

Step 6



- Remove the two 3.3 mm screws near the speaker using a Phillips #00 screwdriver.

Step 7



- Open the port cover by lifting up the tab with your finger and remove the 3.3 mm screw underneath the cover using a Phillips #00 screwdriver.
- Remove the other 3.3 mm screw below the ports using a Phillips #00 screwdriver.

Step 8



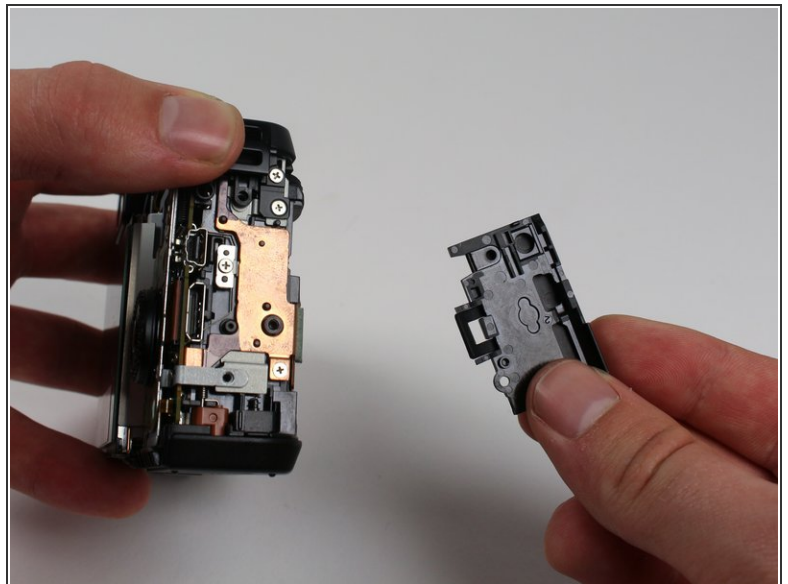
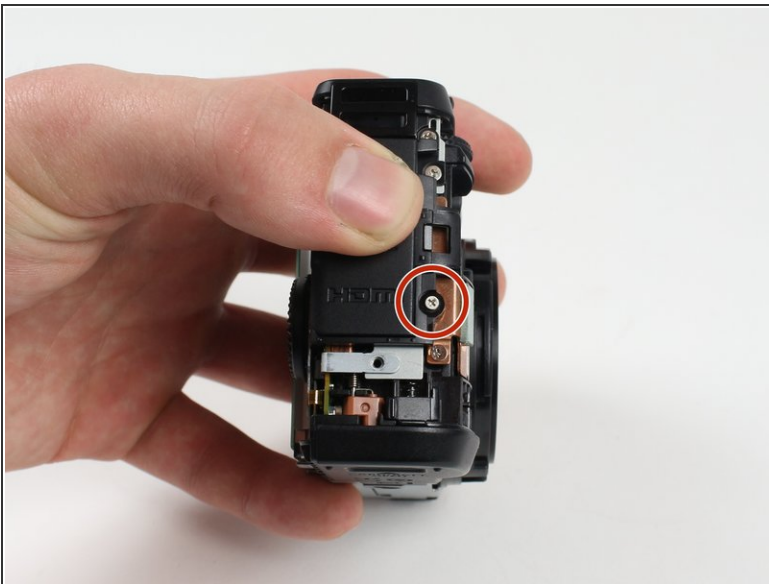
- Using your fingers, carefully pull the the back cover off by grabbing the bottom left of the back cover and pulling outwards.

Step 9



- Using your fingers, carefully pry the front cover off starting at the bottom right.

Step 10



- Remove the 3.8 mm screw at the bottom right of the port cover housing using a Phillips #00 screwdriver.
- Lift away the port cover housing.

Step 11



- Reorient the camera so that you are looking at the back.
- ⚠ Make sure to pull the connector straight down as pulling up may cause harm to the connector.
- Unplug the button circuit board from the motherboard by unlocking the ZIF connector (gently lift the brown lock that keeps the cable in place).
- Pull the connector downwards with the tweezers.

Step 12



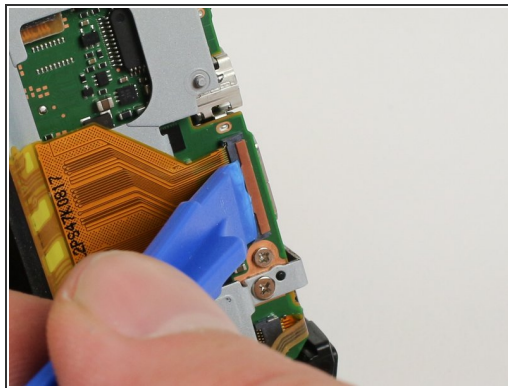
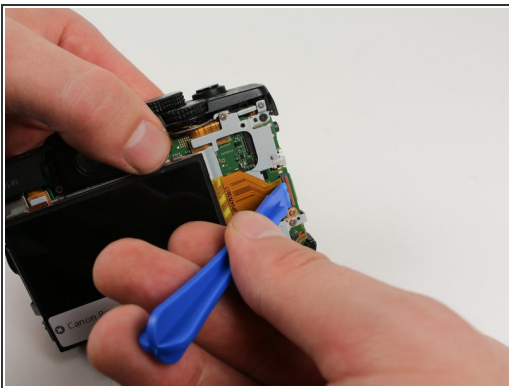
- Remove the 3.0 mm screw on the top of the button memory board using a Phillips #00 screwdriver.
- Remove the 2.8 mm screw on the bottom of the button memory board using a Phillips #00 screwdriver.

Step 13



- Lift the button circuit board away from the camera.

Step 14 — LCD



⚠ Do not pull the connector upwards as doing so may harm the connector housing.

- Unlock the ZIF connector for the large connector ribbon by lifting up on the brown flap with the plastic opening tool.
- Gently pull the connector straight out of the housing with your fingers.

Step 15



- Unplug the small connector ribbon by pulling the cable outwards from the camera using a spudger or your fingers.

Step 16



- ⚠ Be careful of the copper plate that may fall out once you lift the LCD screen away.
- Gently lift the LCD away from the camera housing.

To reassemble your device, follow these instructions in reverse order.

This document was generated on 2019-09-16 07:08:17 PM (MST).

