



Canon PowerShot G3 Screen Replacement

How to replace a Canon PowerShot G3 screen.

Written By: Ordonez5



INTRODUCTION

Replacing the screen on a Canon PowerShot G3 is a process that takes a few steps, but are all simple. If the screen is cracked, displaying odd images, or will not turn on, it will need to be replaced. No special skills are required to replace the screen, but keep in mind attention to detail and a gentle hand are important. Follow this guide to replace the screen of a Canon Powershot G3.



TOOLS:

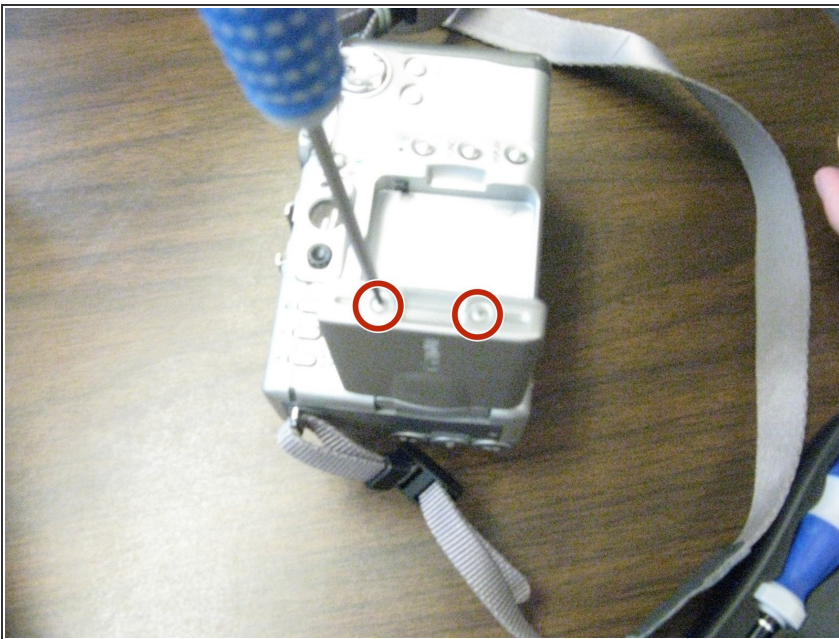
- [Phillips #0 Screwdriver](#) (1)
 - [Tweezers](#) (1)
 - [Anti-Static Project Tray](#) (1)
 - [iFixit Opening Tools](#) (1)
 - [Spudger](#) (1)
-

Step 1 — Screen



- On the bottom of the camera, push and slide open the battery compartment.
- Remove the battery.

Step 2



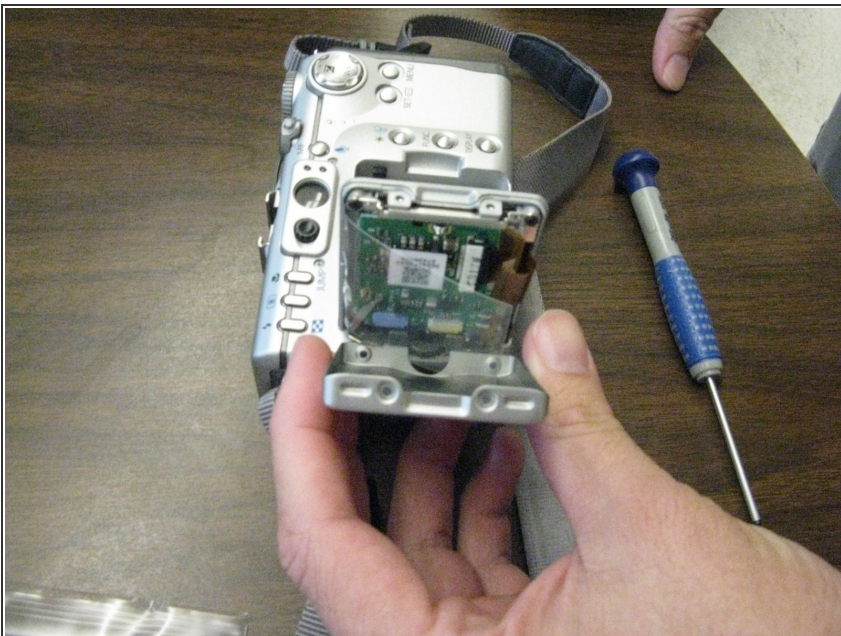
- Open the screen.
- Remove the Phillips #0 screws on the end of the screen.

Step 3



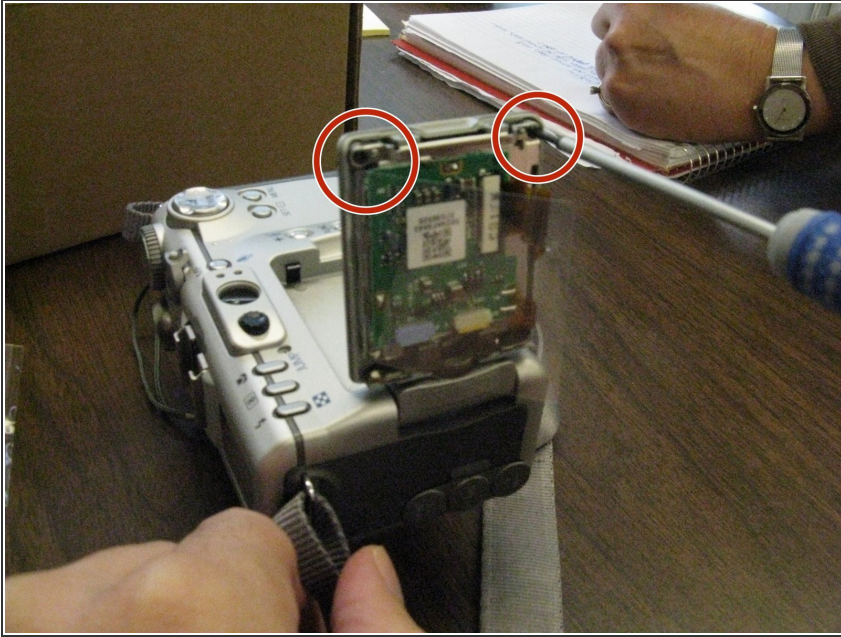
- Remove both Phillips #0 screws on the opposite side of the screen, located near the hinge.

Step 4



- Remove the back panel of the screen, using a spudger or opening tool if necessary.

Step 5



- Remove both Phillips #0 screws at the top of the screen.
- ⓘ The silver bracket in between the screws will come out after removing these screws.

Step 6



- Turn the screen perpendicular to body of the camera.
- Remove the Phillips #0 screw at the base of the hinge.

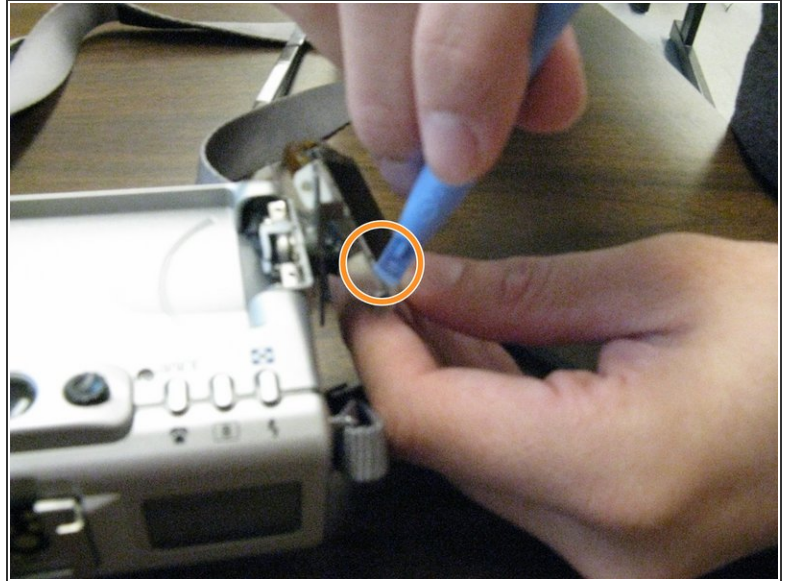
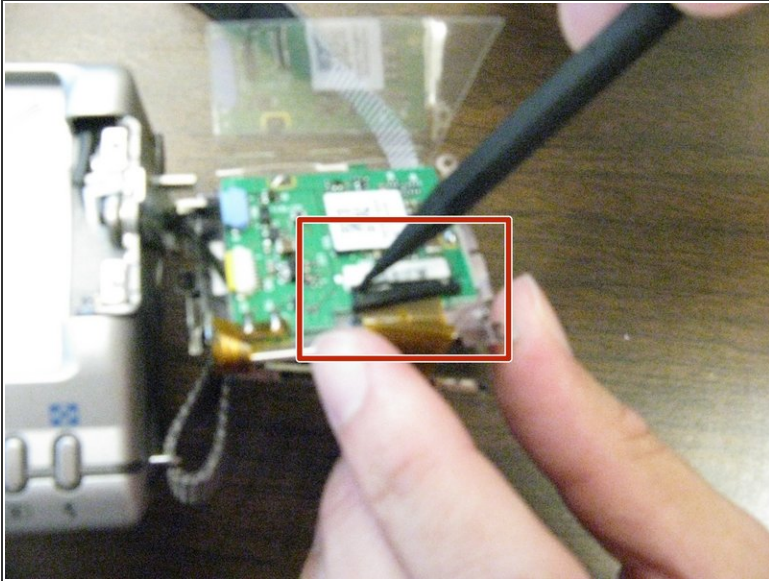
Step 7



 The screen is fragile, handle with care.

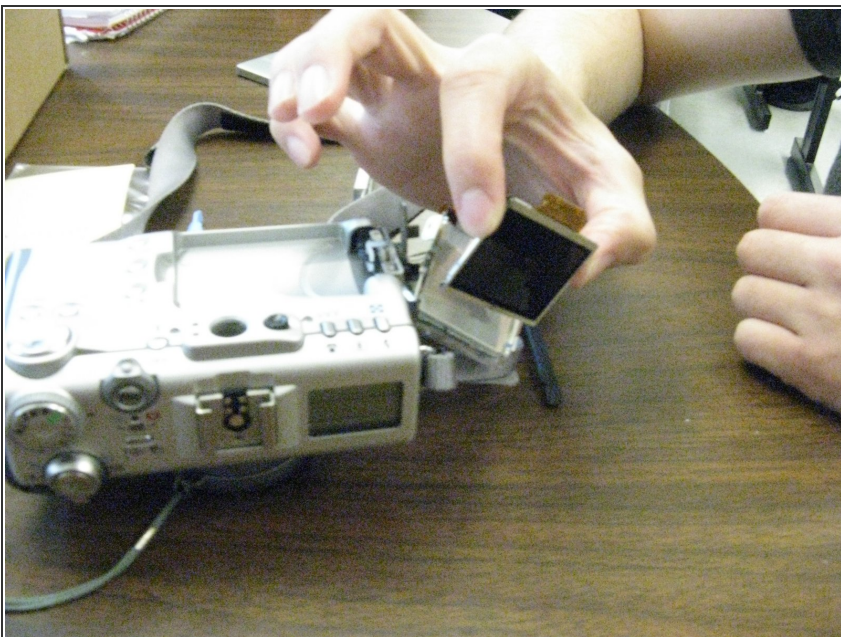
- Push the screen down and away from the camera.
- Remove the single Phillips #0 screw at the base of the rotating arm. This will allow you to remove the screen cover.

Step 8



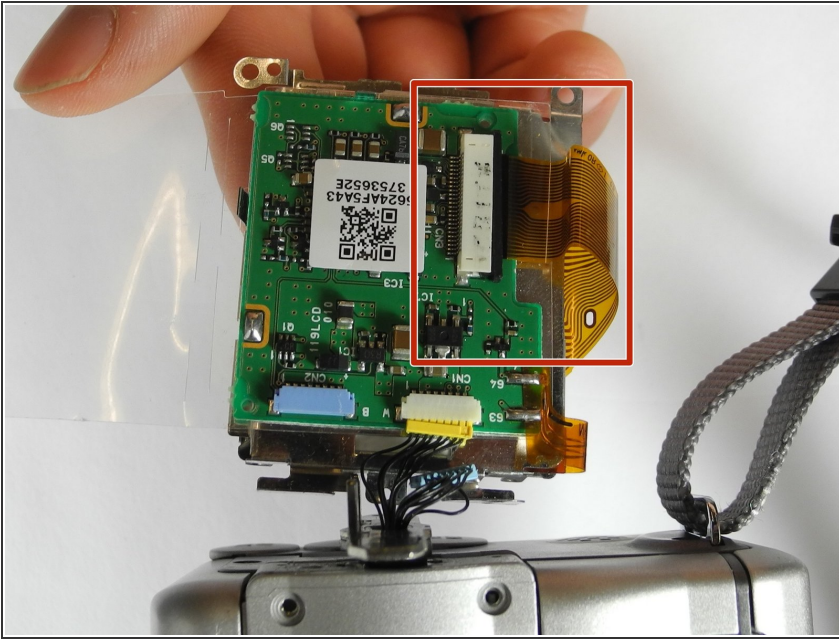
- Remove the black bar attached to the data ribbon cable. You will use this with the replacement.
 - ⓘ The screen will be loose in the front.
- Slide the black bar from underneath the white socket.
 - ⓘ The data ribbon will remain attached to the defective screen. Both of these can be discarded.

Step 9



- Insert the new screen.
 - ⓘ The ribbon will already be attached.

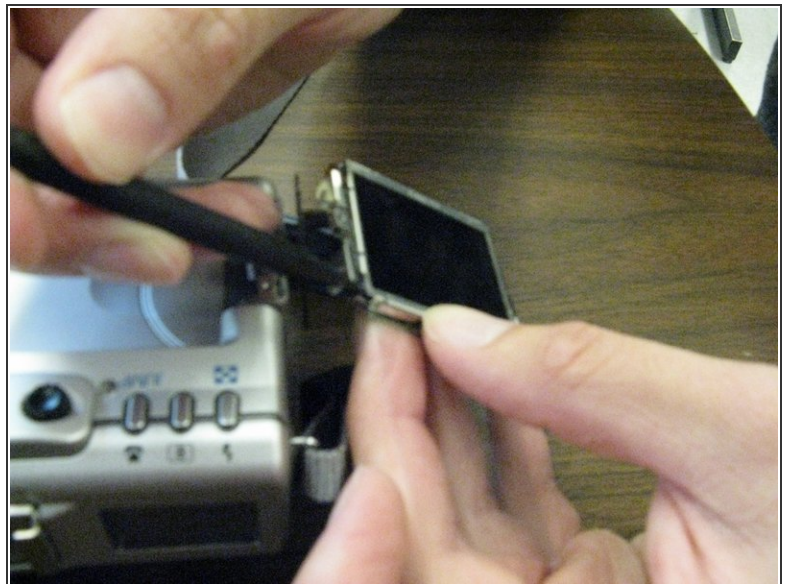
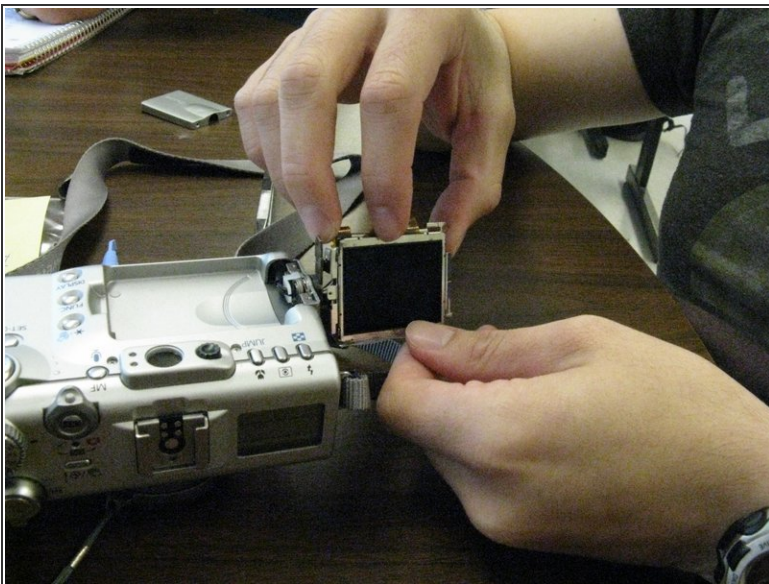
Step 10



⚠ The ribbon and black bar are fragile. You will want to be very delicate with it. It will be difficult to insert.

- Insert the ribbon into the white socket.
- i** You will have to hold this ribbon in place while placing the black bar back into the socket. You may need assistance with this part of the step.

Step 11



- Place the screen with monitor side out.
- i** You may have to hold this in place until covers are back on properly.

Repeat Steps 1-7 in reverse order to reassemble.

This document was generated on 2020-03-18 06:58:43 AM (MST).

