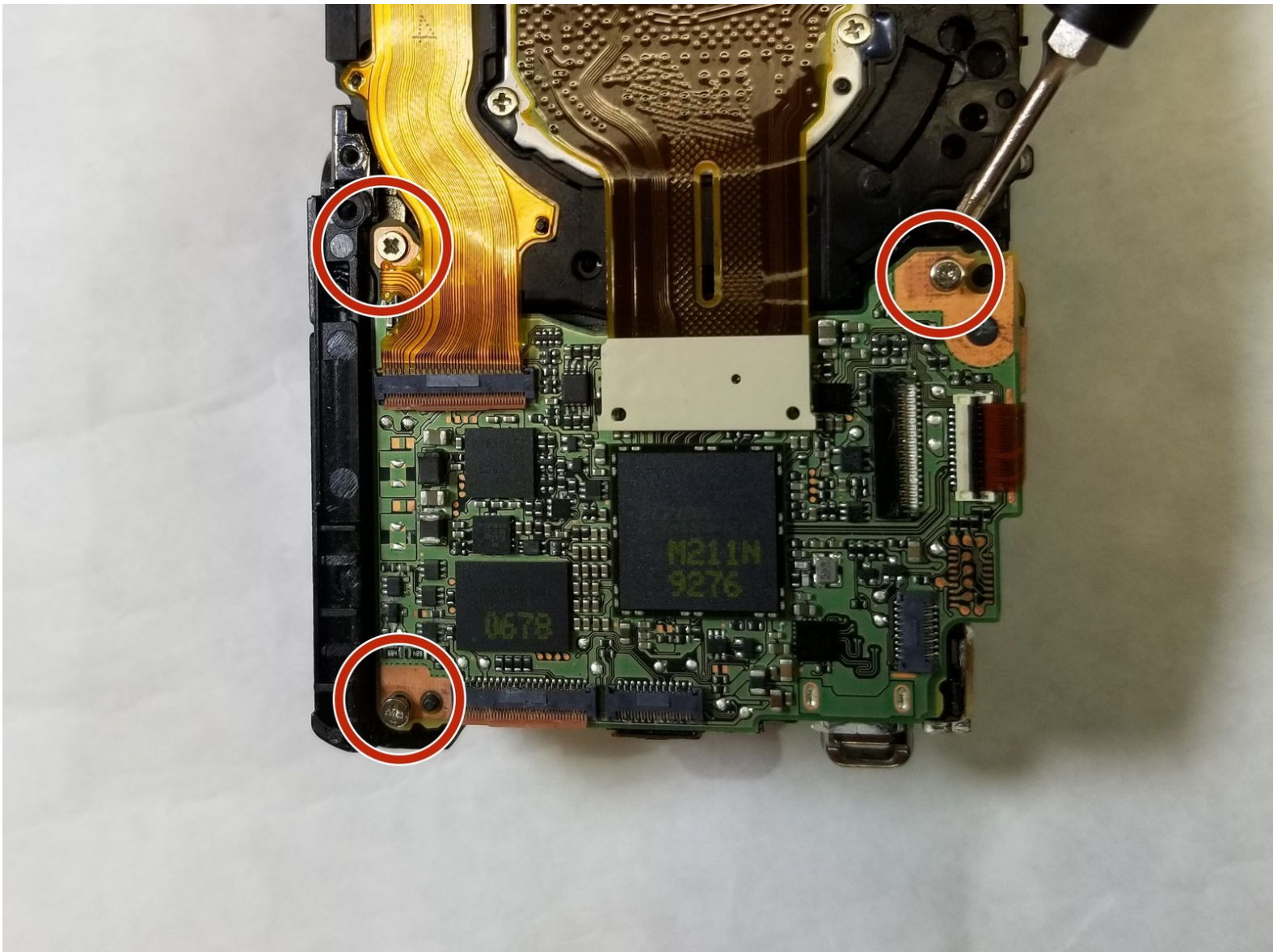




Canon PowerShot G7X Motherboard Replacement

Use this guide to replace the motherboard of your Canon PowerShot G7X.

Written By: Brandon Lacy



INTRODUCTION

The motherboard functions as the central hub for all of the components in your device. If one or more components cease to function, the motherboard may be faulty. Follow the directions in this guide to replace the motherboard in your device.



TOOLS:

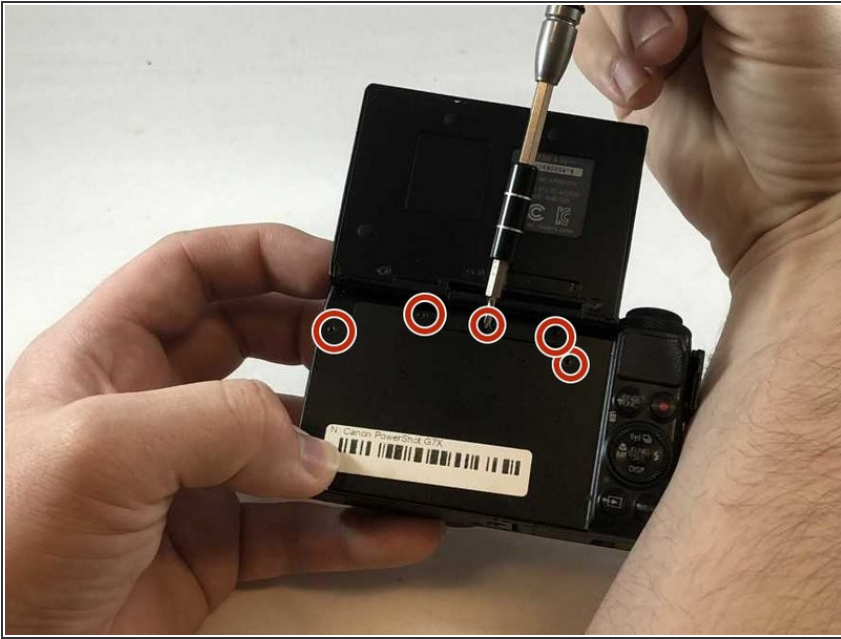
- [Spudger](#) (1)
- [Phillips #000 Screwdriver](#) (1)
- [iFixit Opening Tools](#) (1)



PARTS:

- [Canon Powershot G7X Flash](#) (1)
- [Canon Powershot G7X replacement lens](#) (1)

Step 1 — Dial



- Remove the five 2mm Phillips #000 screws that are under the screen of the camera.

Step 2



- Remove the two 3mm Phillips #000 screws under the AV-out digital flap.
- Remove the two 3 mm Phillips #000 screws from the side of the camera.

Step 3



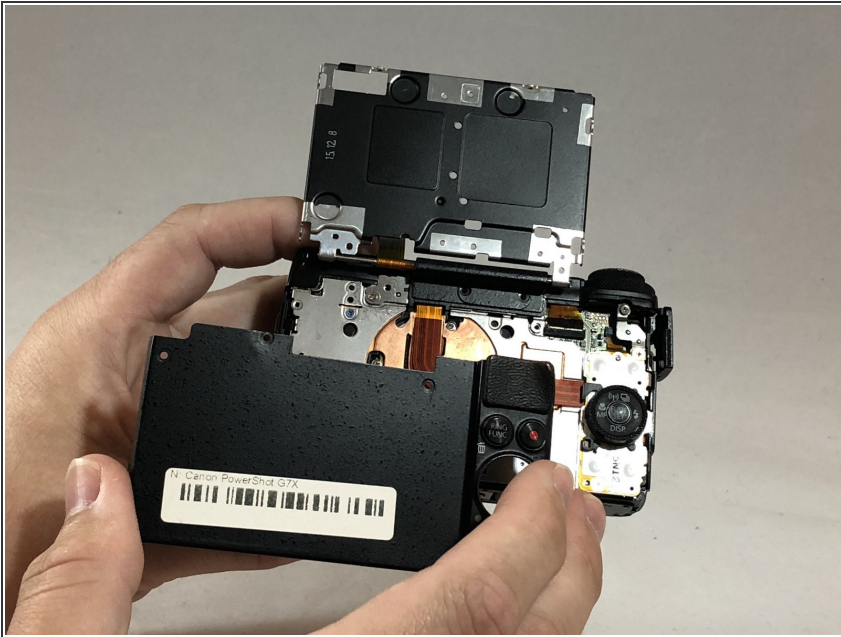
- Remove the two 3 mm Phillips #000 screws on the side of camera with the flash toggle.

Step 4



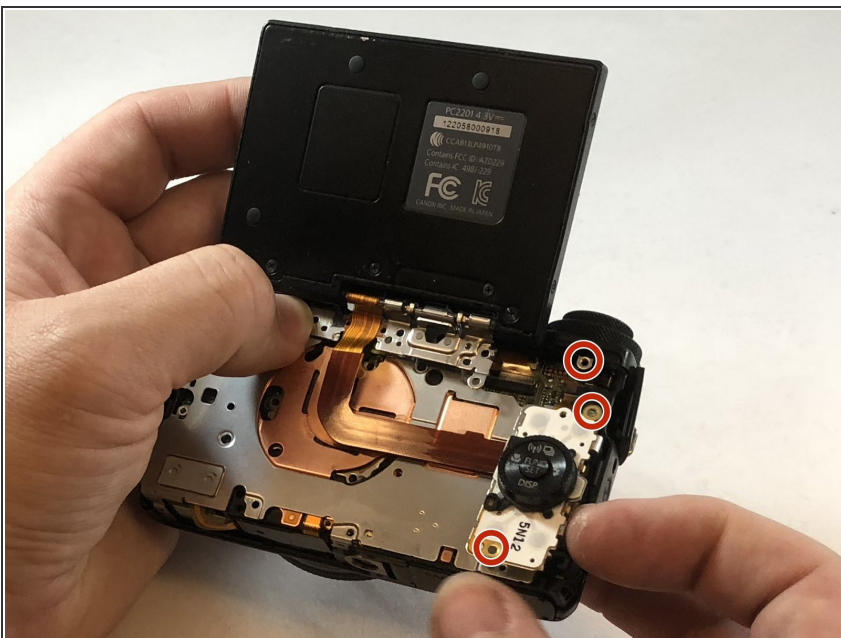
- Remove the four 4 mm Phillips #000 screws from the plate on the bottom of the camera.

Step 5



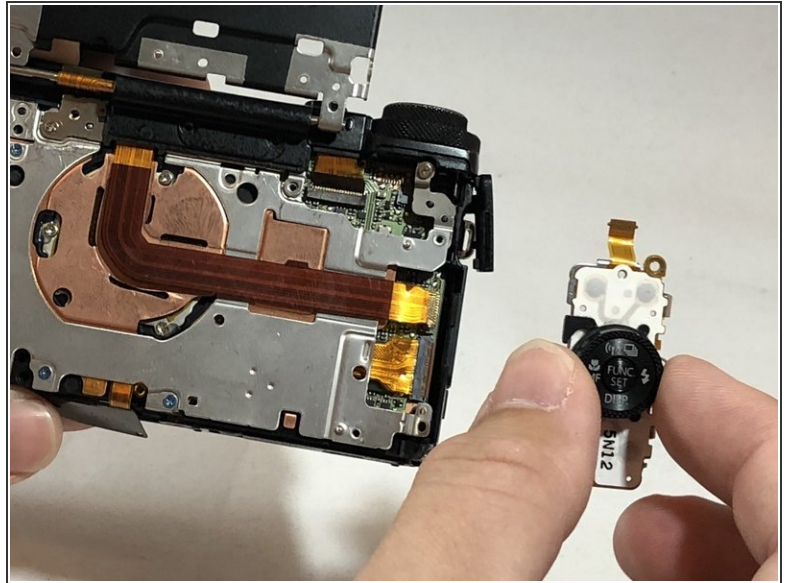
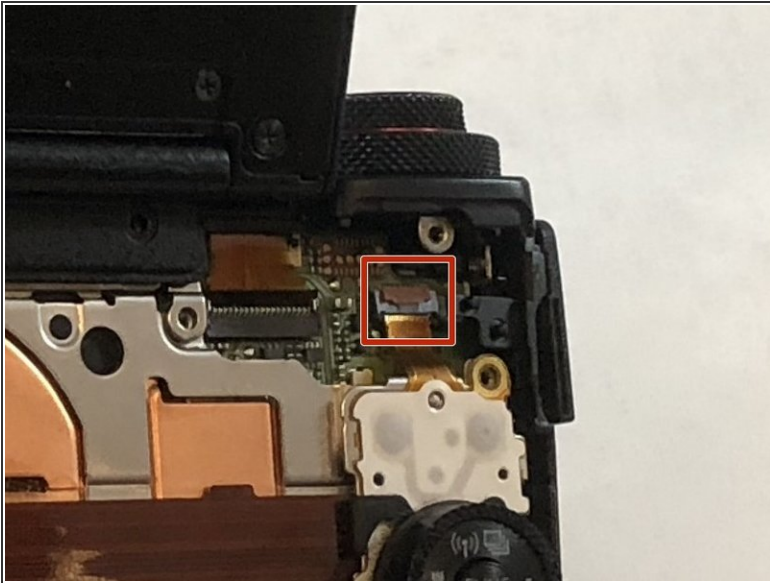
- Remove the back plate.

Step 6



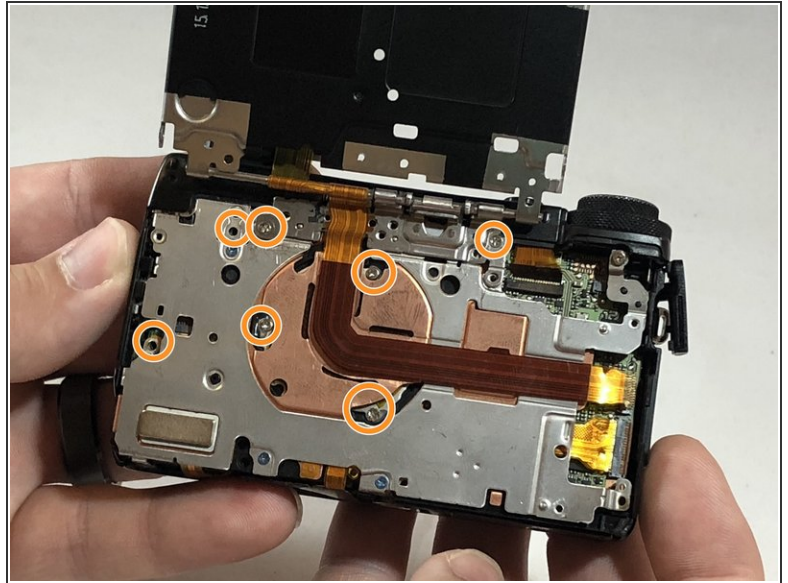
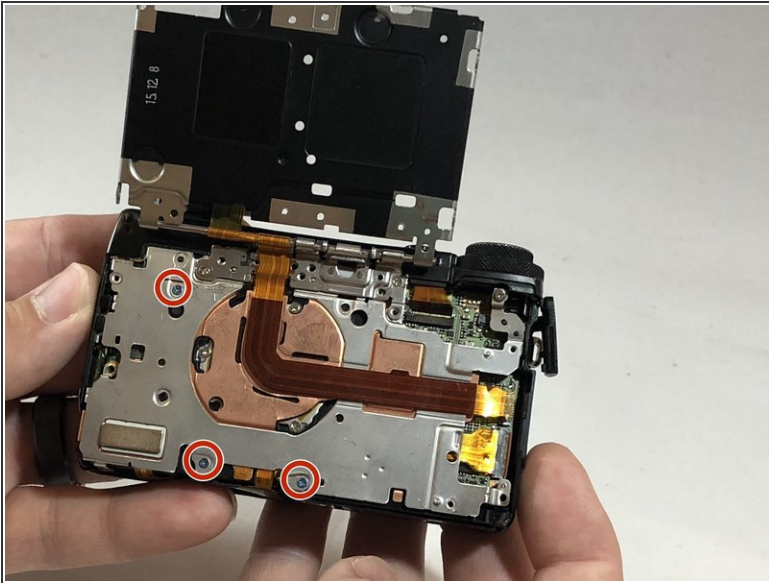
- Remove the three 3 mm Phillips #000 screws around the dial.

Step 7



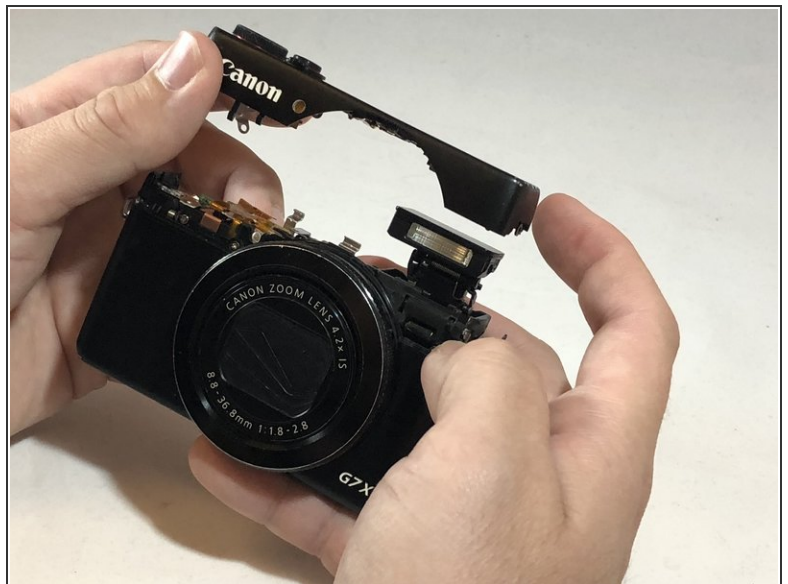
- Using the nylon spudger, gently lift the ZIF tab.
- Disconnect the ribbon cable that connects the dial to the motherboard.
- Remove the dial from the device.

Step 8 — Flash



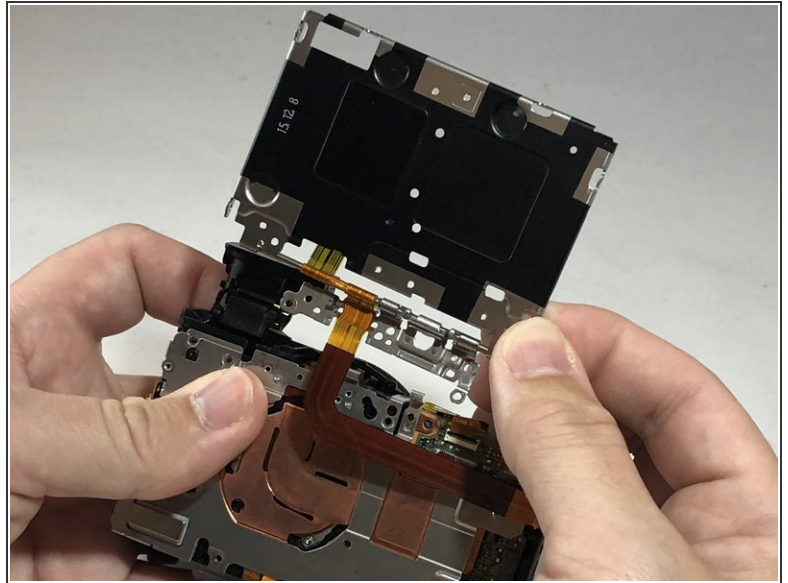
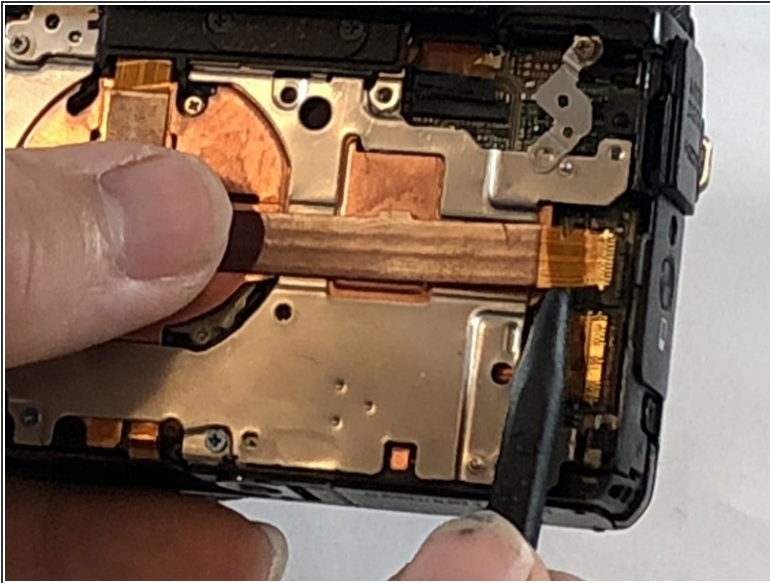
- Remove the three, blue 5 mm Phillips screws from the back plate.
- Remove seven 2 mm Phillips #000 screws.

Step 9



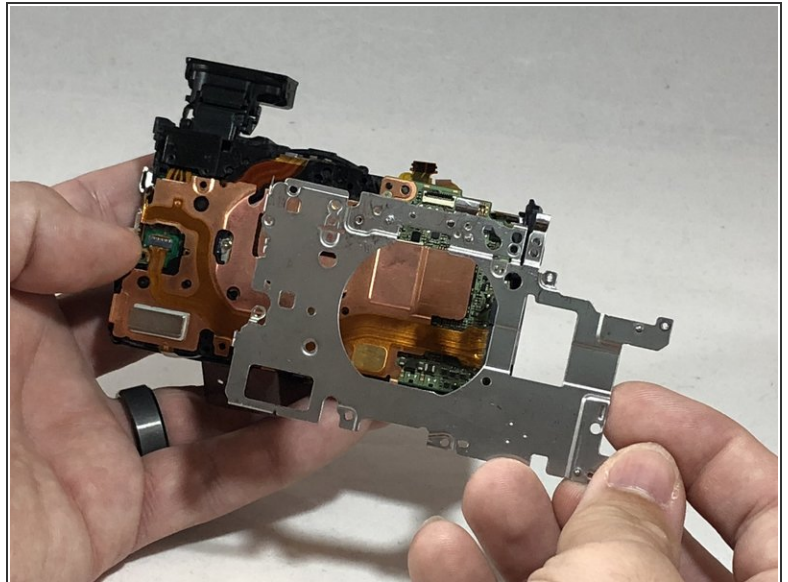
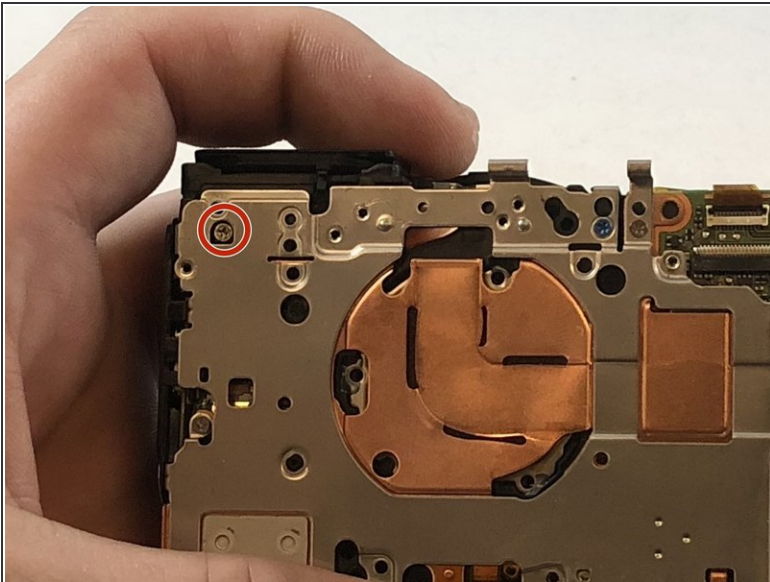
- While using the plastic opening tool, gently pry the top plate off the camera.

Step 10



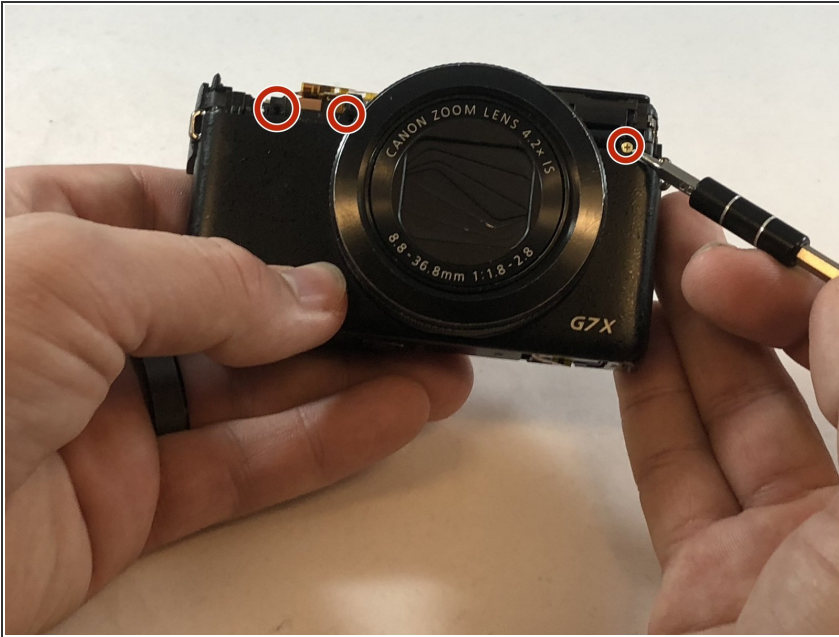
- Using the black nylon spudger, gently lift the ribbon cable connected to the LCD screen housing until it comes out then remove the housing.

Step 11



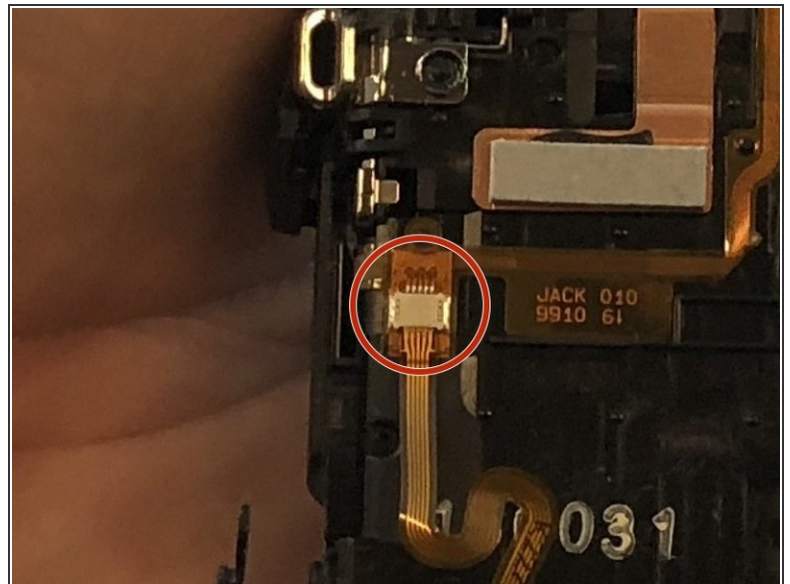
- Remove the 2 mm Phillips #000 screw underneath the top plate.
- Remove silver plate.

Step 12



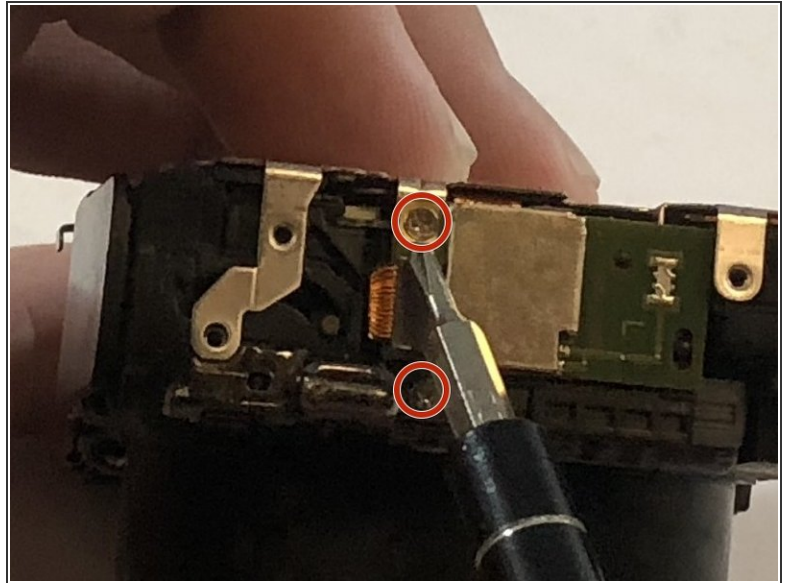
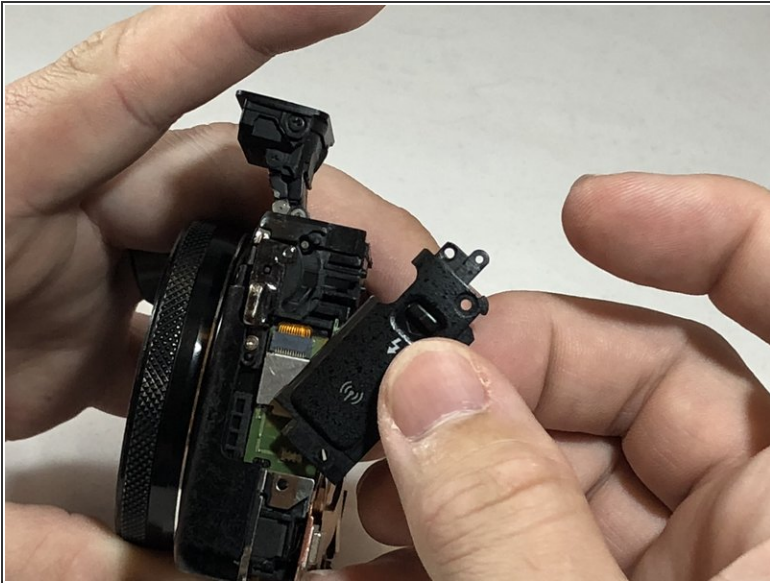
- Take the Phillips #000 and remove the three 5 mm screws from the front plate.

Step 13



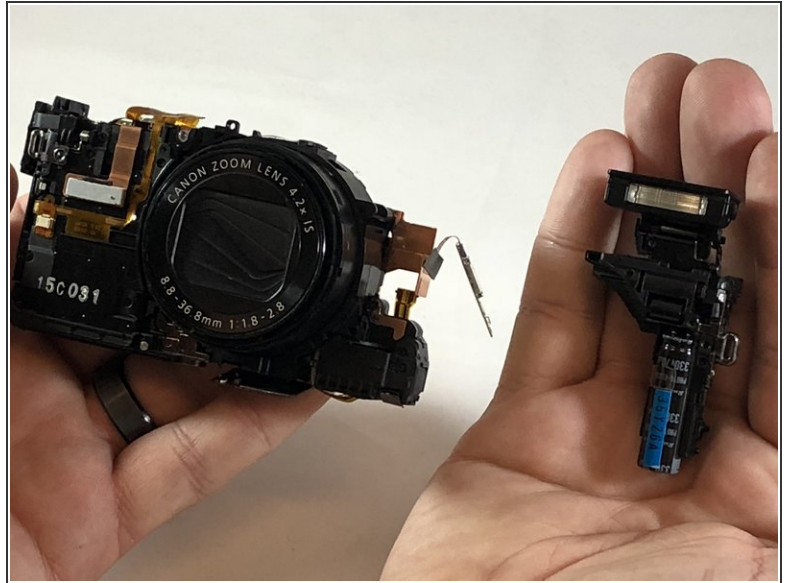
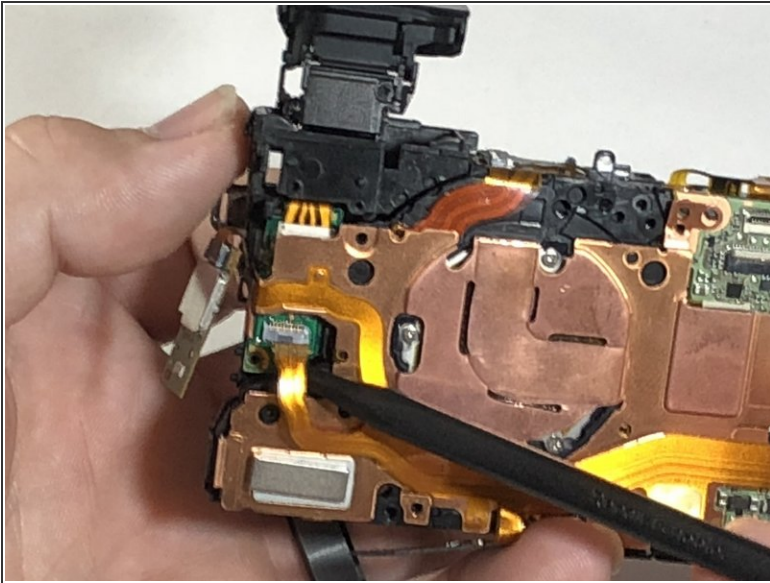
- Using the spudger, gently lift the ribbon cable from underneath the front plate.
- Remove the front plate.

Step 14



- Remove flash toggle plate.
- Remove the 2mm Phillips #000 screws under the flash toggle.

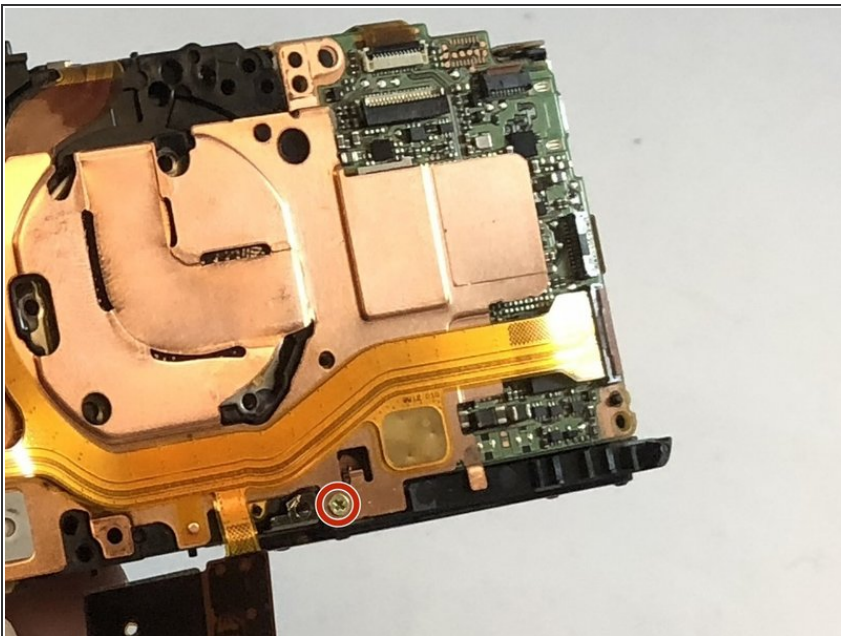
Step 15



⚠ Flash contains charged capacitor. Shock hazard.

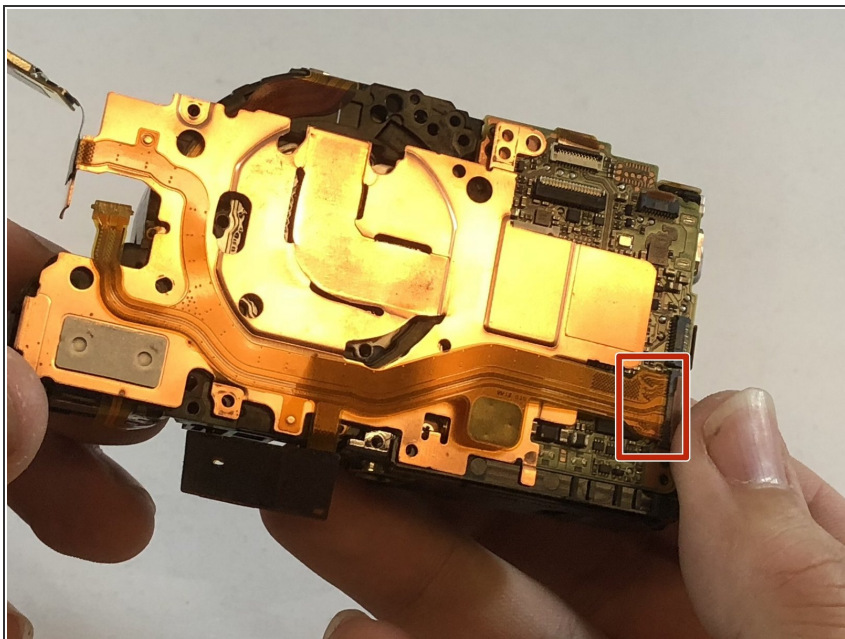
- Using the black nylon spudger, gently lift the ribbon cable that connects the flash to motherboard and remove the flash from the device.

Step 16 — Lens



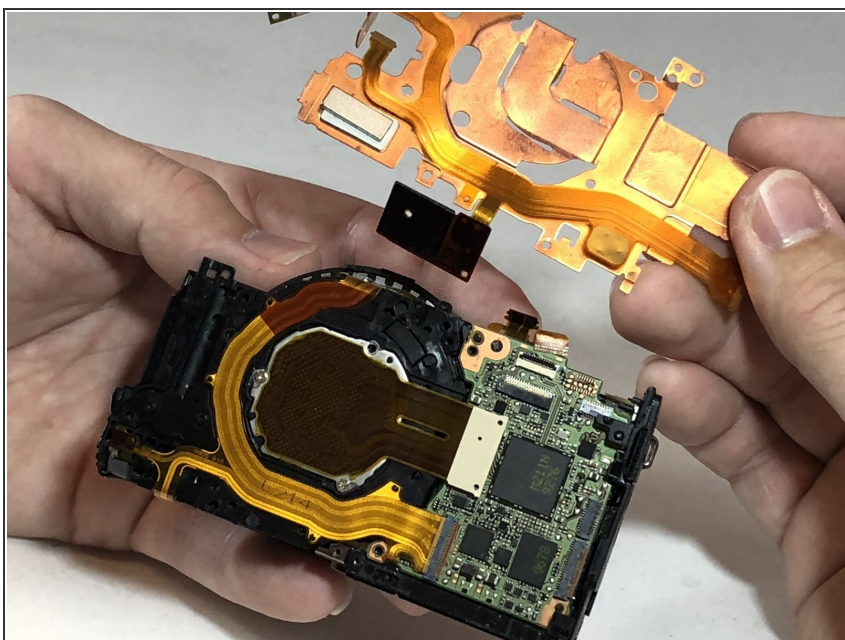
- Remove the 5 mm Phillips #000 screw from the copper plate.

Step 17



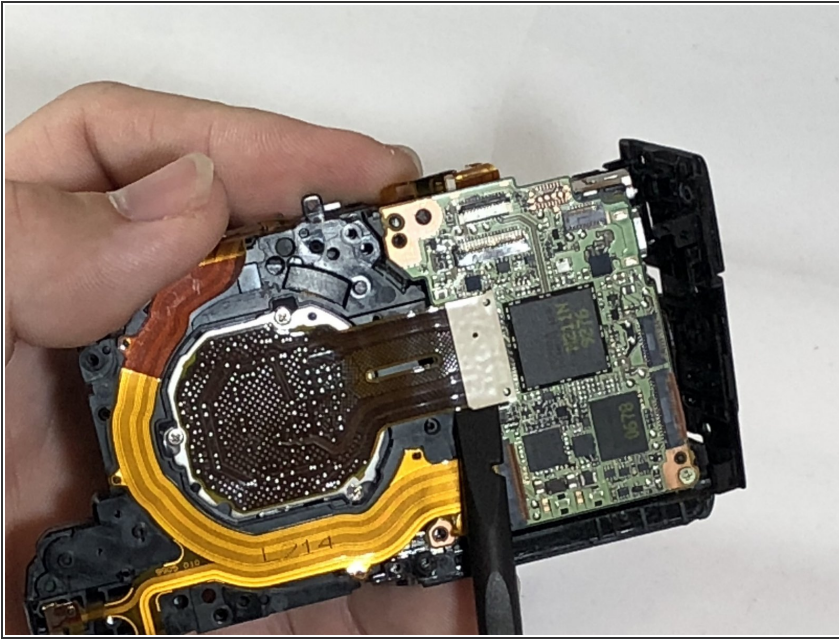
- Using the black nylon spudger, lift the ribbon cable gently until it comes out.

Step 18



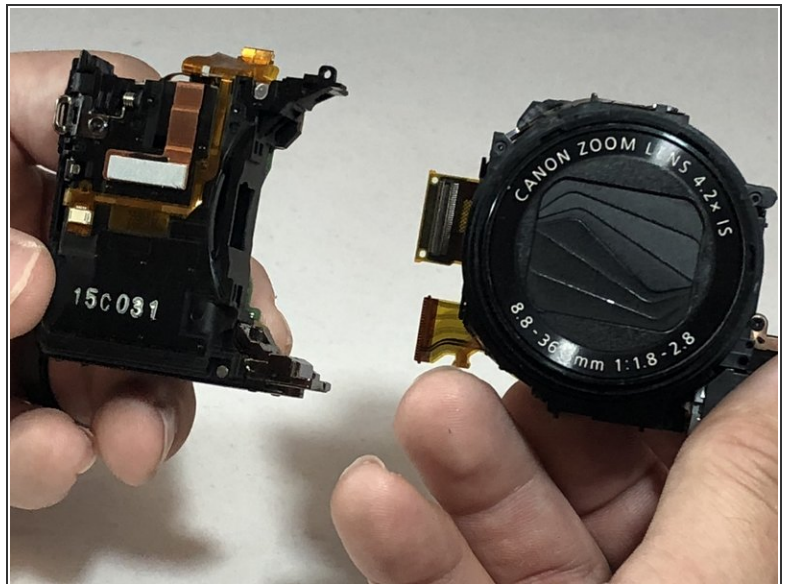
- Remove the copper plate to reveal connections to the lens.

Step 19



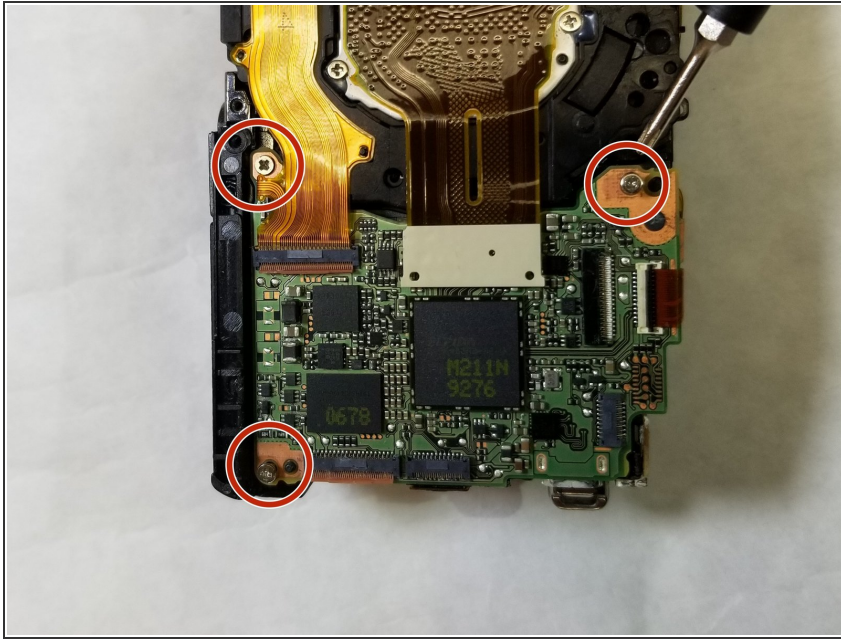
- Using the black nylon spudger, lift gently on the pin connector until it comes off.

Step 20



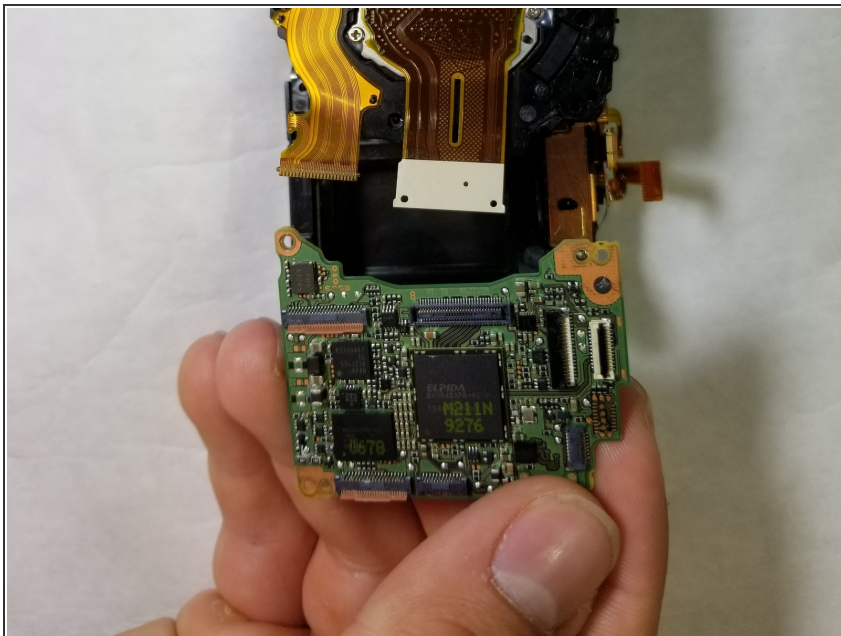
- Using the spudger, gently lift on the ribbon cable until it comes out.
- Separate the lens from the motherboard.

Step 21 — Motherboard



- Remove the 5 mm Phillips #000 silver, anchor screws from the corners of the motherboard marked in the picture.

Step 22



- Remove motherboard.

To reassemble your device, follow these instructions in reverse order.