



Canon PowerShot S110 Display Replacement

The display being replaced has: 7cm length 5.2 cm height

Written By: akac92



INTRODUCTION

This is a step by step guide that demonstrates how to replace the display for your Canon PowerShot S110.



TOOLS:

- [Phillips #0 Screwdriver](#) (1)
 - [Spudger](#) (1)
-


Step 1 — Display



- Slide open the battery cover on the bottom of the camera.
 - Eject the battery by pulling the red release latch.
- ⚠ Battery must be removed to avoid shorting any part of the camera

Step 2



 Use a #0 Phillips screwdriver to remove the following screws:

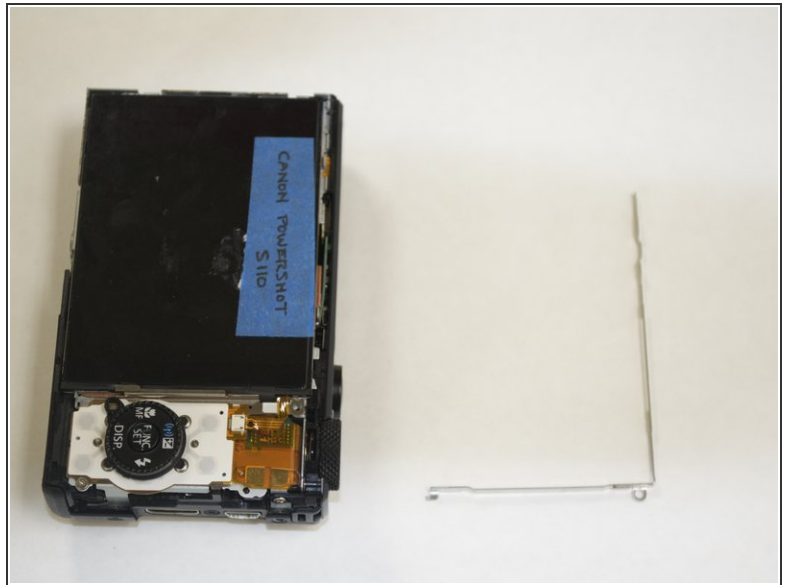
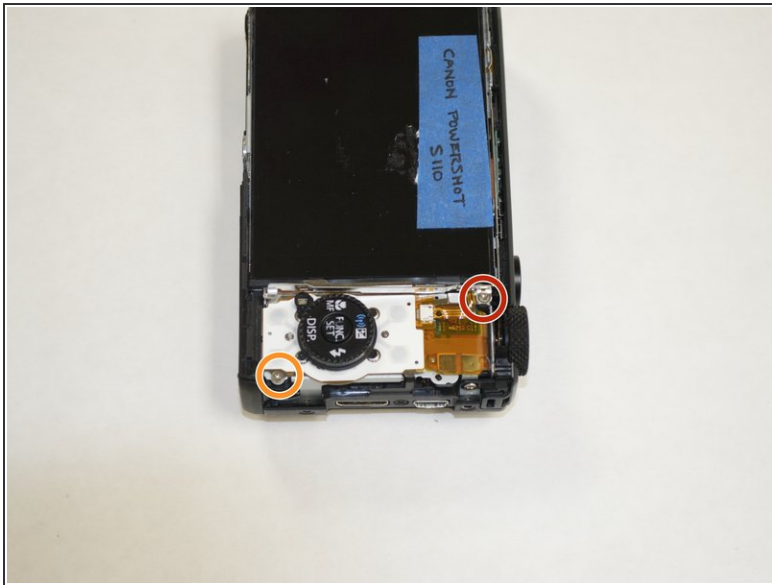
- the 2 screws on the side of the camera near the HDMI input panel,
- the 2 screws on the opposite side of the camera,
- and the 2 screws on the bottom of the camera near the tripod mounting hole.

Step 3



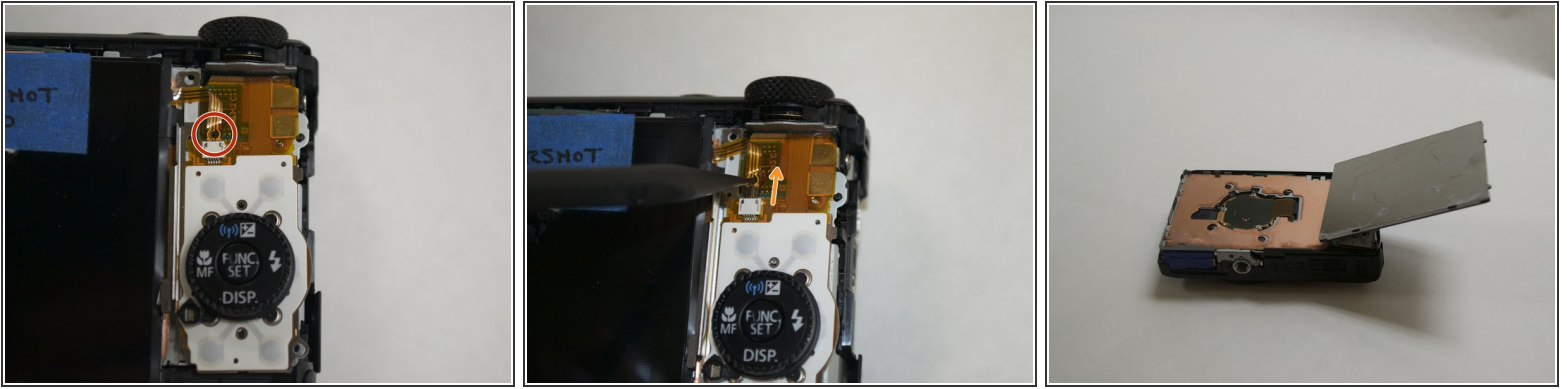
- Once the screws are removed, use a spudger to carefully detach the cover.

Step 4



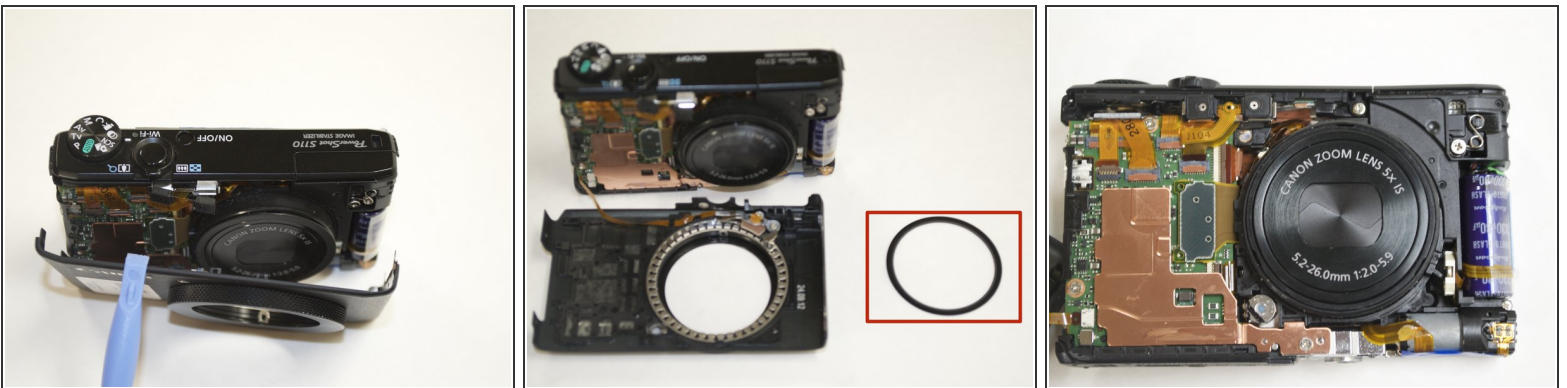
- Before we are able to remove the display, we must take off the mounting bracket that holds it in place.
- Remove the single screw indicated in red.
 - Detach the bracket and set it aside.
- In preparation for the next step, remove the screw indicated in yellow.

Step 5



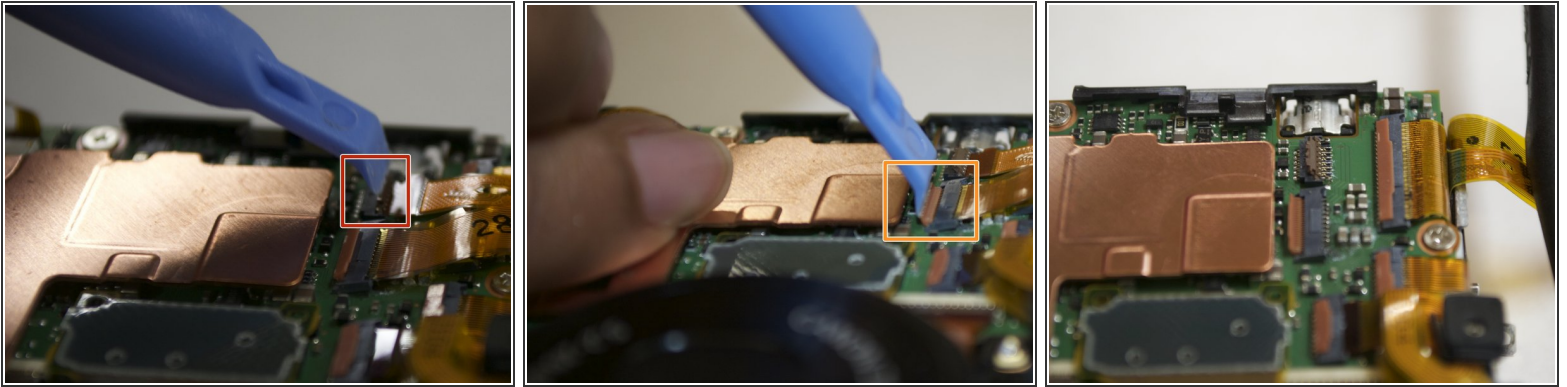
- To detach the first logic ribbon:
- Use a small, relatively soft pointed tool to slowly pull out the ribbon using the hole shown in the image.
- Completely remove the ribbon.
- The display is now partially disconnected from the back side of the camera.

Step 6



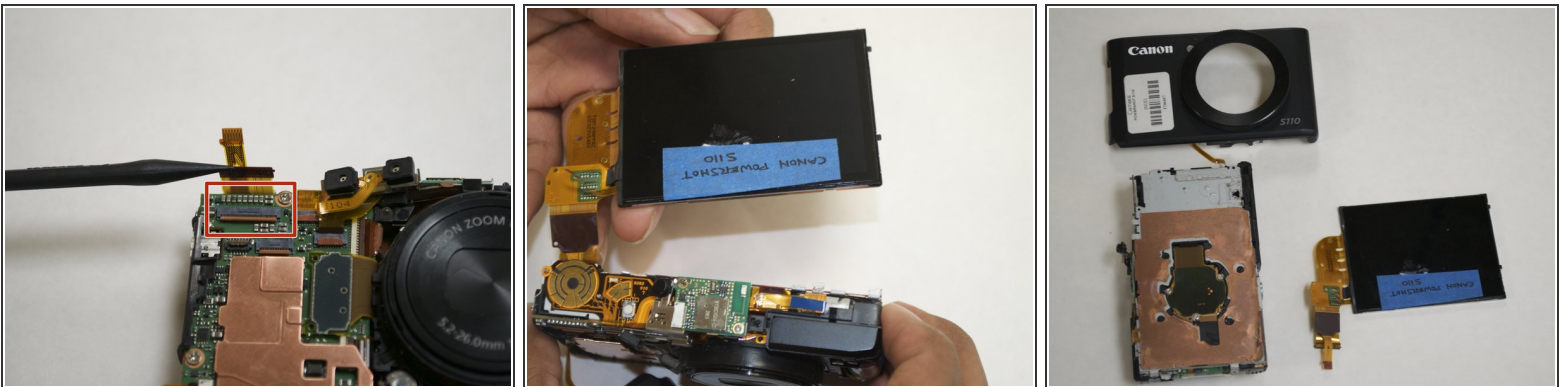
- To remove the front camera case in order to access the remaining ribbons:
- Slowly pry around the edges using a spudger.
- A circular ring pad will detach. Set this aside.
- You now have access to the logic ribbons on the front of the camera.

Step 7



- Using the spudger, flip the small tab that is holding down the logic ribbon located at the top left corner.
- Flip the larger tab that is holding down the logic ribbon located directly to the right of the previous ribbon.
- Detach both ribbons from the circuit board.

Step 8



- Flip the tab and remove the last ribbon.
- ⓘ This ribbon is revealed after Step 7.
- The display can now be lifted off the camera and the logic ribbons attached in the front can slide out.
- Prepare your replacement display and move on to reassembly.

Reassembly

To reassemble your device, follow these instructions in reverse order.