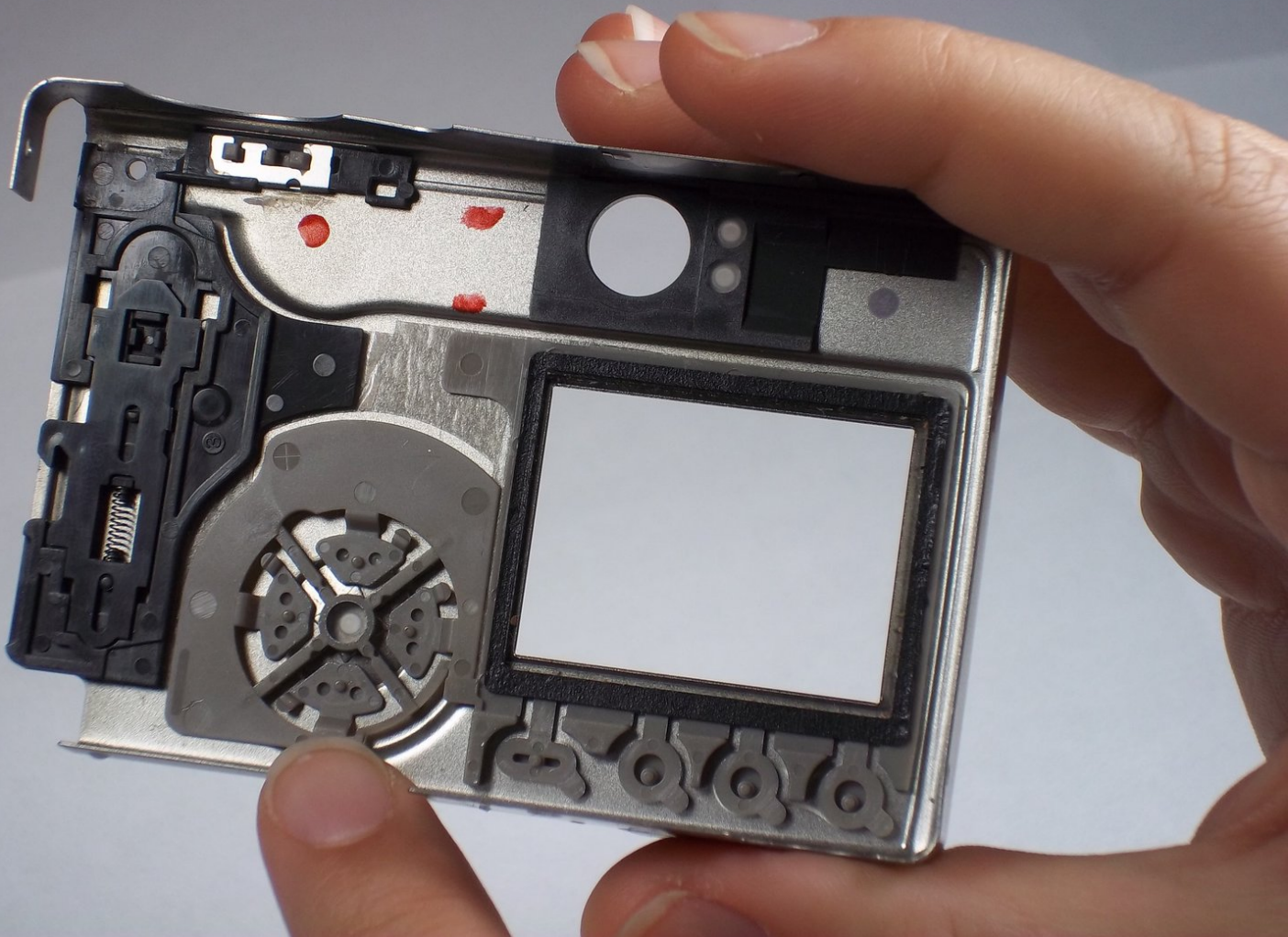




Canon PowerShot S230 Buttons Replacement

Viewing the buttons.

Written By: Alyssa Osberg



INTRODUCTION

This guide will show you how to get to the buttons to view them from inside the casing and to view the button sensors that are attached to the logic board.

TOOLS:

- [Phillips #00 Screwdriver](#) (1)
-

Step 1 — Battery



- On the bottom of the camera, use your thumb to press the rubber battery cover towards the side of the camera with the strap base. The cover will shift to extend beyond the rest of the camera.

Step 2



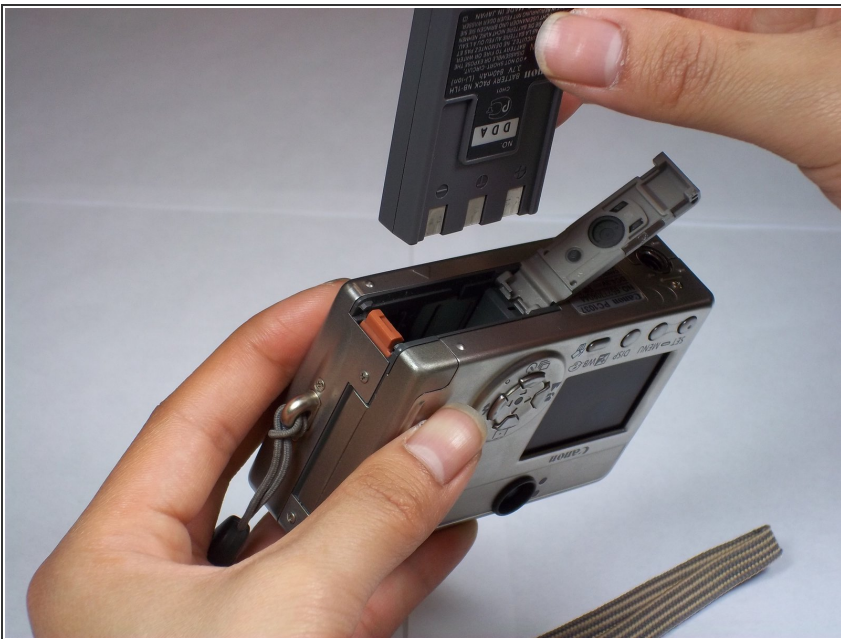
- Hold the end of the battery cover that extends beyond the camera and lift it up.

Step 3



- Pull back on the orange tab to release the battery.

Step 4



- Pull the battery out.

Step 5 — Memory Card



- Locate the sliding button labeled "CF open" on the back of the camera.
- Press and slide down the button labeled "CF open". The memory card cover will pop open.

Step 6



- Push down on the black square button next to the memory card slot. This will release the memory card from the slot.

Step 7



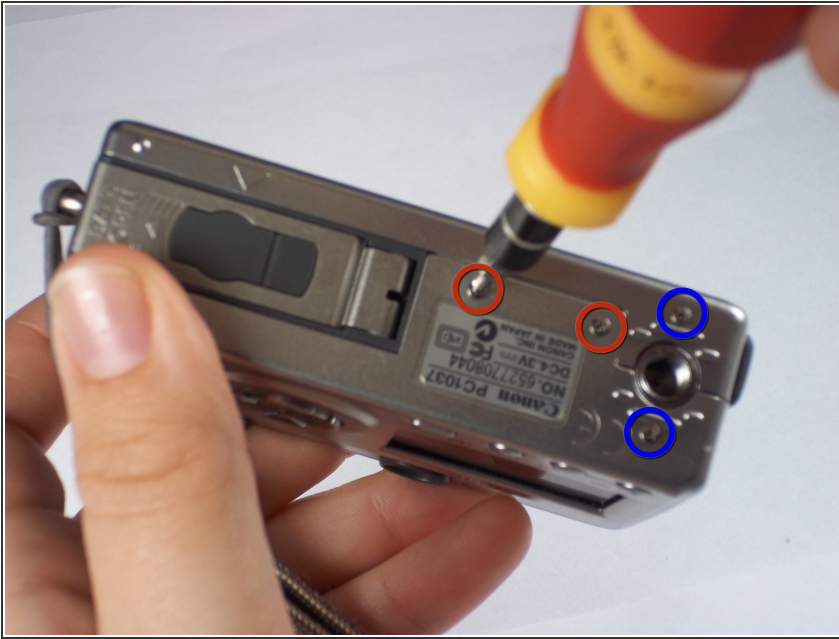
- Pull the memory card out of the memory card slot.

Step 8 — Camera Casing



- Remove two 2.4mm Phillips screws from the right side of the camera.

Step 9



- Remove two 2.4mm Phillips screws above the label on the bottom of the camera.
- Remove two 2.8mm Phillips screws next to the tripod hole.

Step 10



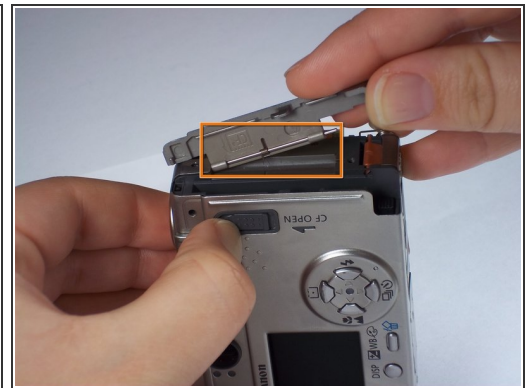
- Remove the two 3.2mm Phillips screws that are closer to the top and bottom edges of the camera.
- Remove the two 3.8mm Phillips screws on either side of the strap base.

Step 11



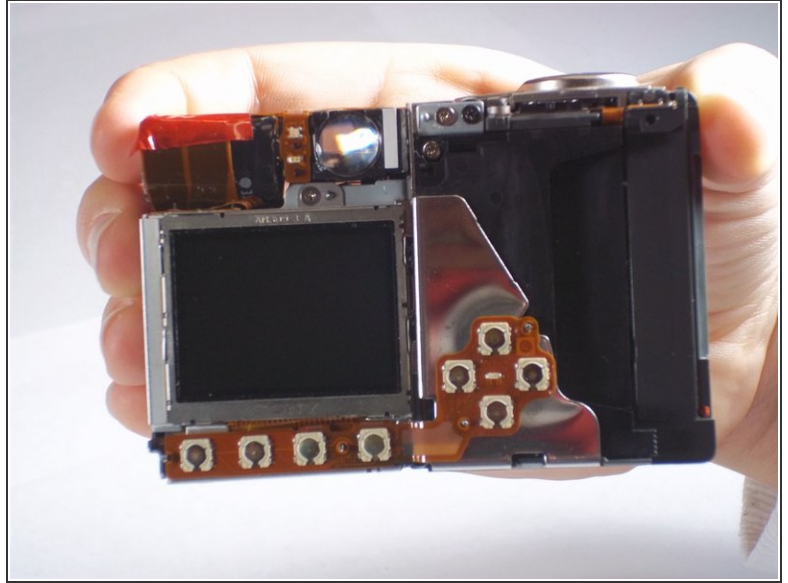
- Remove one 1.6mm Phillips screw from the above the CF open button on back of the camera.

Step 12



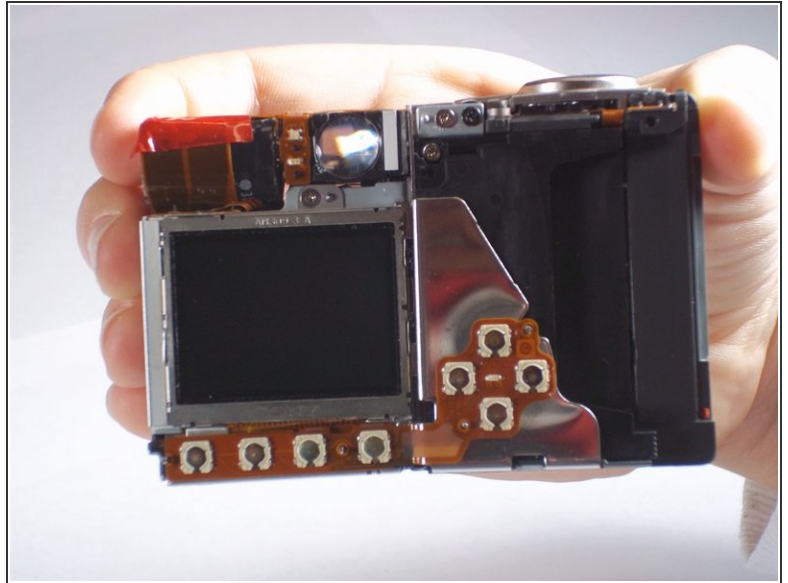
- Gently pull the front casing from the camera.
- ⓘ The following items will either fall off or will be loose: the strap base, the gray rubber cover labeled "Digital A/V Out", and the black rubber piece over the view finder.
- Remove the memory card cover by sliding down the CF open button and moving the pin.

Step 13



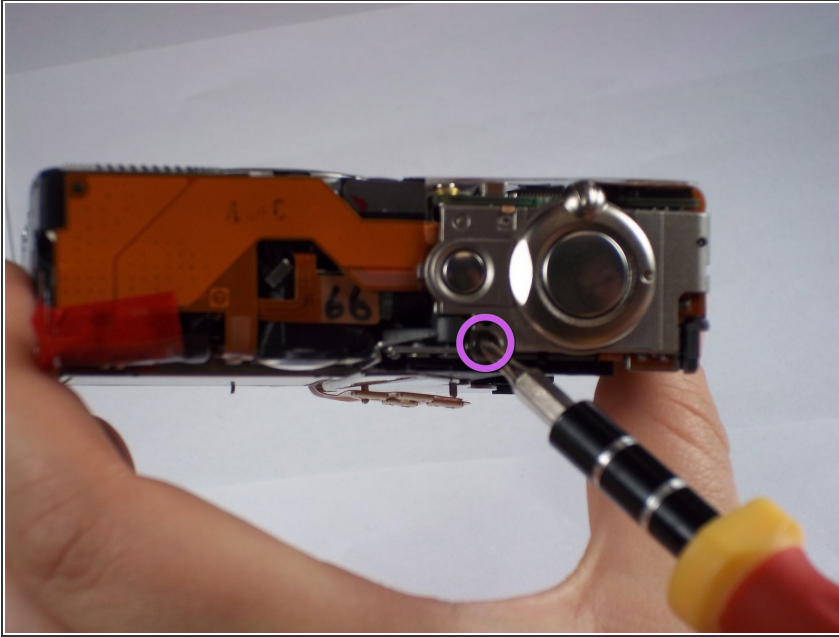
- Gently pull the back casing from the camera.

Step 14 — Buttons



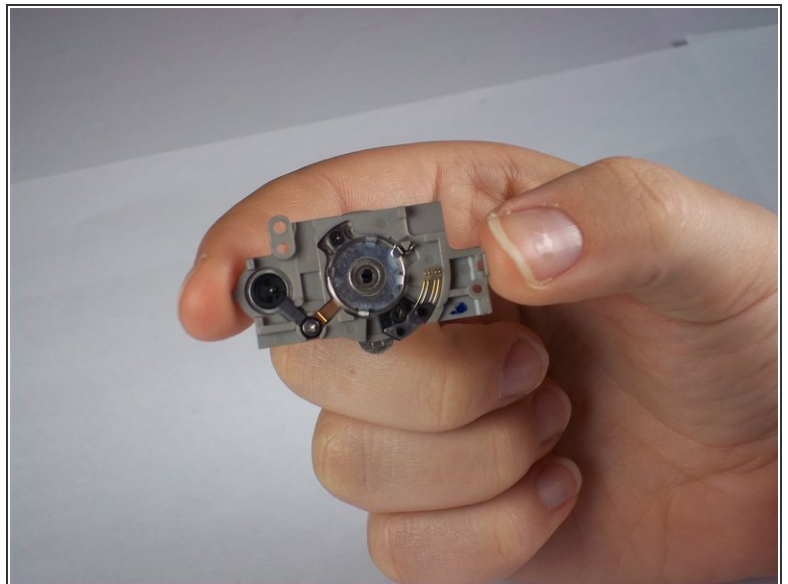
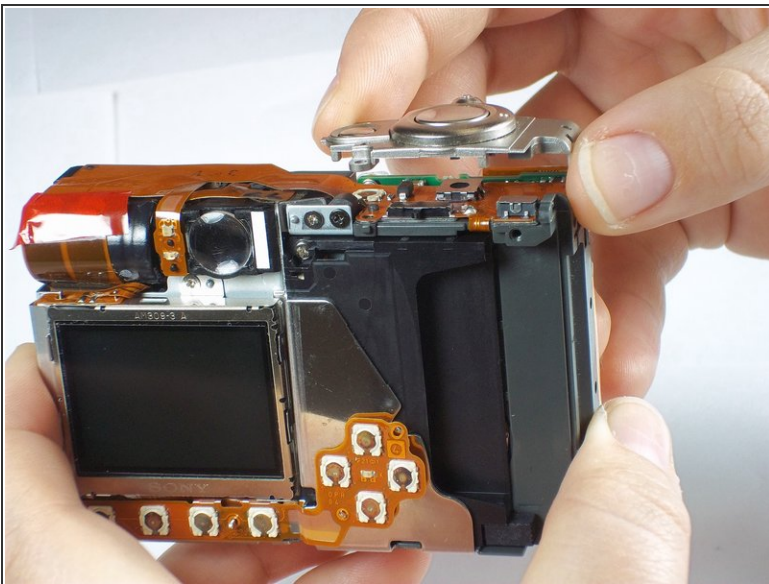
- Locate the reverse side of the buttons by looking at the inside of the back camera casing.
- Locate the button sensors, which connect to the logic board by a connecting ribbon, by looking at the back of the camera once the back casing has been removed.
- ⓘ The button sensors on the back of the camera should appear to match up with the reverse side of the buttons on the inside of the back camera casing. Imagine one as being the reverse image, or mirror image, of the other. This will help you locate where a problem is occurring if a button or a button sensor has been damaged.

Step 15



- Remove one 4.3mm screw directly below the power button on the top of the camera.
- ⓘ This screw attaches the entire panel for the power and picture-taking buttons. Be sure you are removing the screw from the top of the camera, as it is close to another screw on the back side of the camera.

Step 16



- Gently lift the button panel from the top of the camera.
- This is what the reverse side of the button panel looks like after removal.

To reassemble your device, follow these instructions in reverse order.