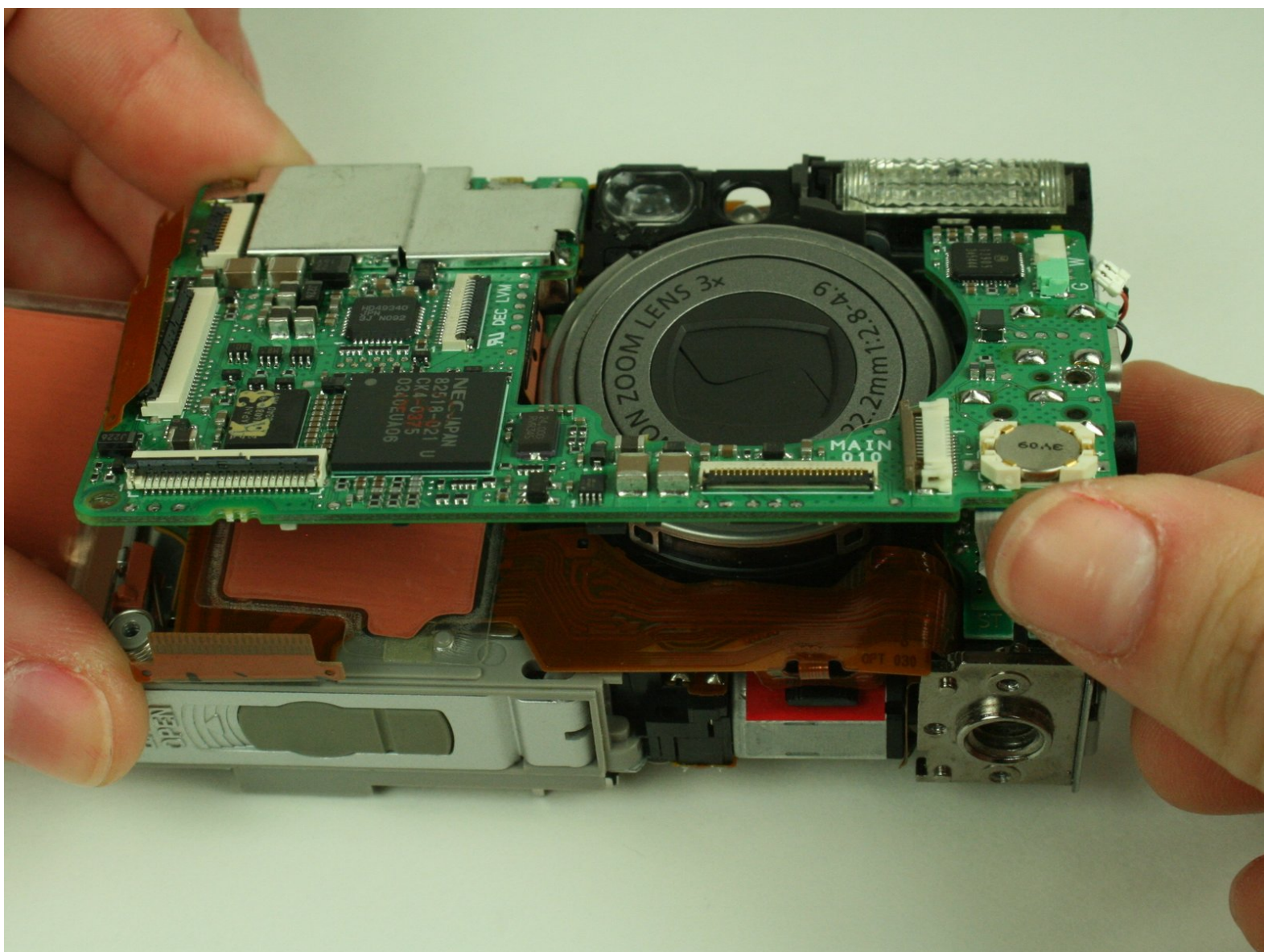




Canon PowerShot S400 Motherboard Replacement

Replacing the motherboard in the Canon PowerShot S400.

Written By: Ross Bryan



INTRODUCTION

This guide illustrates how to replace the motherboard in the S400.



TOOLS:

- [Phillips #00 Screwdriver](#) (1)
 - [Soldering Workstation](#) (1)
 - [Spudger](#) (1)
-

Step 1 — LCD Screen



i Unless stated otherwise, use a Phillips #00 screwdriver to remove all screws.

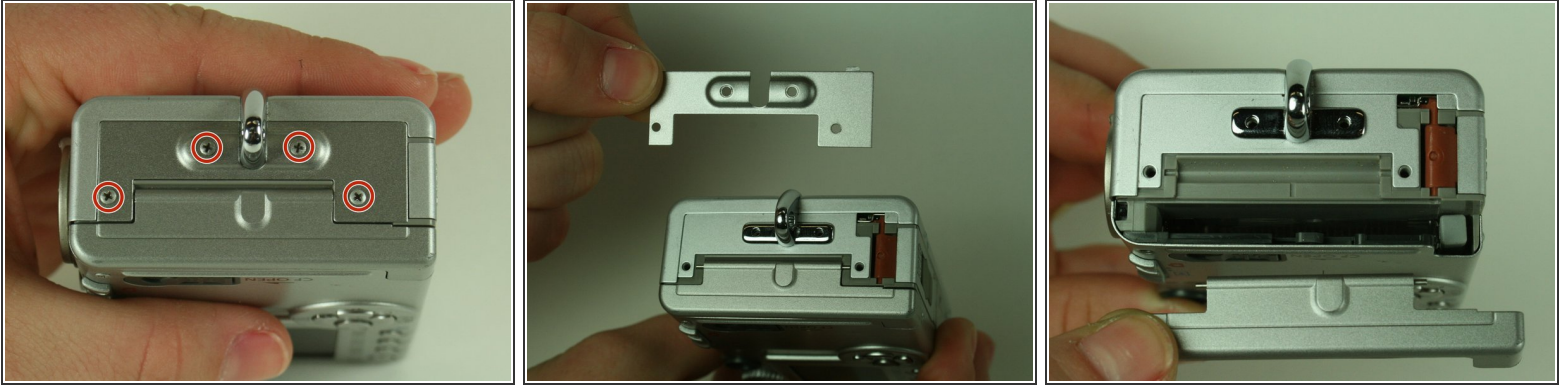
- On the backside of the camera, remove the 4.75 mm screw that sits at the top right corner.
- Remove the four 4.75 mm screws that sit at the bottom of the camera.

Step 2



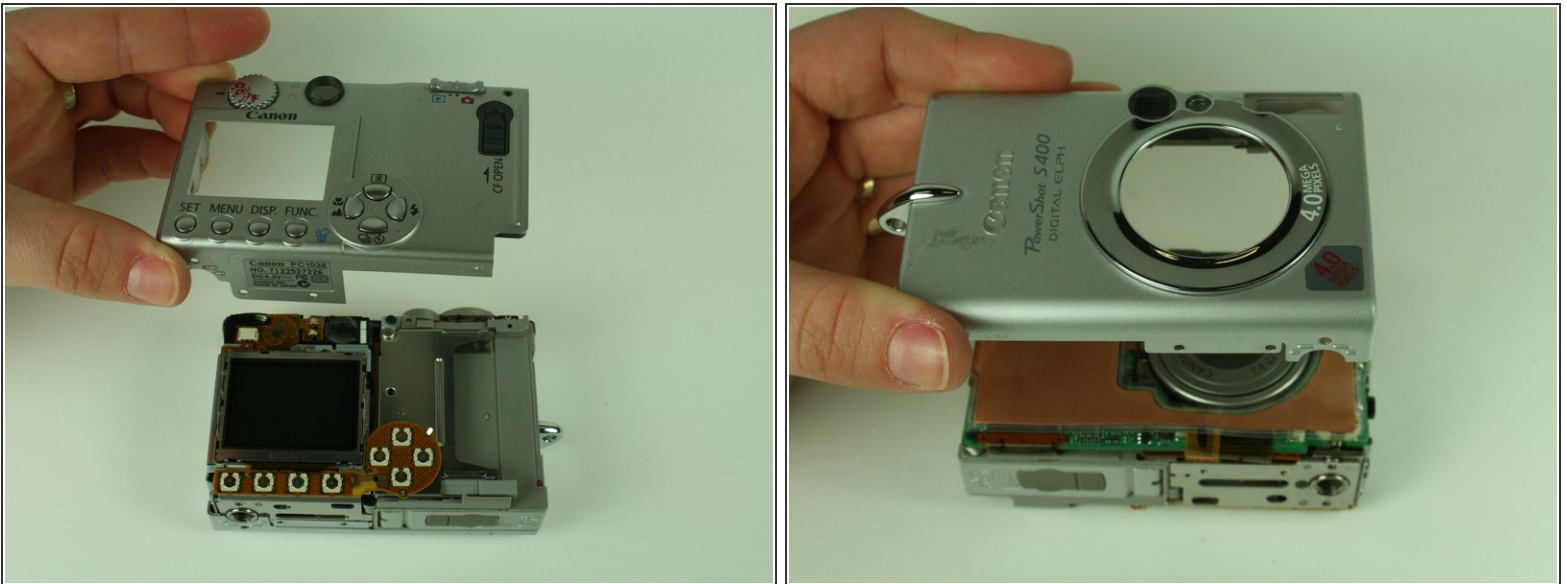
- On the side of the camera, remove the two 4.75 mm screws that sit near the USB digital terminal.


Step 3



- On the side of the camera, remove the four 4.75 mm screws that sit near the wrist strap mount.
- Remove the two small metal plates, which the four screws hold in place.

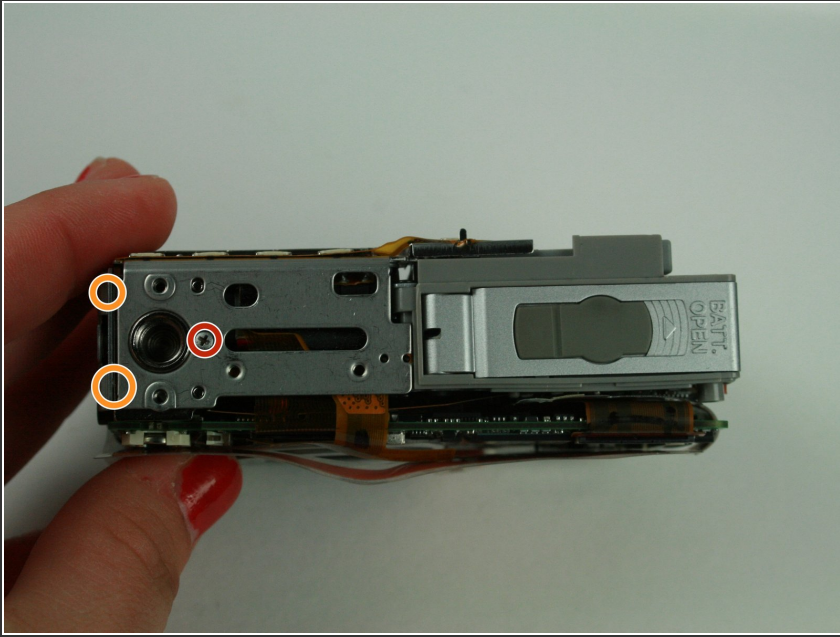
Step 4



 When removing the casing, do not drop the small black plastic piece. This piece sits in a small gap above the lens, to the left of the flash, and underneath the camera case.

- Remove the small black plastic piece and set it aside. If necessary, use tweezers to remove the small black plastic piece.
- Detach the front case and back case.

Step 5

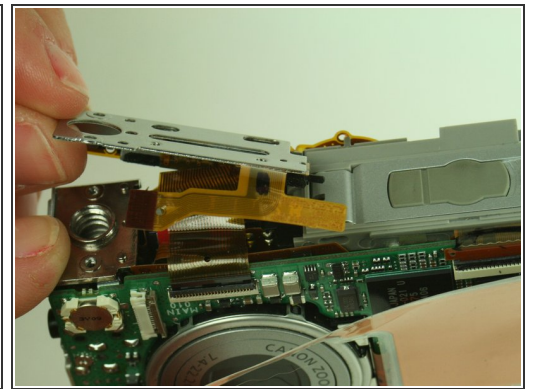
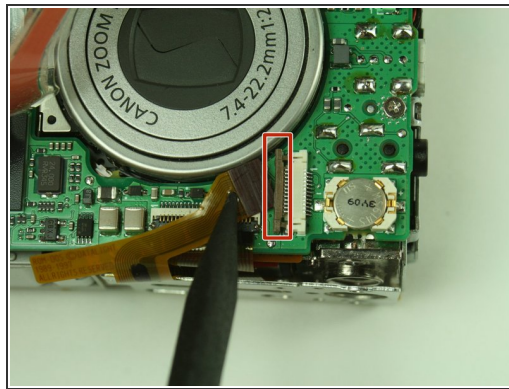
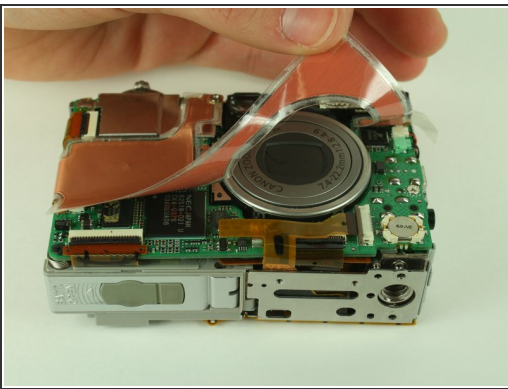


⚠ Do not remove the metal plate this step refers to. Removal at this step may damage the ribbon cable. Wait until the next step to remove the plate.

- Remove the 3.5 mm screw that sits on the metal plate at the bottom of the camera.
- Remove the two other 3.5 mm screws that sit on the side, to the left of the screw you just removed.

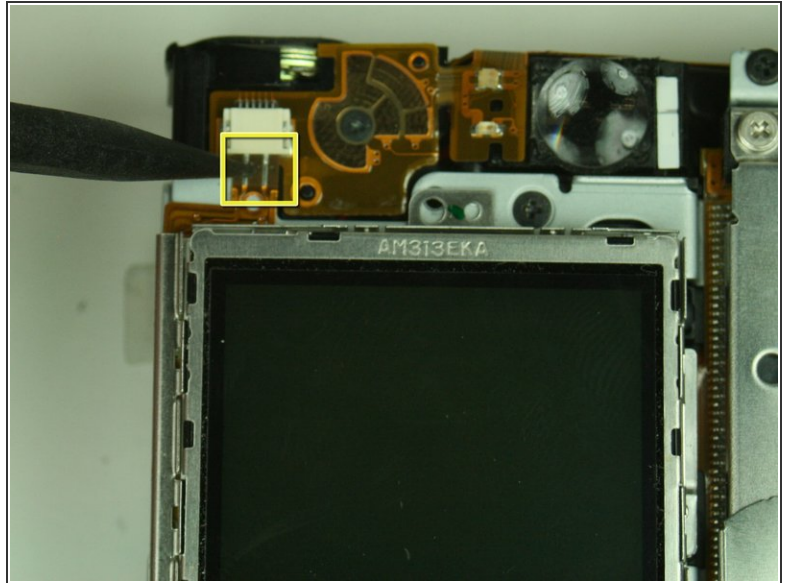
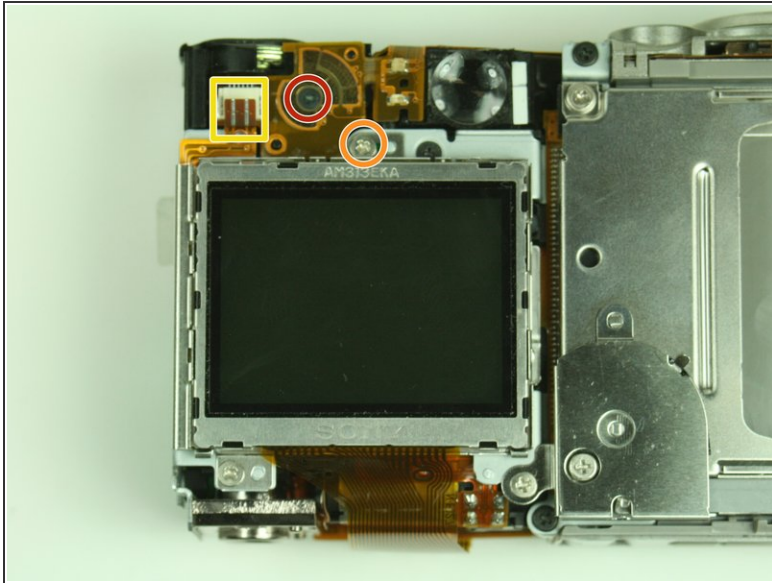
i In the image, we have already removed some of the screws.

Step 6



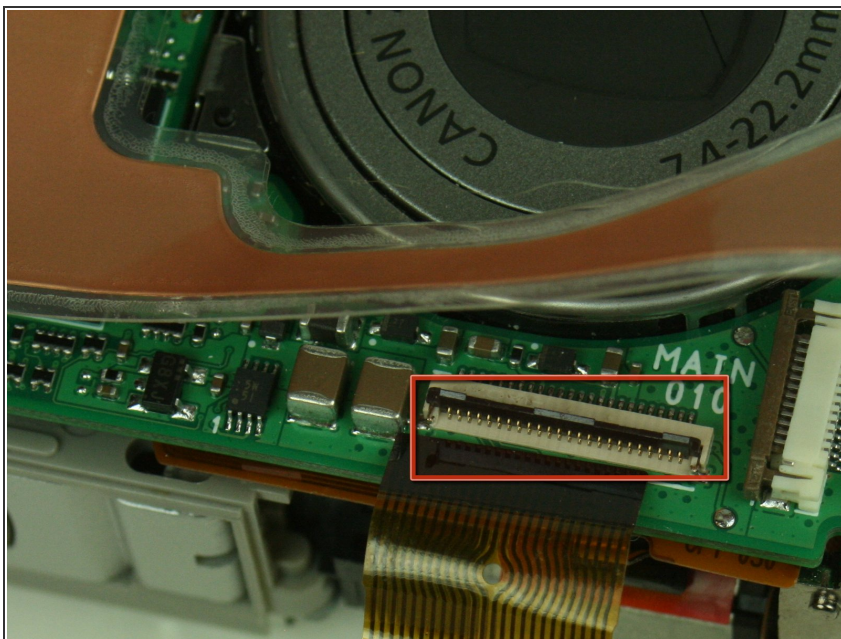
- A ribbon cable attaches to the metal plate and to the main circuit board, on the front of the camera.
- Gently release the black latch.
- Remove the ribbon cable and metal plate assembly.

Step 7



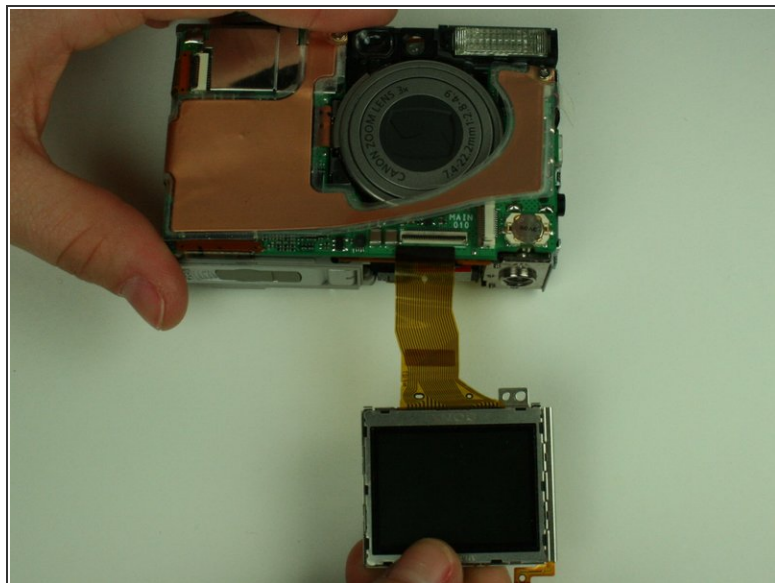
- On the backside of the camera, remove the 3.5 mm screw that sits to the left of the viewfinder and above the LCD screen.
- Remove the second 3.5 mm screw that sits directly above the LCD screen.
- Gently detach the ribbon cable.

Step 8



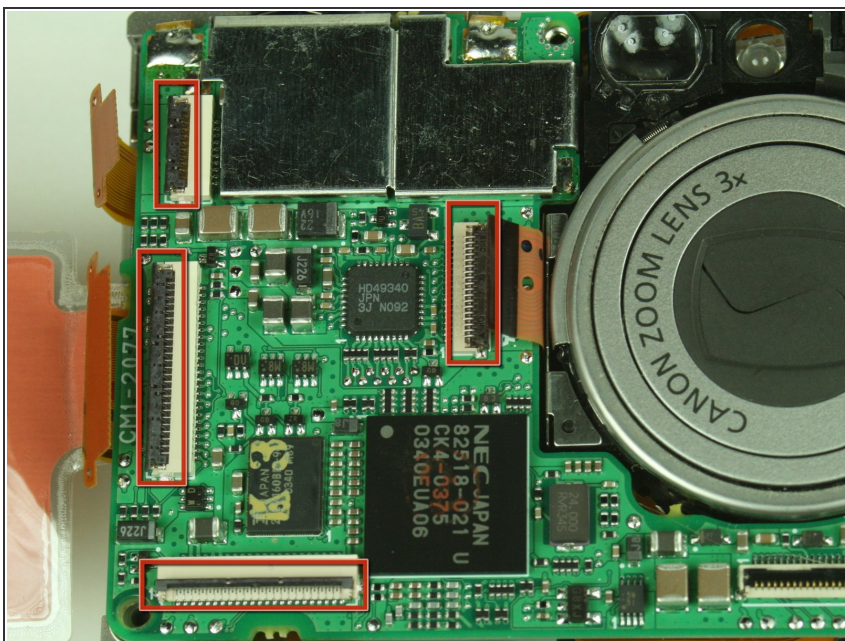
- Locate the ribbon cable on the main circuit board, which sits below the lens.
- Gently release the black latch on the ribbon cable connector and detach the ribbon cable.

Step 9



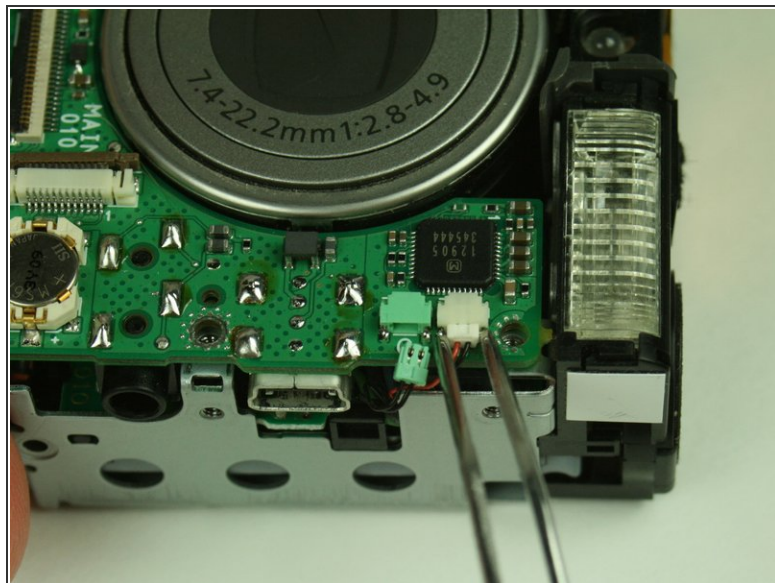
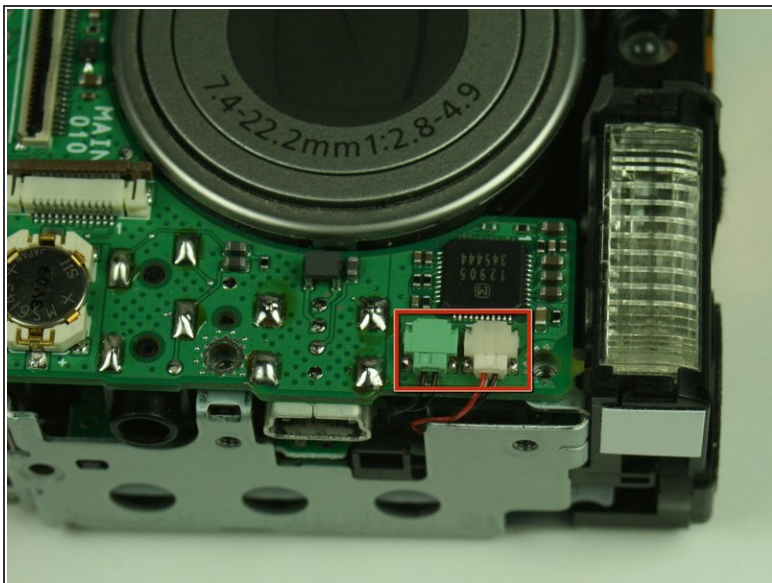
- Remove the LCD screen and set it aside.

Step 10 — Motherboard



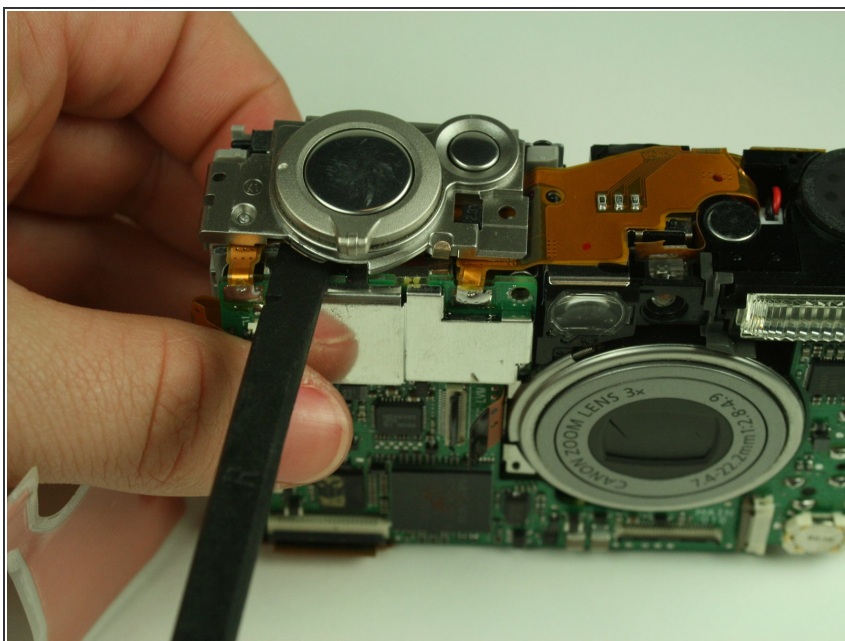
- On the main circuit board, gently release the black latches of the four ribbon cables.
- Gently detach the ribbon cables.

Step 11



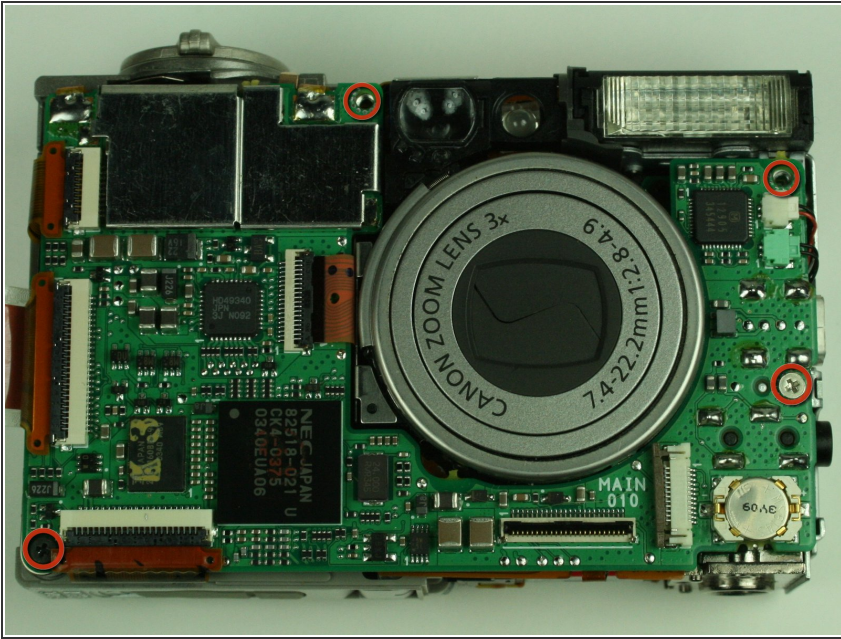
- Detach the white-capped and green-capped wires, which sit near the flash.

Step 12



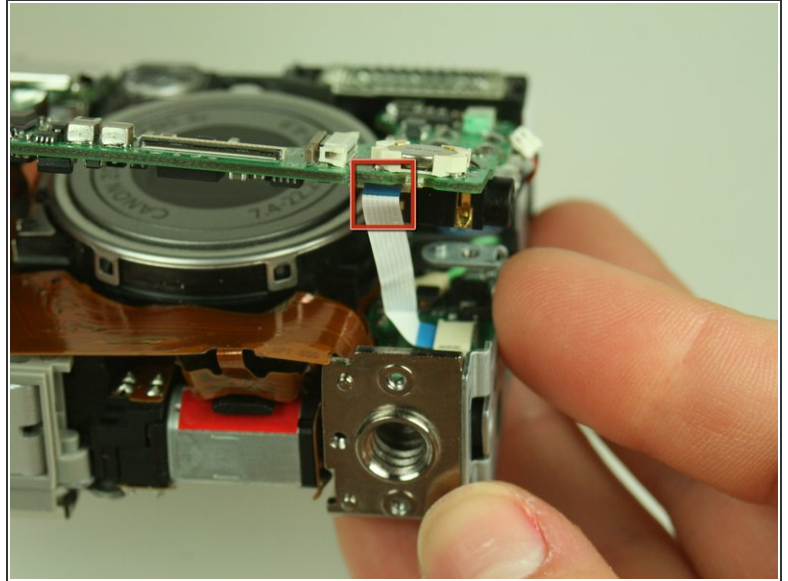
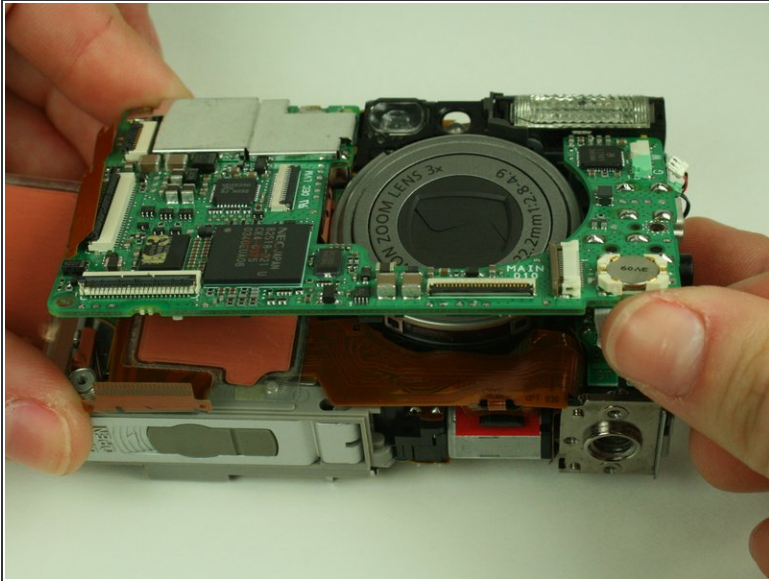
- Using a spudger, gently detach the shutter button assembly from the camera.


Step 13



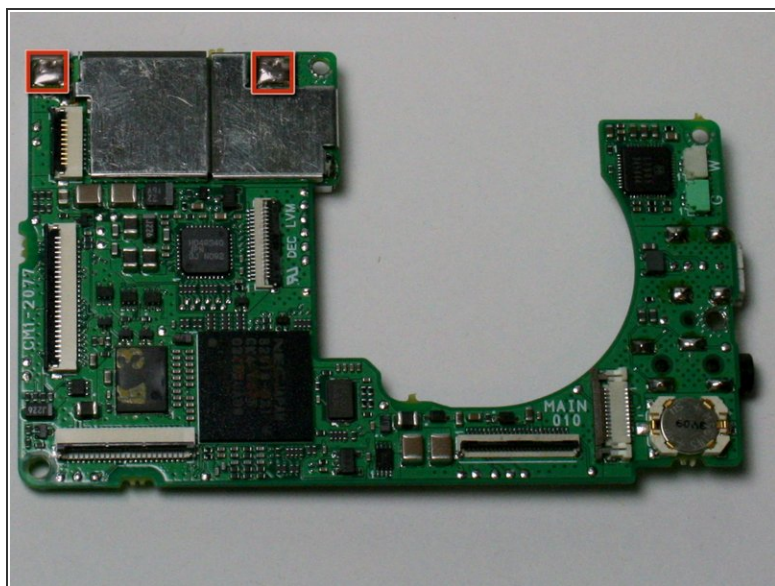
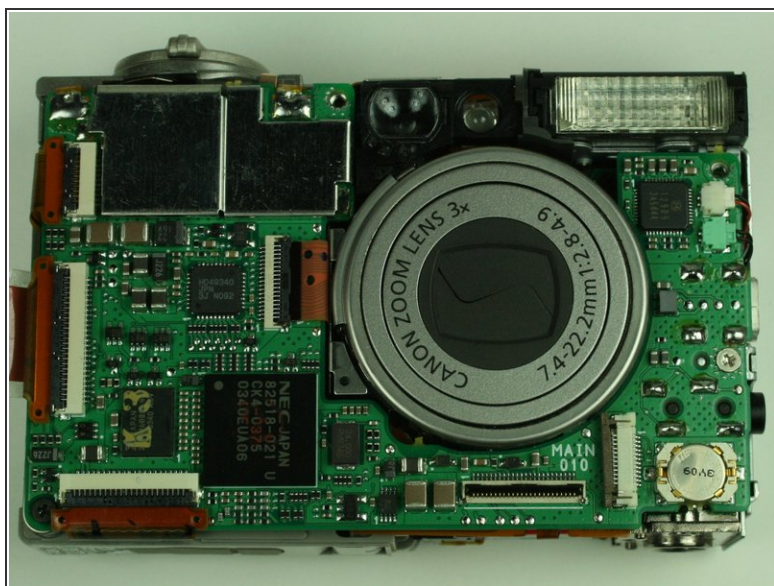
- Remove the four 3.5 mm screws that hold the main circuit board.
- ⓘ In the image, we have already removed some of the screws.
- ⚠ Do not remove the main circuit board yet.


Step 14



-  Do not completely remove the main circuit board from the camera. A soldered ribbon cable still attaches the board to the camera. Complete removal would break the soldering points.
- In a hinge-like motion, gently lift the bottom of the main circuit board, which is the side without the soldering points.
 - Gently detach the white ribbon cable from the underside of the main circuit board.

Step 15



 Do not attempt this next step unless you have soldering experience and feel comfortable desoldering. Otherwise you may damage the camera.

- Gently desolder the two ribbon cables attached to the motherboard.
- Remove the motherboard.

To reassemble your device, follow these instructions in reverse order.