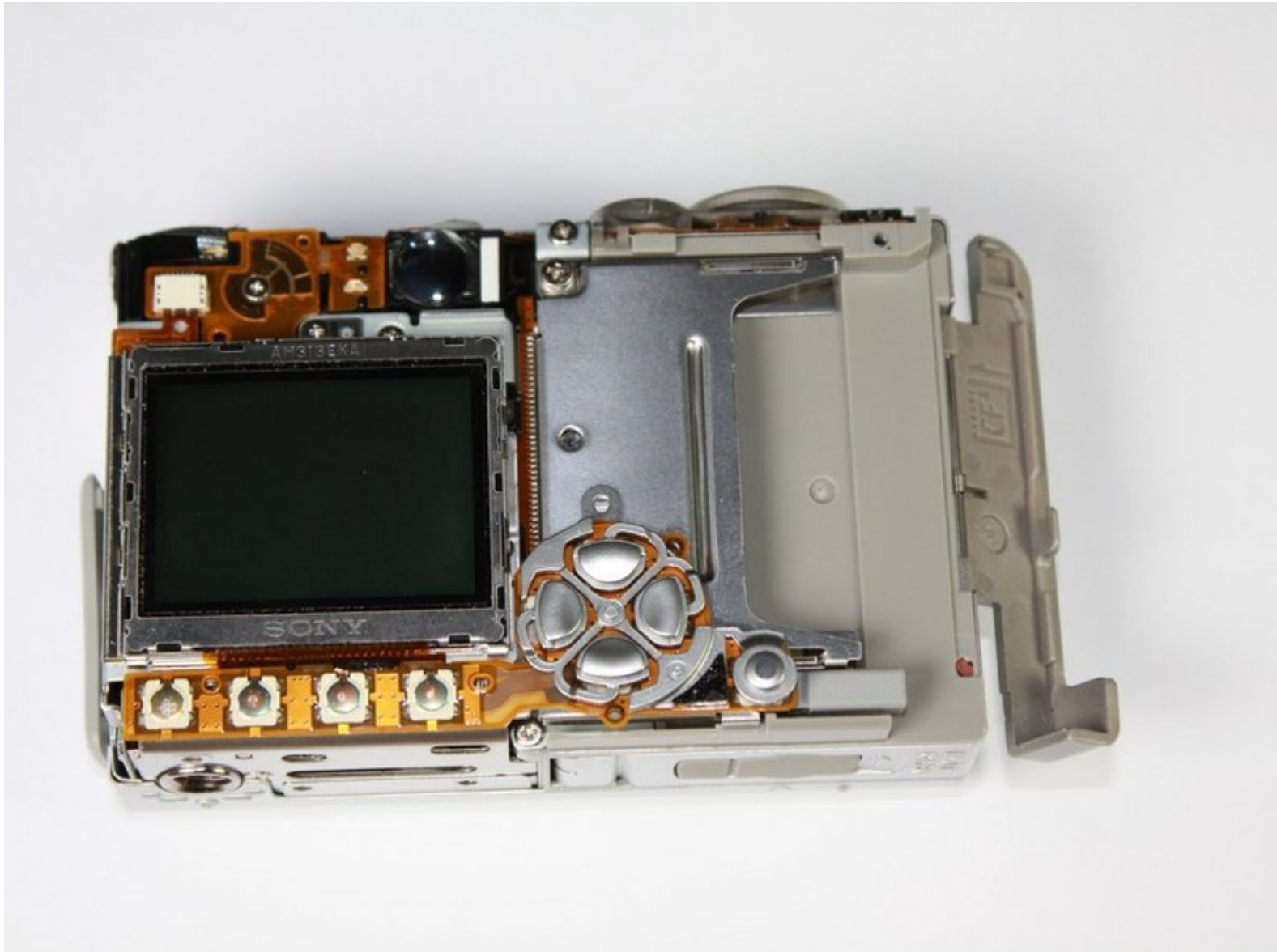




Canon PowerShot S410 LCD Screen Replacement

This repair guide will help you install a broken LCD in your Canon PowerShot S410.

Written By: kubayubay



INTRODUCTION

This installation guide will help you remove your broken LCD and install in a new replacement.



TOOLS:

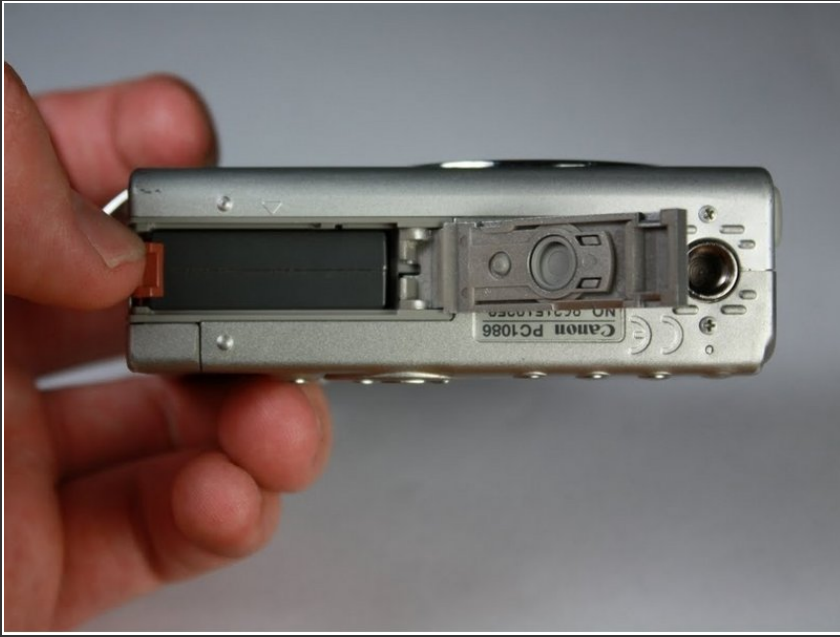
- [Phillips #0 Screwdriver](#) (1)
 - [Tweezers](#) (1)
-

Step 1 — Battery



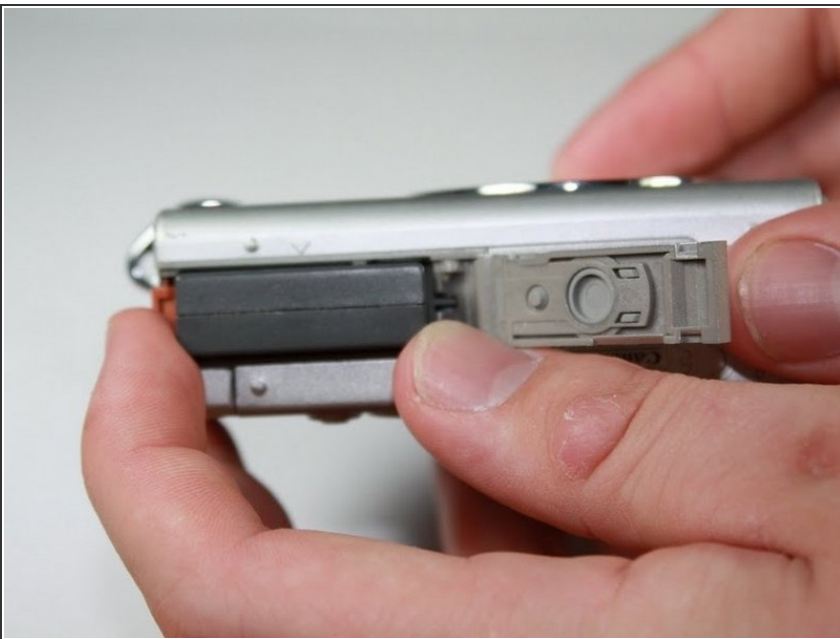
- ① Turn the camera with the bottom side facing up.
 - Locate the panel labeled "Batt. Open"
 - Place your finger on the panel and slide it in the direction of the arrow.
 - The slot will swing open revealing the battery pack.

Step 2



- ① Rotate the camera so that the slot is horizontal.
- Pull the orange lever and the battery will spring out slightly.

Step 3



- Grasp battery and fully pull out of slot
- ① When placing the new battery back in the slot, the arrow on the battery must align with the arrow on the camera.

Step 4 — Back Cover



- ① Start by laying the camera flat with the LCD screen facing up.
- Remove the 3.8mm screw in the upper right corner.

Step 5



- ① Position the camera with the bottom facing up.
- Remove the 4.8mm screw.
- Remove the two 2.3mm screws.

Step 6



- ① Position the camera so that the rubber "AV Out Digital" tab is facing upward.
- Slide this rubber tab out of the way to reveal the bottom screw.
- Remove the two 3.7mm screws.


Step 7



- ① Turn the camera with the back side facing you.
- Grip the edges of the back plate, and carefully slide it off.
- ⚠ If there is any resistance in movement, double check there are no screws left in the chassis.

Step 8 — Front Cover



-  Orientate the camera as in the picture.
- Remove the two 2.3mm outer screws.
 - Remove the two 3.8mm screws near the strap bracket.
 - Remove small panel covering mounting bracket.
 - Remove door covering memory card.

Step 9



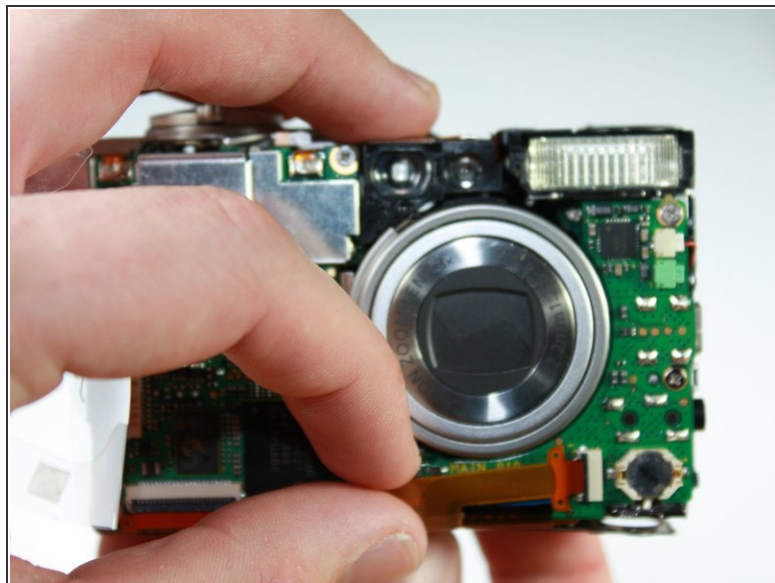
- ① Rotate the camera so that the bottom side is facing you.
- Remove the 3.8mm screw below the mounting bracket.

Step 10



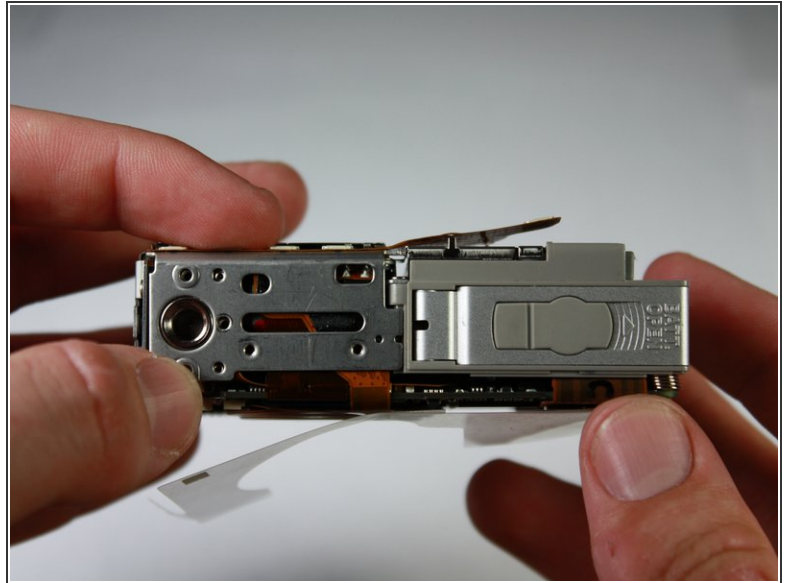
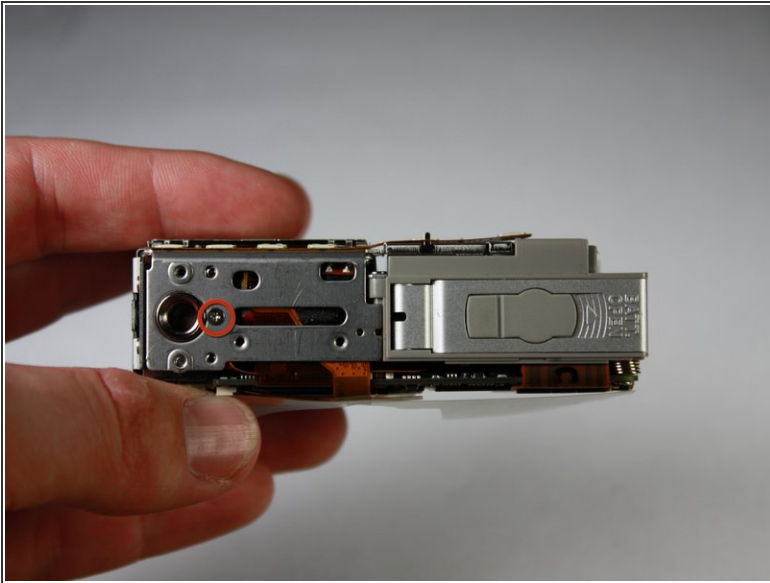
- ① Rotate the camera so that the front is facing you.
- Grasp sides of front cover and carefully pull the front panel off of the camera.

Step 11 — LCD Screen



- ① Position the camera so that the motherboard is facing you.
- Remove the plastic flap covering the motherboard.
- Using your fingernail, open the black clip holding the ribbon cable.
- Grab the ribbon cable and carefully pull it out of slot.

Step 12



- ① Turn the camera so that the bottom side is facing you.
- Remove the 2.1mm screw.
- Grab the sides of the bottom panel and lift it up to expose the ribbon cable.

Step 13



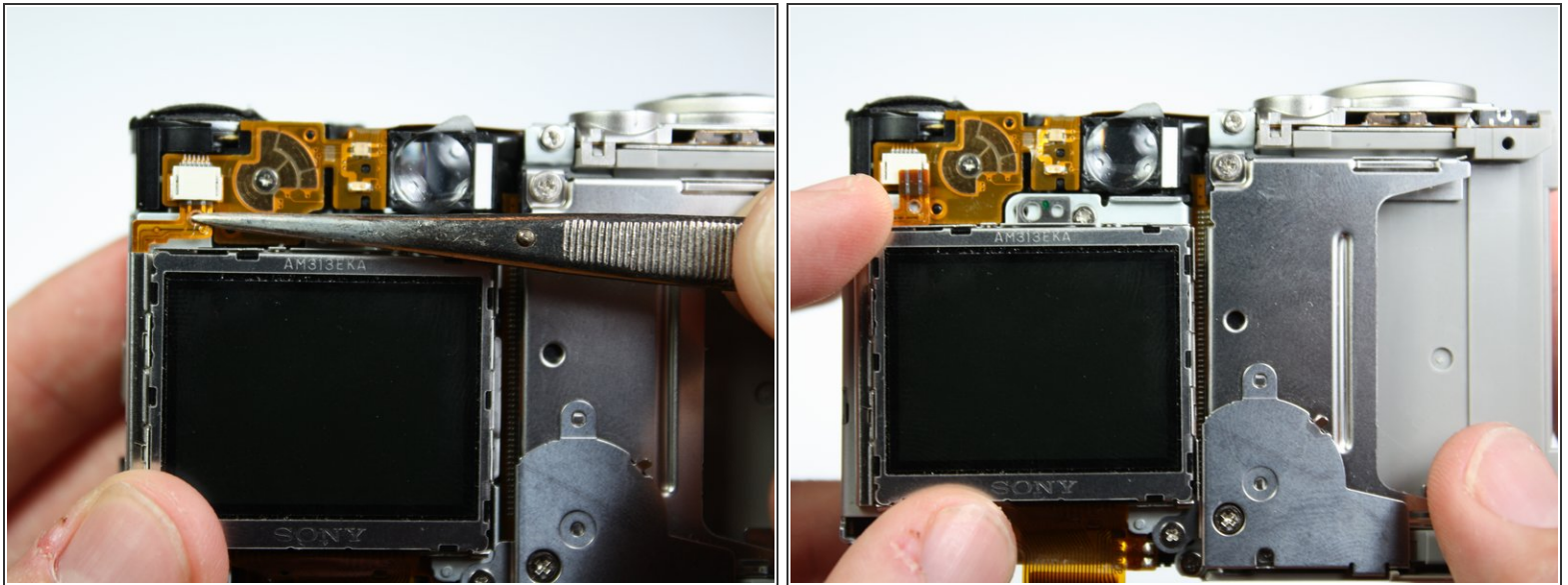
- ❗ Turn the camera so that the motherboard is facing you.
 - Using your fingernail, open the black clip holding the ribbon cable.
 - Grab the ribbon cable and carefully pull it out of slot.

Step 14



- ❗ Turn the camera so that the LCD screen is facing you.
 - Remove the two 2.1mm screws on the aluminum tabs of the LCD screen.

Step 15



- Using a pair of tweezers, carefully pull the top ribbon cable out of the slot.
- Grasp sides of LCD screen and lift off of camera.

To reassemble your device, follow these instructions in reverse order.