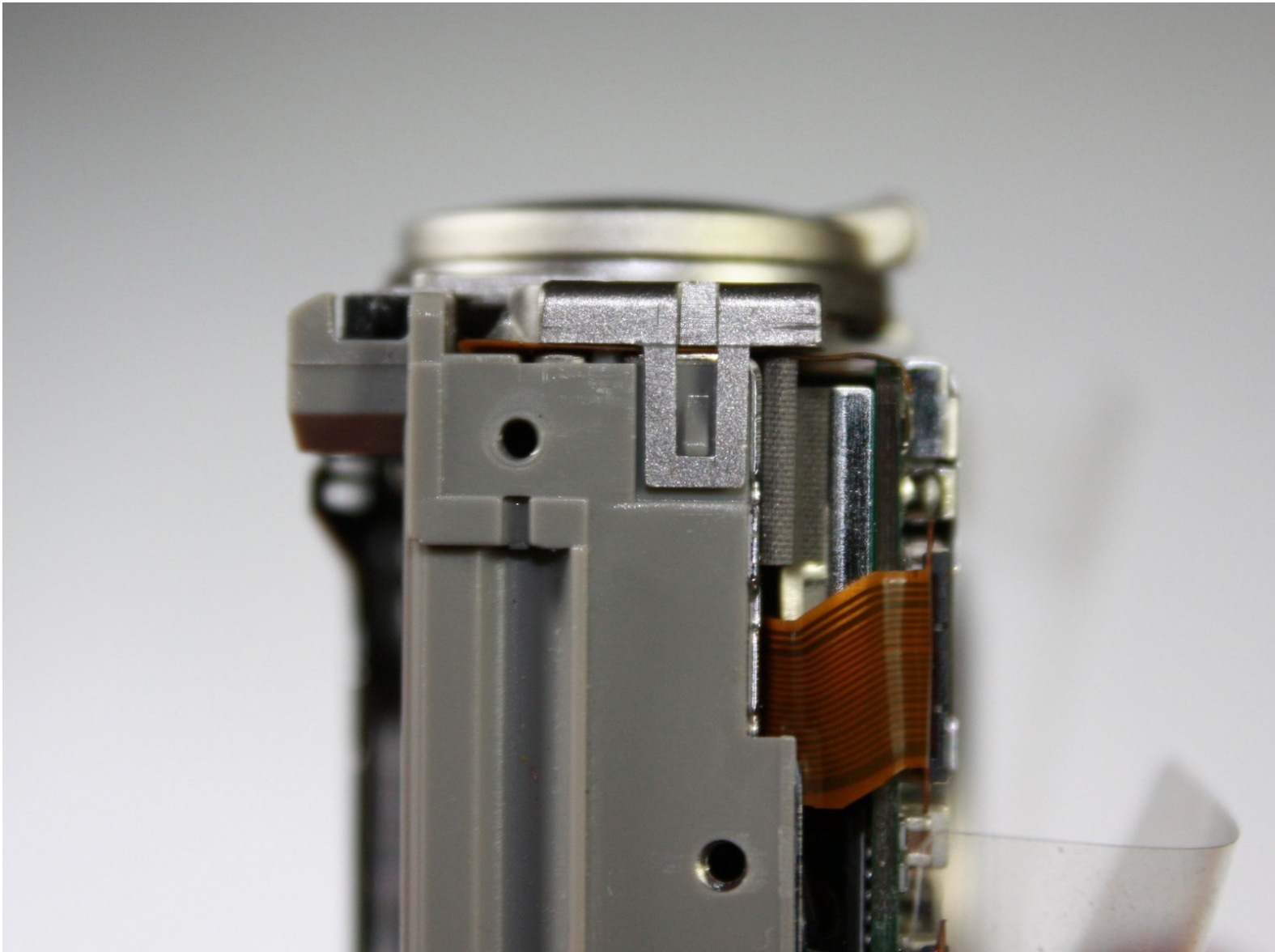




Canon PowerShot S410 Top Buttons Replacement

Removing the top "picture taking" button panel for cleaning or replacement.

Written By: Ryan Bolton



INTRODUCTION

This guide will show you how to remove and replace the button panel on the top of the camera.



TOOLS:

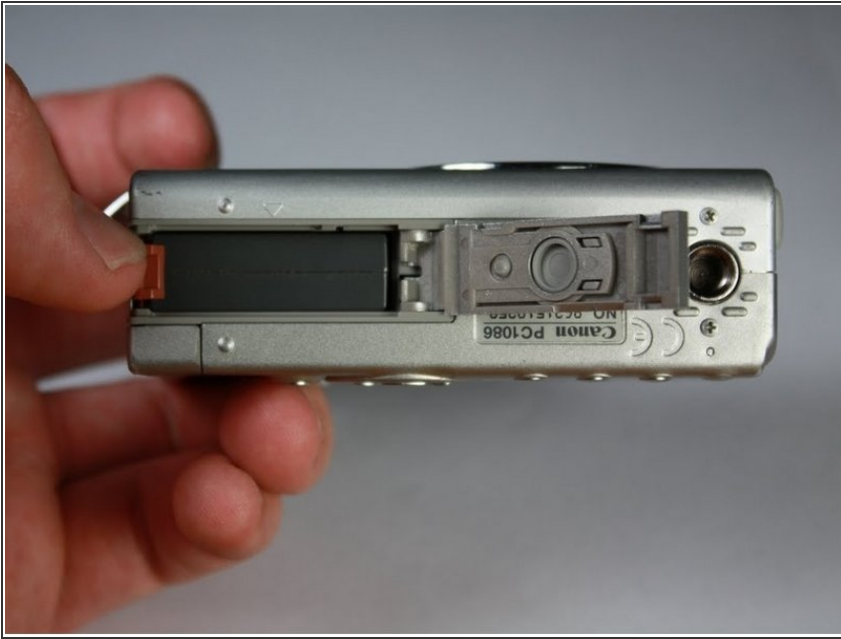
- [Phillips #00 Screwdriver](#) (1)
-

Step 1 — Battery



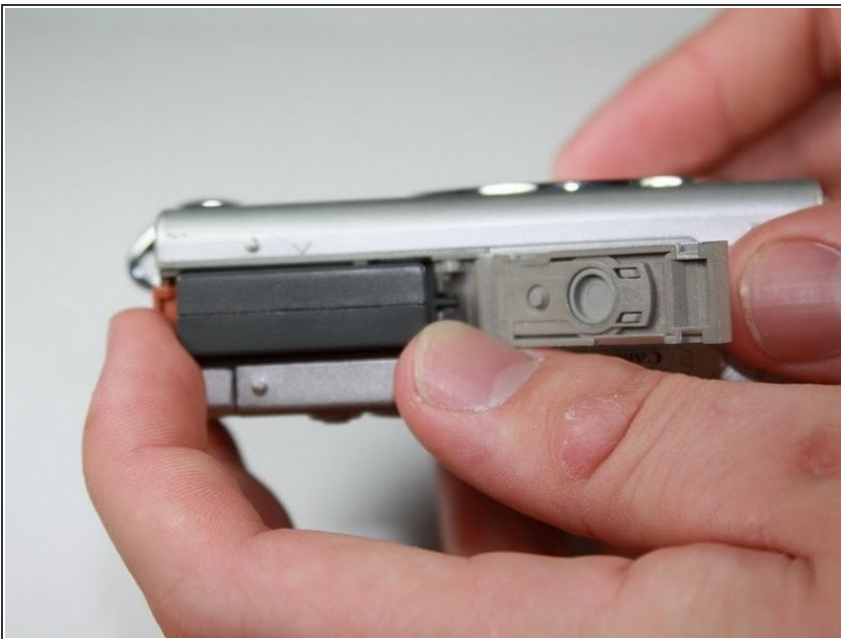
- ① Turn the camera with the bottom side facing up.
 - Locate the panel labeled "Batt. Open"
 - Place your finger on the panel and slide it in the direction of the arrow.
 - The slot will swing open revealing the battery pack.

Step 2



- ① Rotate the camera so that the slot is horizontal.
- Pull the orange lever and the battery will spring out slightly.

Step 3



- Grasp battery and fully pull out of slot
- ① When placing the new battery back in the slot, the arrow on the battery must align with the arrow on the camera.

Step 4 — Back Cover



- ① Start by laying the camera flat with the LCD screen facing up.
- Remove the 3.8mm screw in the upper right corner.

Step 5



- ① Position the camera with the bottom facing up.
- Remove the 4.8mm screw.
- Remove the two 2.3mm screws.

Step 6



- ① Position the camera so that the rubber "AV Out Digital" tab is facing upward.
- Slide this rubber tab out of the way to reveal the bottom screw.
- Remove the two 3.7mm screws.


Step 7



- ① Turn the camera with the back side facing you.
- Grip the edges of the back plate, and carefully slide it off.
- ⚠ If there is any resistance in movement, double check there are no screws left in the chassis.

Step 8 — Front Cover



-  Orientate the camera as in the picture.
- Remove the two 2.3mm outer screws.
 - Remove the two 3.8mm screws near the strap bracket.
 - Remove small panel covering mounting bracket.
 - Remove door covering memory card.

Step 9



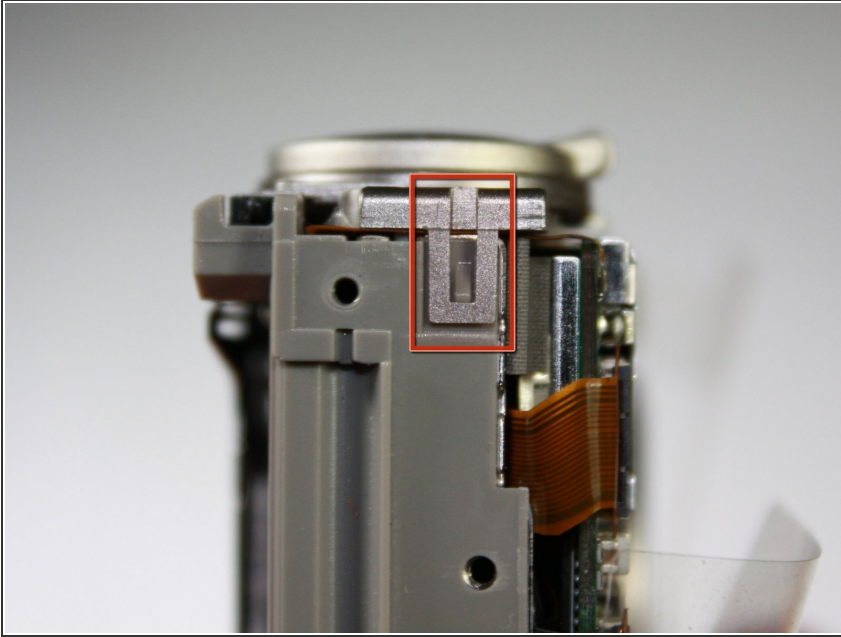
- ① Rotate the camera so that the bottom side is facing you.
- Remove the 3.8mm screw below the mounting bracket.

Step 10



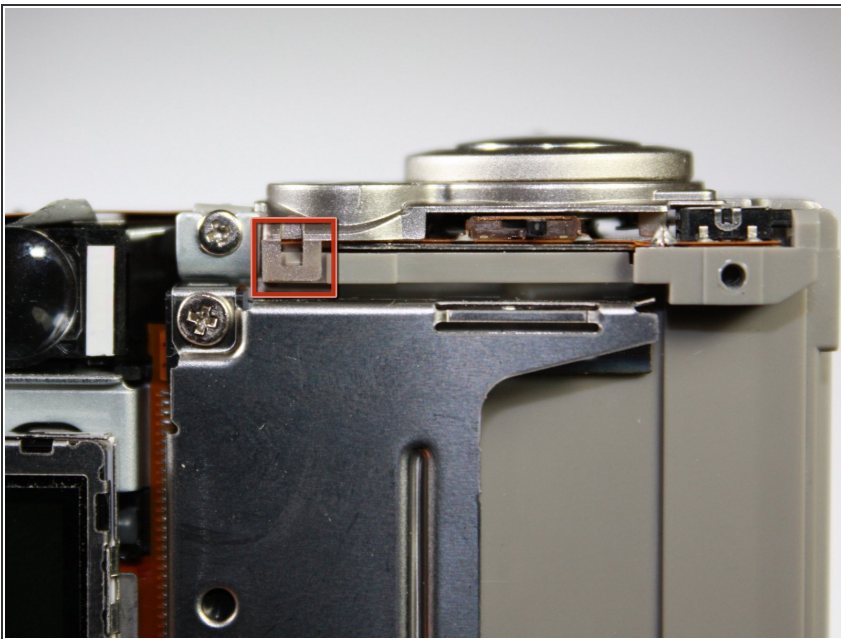
- ① Rotate the camera so that the front is facing you.
- Grasp sides of front cover and carefully pull the front panel off of the camera.

Step 11 — Top Buttons



- ① Turn the camera so that the right side is facing you.
- Using your fingernail, gently pry up the clip holding the button panel in place along the side of the camera.

Step 12



- ① Turn the camera so that the back side is facing you.
- Pry up this small clip with your fingernail.
- The button panel will dislodge from the top of the camera allowing you to remove and replace it.

To reassemble your device, follow these instructions in reverse order.