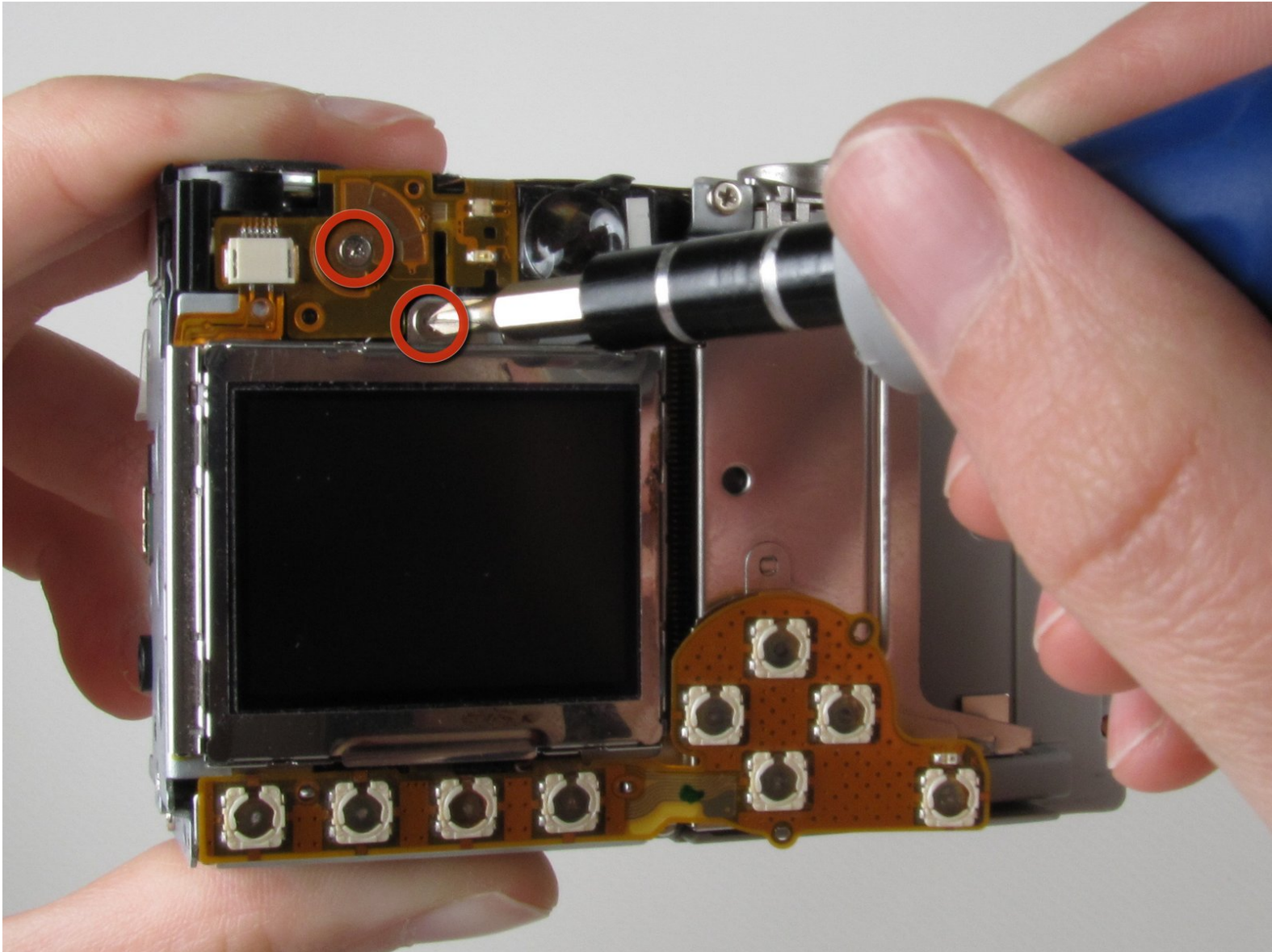




# Canon PowerShot S500 LCD Replacement

Written By: Nathan Balcom



---

## INTRODUCTION

This shows how to replace the LCD.



### TOOLS:

- [Phillips #0 Screwdriver](#) (1)
  - [Spudger](#) (1)
-

## Step 1 — Front and Rear Casing



- Unscrew five Phillips screws using a #0 Phillips screwdriver.
- ❗ One screw is on upper right corner of the back panel.
- ❗ The other four screws are on the bottom of the camera.

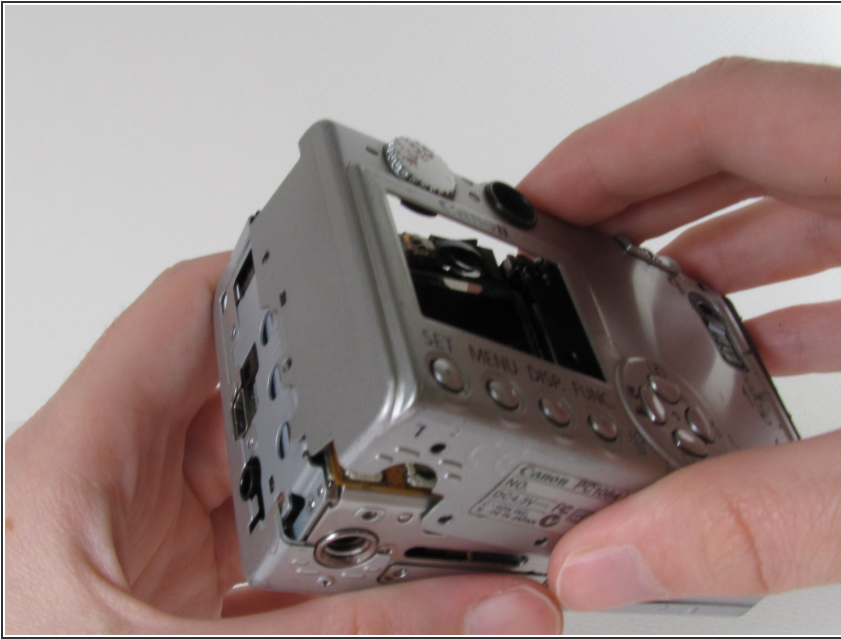
## Step 2



- Open the memory card cover by moving the slide switch toward the top end of the camera.
- Remove the memory card from the slot.

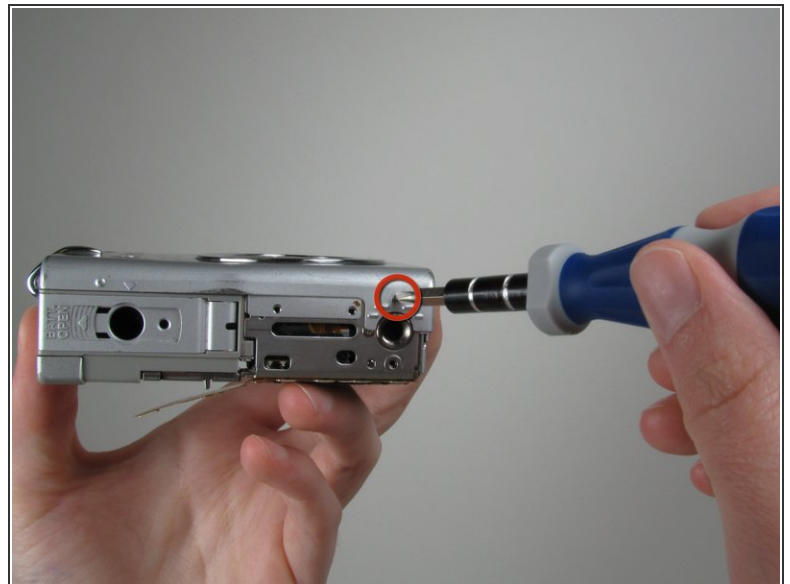
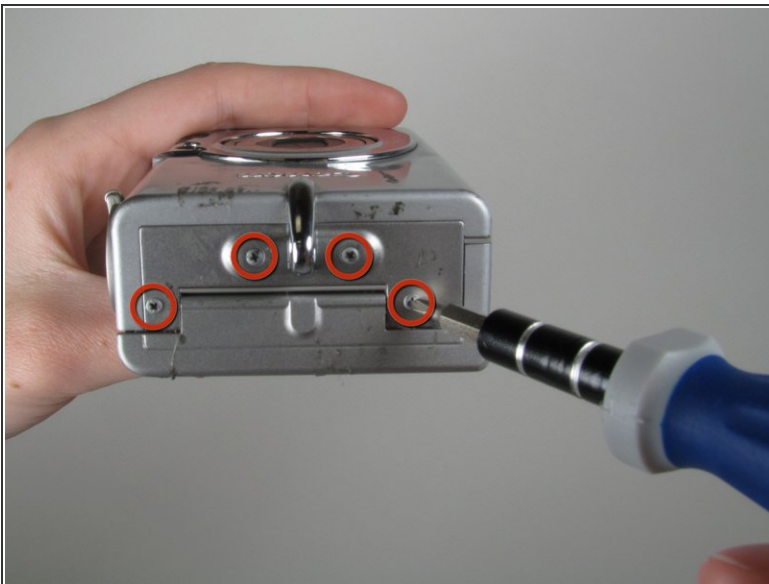


### Step 3



- Remove the rear cover from the rest of the camera.
- ⓘ This may require gentle rocking of the case to free it.

### Step 4



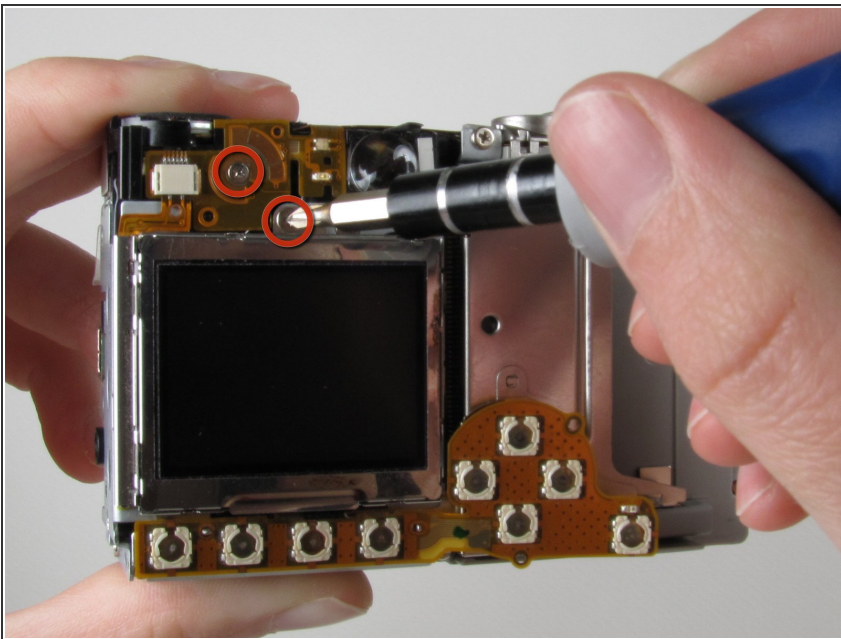
- Unscrew the four Phillips screws from the side of the casing and one screw from the bottom using a #0 Phillips screwdriver.

## Step 5



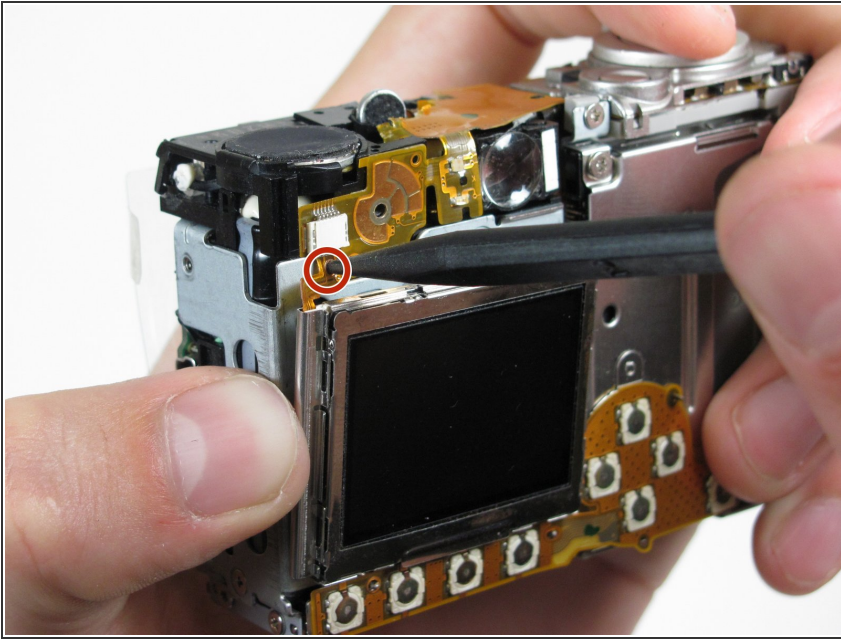
- Free the front cover from the rest of the camera.
- ⓘ The cover may require gentle rocking to remove.

## Step 6 — LCD



- Unscrew two Phillips screws above the LCD using a #0 Phillips screwdriver.

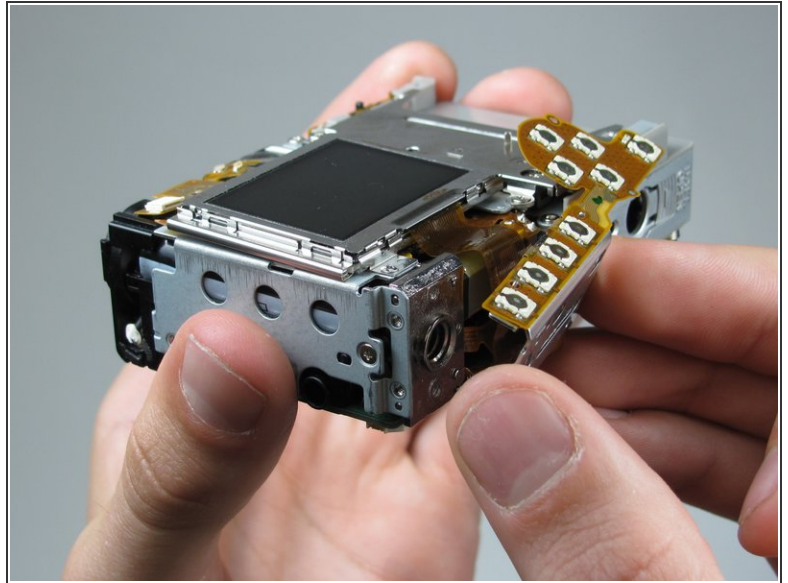
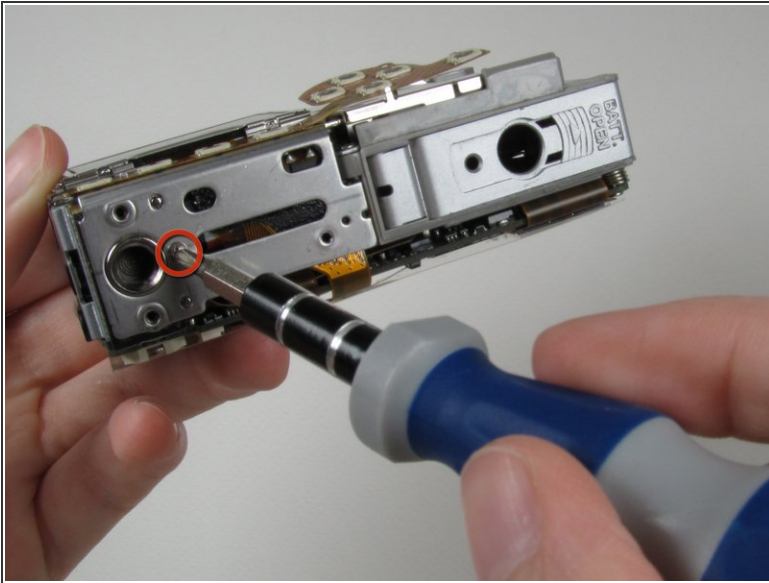
## Step 7



- Gently separate the top of LCD from the rest of the camera using your thumb.
- ⚠ Be careful not pull the LCD too far because of the ribbon cable connection.
- Place the Spudger in the hole of the electrical ribbon.
- Gently pull the ribbon down using the Spudger until it is free from the camera but still connected to the LCD.
- ⓘ The LCD will still be connected to the rest of the camera



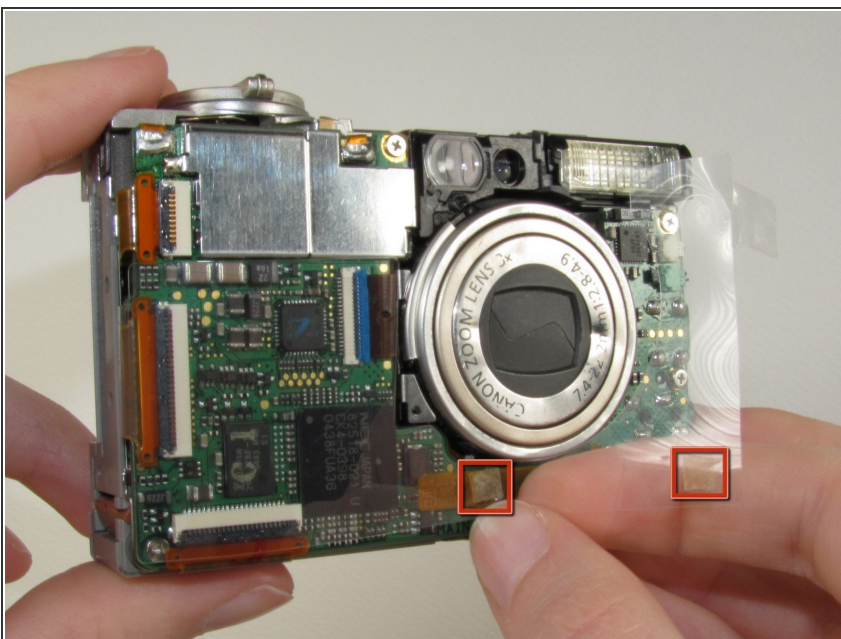
## Step 8



- Unscrew single Phillips screw with a #0 Phillips screwdriver.
- Free the bottom panel and attached ribbon from the rest of the camera.

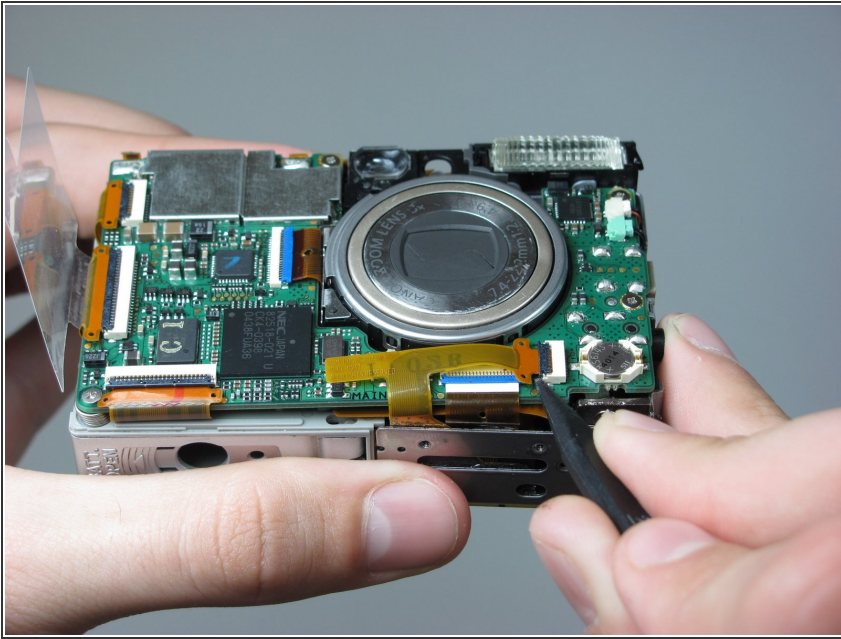
⚠ Be careful not to damage the ribbon.

## Step 9



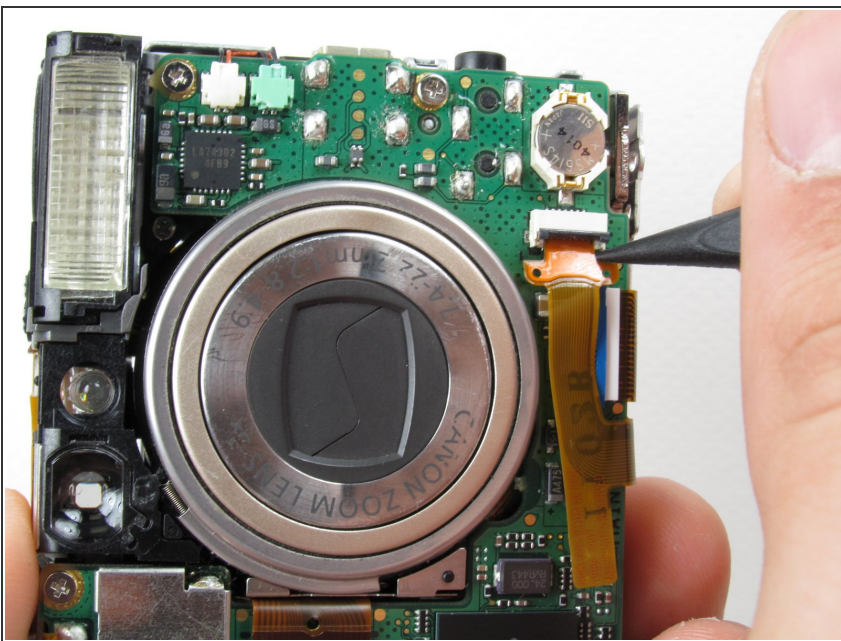
- Turn over the camera.
  - Lift the clear plastic from the face of the camera, peeling the adhesive just below the zoom lens.
- ⓘ The plastic will still be connected on the left side.

## Step 10



- Place the Spudger between the orange ribbon and the black ribbon gate.
- Lift the ribbon gate using the Spudger.

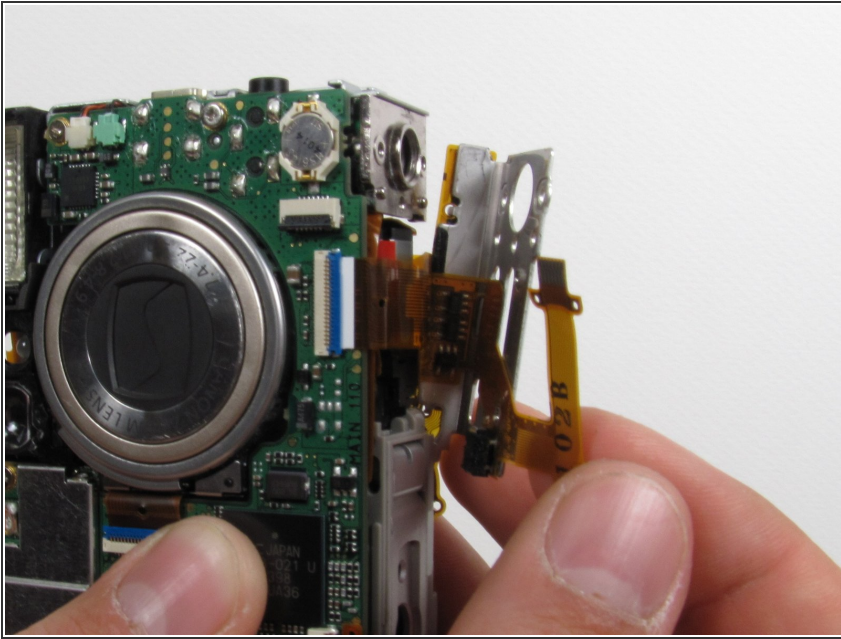
## Step 11



- Place the Spudger in the corner of the ribbon above the hole.
- Remove the ribbon from the ribbon gate by pulling the Spudger away from the gate.

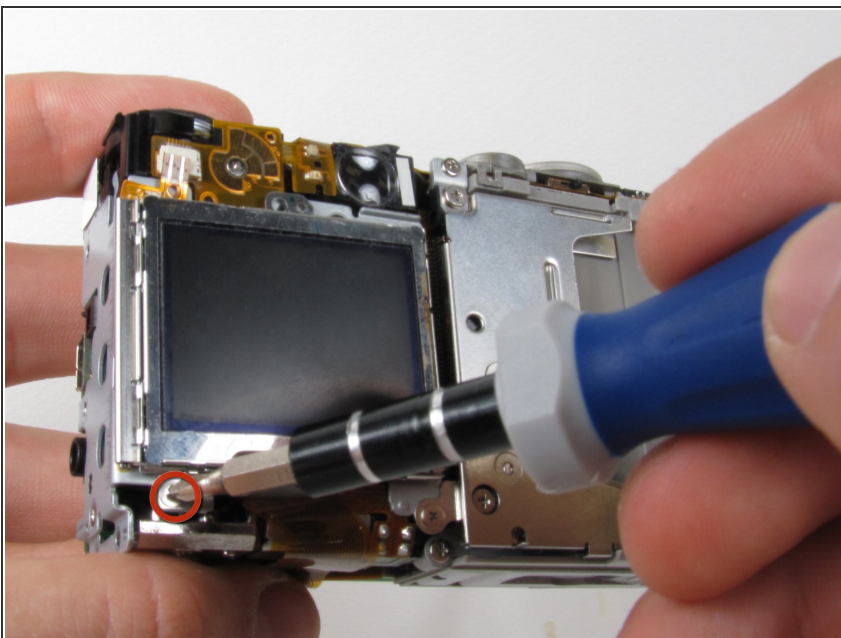


## Step 12



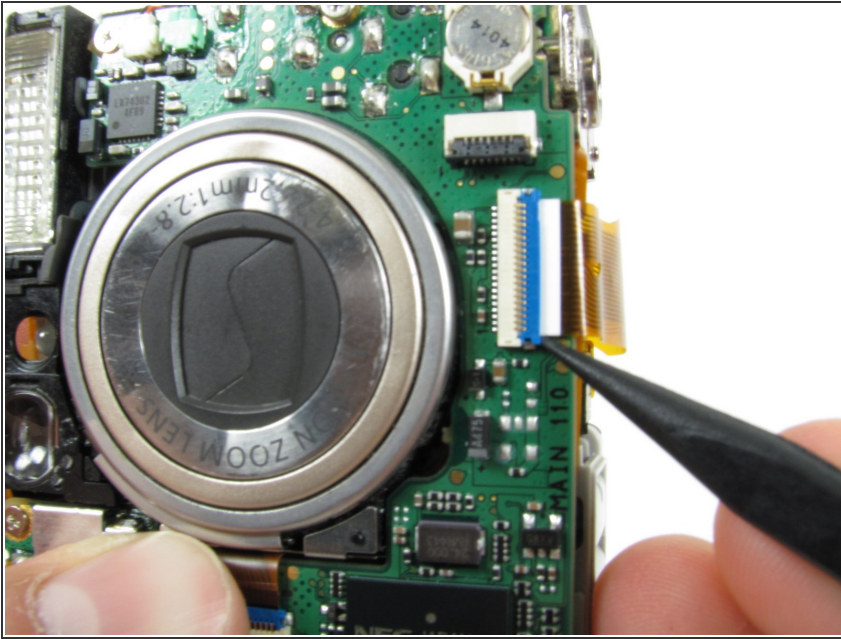
- Free this ribbon and the bottom panel from the rest of the camera.
- ⚠ Be careful not to damage the ribbon.

## Step 13



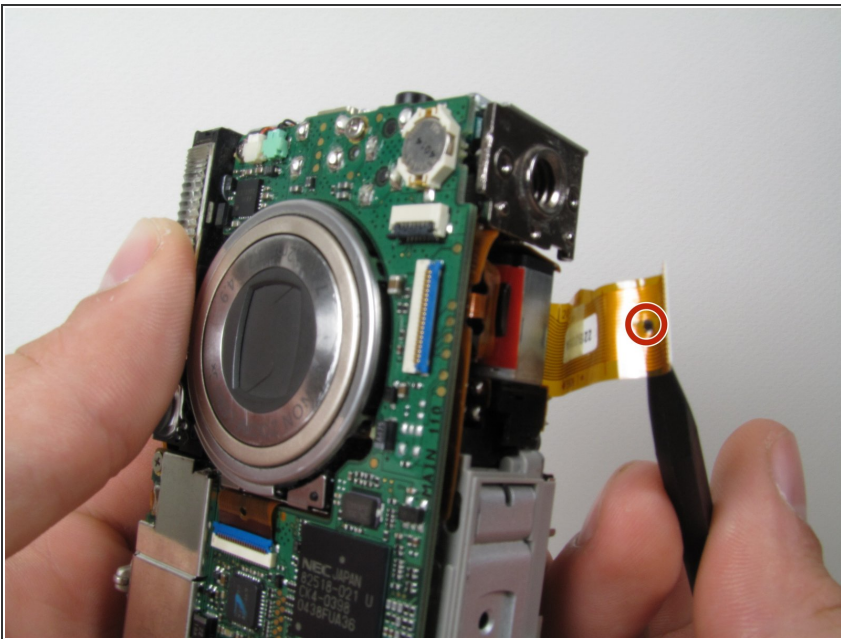
- Turn the camera over so you can see the LCD.
- Remove single Phillips screw below the LCD using a #0 Phillips screwdriver.

## Step 14



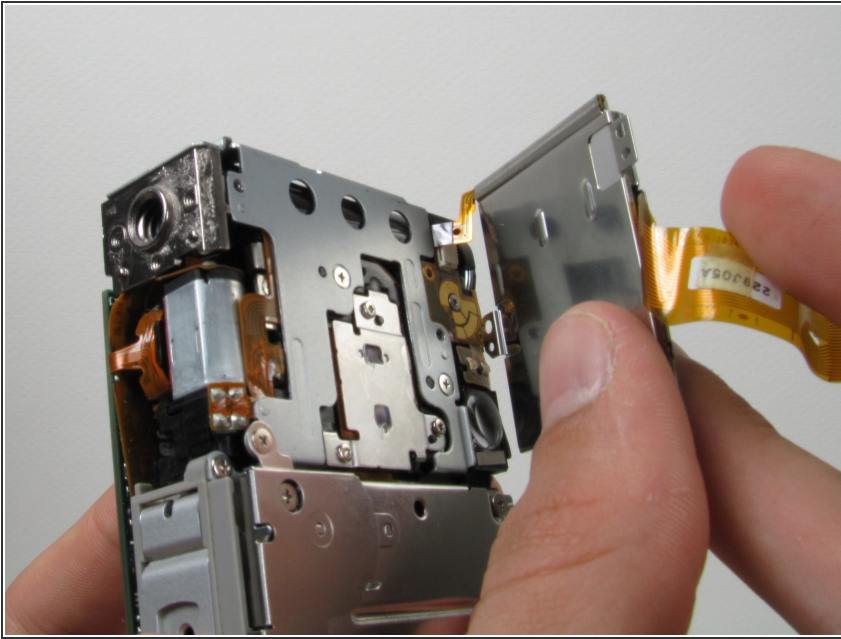
- Lift the blue ribbon gate using the Spudger.

## Step 15



- Insert the Spudger into the hole of the ribbon.
  - Move the Spudger away from the gate to fully remove ribbon.
- ⚠ Be careful not to damage the ribbon.

## Step 16



- Lift the LCD away from the rest of the camera.

To reassemble your device, follow these instructions in reverse order.