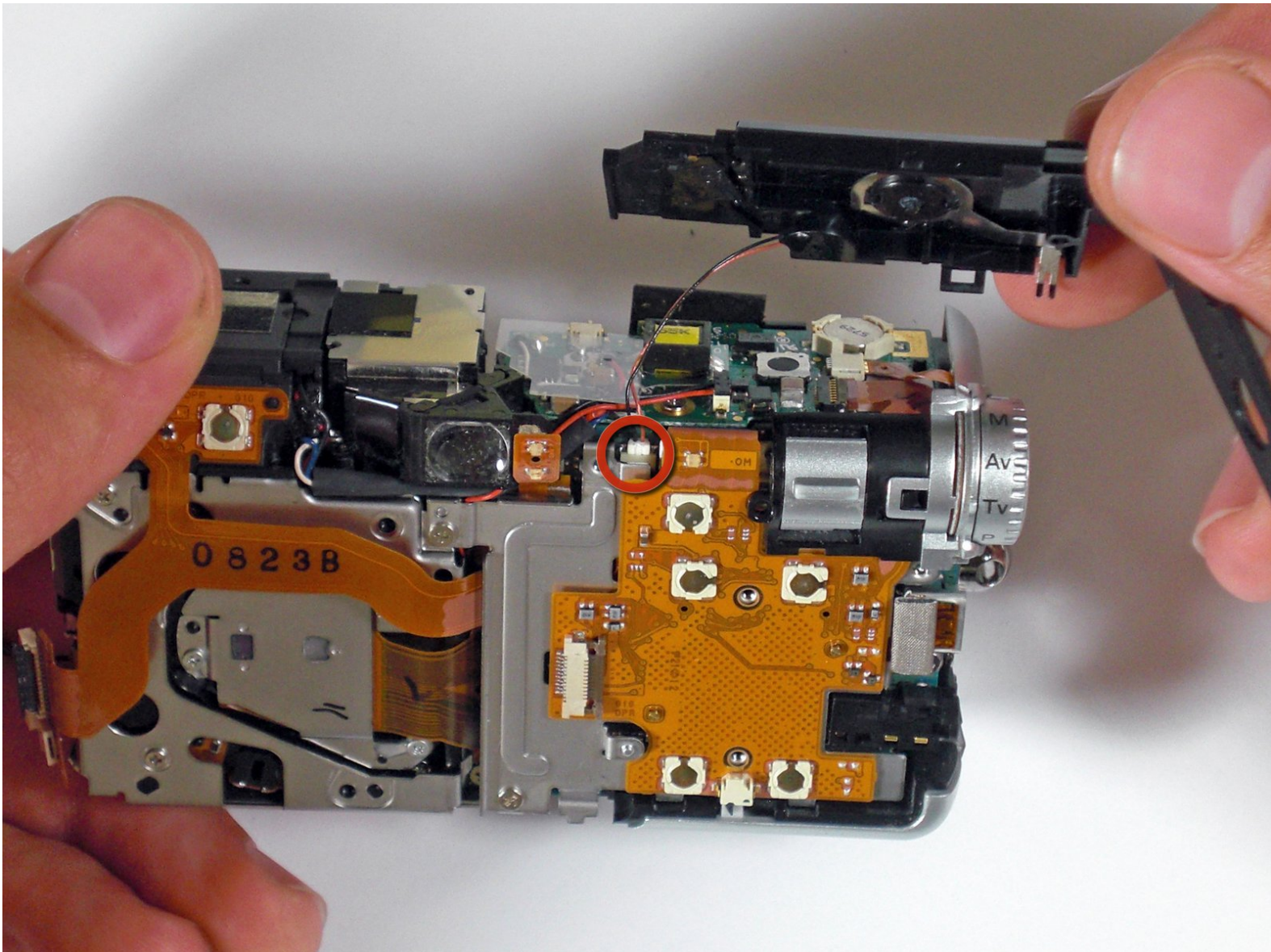




# Canon PowerShot S80 Flash Replacement

Written By: BrettH



---

# INTRODUCTION

This guide serves to replace a faulty flash mechanism.



## TOOLS:

- [Metal Spudger](#) (1)
  - [Phillips #00 Screwdriver](#) (1)
  - [Tweezers](#) (1)
-

## Step 1 — Disassembling Canon PowerShot S80 Outer Casing



- Remove the knot on the wrist lanyard.
- Remove the battery and memory card.

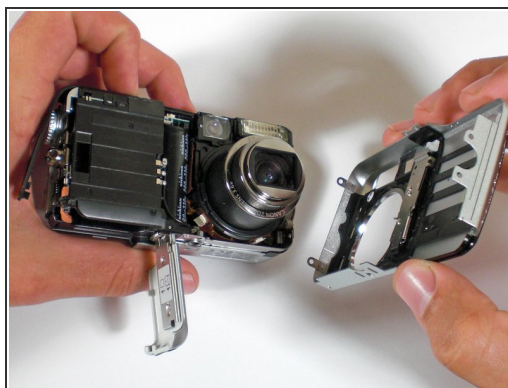


## Step 2



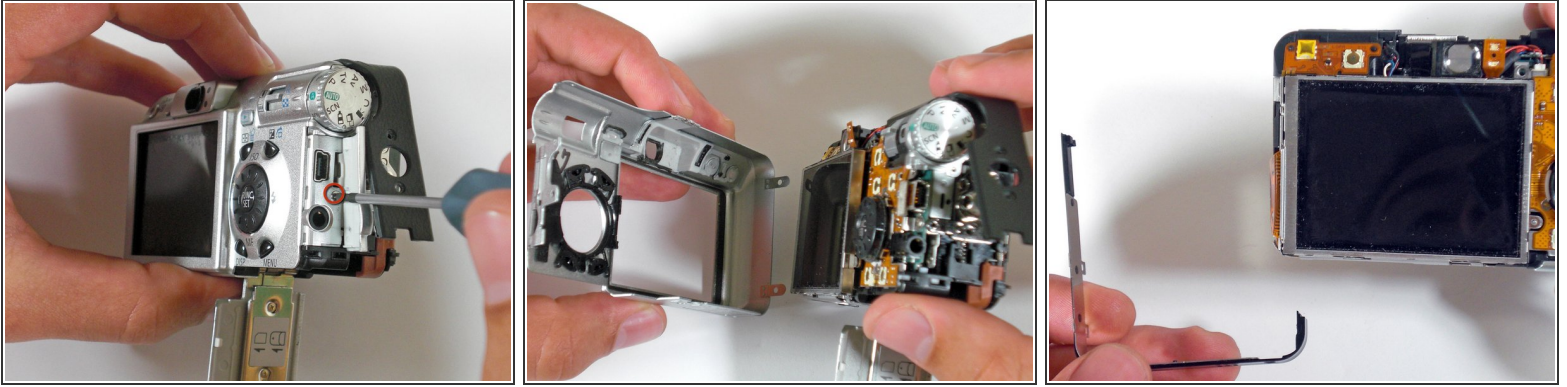
- Remove all screws from sides of outer casing.
- Begin removing the screws on the bottom of the outer casing.
- Remove the rest of the screws from the outer casing.

## Step 3



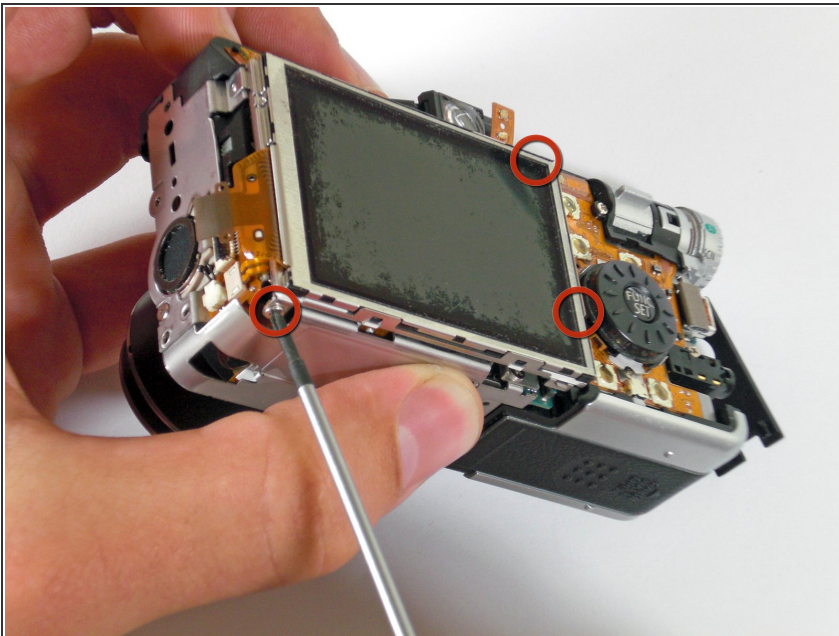
- Gently pull the front cover off the camera.

## Step 4



- Open the "A/V Out Digital" cover slide, and remove the screw inside.
- Gently pull off the back casing.
- Remove the black "L" shaped piece of metal.

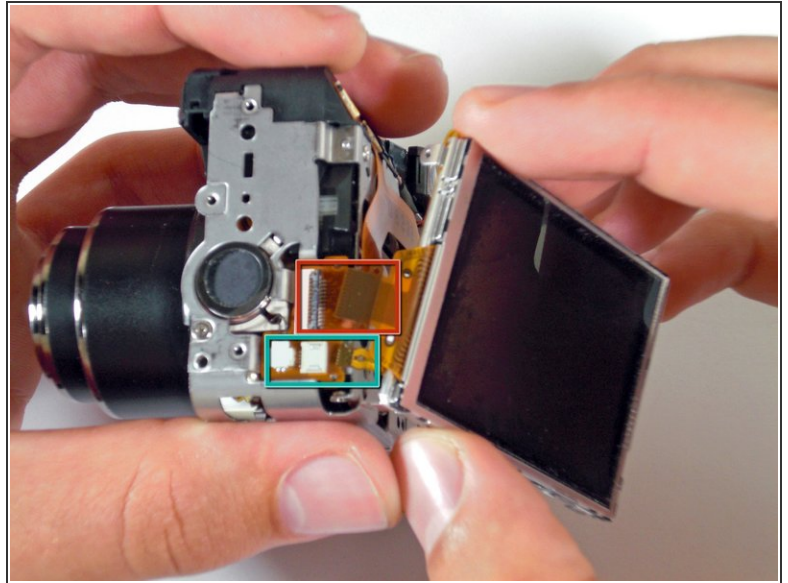
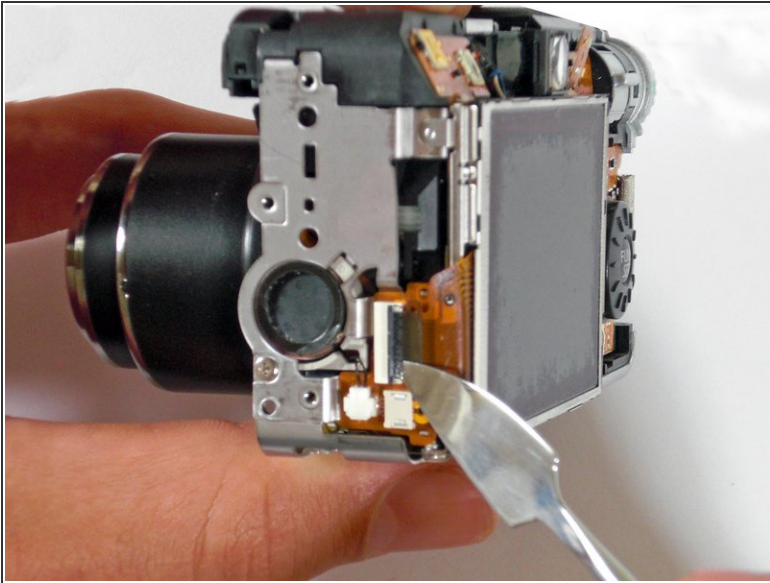
## Step 5 — LCD Screen



- Remove the three screws that are holding the screen in place and free the screen from the underlying components.
- ⚠ Be careful of the ribbon wire that is still attached on the left of the screen.

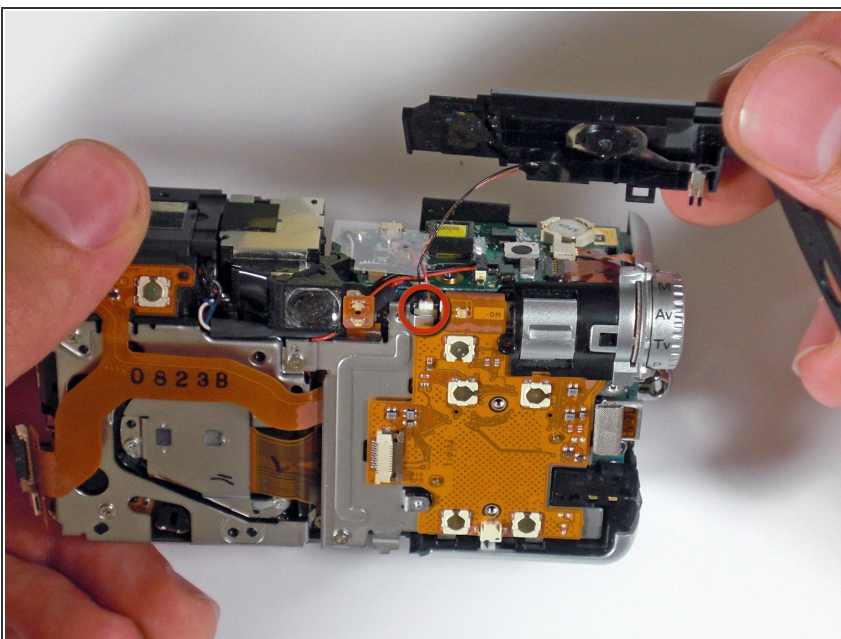


## Step 6



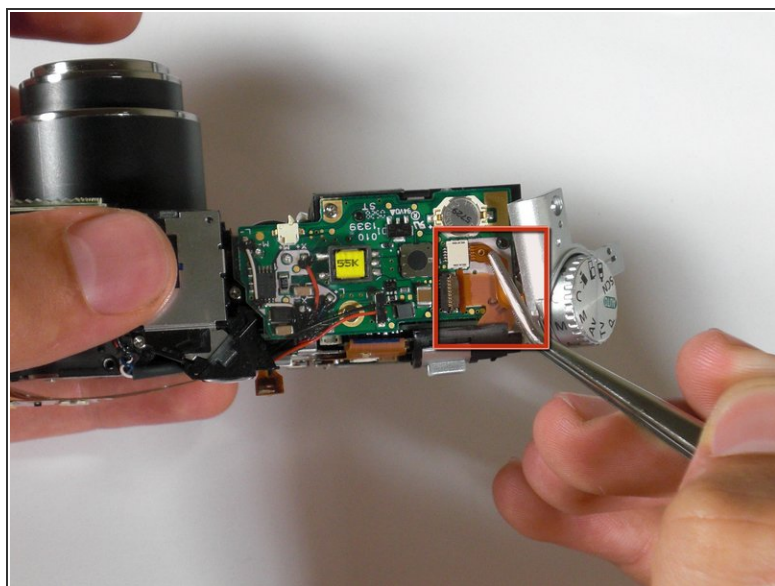
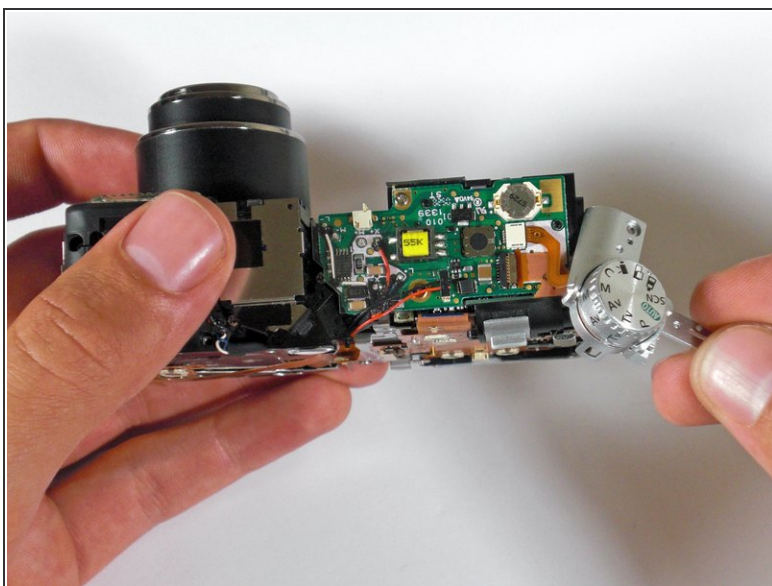
- With the spudger, gently lift the black flap that is holding the wide ribbon cable wire in place.
- Unplug the wide ribbon cable.
- Unplug the narrow ribbon cable to free the LCD screen from the camera body

## Step 7 — Flash



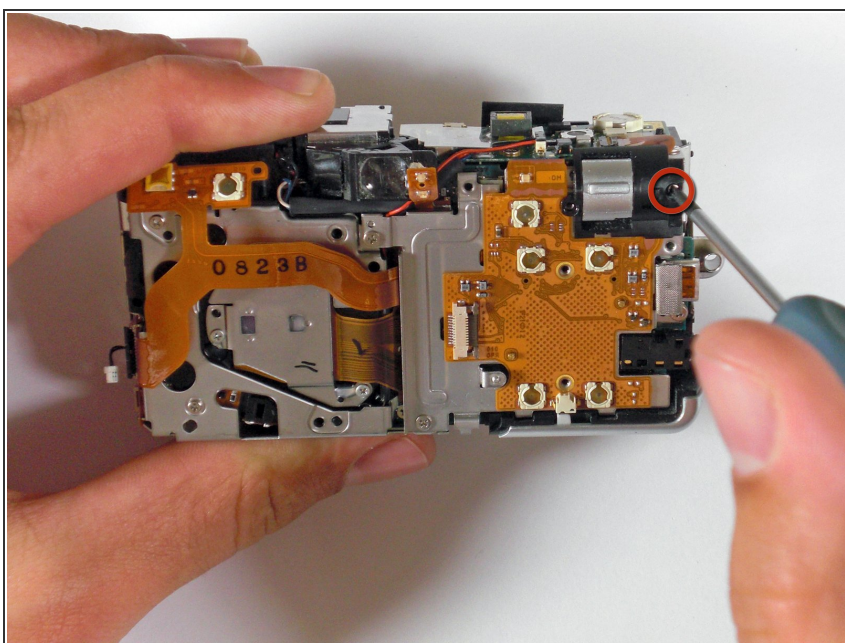
- Remove the L-shaped corner trim containing the picture button.
- Carefully unplug the connection cable attached.

## Step 8



- Pull the selector wheel from the top corner of the camera.
- With a set of tweezers, carefully remove the ribbon cable connection.

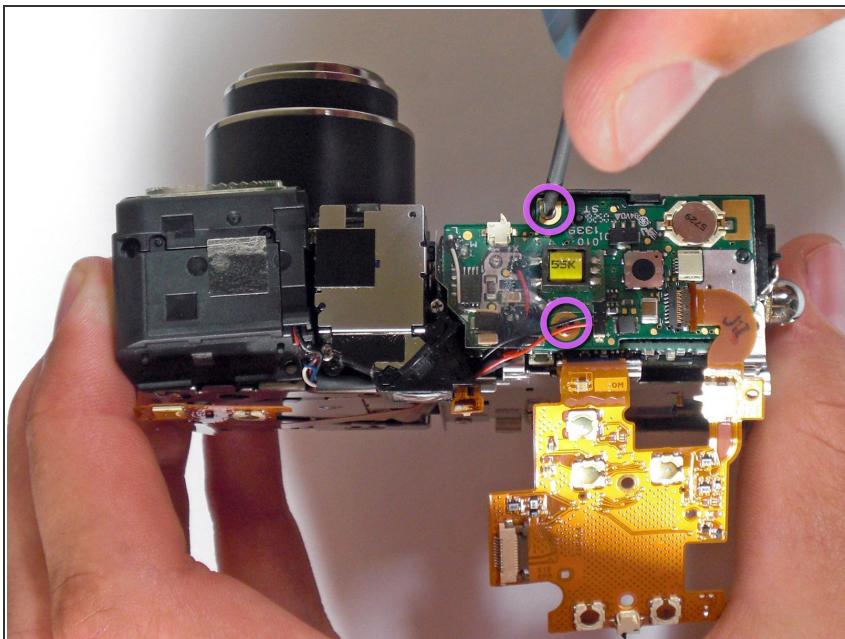
## Step 9



- Unscrew the zoom toggle switch and remove.

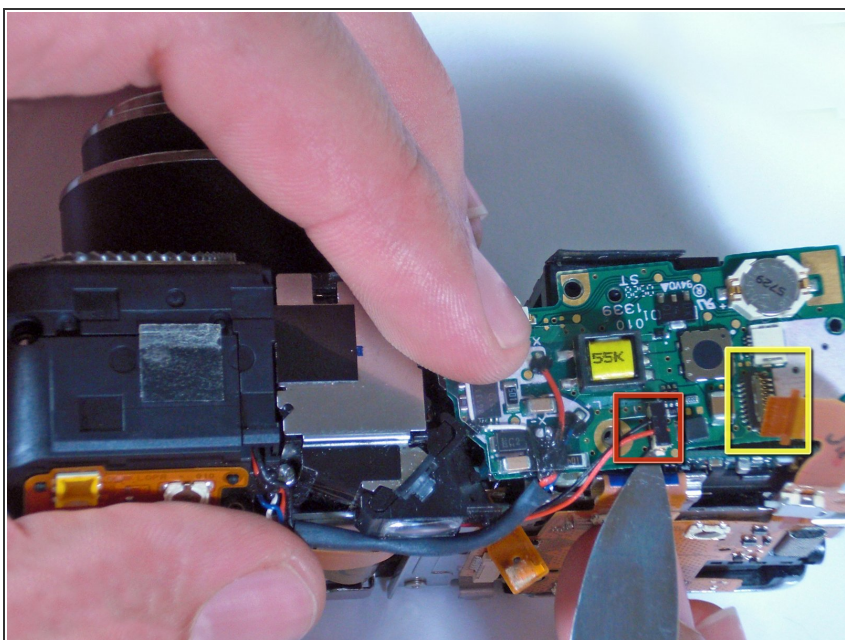


## Step 10



- Unscrew the flash board.

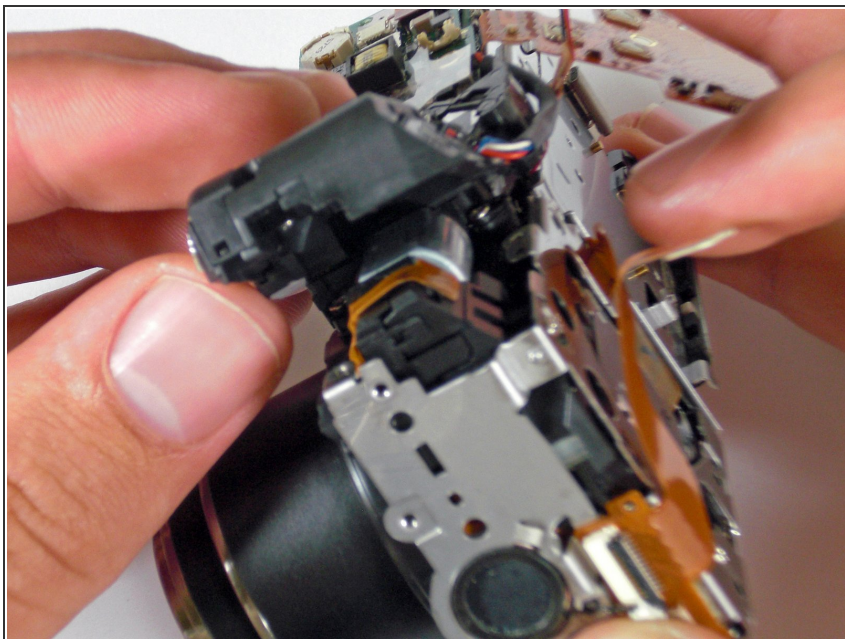
## Step 11



- With a metal spudger, gently pry up and remove the cable connection.
- With a metal spudger, gently lift up black tab to remove ribbon cable.

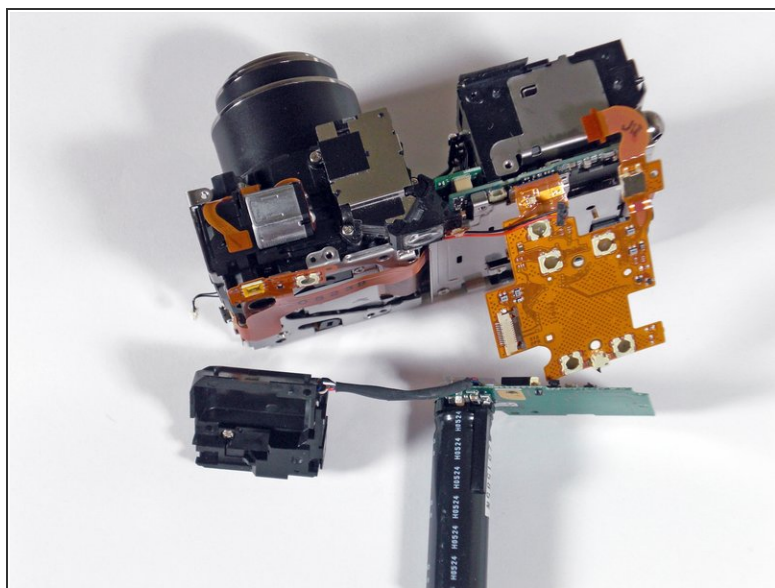
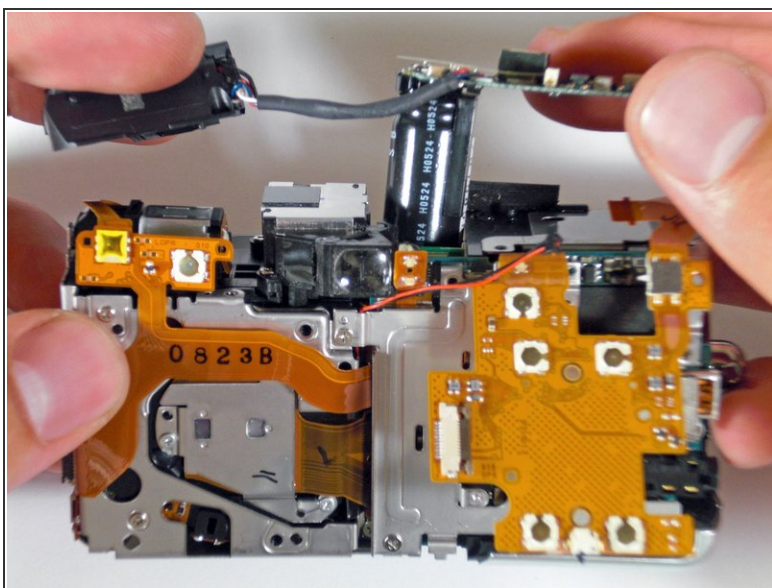


## Step 12



- Lift the flash bulb unit from the camera.

## Step 13



- Lift the entire three-part flash assembly from the camera.

To reassemble your device, follow these instructions in reverse order.