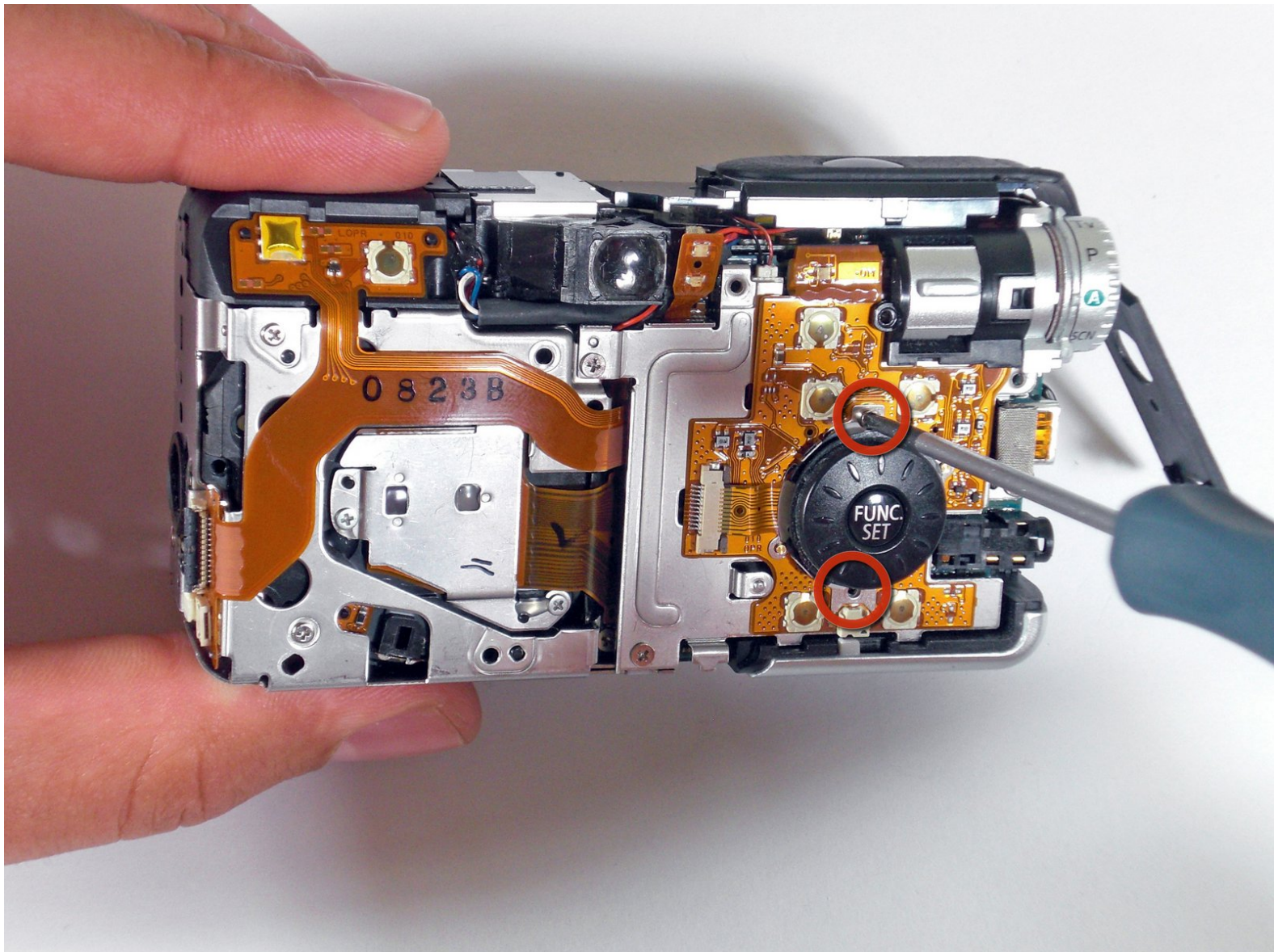




# Canon PowerShot S80 Motherboard Replacement

Replace the Motherboard in your Canon PowerShot S80.

Written By: BrettH



---

# INTRODUCTION

This guide serves to remove and replace the motherboard.



## TOOLS:

- [Metal Spudger](#) (1)
  - [Phillips #00 Screwdriver](#) (1)
-

## Step 1 — Disassembling Canon PowerShot S80 Outer Casing



- Remove the knot on the wrist lanyard.
- Remove the battery and memory card.

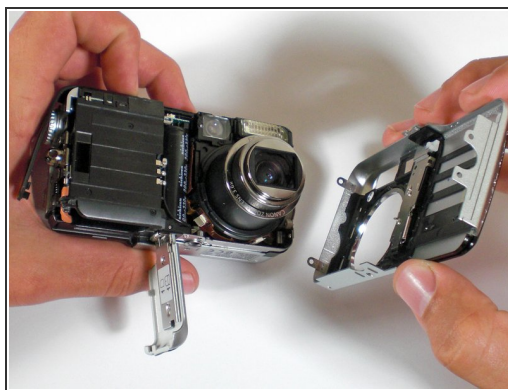


## Step 2



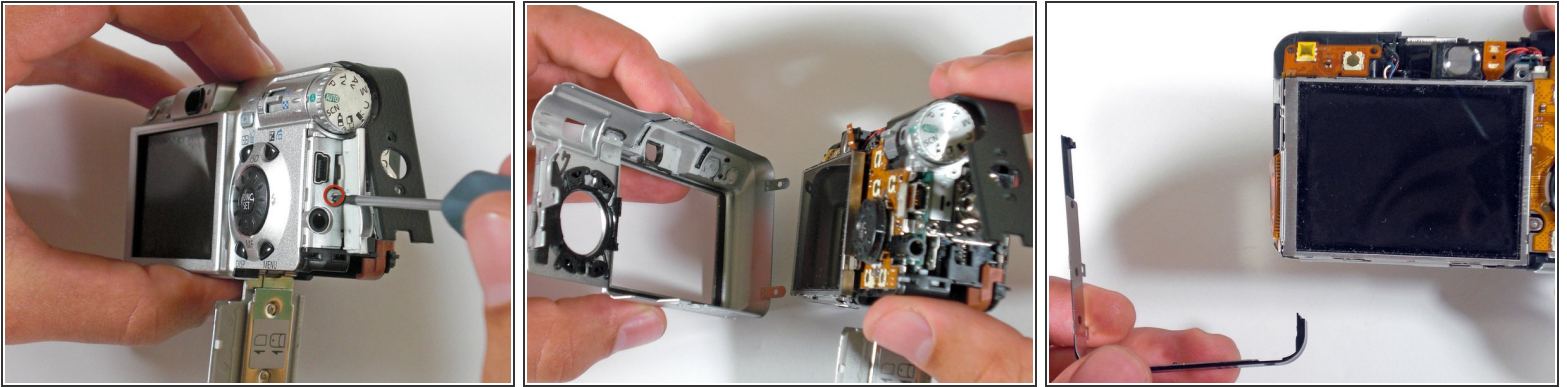
- Remove all screws from sides of outer casing.
- Begin removing the screws on the bottom of the outer casing.
- Remove the rest of the screws from the outer casing.

## Step 3



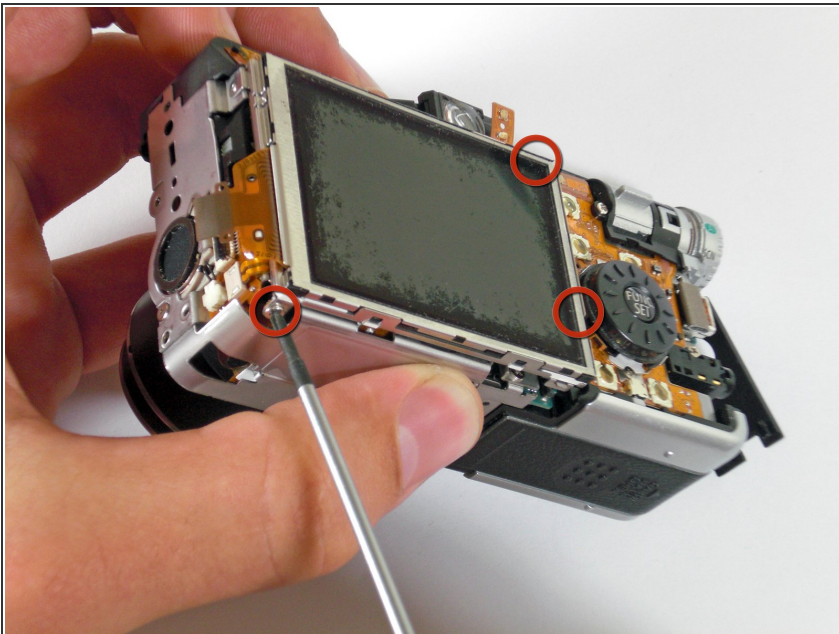
- Gently pull the front cover off the camera.

## Step 4



- Open the "A/V Out Digital" cover slide, and remove the screw inside.
- Gently pull off the back casing.
- Remove the black "L" shaped piece of metal.

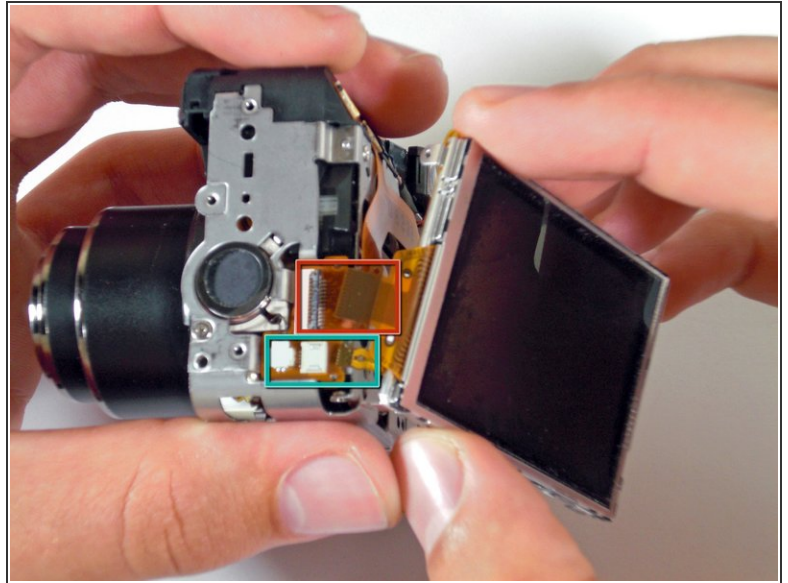
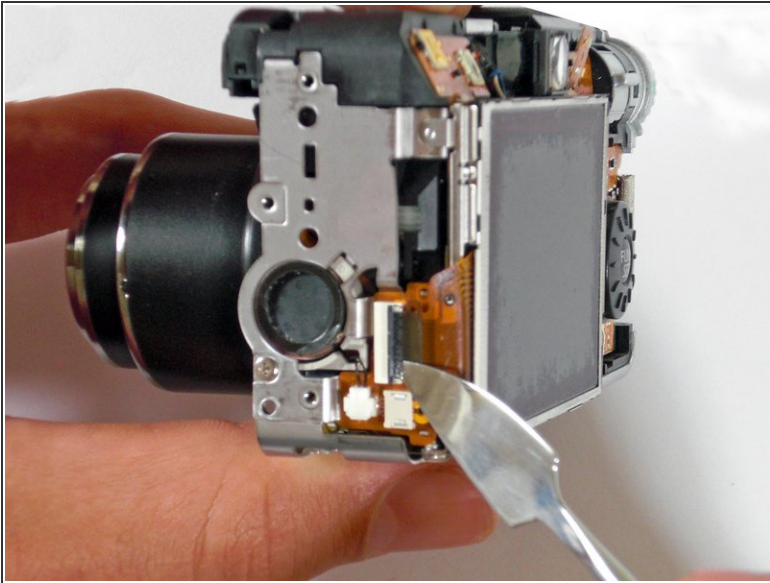
## Step 5 — LCD Screen



- Remove the three screws that are holding the screen in place and free the screen from the underlying components.
- ⚠ Be careful of the ribbon wire that is still attached on the left of the screen.

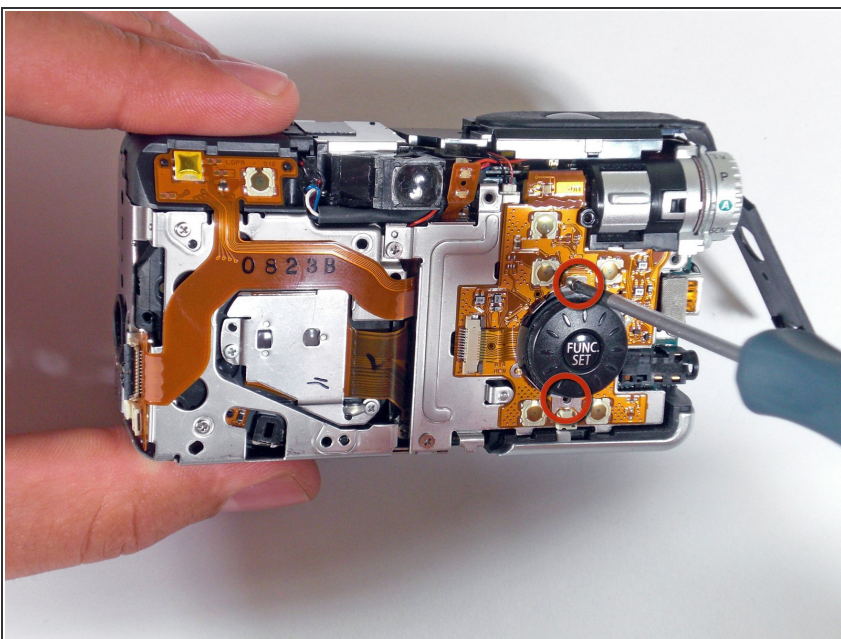


## Step 6



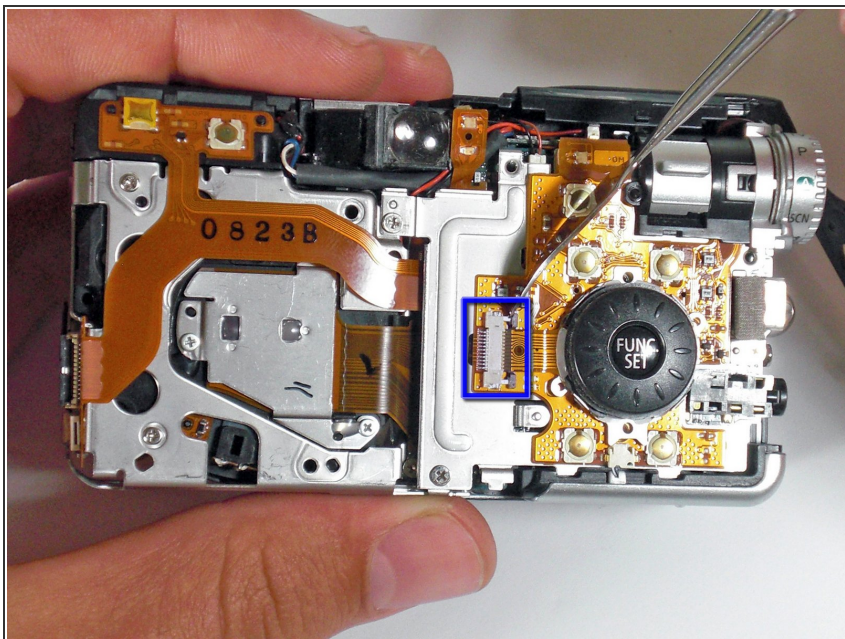
- With the spudger, gently lift the black flap that is holding the wide ribbon cable wire in place.
- Unplug the wide ribbon cable.
- Unplug the narrow ribbon cable to free the LCD screen from the camera body

## Step 7 — Motherboard



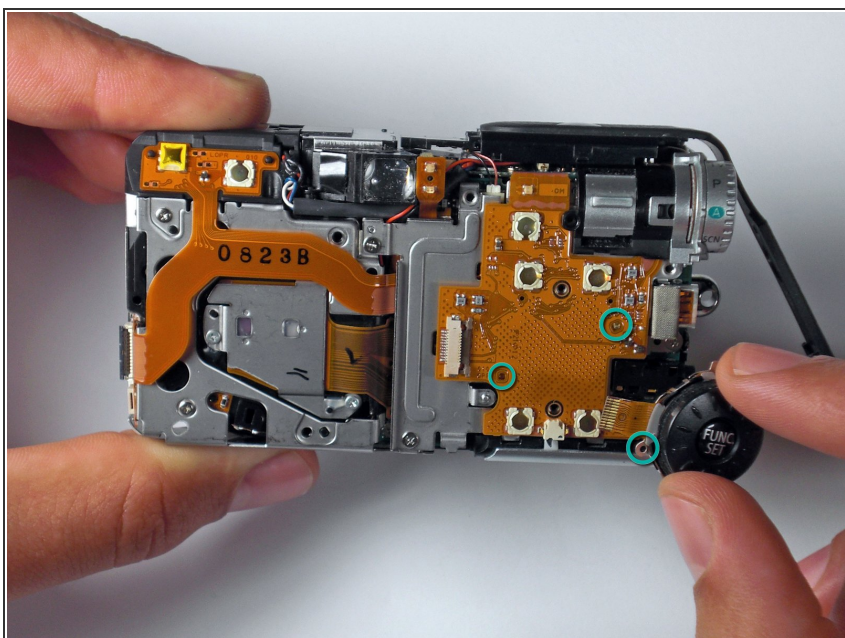
- Remove the screws holding down function set button.

## Step 8



- Gently pry up the tab with a metal spudger and remove the ribbon cable.

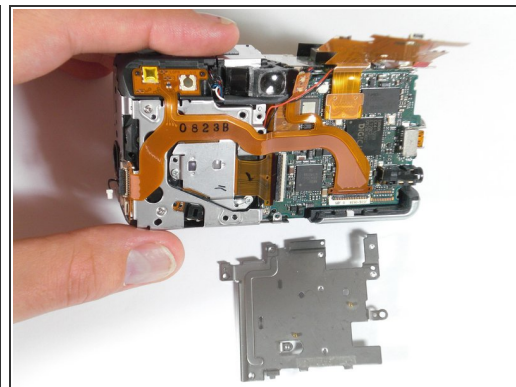
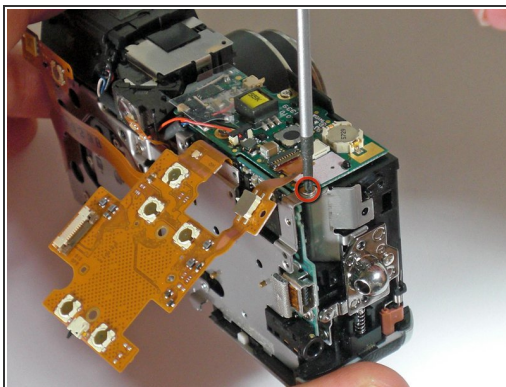
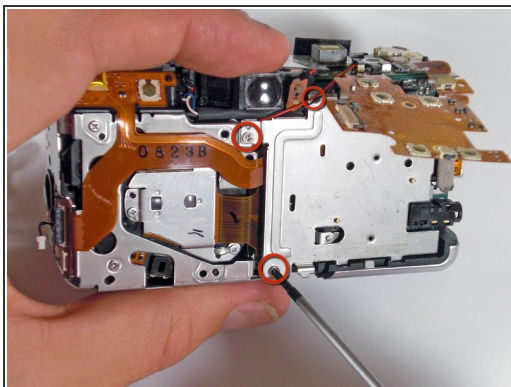
## Step 9



- Be mindful of the pins as you lift up and remove the function/set button.

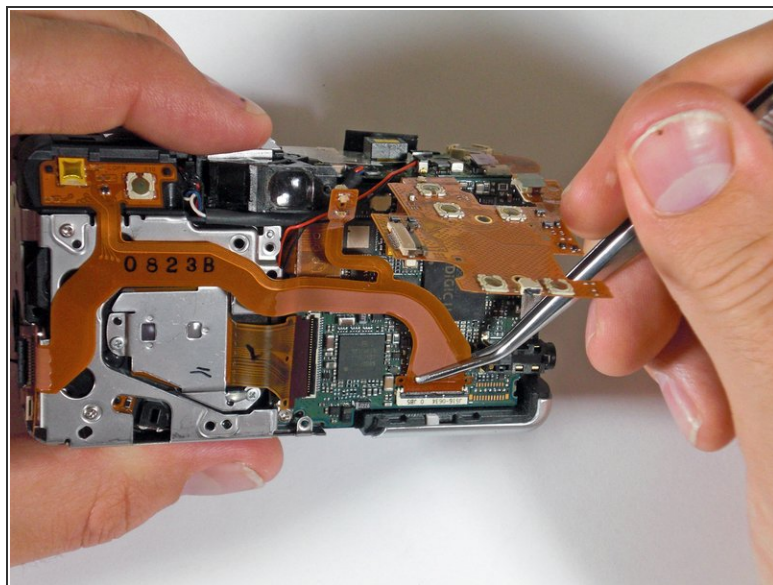
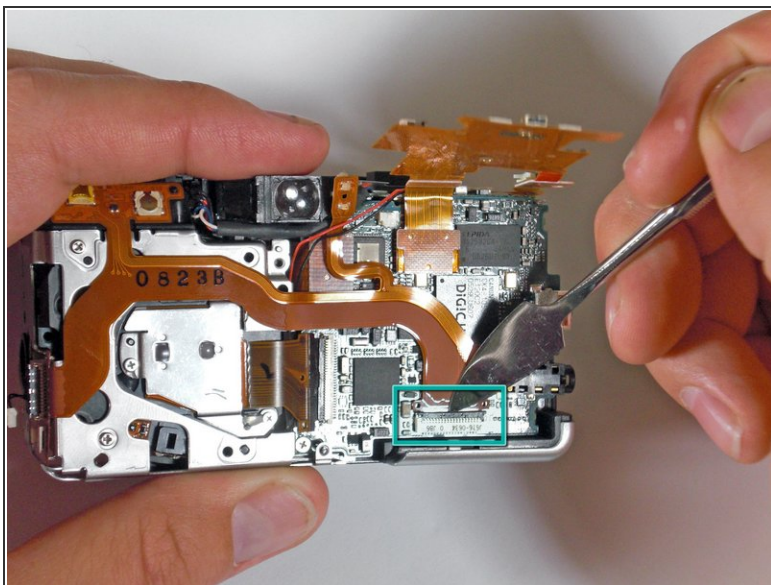


## Step 10



- Remove the screws from the metal plate.
- Gently remove the metal plate.

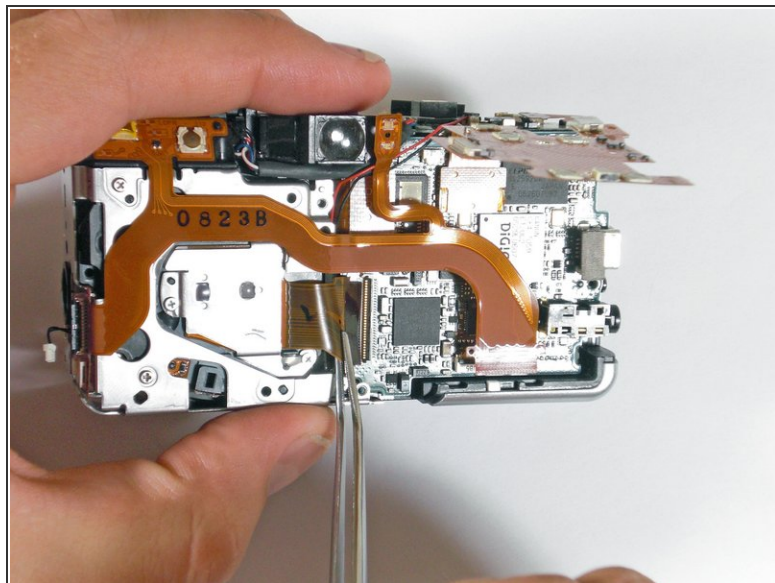
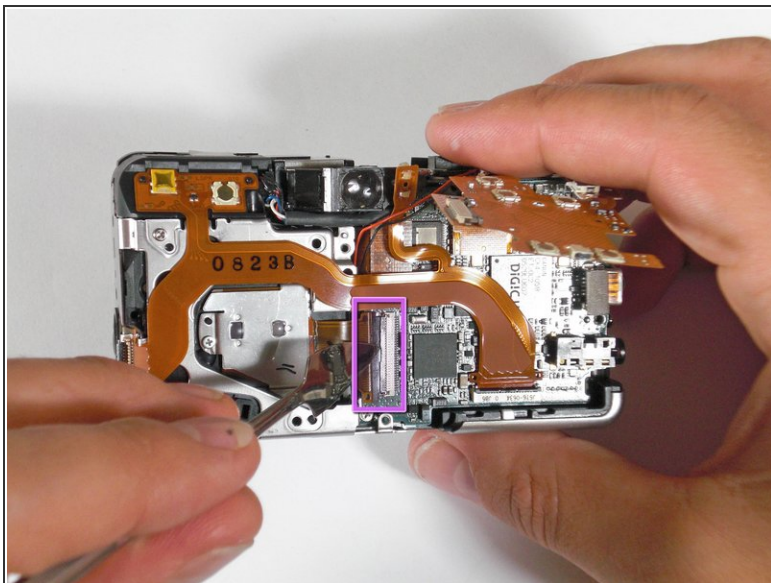
## Step 11



- Lift the tab connecting the ribbon cable and detach.

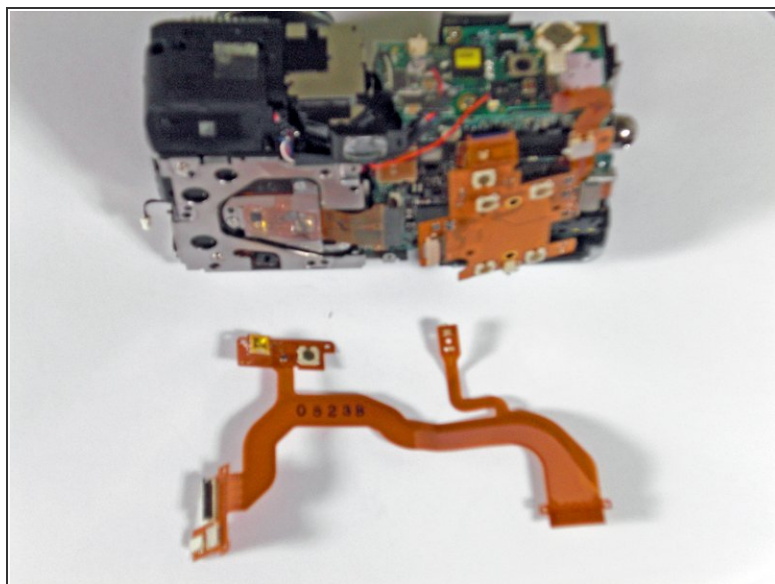
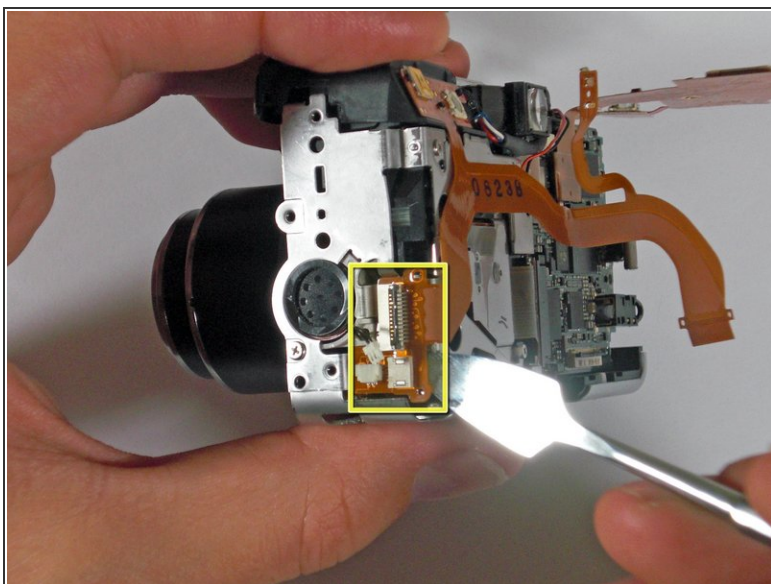


## Step 12



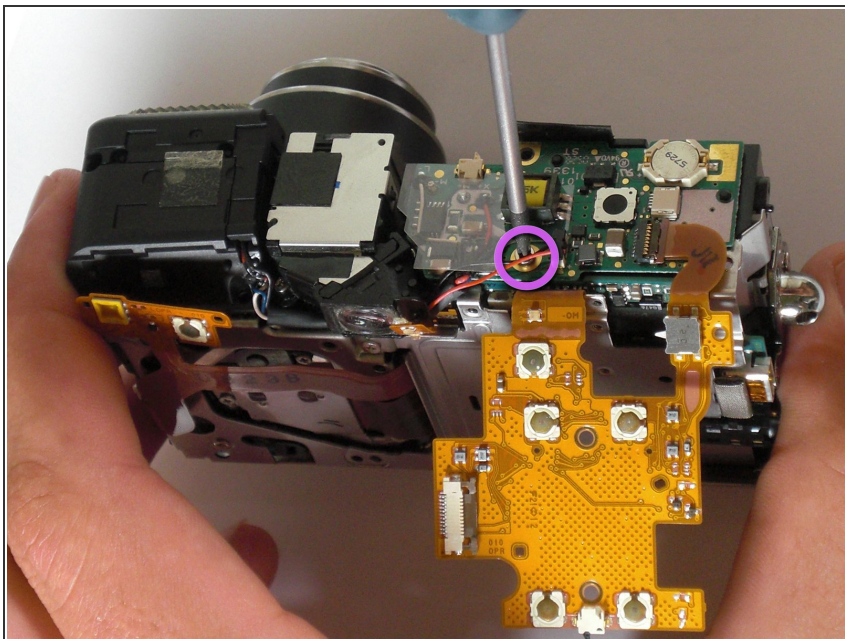
- Use a spudger to lift up the ribbon cable tab.
- Detach the ribbon cable.

## Step 13



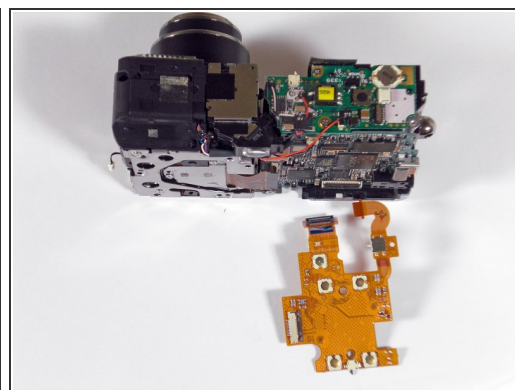
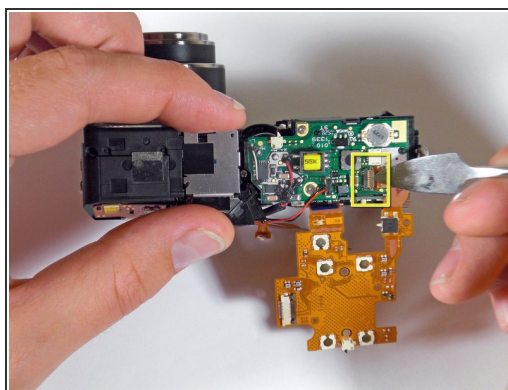
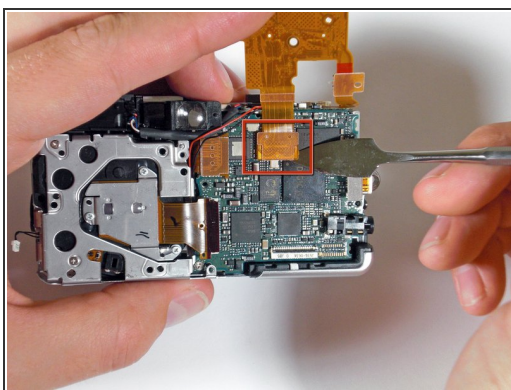
- Gently remove the entire ribbon cable connection to release the ribbon cable from the camera.

## Step 14



- Unscrew the circuit board from the flash unit.

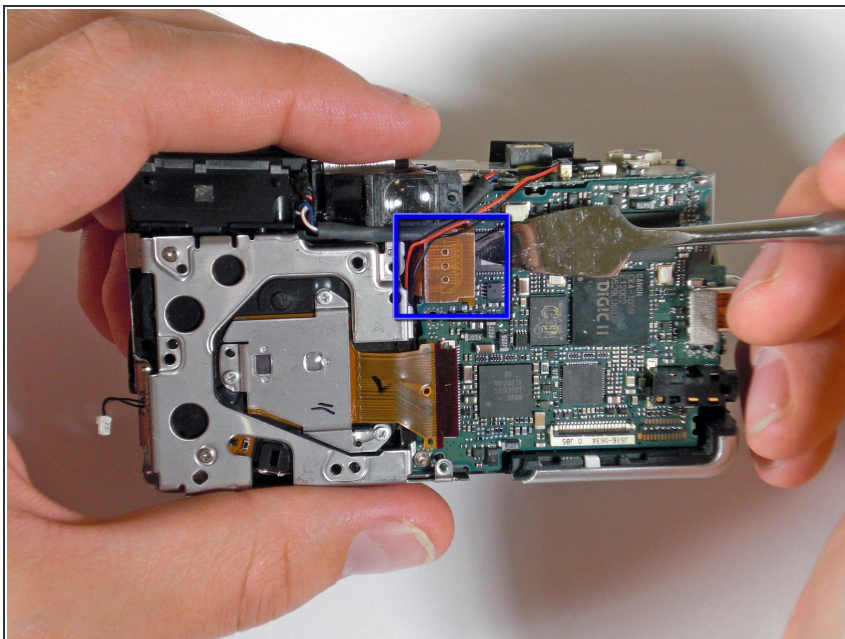
## Step 15



- Pry up the ribbon cable connection and remove it from the camera.
- Lift the ribbon cable tab and completely detach the cable from the camera.

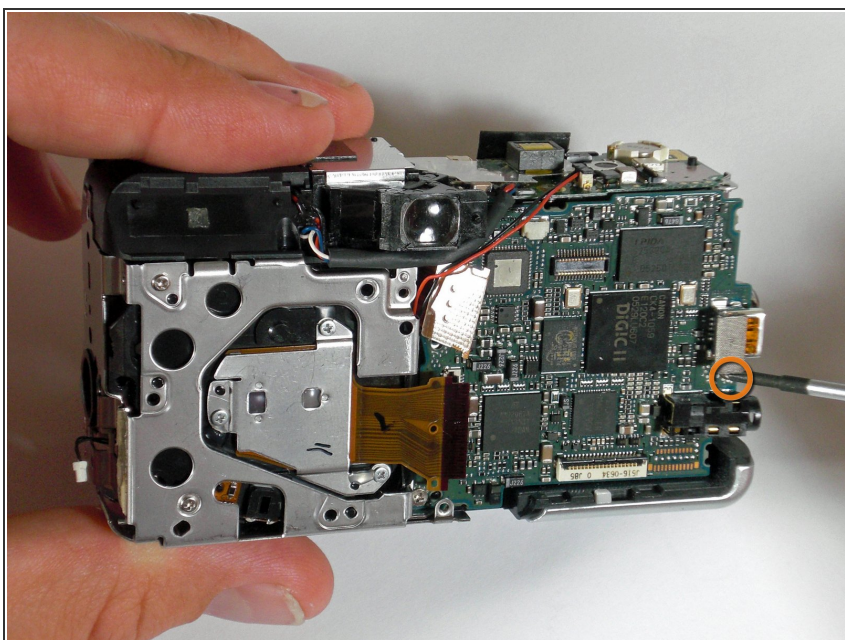


## Step 16



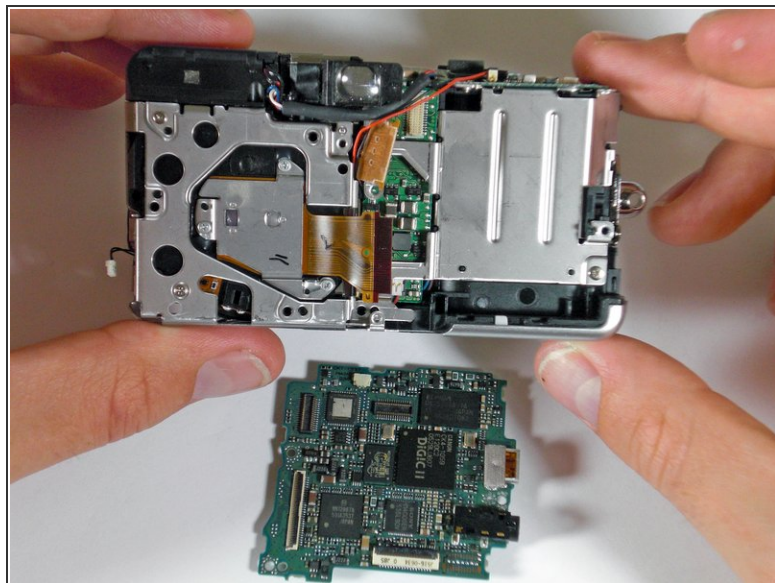
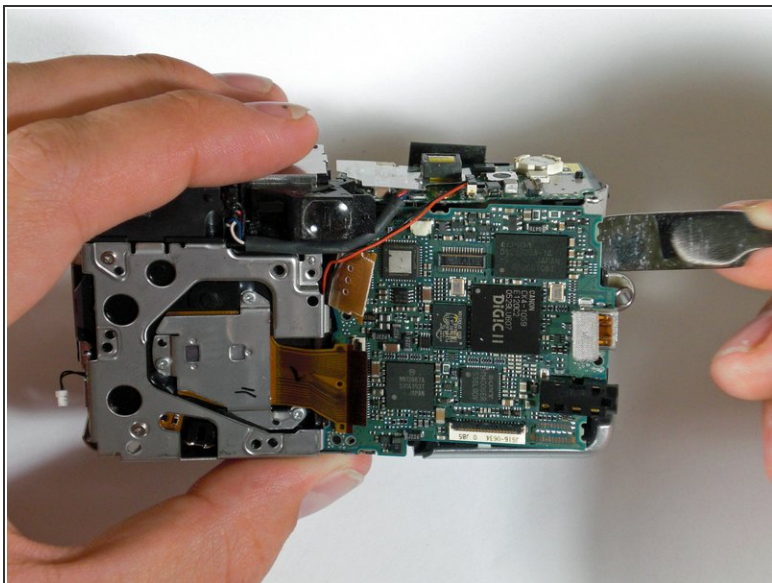
- Pry up the connection, being mindful of the light adhesive.

## Step 17



- Remove the last screw holding the motherboard to the main body.

## Step 18



- Use a spudger to gently lift the motherboard from the camera.

To reassemble your device, follow these instructions in reverse order.