



Canon PowerShot SD1000 Broken Flash Unit Replacement

The flash of the Powershot SD1000 is in need of a new flash unit.

Written By: Phillip Phung

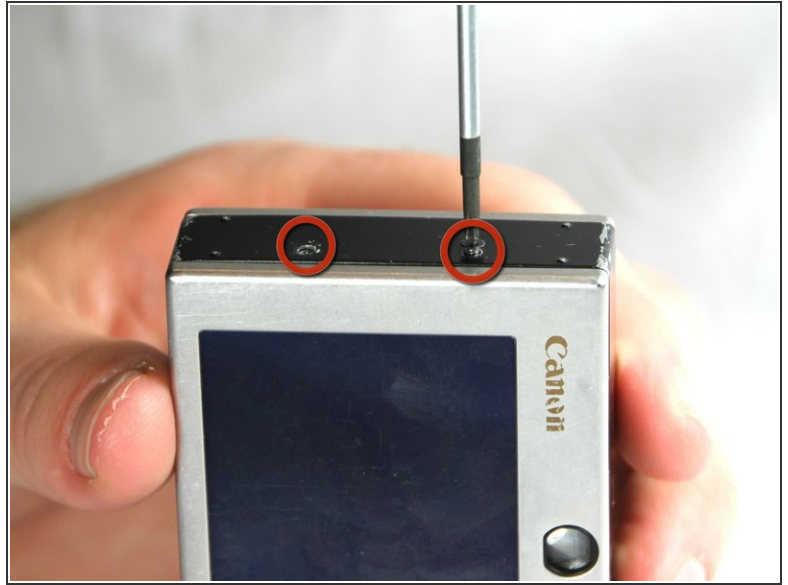




TOOLS:

- [Phillips #00 Screwdriver](#) (1)
 - [Spudger](#) (1)
-

Step 1 — Back Panel



- Remove the two screws from the side panel closest to the camera lens.

ⓘ Note: These screws are 2.9 mm long.

Step 2




- Remove the two screws from the camera bottom panel.

ⓘ Note: These screws are 2.9 mm long.

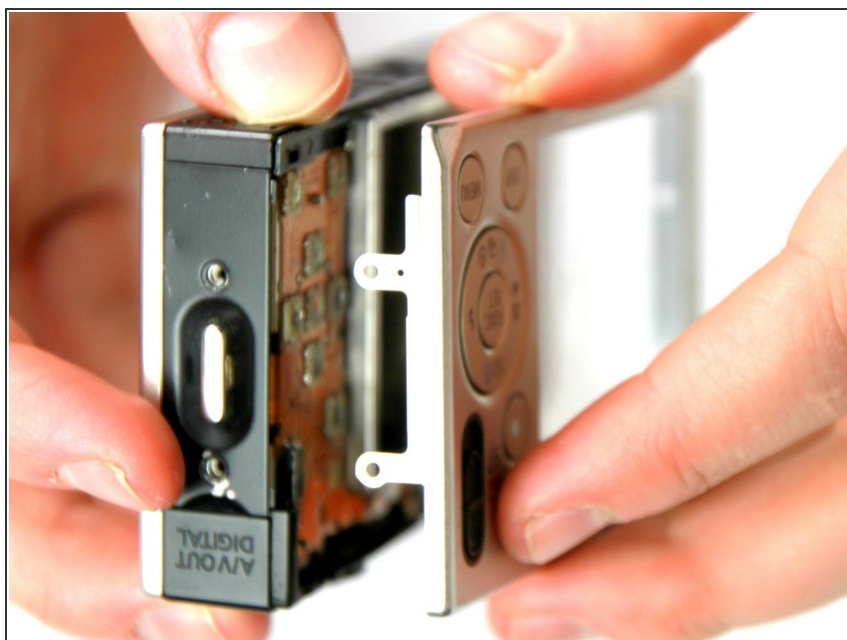
Step 3



- Remove the 2 screws from the side panel farthest from the lens.

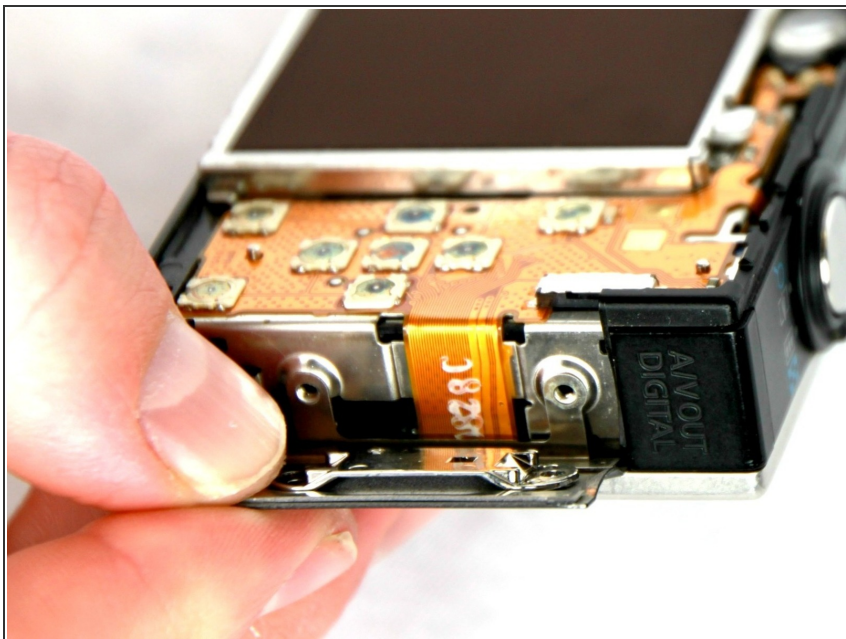
 Note: These screws are 2.9 mm long.

Step 4



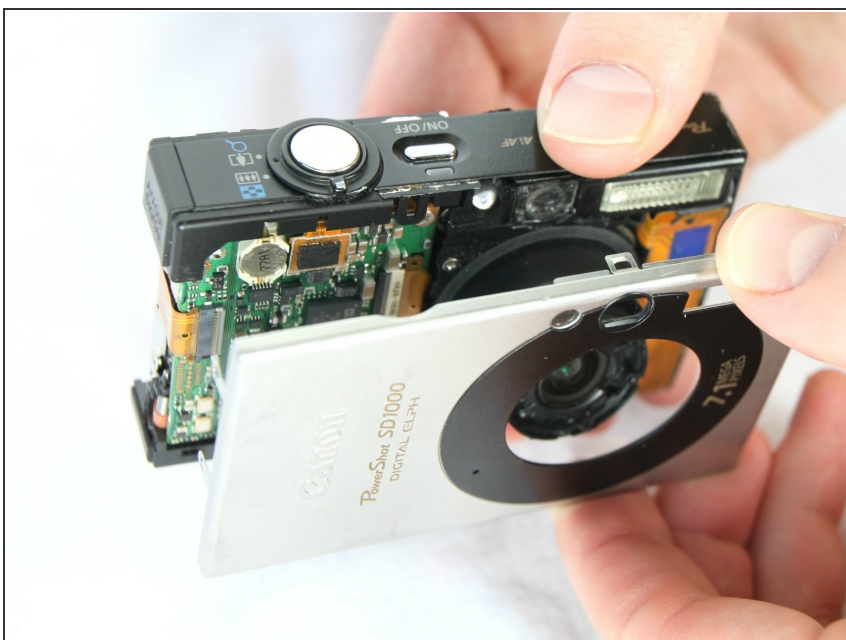
- Pull the back panel away from the camera body, starting at the end with the function buttons.

Step 5



- Remove the small cover panel and attached wrist strap mount.

Step 6 — Front Case of Camera



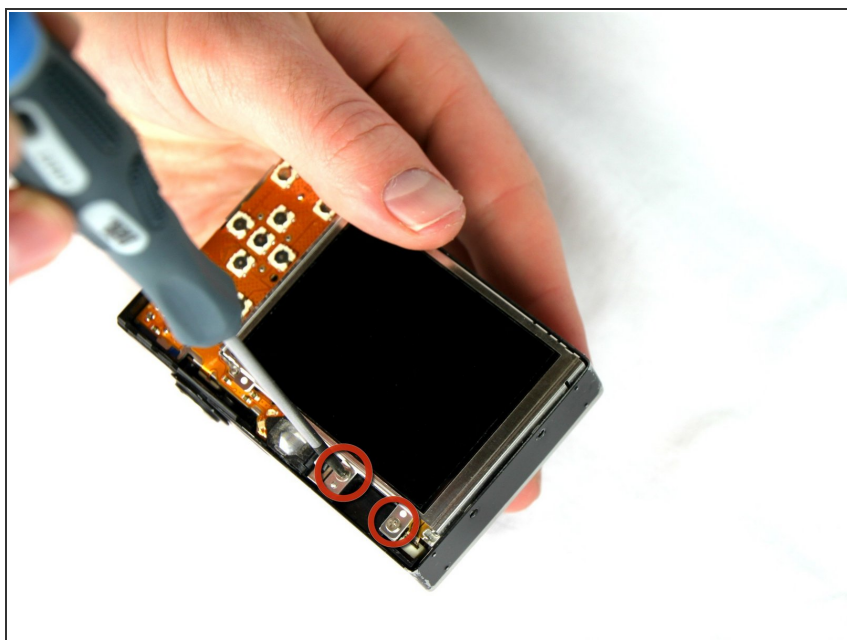
- Remove the front cover by gently pulling it away from the camera body.

Step 7



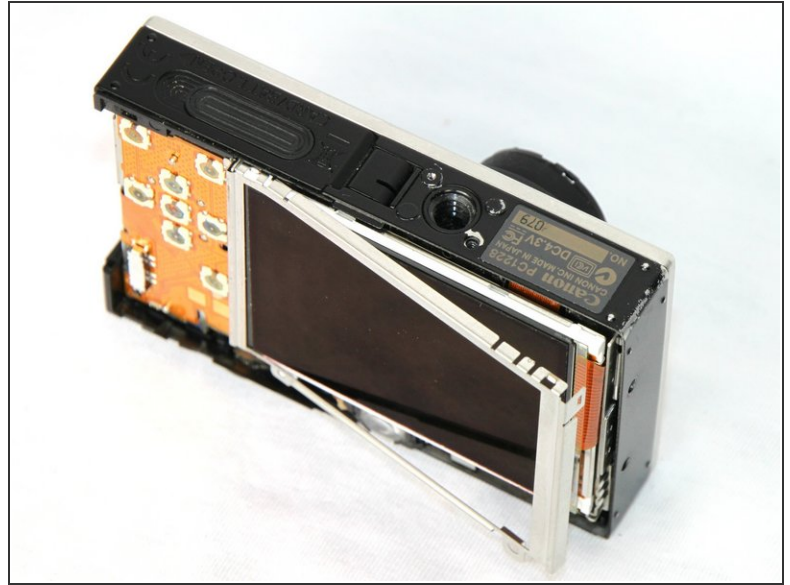
- Place the front cover, back cover, and wrist strap mount in a safe place until you are ready for reassembly.

Step 8 — LCD Screen



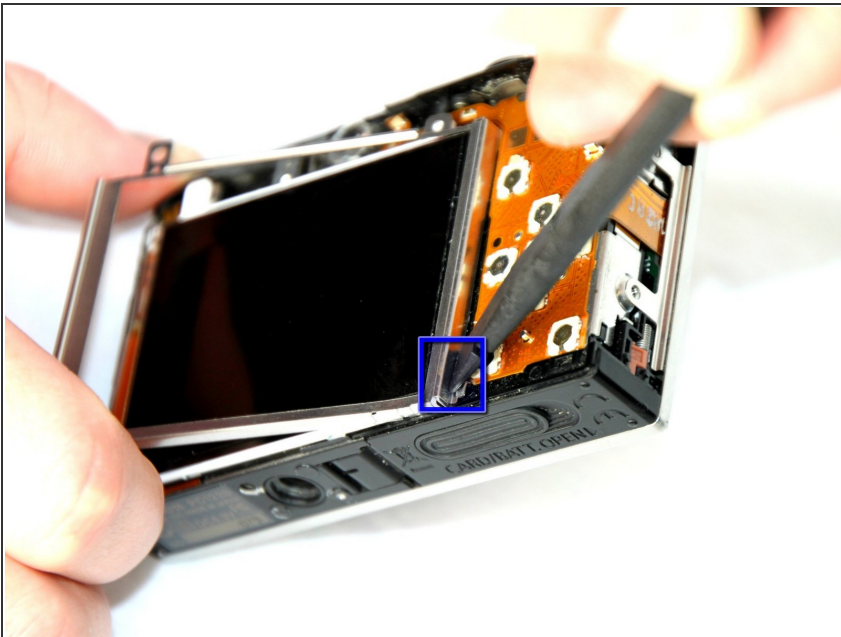
- Remove the 2 screws located at the top of the LCD panel.
- ⓘ Note: These screws are 2.4 mm long.

Step 9



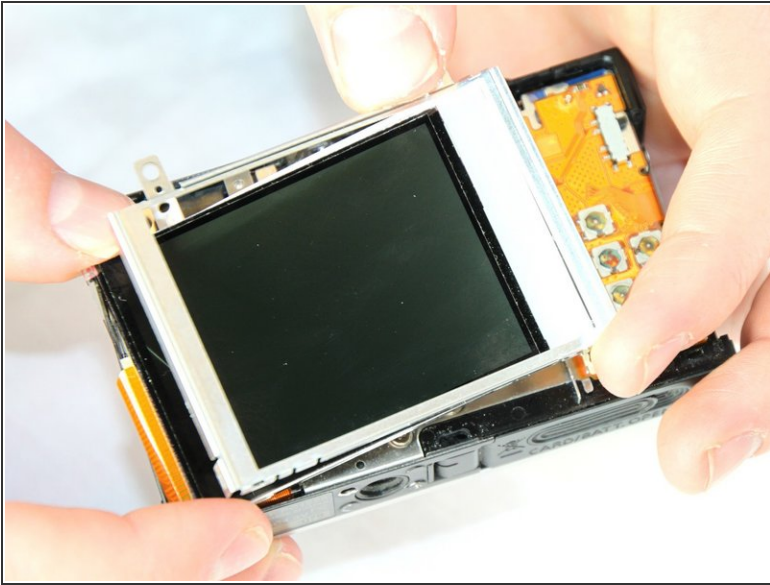
- Pull up the metal frame surrounding LCD screen starting at the side of the camera.

Step 10




- Push the metal frame away from the metal tab using the spudger, to detach the frame.
- Rotate the metal frame upwards.
- ⓘ Note: The metal framing should be attached by a metal tab towards the bottom of the camera, near the function buttons.

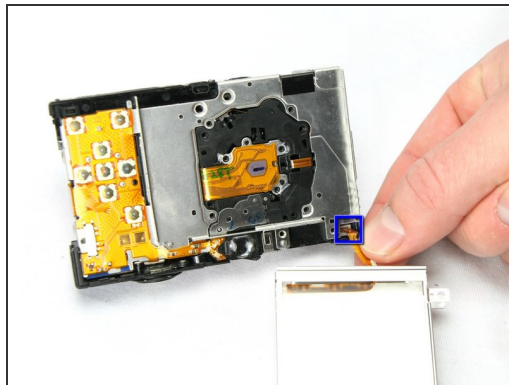
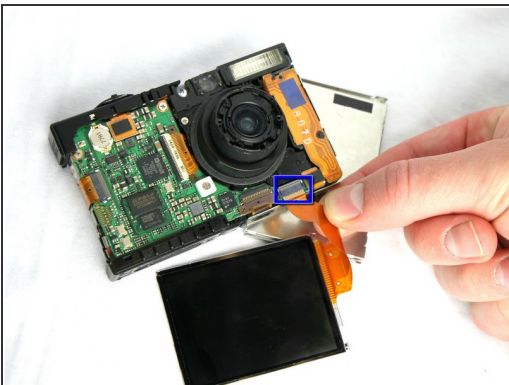
Step 11



- Carefully lift the metal frame from the camera.
- Remove the black LCD screen, leaving the thin lens pieces in place.

 **Note:** BE CAREFUL, both components are attached by an orange connector ribbon and cannot be removed yet!

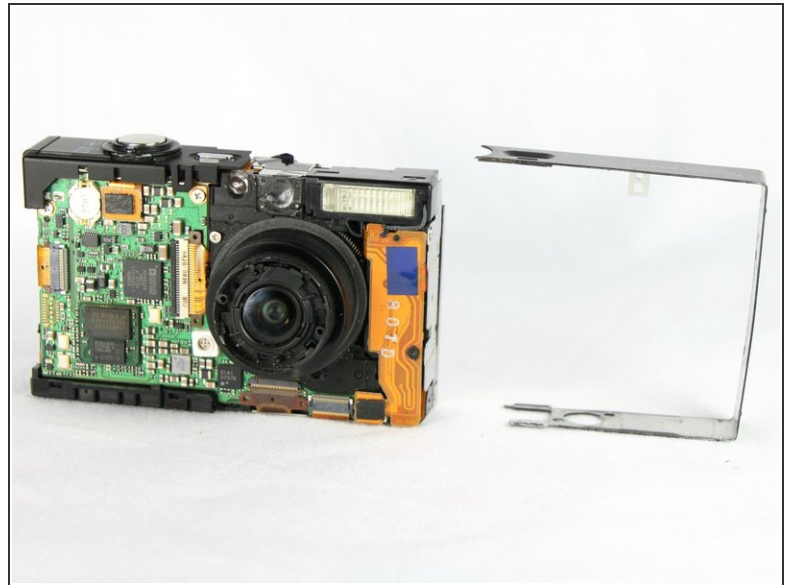
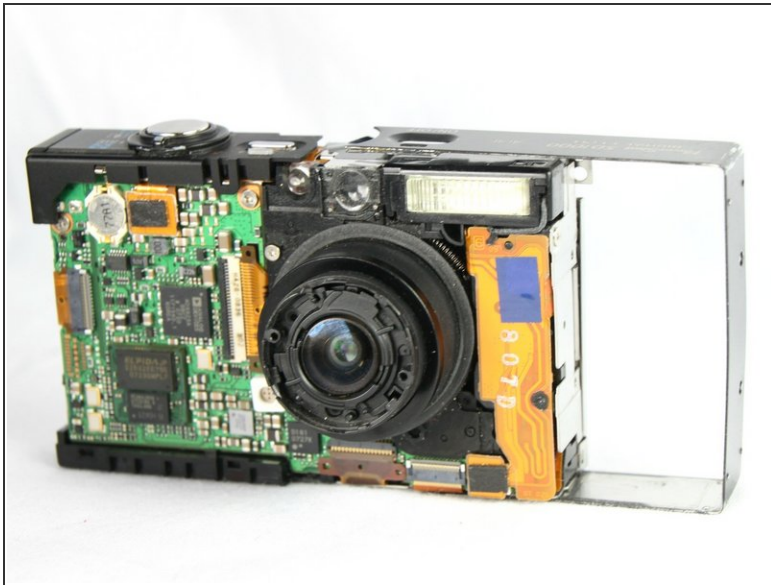
Step 12



- Carefully pull on the orange connector ribbon to disconnect the LCD screen.
- The LCD screen can be pulled out of the frame before disconnecting its connector ribbon.

 **Note:** Tweezers are helpful to disconnect the ribbon

Step 13 — Broken Flash Unit



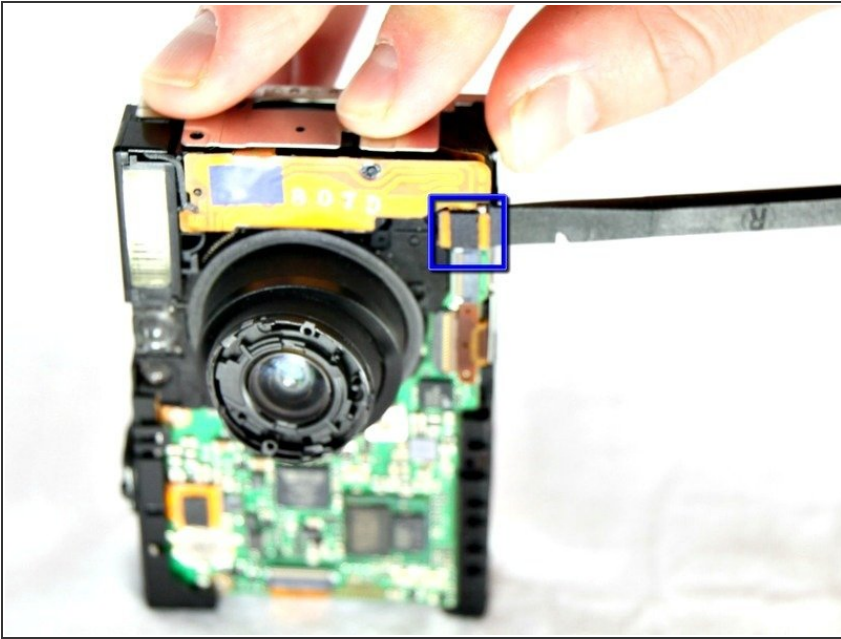
- Remove the metal frame on the side closest to the flash mechanism. This will expose the screw securing the flash assembly.

Step 14



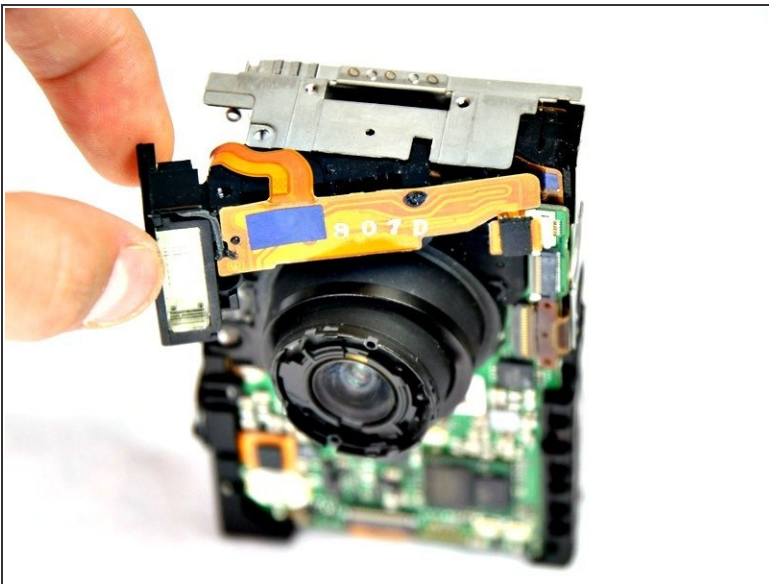
- Remove the screw securing the flash assembly.
- ⓘ Note: The screw is 2.4mm long.

Step 15



- Use the spudger to carefully disconnect the flash assembly ribbon from the black connector lock.

Step 16



- Remove the flash assembly.

⚠ **Note: BE CAREFUL**, when handling the flash assembly; touching the capacitor (the black cylinder) could shock you

To reassemble your device, follow these instructions in reverse order.