



# Canon PowerShot SD1000 Front Case of Camera Replacement

This is the removal of the front panel, in which this process will allow access the the circuits on both sides of the camera.

Written By: Phillip Phung





## TOOLS:

- [Phillips #00 Screwdriver](#) (1)
-

## Step 1 — Back Panel



- Remove the two screws from the side panel closest to the camera lens.

ⓘ Note: These screws are 2.9 mm long.

## Step 2




- Remove the two screws from the camera bottom panel.

ⓘ Note: These screws are 2.9 mm long.

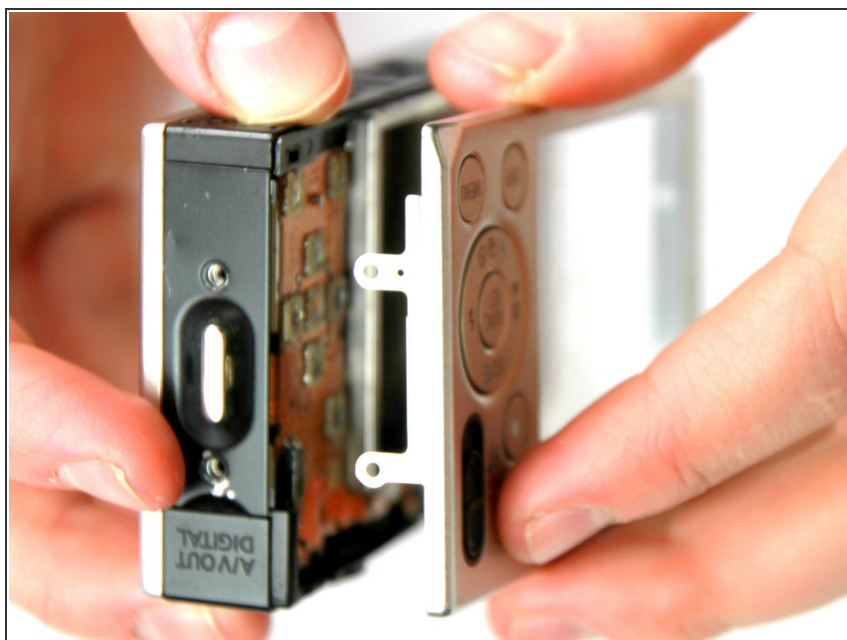
### Step 3



- Remove the 2 screws from the side panel farthest from the lens.

 Note: These screws are 2.9 mm long.

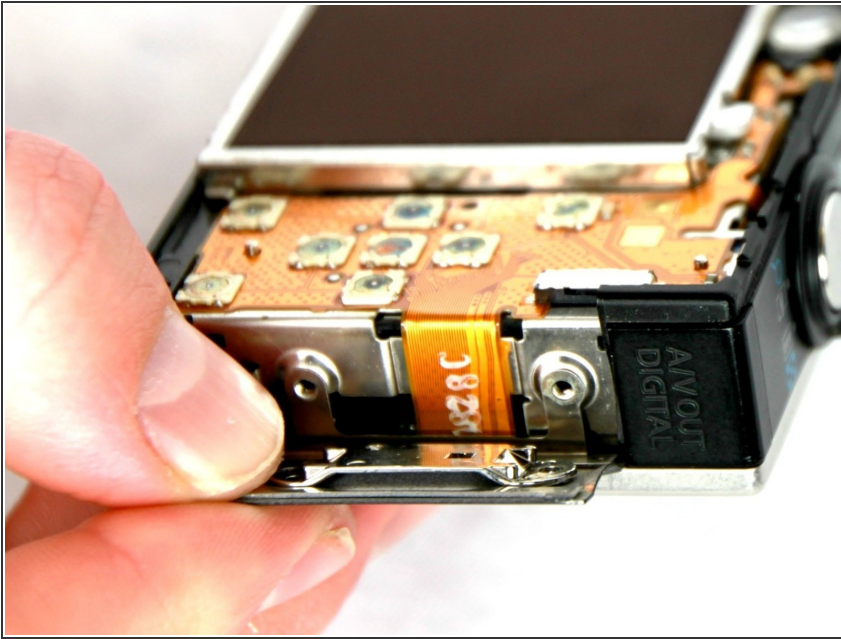
### Step 4



- Pull the back panel away from the camera body, starting at the end with the function buttons.

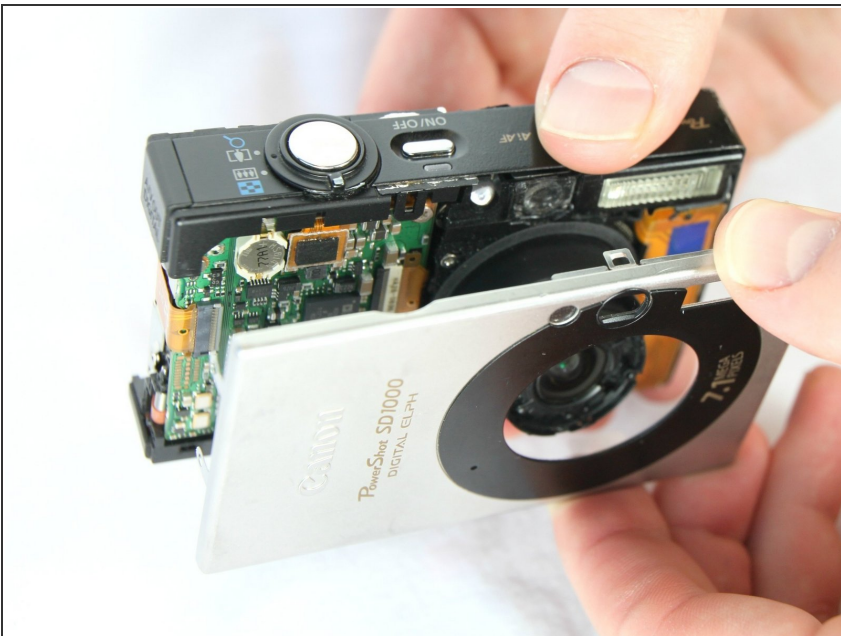


## Step 5



- Remove the small cover panel and attached wrist strap mount.

## Step 6 — Front Case of Camera



- Remove the front cover by gently pulling it away from the camera body.

## Step 7



- Place the front cover, back cover, and wrist strap mount in a safe place until you are ready for reassembly.

To reassemble your device, follow these instructions in reverse order.