



Canon PowerShot SD1000 Motherboard Replacement

If the circuits or datapaths are dead, take our the motherboard ahead.

Written By: Phillip Phung

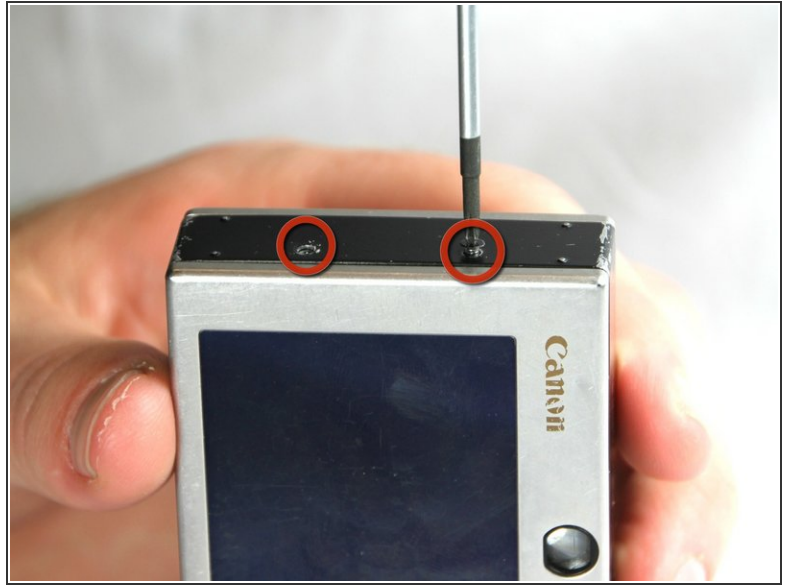




TOOLS:

- [Phillips #00 Screwdriver](#) (1)
 - [Spudger](#) (1)
-

Step 1 — Back Panel



- Remove the two screws from the side panel closest to the camera lens.

ⓘ Note: These screws are 2.9 mm long.

Step 2



- Remove the two screws from the camera bottom panel.

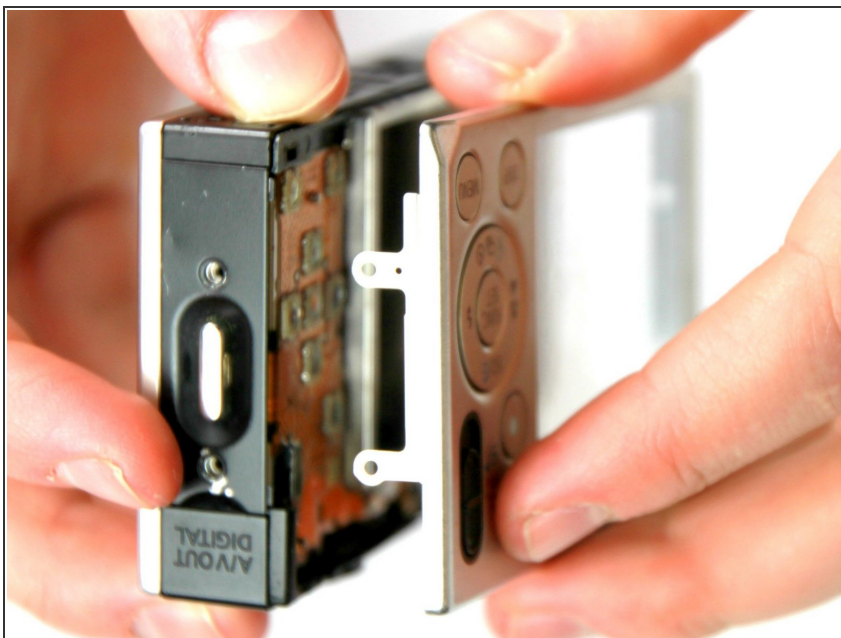
ⓘ Note: These screws are 2.9 mm long.

Step 3



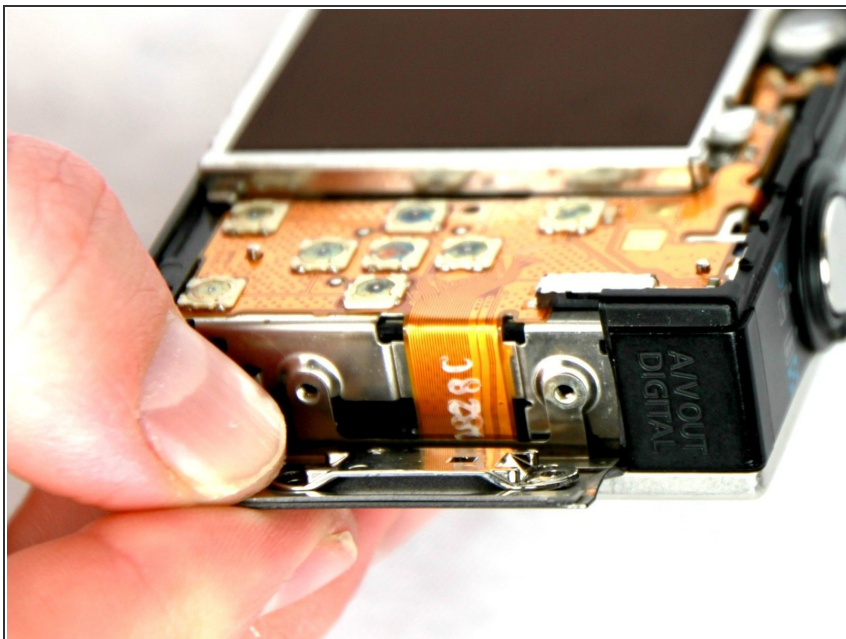
- Remove the 2 screws from the side panel farthest from the lens.
- ⓘ Note: These screws are 2.9 mm long.

Step 4



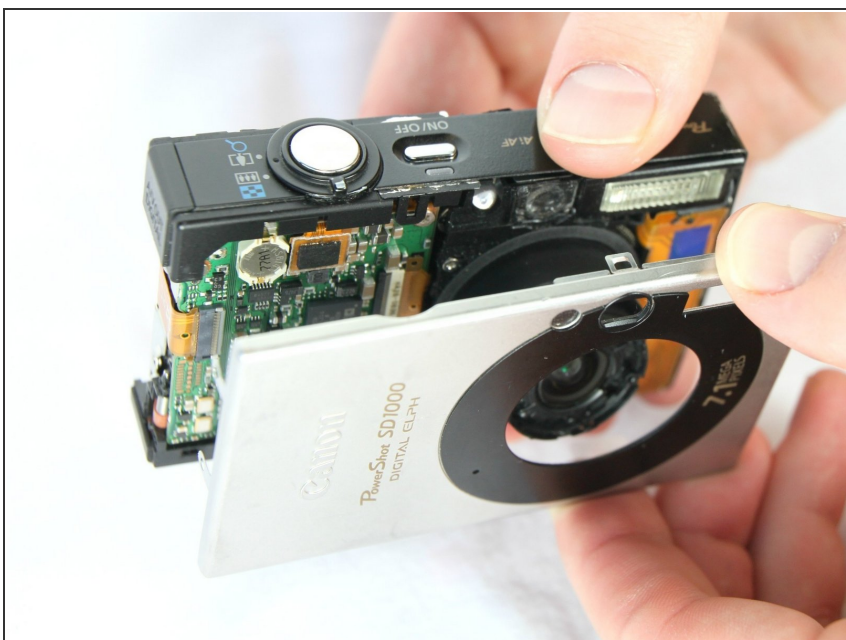
- Pull the back panel away from the camera body, starting at the end with the function buttons.

Step 5



- Remove the small cover panel and attached wrist strap mount.

Step 6 — Front Case of Camera



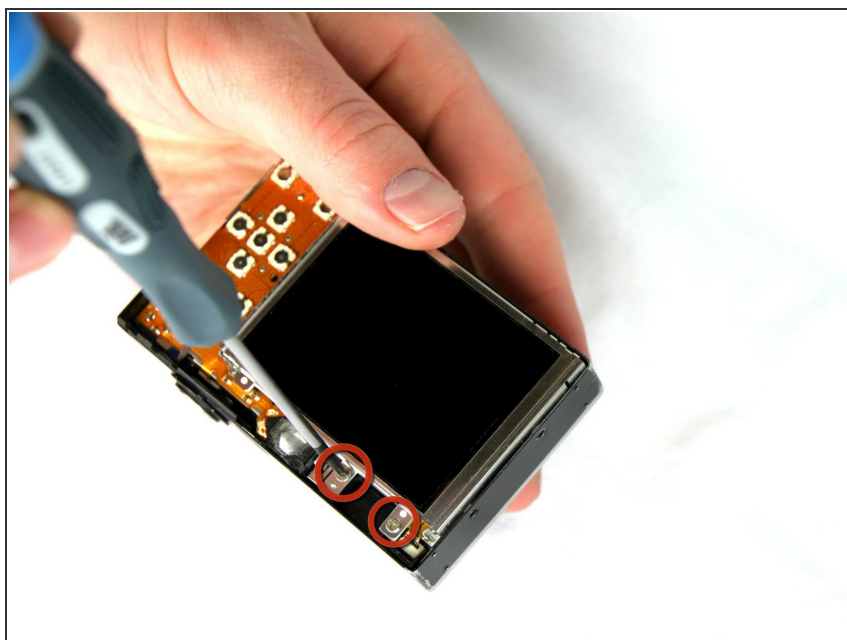
- Remove the front cover by gently pulling it away from the camera body.

Step 7



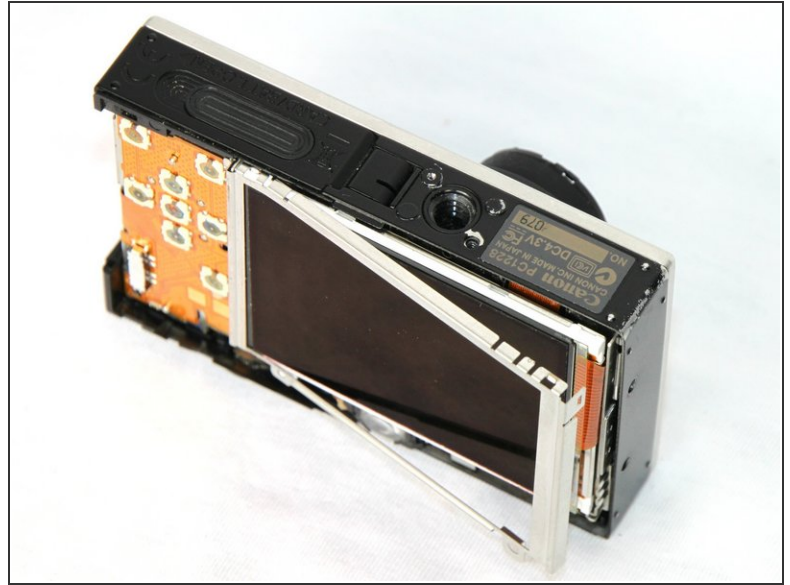
- Place the front cover, back cover, and wrist strap mount in a safe place until you are ready for reassembly.

Step 8 — LCD Screen



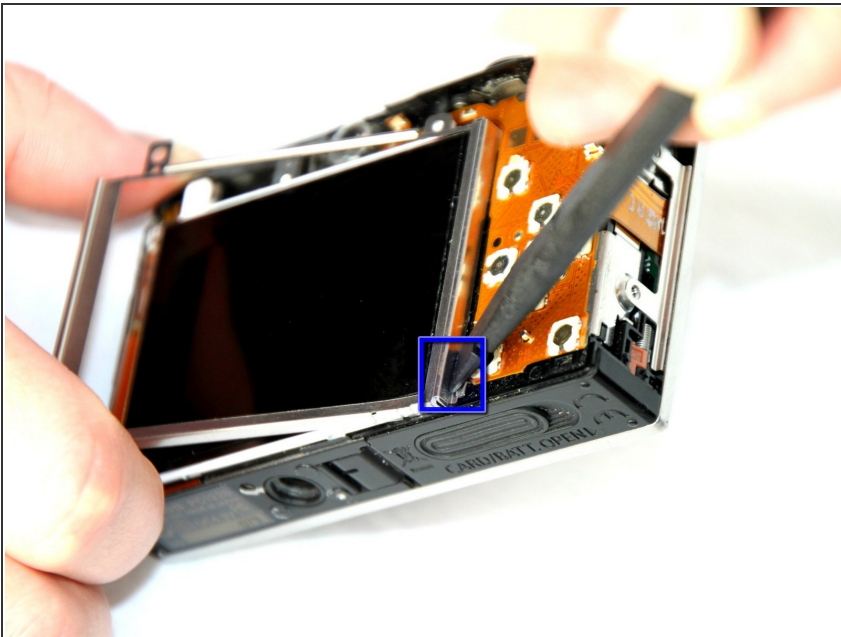
- Remove the 2 screws located at the top of the LCD panel.
- ⓘ Note: These screws are 2.4 mm long.

Step 9



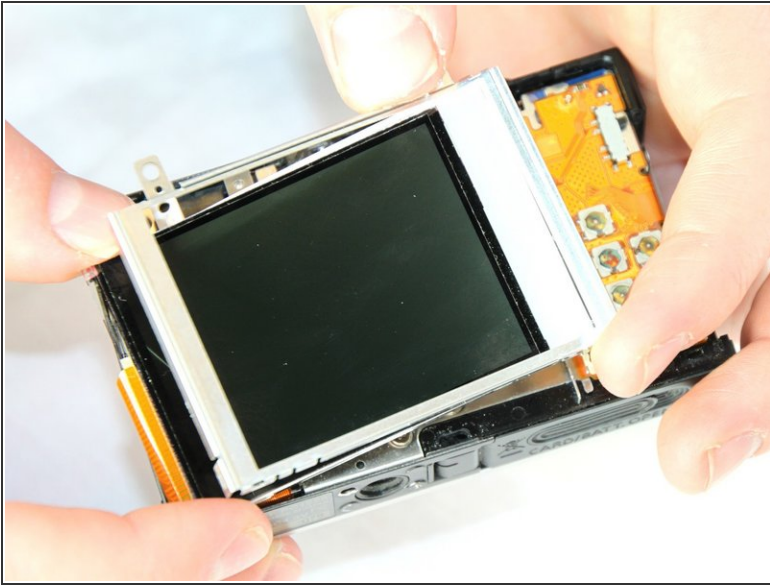
- Pull up the metal frame surrounding LCD screen starting at the side of the camera.

Step 10




- Push the metal frame away from the metal tab using the spudger, to detach the frame.
- Rotate the metal frame upwards.
- ⓘ Note: The metal framing should be attached by a metal tab towards the bottom of the camera, near the function buttons.

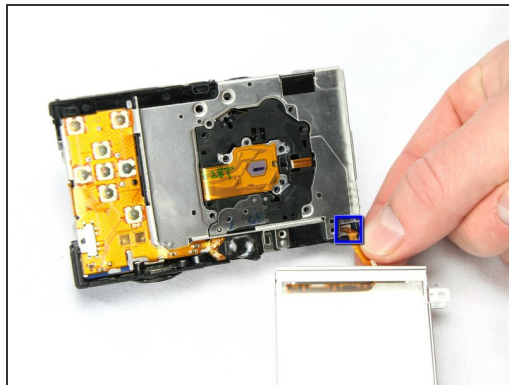
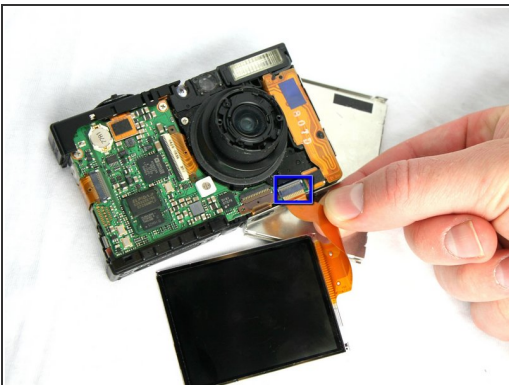
Step 11



- Carefully lift the metal frame from the camera.
- Remove the black LCD screen, leaving the thin lens pieces in place.

 **Note:** BE CAREFUL, both components are attached by an orange connector ribbon and cannot be removed yet!

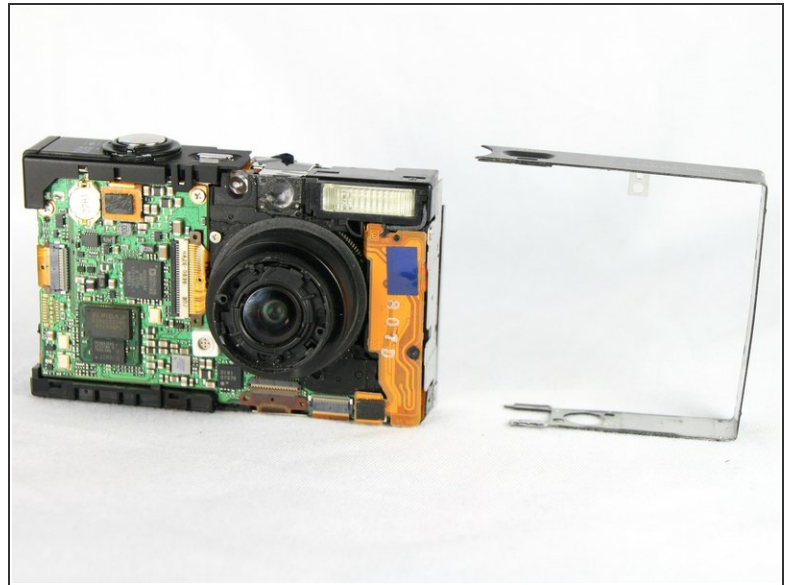
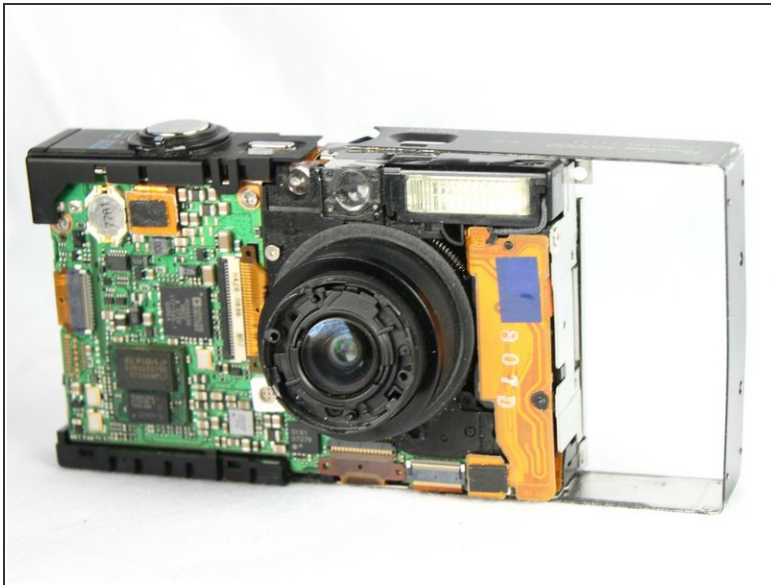
Step 12



- Carefully pull on the orange connector ribbon to disconnect the LCD screen.
- The LCD screen can be pulled out of the frame before disconnecting its connector ribbon.

 **Note:** Tweezers are helpful to disconnect the ribbon

Step 13 — Broken Flash Unit



- Remove the metal frame on the side closest to the flash mechanism. This will expose the screw securing the flash assembly.

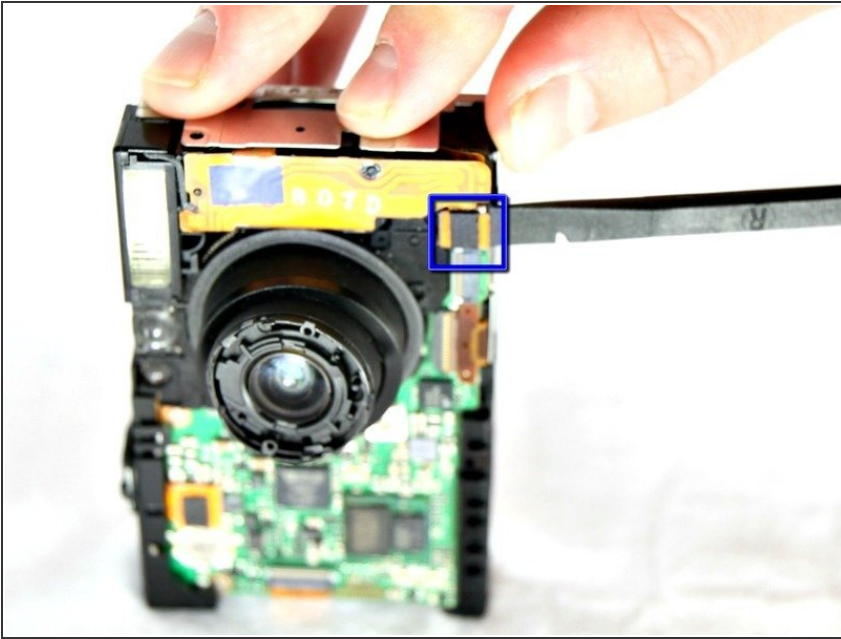
Step 14



- Remove the screw securing the flash assembly.

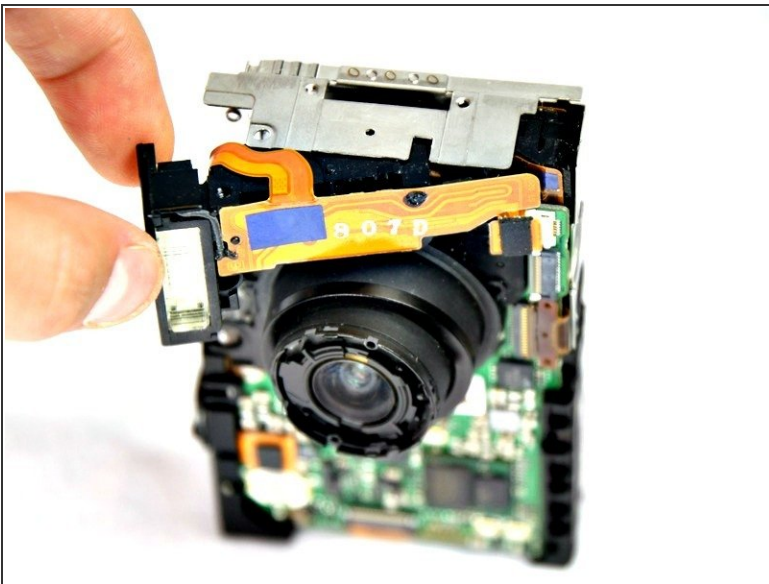
ⓘ Note: The screw is 2.4mm long.

Step 15




- Use the spudger to carefully disconnect the flash assembly ribbon from the black connector lock.

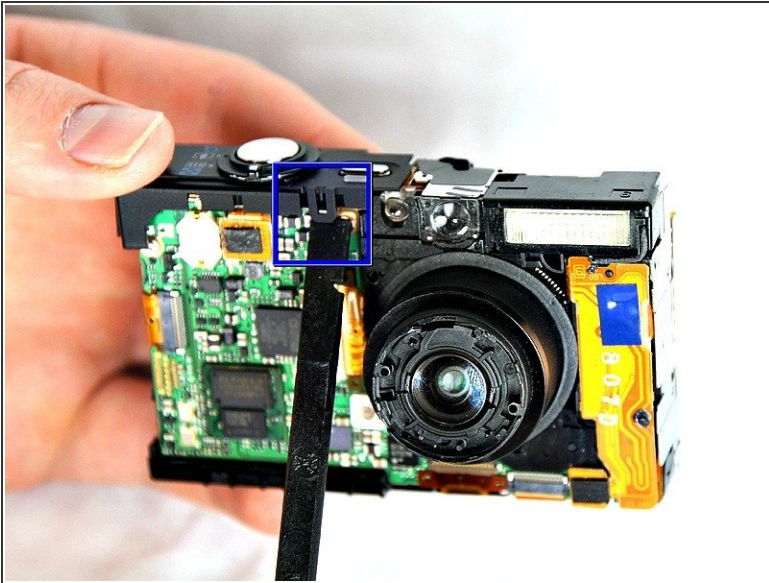
Step 16



- Remove the flash assembly.

 **Note:** BE CAREFUL, when handling the flash assembly; touching the capacitor (the black cylinder) could shock you

Step 17 — Shutter Button



- Using the spudger, take off the shutter button by prying the small tab on the front side of the camera.

Step 18 — Lens



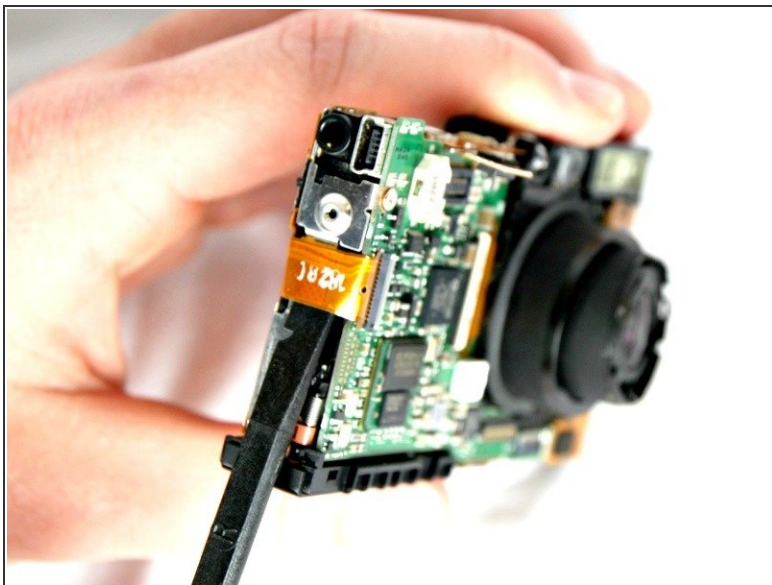
- Remove the 2.90mm screw from the lens, near the motherboard.

Step 19



- Using the spudger remove the shutter button by prying the small tab on the front side of the camera.

Step 20



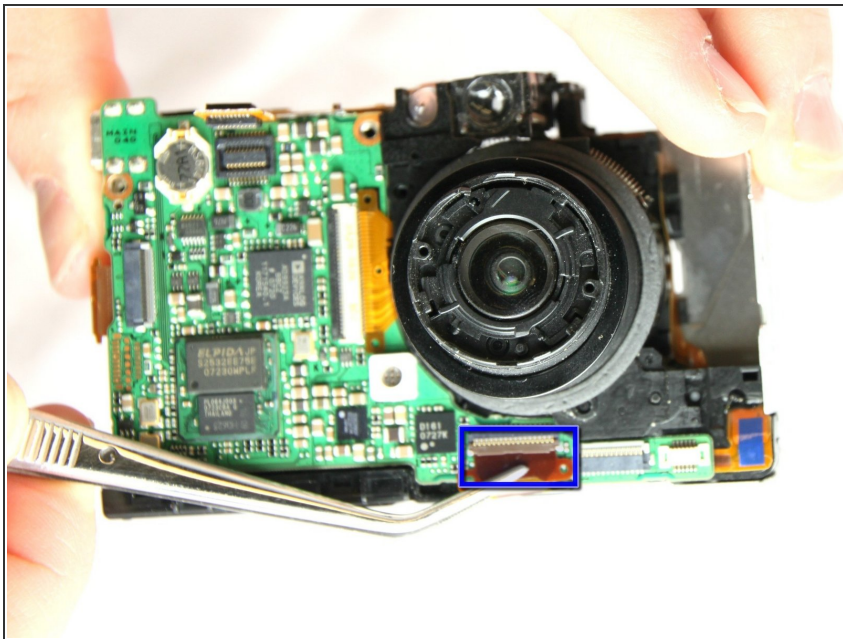
- With a spudger disconnect the orange connector ribbon as shown.
- Disconnect the orange connector ribbon that is located under the now removed shutter button.

Step 21



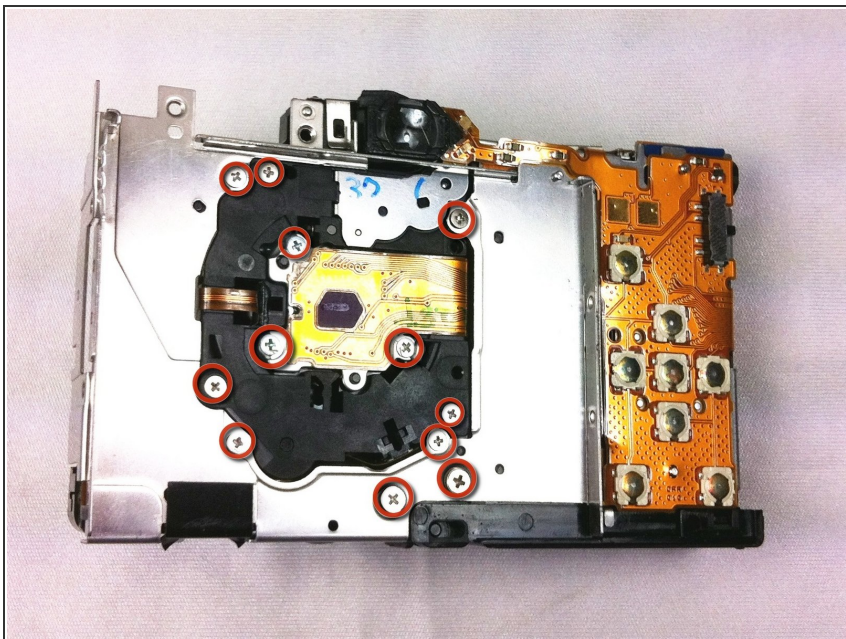
- Remove the two 2.90 mm screws from the motherboard.

Step 22



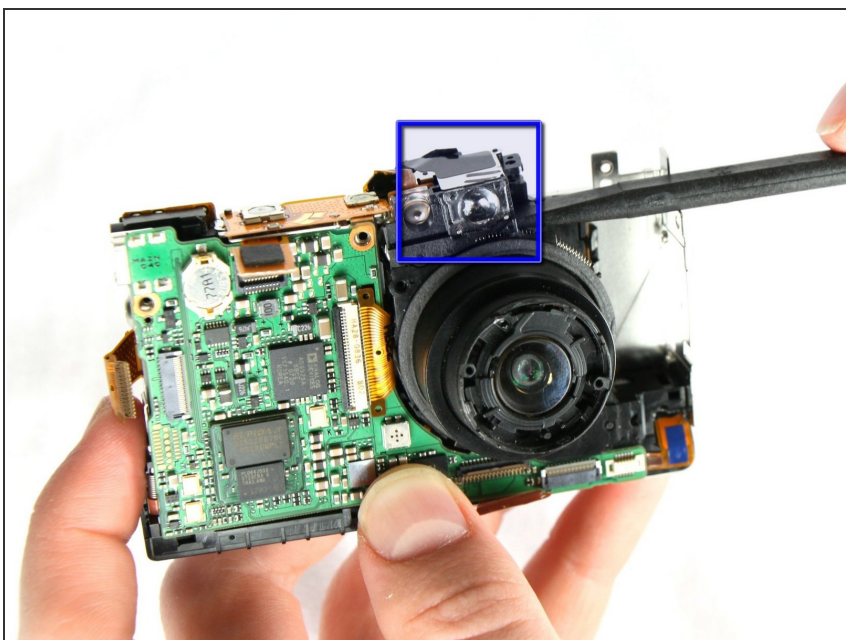
- With Tweezers detach the bottom orange ribbon.

Step 23



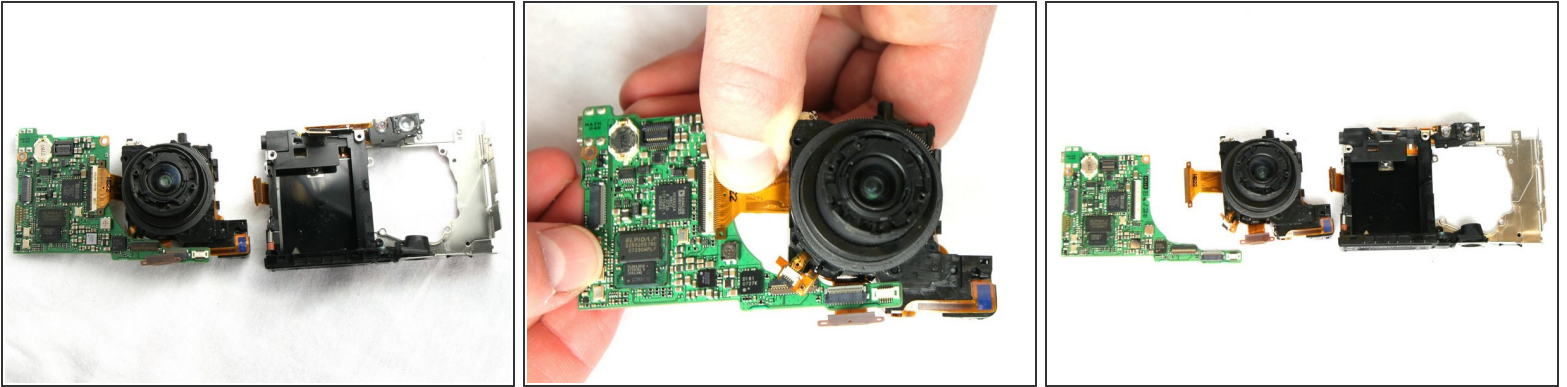
- Remove the screws shown. Start with the outside 6 (3-2.90mm & 3-2.40mm) screws on the metal frame. Then remove the 6 (2.40mm) screws on the back of the lens piece

Step 24



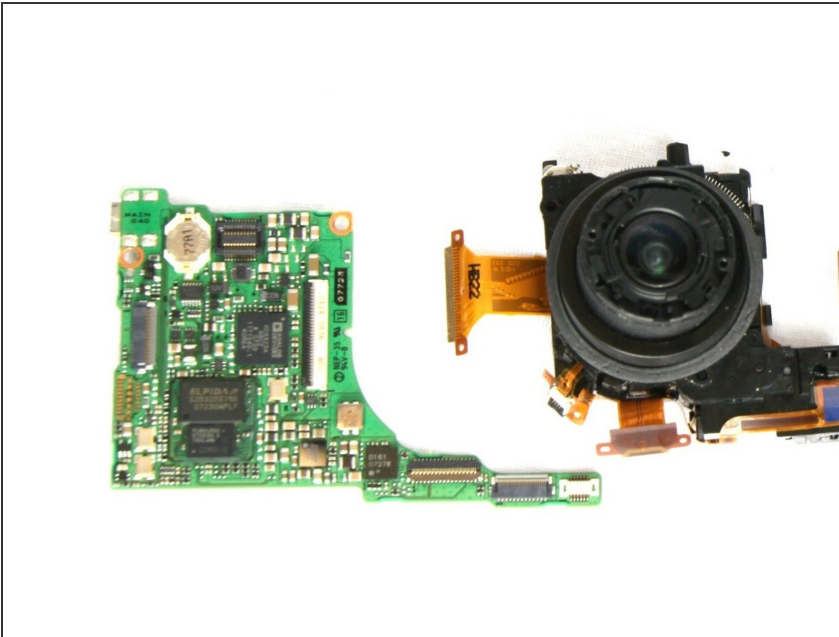
- With spudger gently remove the Viewfinder Window that is directly above the lens.

Step 25



- Detach the mother board with lens from body of camera.
- Carefully remove the lens from the motherboard. Use tweezers to remove any of the 4 connecting ribbons from the lens.
- Your lens has been removed from the motherboard and bottom framing.

Step 26 — Motherboard



- The motherboard (left) is now separated from the lens.

To reassemble your device, follow these instructions in reverse order.