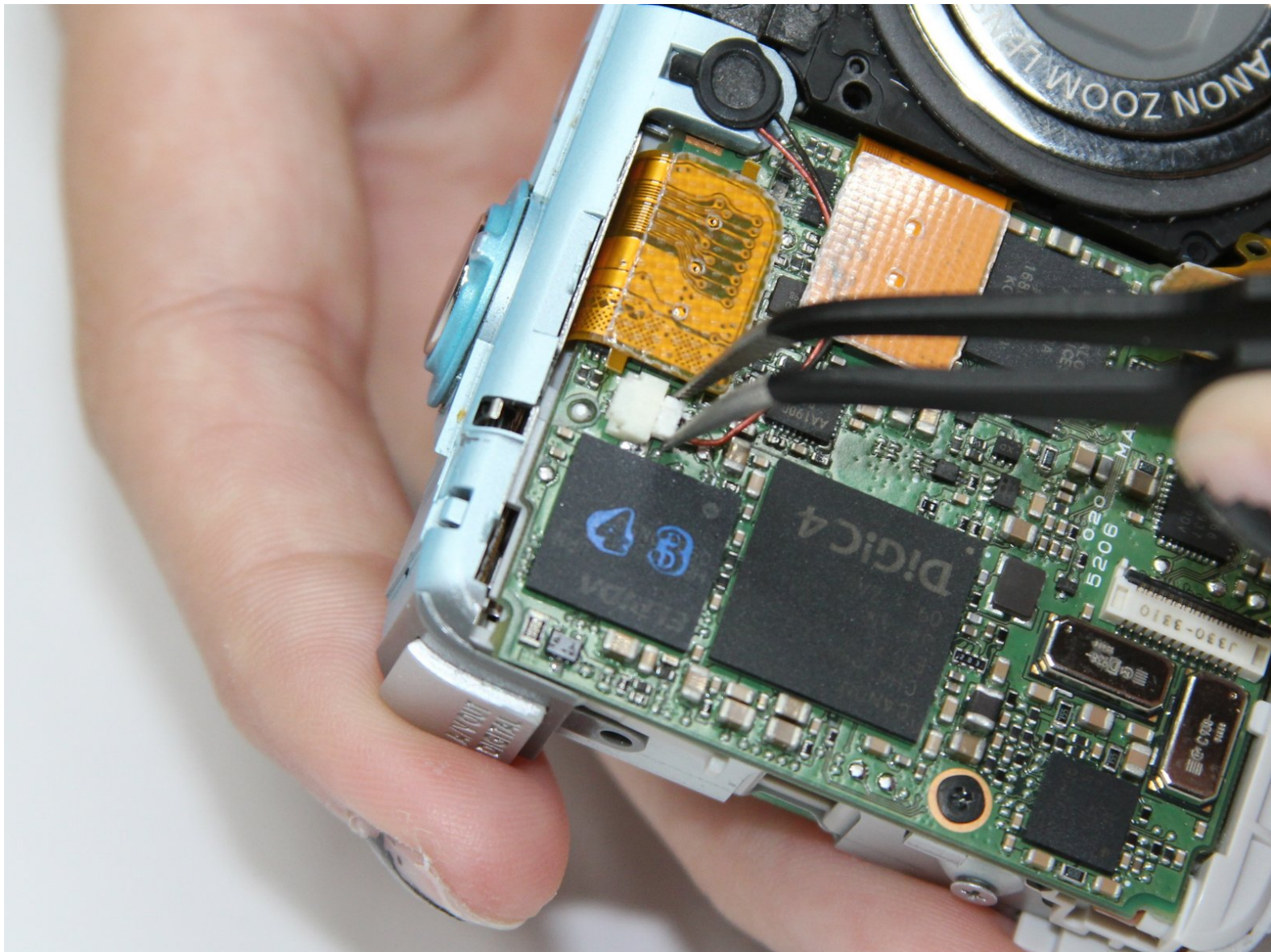




# Canon PowerShot SD1200 IS Shutter Button Replacement

This guide shows how to remove the shutter button for cleaning or replacement.

Written By: Jeff Casper



## INTRODUCTION

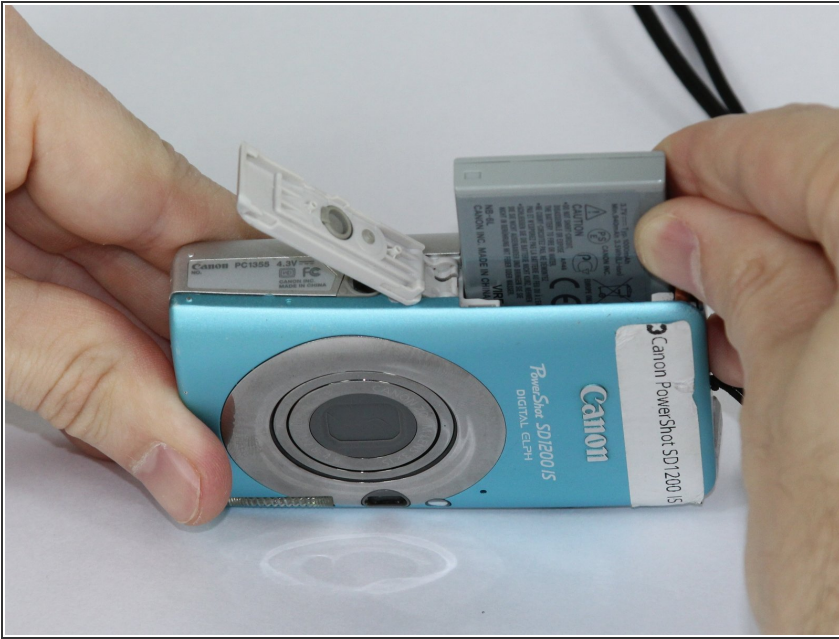
If the shutter button does not work, replacing it can fix the problem. Use this guide to access the shutter button for cleaning or replacement.

---

### TOOLS:

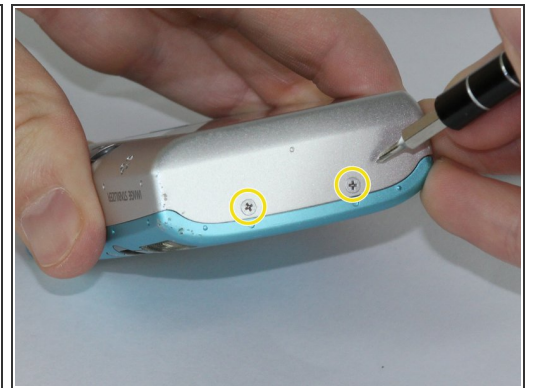
- [Spudger](#) (1)
  - [Phillips #00 Screwdriver](#) (1)
  - [Tweezers](#) (1)
-

## Step 1 — Front and Rear Covers



- Remove the battery.

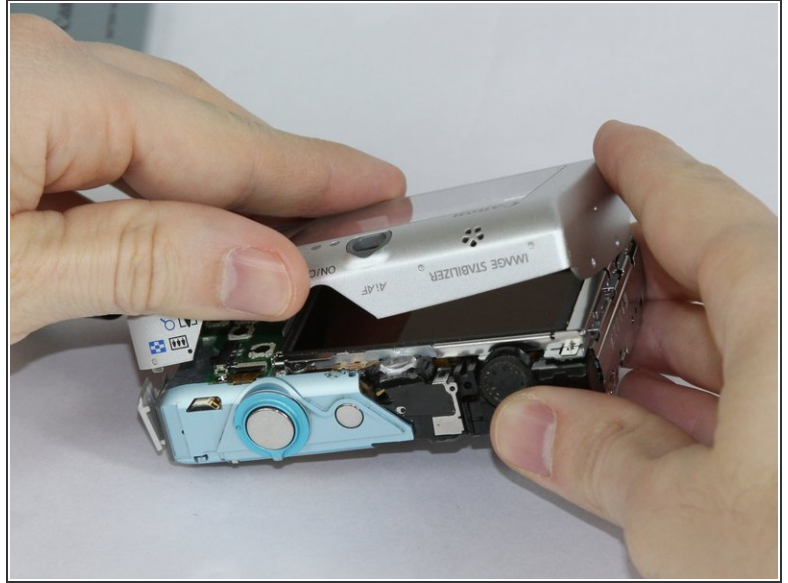
## Step 2



- Remove the two screws from the side of the camera casing with the strap. (4mm Phillips 00)
- Remove the two screws from the bottom of the camera. (4mm Phillips 00)
- Remove the two screws from the right side of the camera opposite the strap. (2mm Phillips 00)

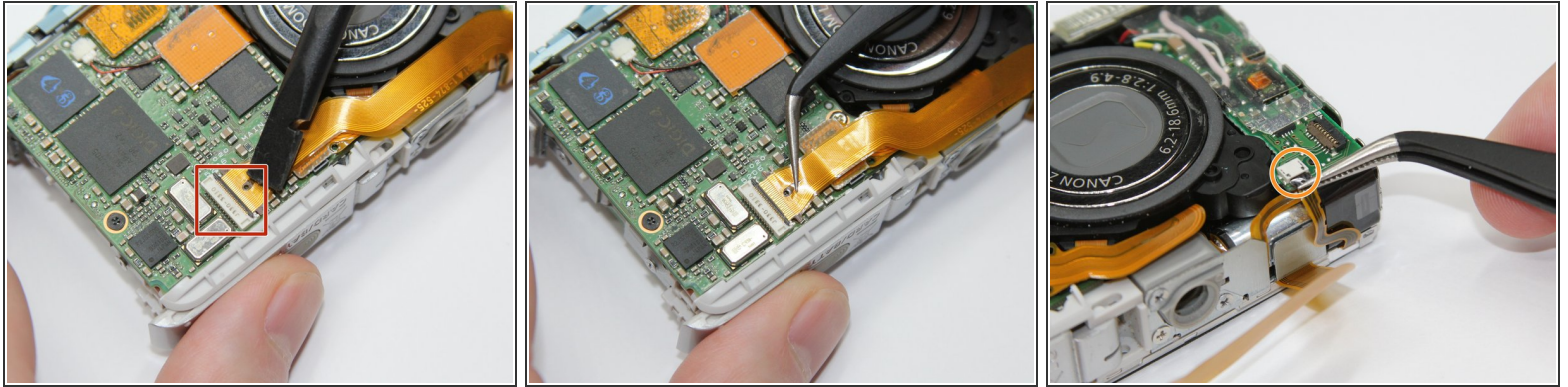


## Step 3



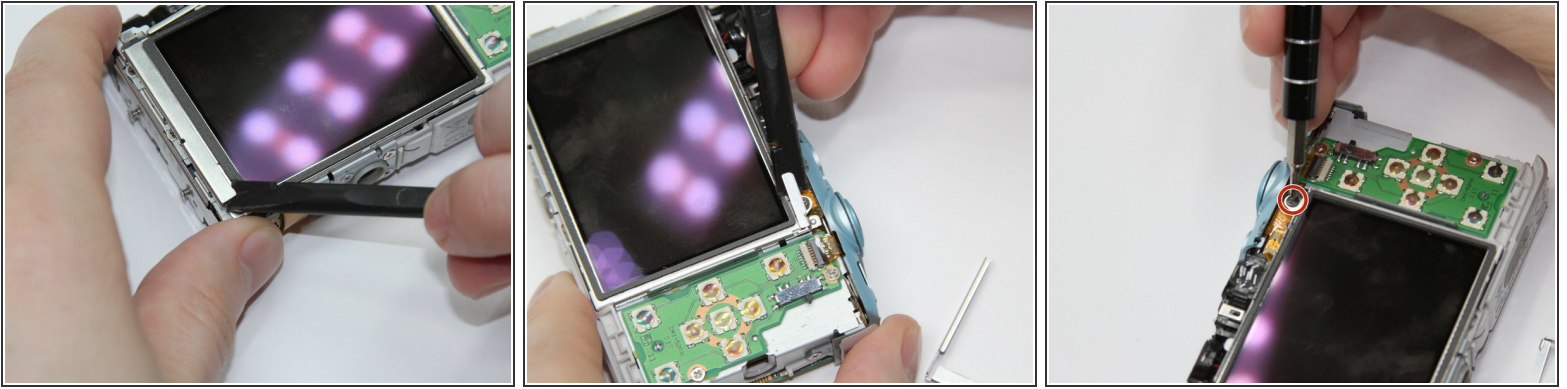
- Pull off the front cover.
- ⓘ If the top of the cover sticks, use gentle downward pressure on the retention clips above the lens to release.
- Remove the back cover.

## Step 4 — LCD



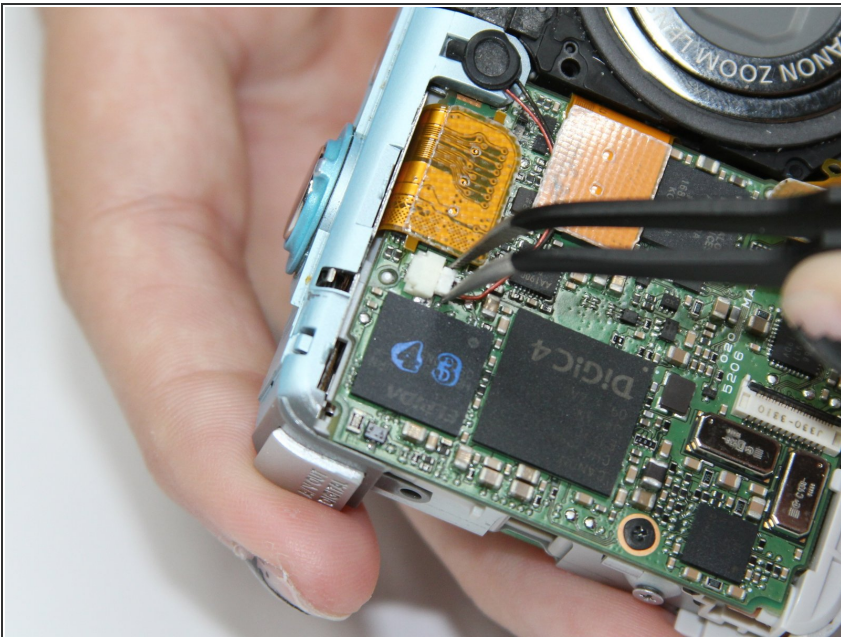
- Use the spudger to lift the retaining flap on the **Zero Insertion Force (ZIF)** tab securing the thick ribbon cable.
  - Slide out the ribbon cable using fingers or tweezers.
- ⚠ Be sure you are prying up on the hinged retaining flap, not the connector.
- Using tweezers, disconnect the small ribbon cable below the flash assembly from the **No Fuss Connector** by simply pulling the ribbon cable straight out.

## Step 5



- Remove the L shaped brackets from the left and right side of the LCD screen with the spudger tool.
- ⓘ The Brackets have tabs that need to be pried up.
- Remove the screw below the shutter button. (2.5mm Phillips 00)
- Holding the sides of the LCD screen, lift the screen up and away to remove.

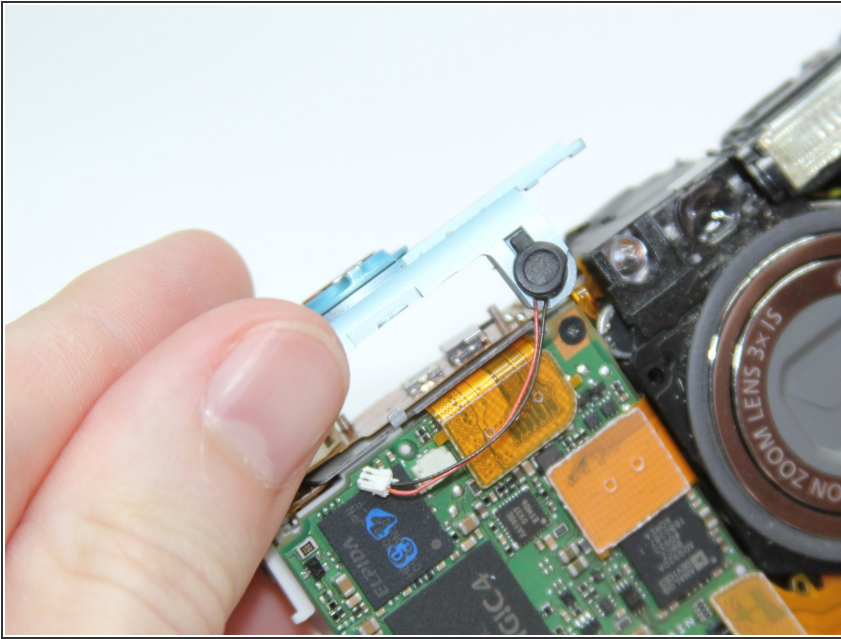
## Step 6 — Shutter Button



- Remove the speaker connector by gripping it with the tool and gently, with a wiggling motion, pull it out.
- ⚠ Pull the connector straight out by the white connector. Pulling on the wires will damage them.

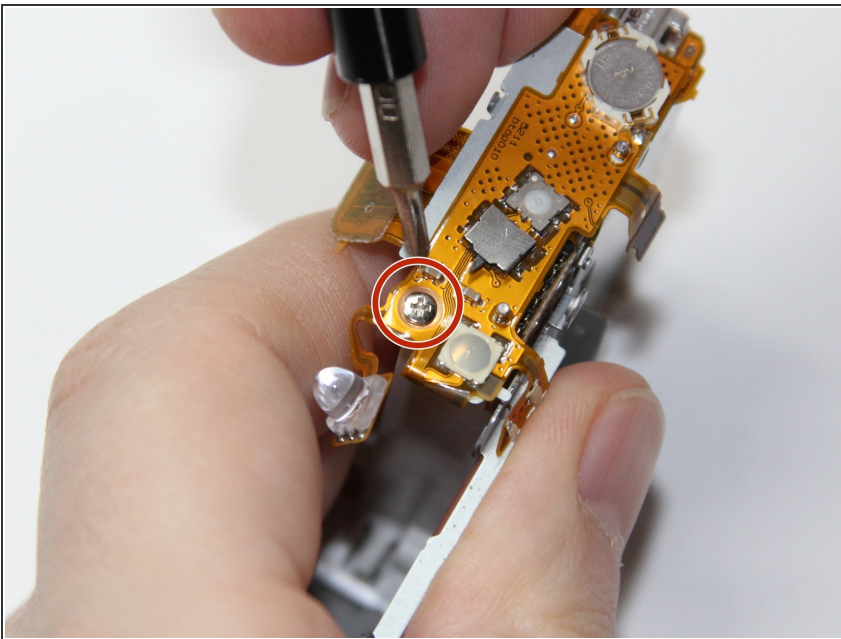


## Step 7



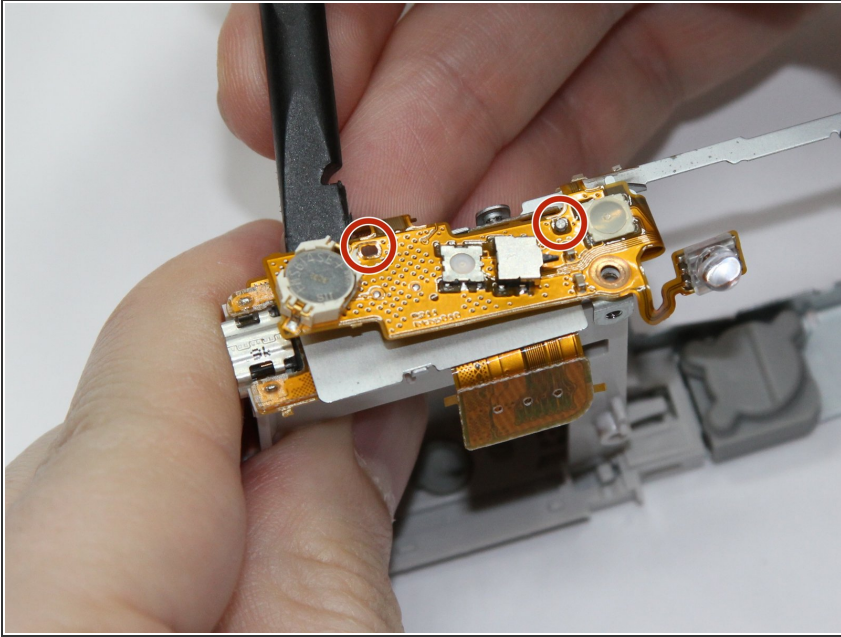
- Lift off the mechanical shutter button assembly.

## Step 8



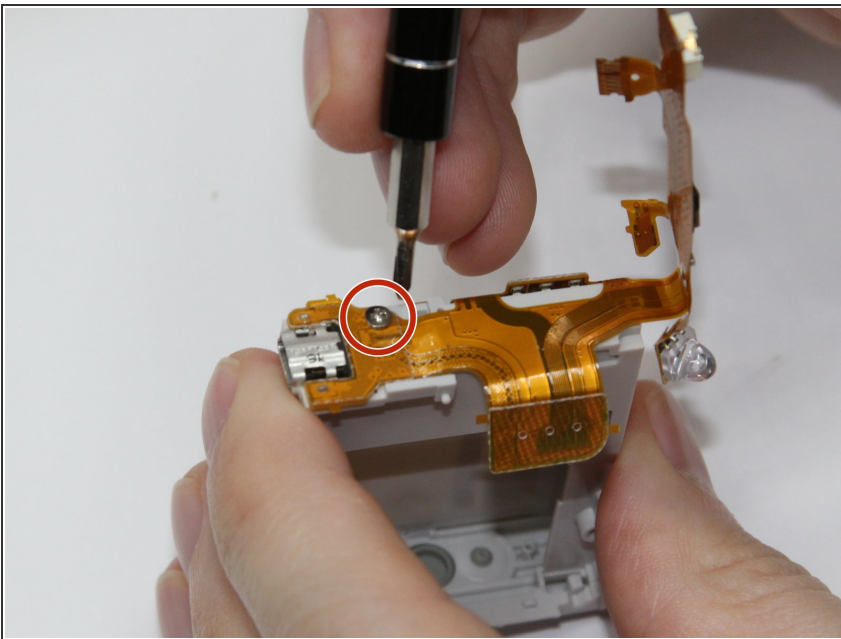
- Remove the screw (3.5mm Phillips 00) from the top of camera. It is located under the shutter button mechanical assembly.
- ⓘ The motherboard, Lens, and Flash assemblies do not need to be removed to access and remove the shutter button.

## Step 9



- Use the spudger to lift the shutter button ribbon up out of the alignment tabs.

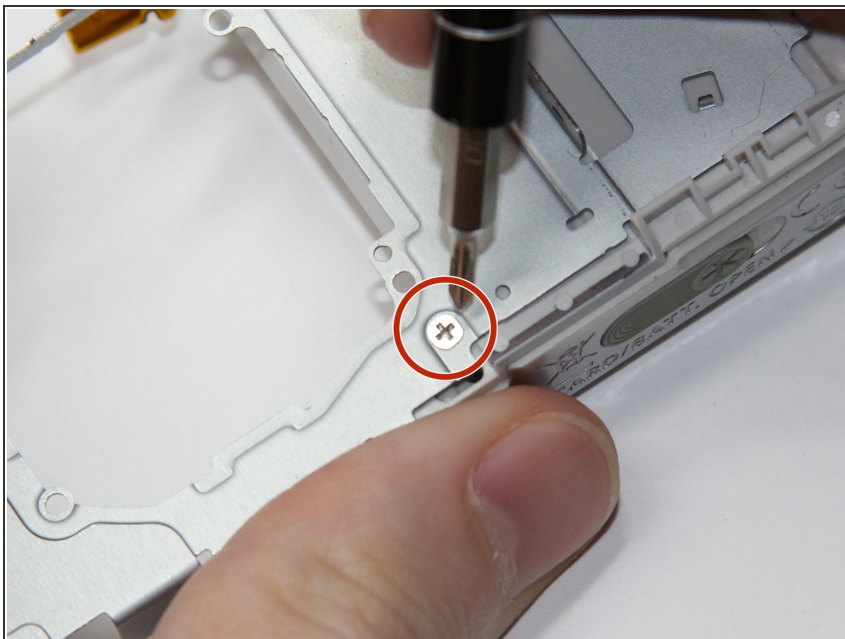
## Step 10



- Hinging the top of the shutter button ribbon up out of the way, remove the screw found underneath. (3.5mm Phillips 00)
- ⚠ Ribbon cables are delicate - avoid using excessive force or bending.

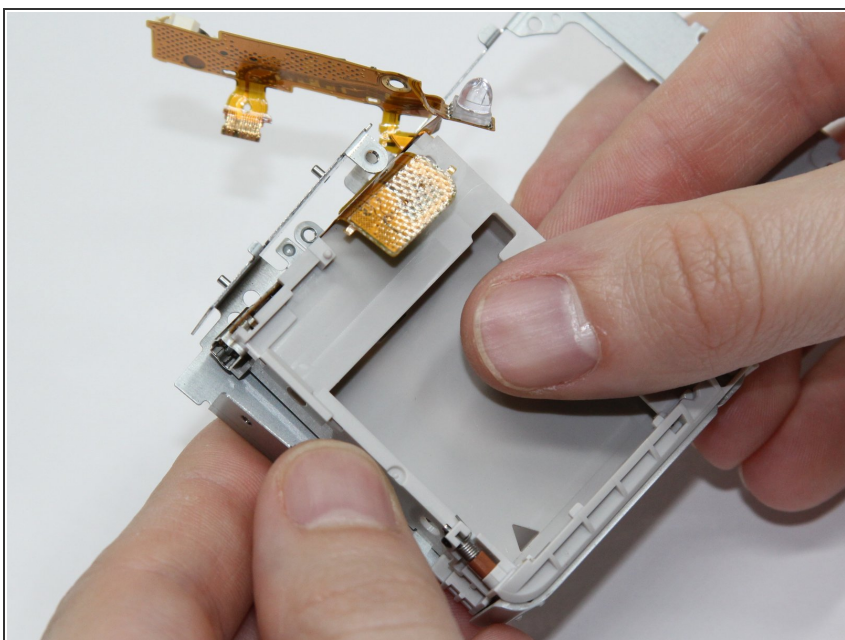


## Step 11



- On the backside of the camera, remove the screw located at the bottom center of the metal frame beneath the lens assembly. (2.5mm Phillips 00)

## Step 12



- Lift out the battery tray. The button ribbon assembly will come with it.

To reassemble your device, follow these instructions in reverse order.