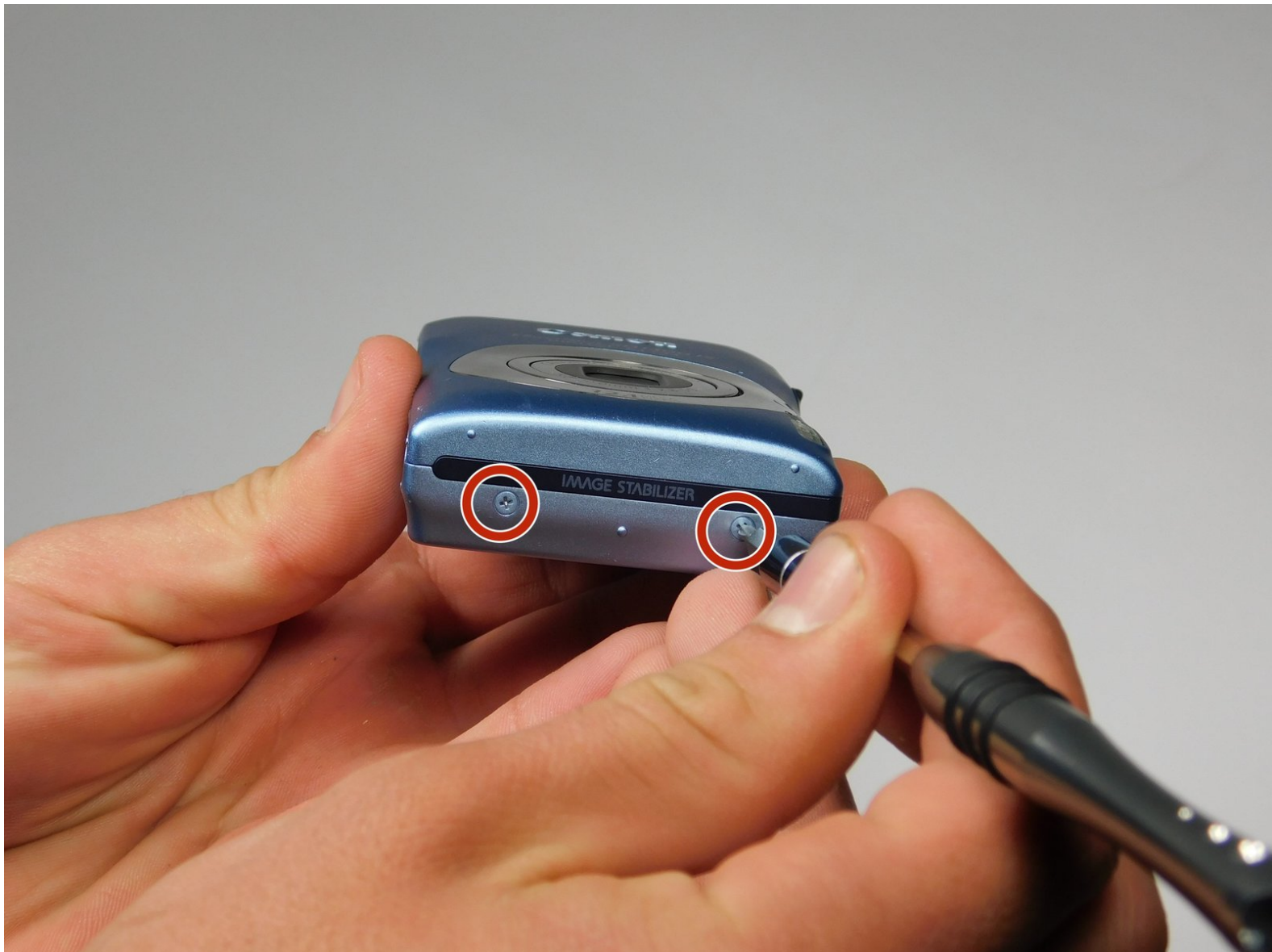




Canon PowerShot SD1300 IS Flash Assembly Replacement

This is a guide which will show detailed instruction on how to properly remove and replace the Canon PowerShot SD1300 IS Flash Assembly.

Written By: Clayton



This document was generated on 2019-09-30 10:34:23 AM (MST).

INTRODUCTION

This guide will show you how to properly replace your Flash Assembly on your Canon PowerShot SD1300 IS.



TOOLS:

- [JIS Driver Set](#) (1)

J00

- [iFixit Opening Tools](#) (1)
-

Step 1 — Flash Assembly



- Remove the two 2mm J00 screws on the right exterior.
- Remove a single 4 mm J00 on the bottom exterior.
- Remove a single 3mm J00 on the left exterior.

Step 2



- Once the front shell of the camera is removed the back shell should slide off just the same.

Step 3



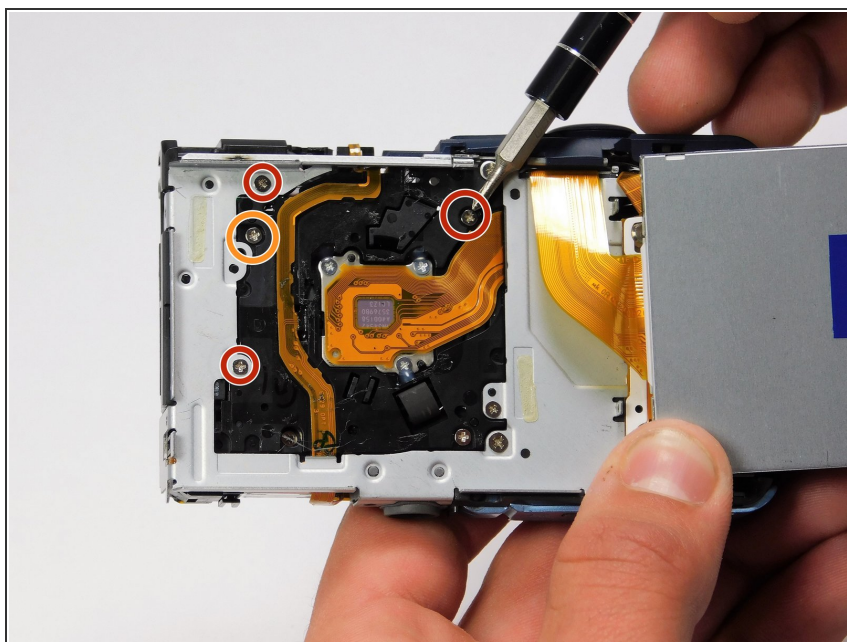
- Remove a 3mm J00 screw from behind wires under the flash.

Step 4



- Use plastic opening tool to remove the screen to gain access to the screws to remove the Flash Assembly.

Step 5



- Remove the two 3mm J00 screws under the screen.
- Remove the 4mm J00 screws under the screen.
- The flash assembly is now released and should be able to be removed from the front side of the camera.

To reassemble your device, follow these instructions in reverse order.