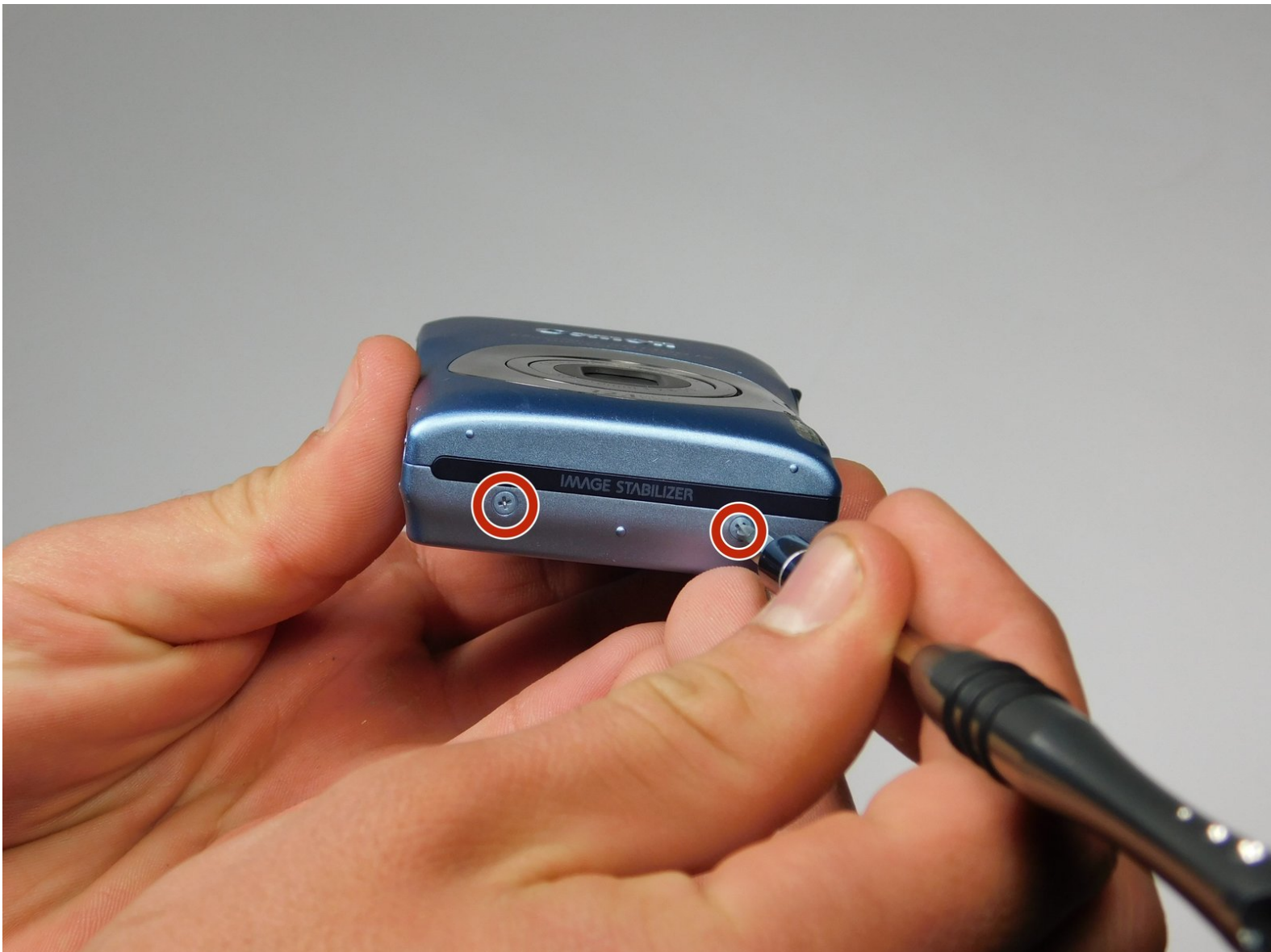




Canon PowerShot SD1300 IS Lens Replacement

In this guide you will take apart the Canon PowerShot SD1300 IS camera and replace the faulty lens.

Written By: Clayton



INTRODUCTION

This guide will show you how to properly replace a faulty lens on your Canon PowerShot SD1300 IS.



TOOLS:

- [JIS Driver Set](#) (1)

J00

- [iFixit Opening Tools](#) (1)
-

Step 1 — Lens



- Remove the two 2mm J00 screws on the right exterior.
- Remove a single 4 mm J00 on the bottom exterior.
- Remove a single 3mm J00 on the left exterior.

Step 2



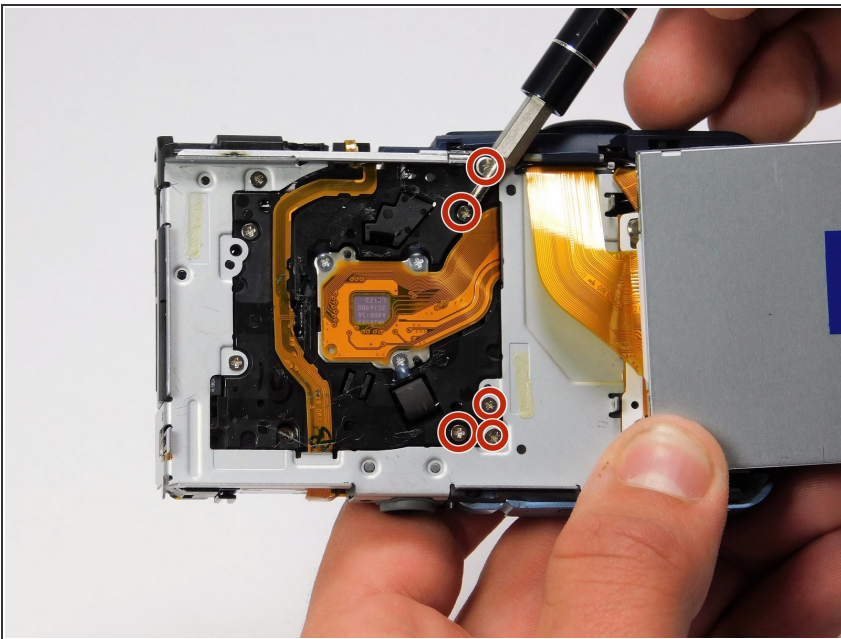
- Once the front shell of the camera is removed the back shell should slide off just the same.

Step 3



- Use one of your plastic opening tools to separate the screen from the main body of your PowerShot.

Step 4



- Remove five of the 3mm J00 screws under the screen to release the lens for replacement.
- Lens assembly should be removed through the front of the camera once screws are removed.

To reassemble your device, follow these instructions in reverse order.