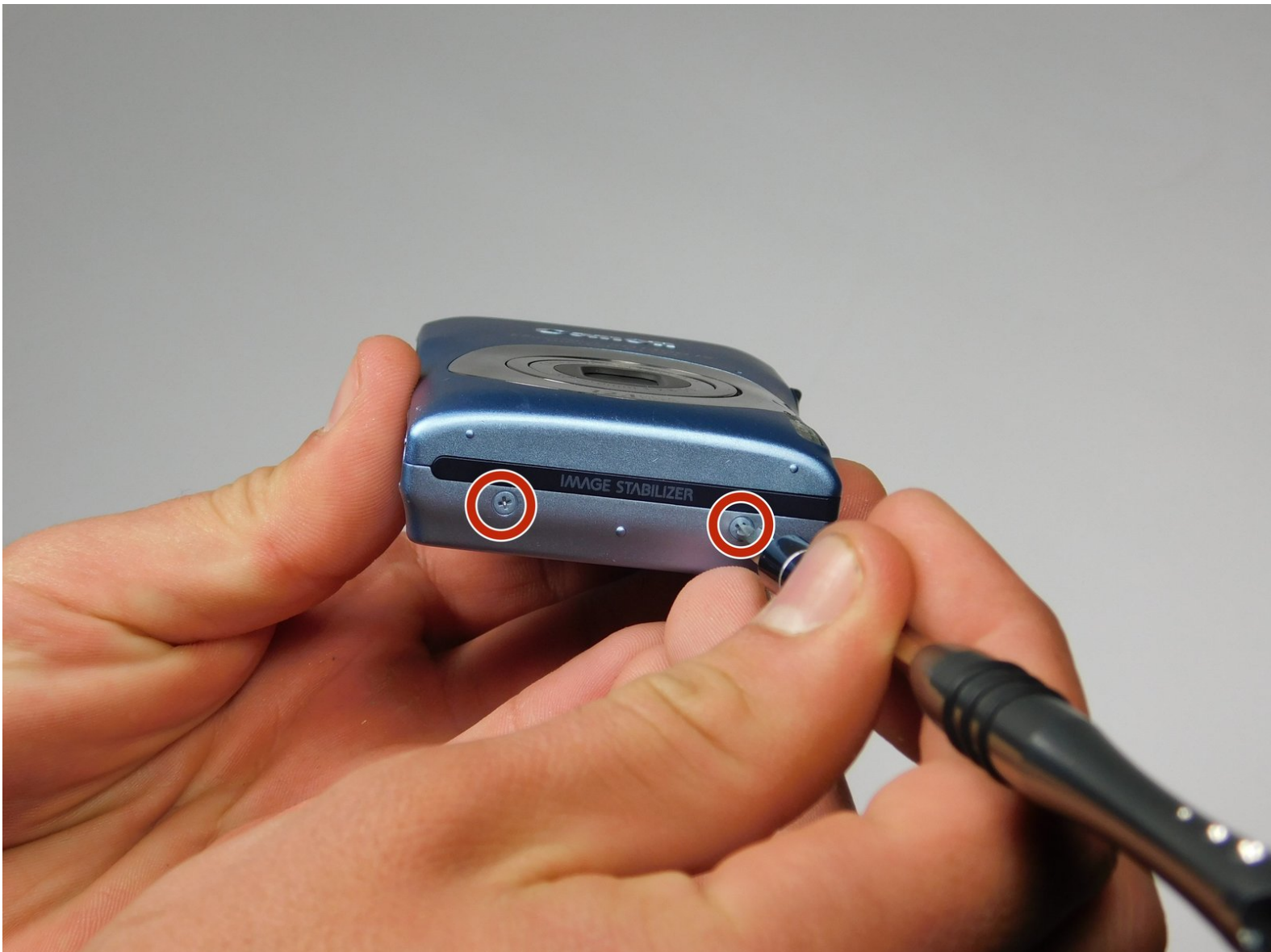




# Canon PowerShot SD1300 IS Shutter Button Replacement

This guide will accomplish a complete replacement for a faulty shutter button on the Canon PowerShot SD1300 IS.

Written By: Clayton



# INTRODUCTION

This guide will show you how to properly replace a faulty shutter button.



## TOOLS:

- [Heavy-Duty Spudger](#) (1)
- [JIS Driver Set](#) (1)

J00

---

## Step 1 — Shutter Button



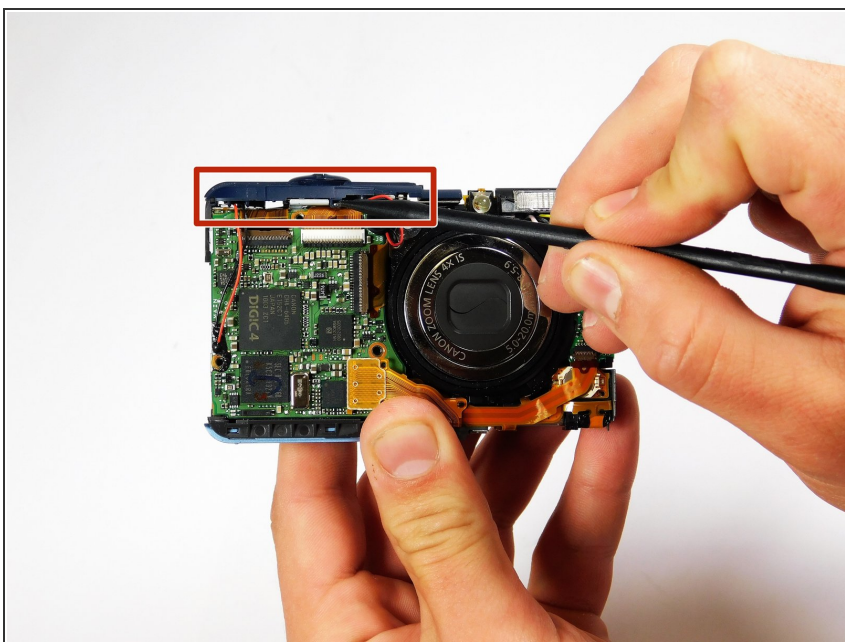
- Remove the two 2mm J00 screws on the right exterior.
- Remove a single 4 mm J00 on the bottom exterior.
- Remove a single 3mm J00 on the left exterior.

## Step 2



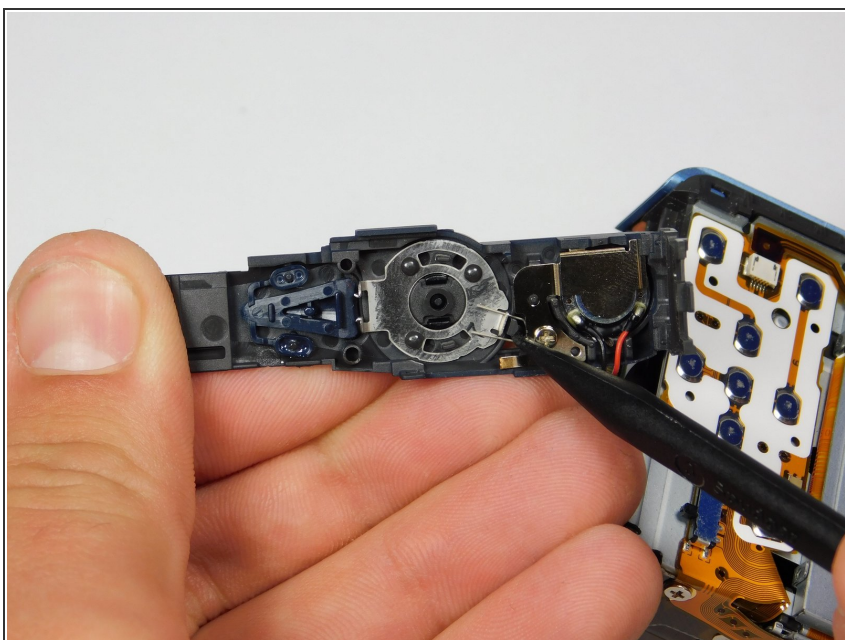
- Once the front shell of the camera is removed the back shell should slide off just the same.

### Step 3



- Use your Heavy-Duty Spudger to remove your faulty shutter piece.

### Step 4



- Insert Heavy-Duty Spudger under shutter button to release shutter button.

To reassemble your device, follow these instructions in reverse order.